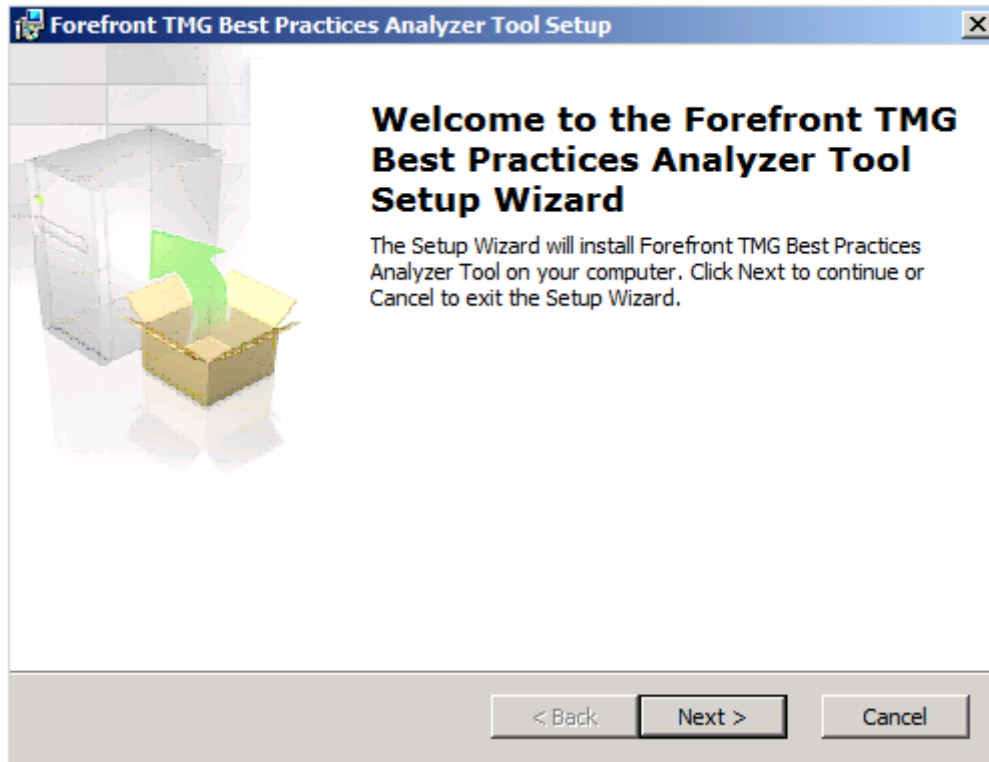


TMGBPA – Forefront TMG Best Practice Analyzer

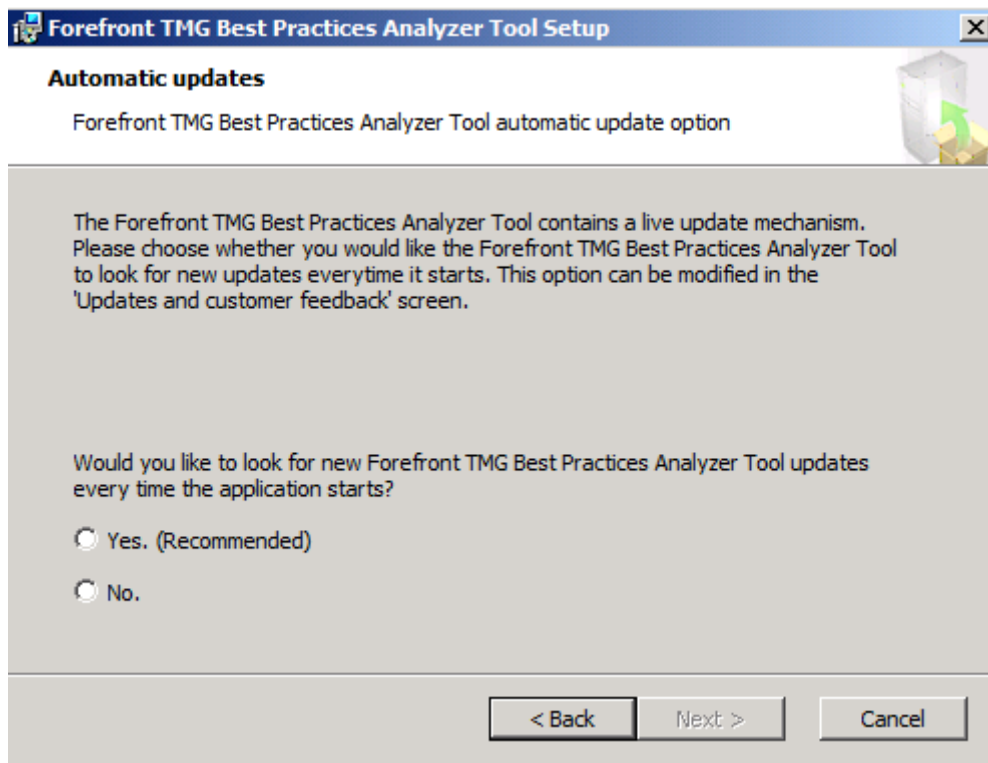
Download:

<http://www.microsoft.com/downloads/details.aspx?FamilyID=8aa01cb0-da96-46d9-a50a-b245e47e6b8b&displaylang=en>

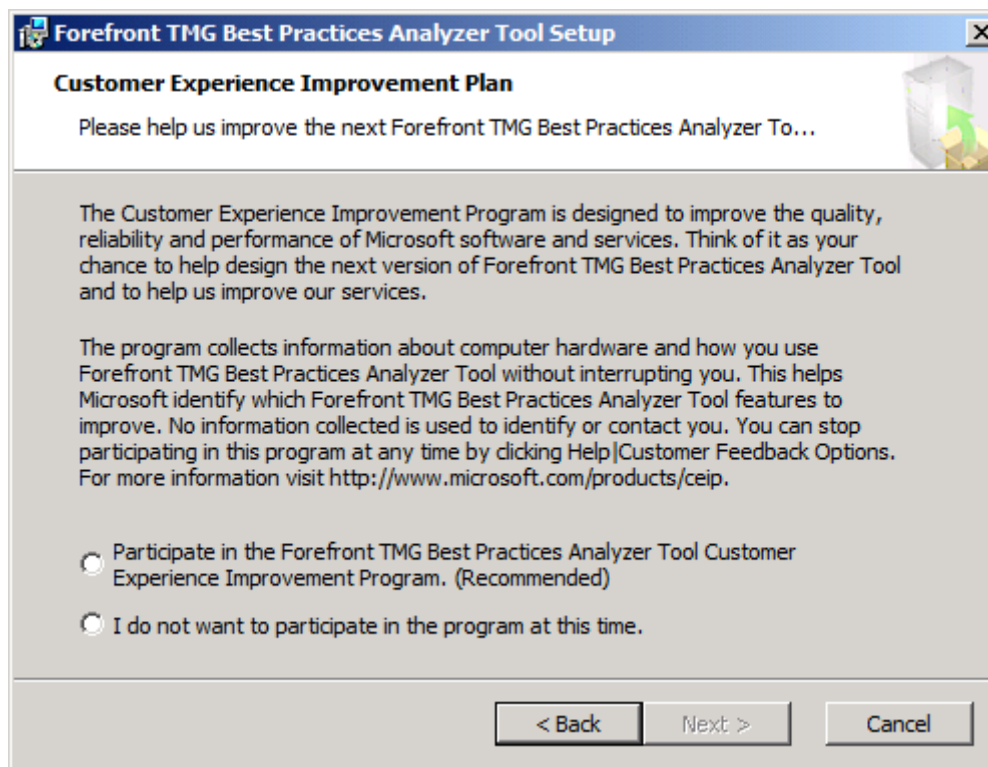


Lizenzvertrag zustimmen

Automatische Updates

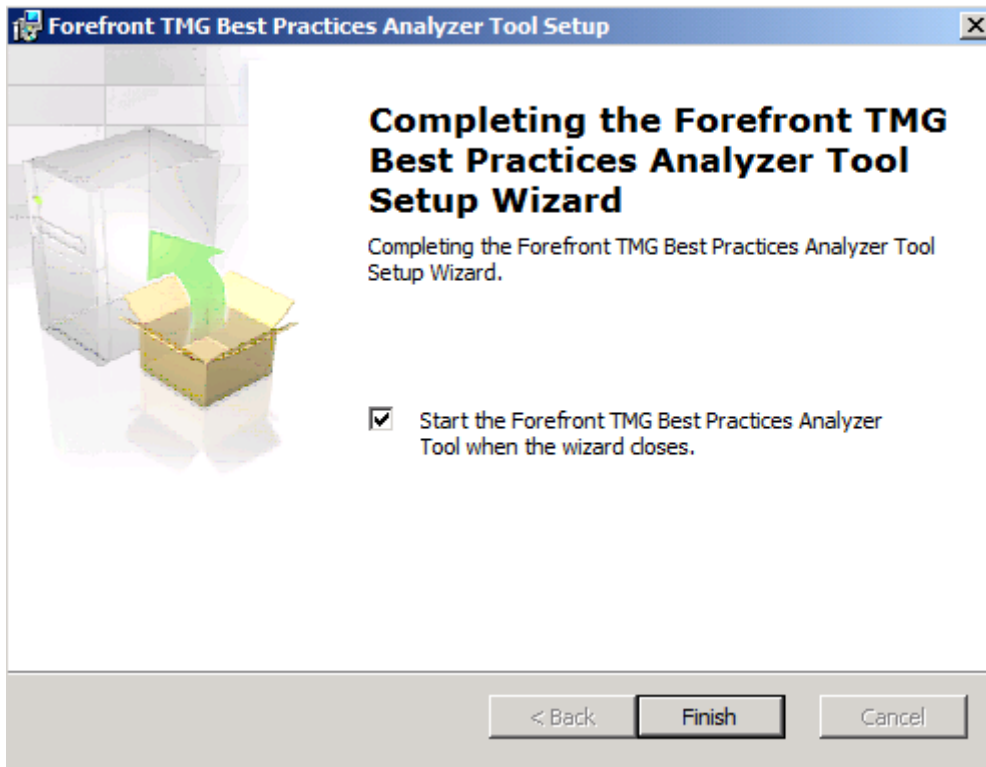


CEIP yes ☺

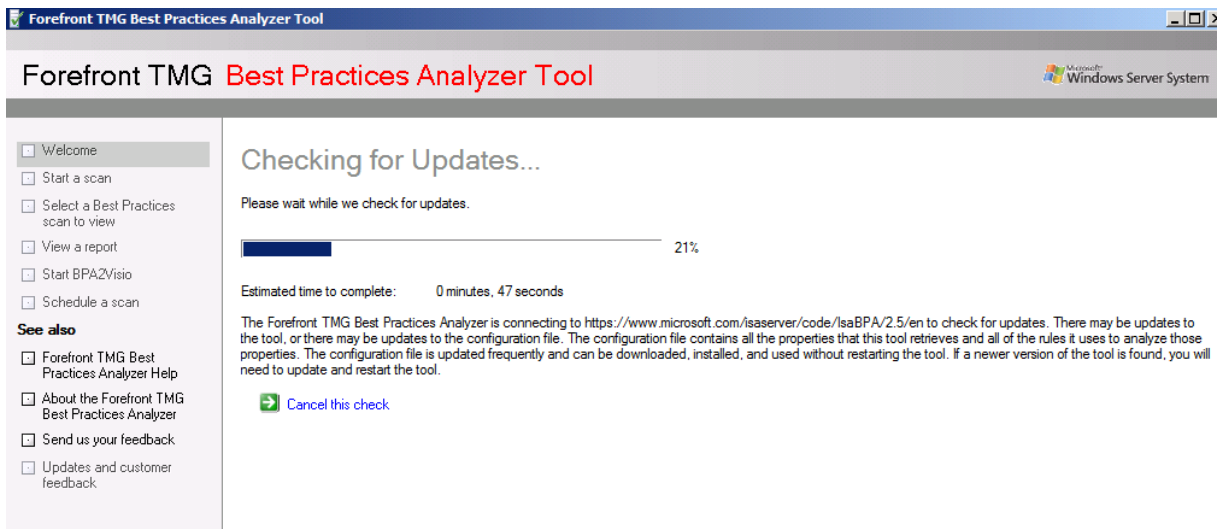


Feuer frei

Starten



Check for Updates



Neuer Scan

Forefront TMG Best Practices Analyzer Tool

Forefront TMG Best Practices Analyzer Tool

Microsoft Windows Server System

- Welcome
- Start a scan
- Select a Best Practices scan to view
- View a report
- Start BPA2Visio
- Schedule a scan

See also

- Forefront TMG Best Practices Analyzer Help
- About the Forefront TMG Best Practices Analyzer
- Send us your feedback
- Updates and customer feedback

Welcome to the Forefront TMG Best Practices Analyzer

This tool examines the Forefront TMG computer. During the scan, configuration information is gathered and analyzed from several sources (for example, WMI, registry, Forefront TMG configuration), and verified for correctness.

When the gathering and analysis process is complete, a report is generated, listing found issues, arranged by severity. For each issue, the tool provides a detailed description of the problem and how it can be fixed.

You can begin a new scan, or view an existing scan report.

- Select options for a new scan
- Select a Best Practices scan to view

Forefront TMG Best Practices Analyzer Tool

Forefront TMG Best Practices Analyzer Tool

- Welcome
- Start a scan
- Select a Best Practices scan to view
- View a report
- Start BPA2Visio
- Schedule a scan

See also

- Forefront TMG Best Practices Analyzer Help
- About the Forefront TMG Best Practices Analyzer
- Send us your feedback

Start a Scan

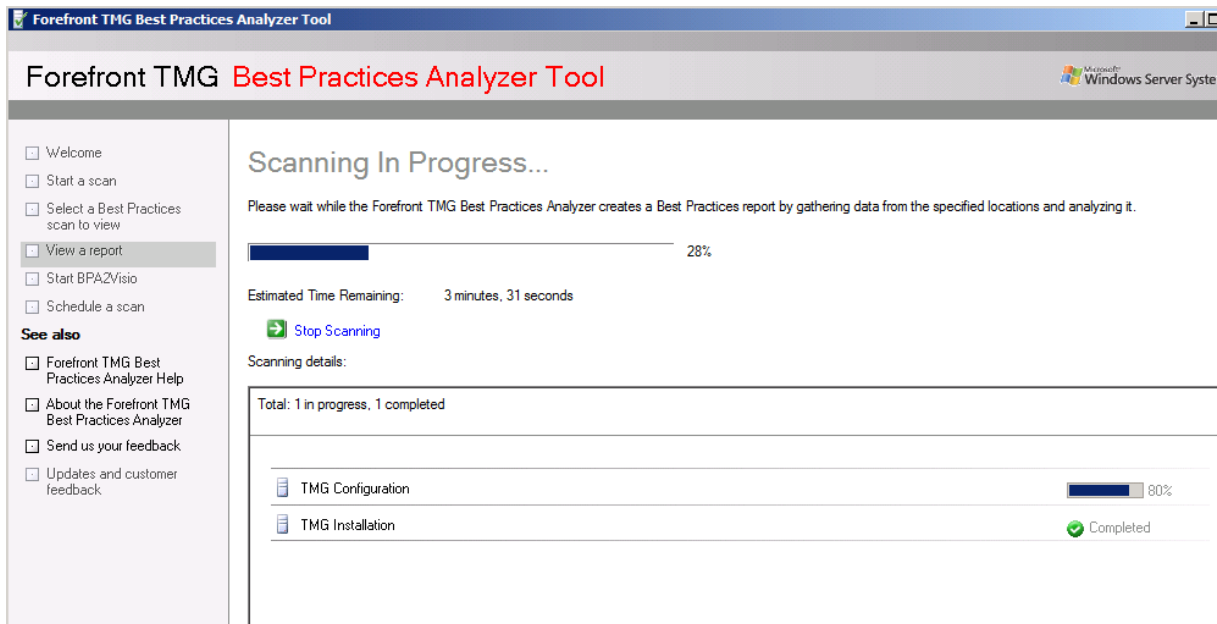
Enter the scan label:

Enter the AD server:

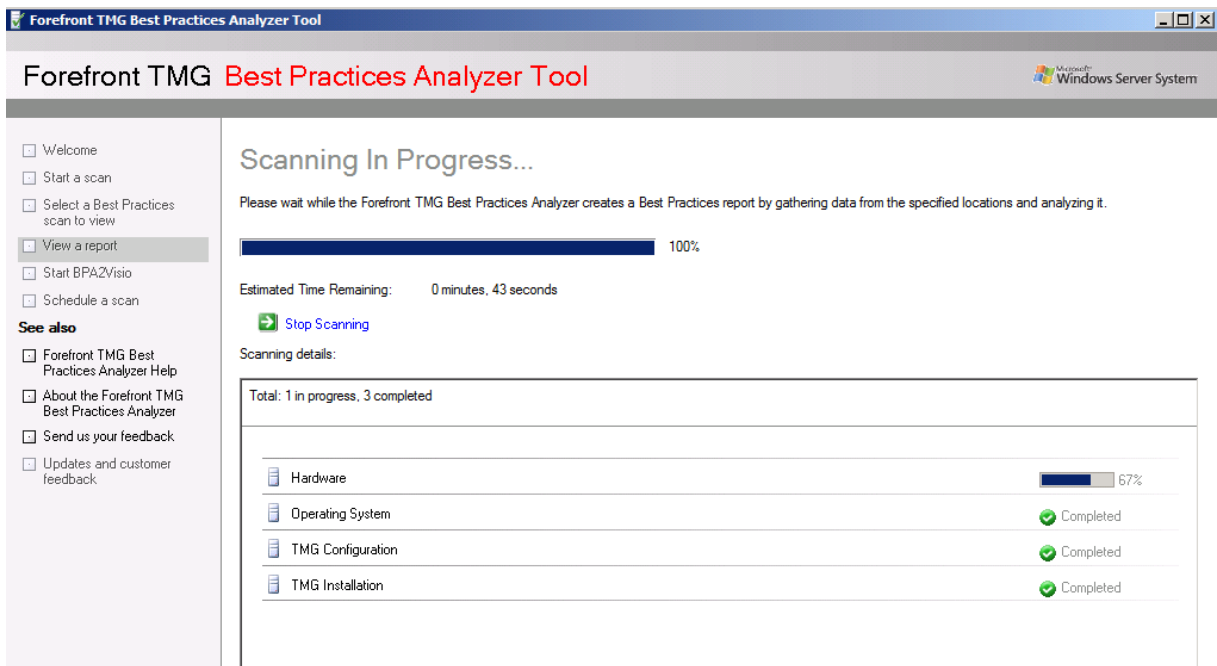
Scan type:

[Start scanning](#)

Dauert ein bisschen



Sehr lange, aber meine Test VM hat auch nur 3 GB RAM ☹



Oh je, der kleine ist Scheintod

Forefront TMG Best Practices Analyzer Tool

Forefront TMG Best Practices Analyzer Tool

Microsoft Windows Server System

- Welcome
- Start a scan
- Select a Best Practices scan to view
- View a report
- Start BPA2/visio
- Schedule a scan

See also

- Forefront TMG Best Practices Analyzer Help
- About the Forefront TMG Best Practices Analyzer
- Send us your feedback
- Updates and customer feedback

View Best Practices Report

FirstScan

Select Report Type: List Reports Tree Reports Other Reports

Has this tool been helpful? Yes No

Critical Issues | All Issues | Informational Items

All Issues (27 items)

Print report | Export report | Find | Arrange by: Class

- An access rule has an empty set of sources
- An access rule has an empty set of sources
- Connection to Microsoft Reputation Services Failed
- Connection to Update Source Failed
- Forefront TMG cannot connect to the specified configuration storage server.
- The Configuration Storage Access Blocked error alert was signaled 2 times
- The Definition Updates Checking Failed error alert was signaled 1 times
- The Definition Updating Failed error alert was signaled 1 times
- The secure channel to the primary domain controller cannot be verified
- The secure channel to the trusted domain controller cannot be verified
- The WFP Filter Conflict Detected error alert was signaled 5 times
- A policy rule blocks FTP uploads
- A policy rule blocks FTP uploads
- A policy rule blocks FTP uploads
- A policy rule blocks FTP uploads

Noch mehr

Forefront TMG Best Practices Analyzer Tool

Forefront TMG Best Practices Analyzer Tool

Microsoft Windows Server System

- Welcome
- Start a scan
- Select a Best Practices scan to view
- View a report
- Start BPA2/visio
- Schedule a scan

See also

- Forefront TMG Best Practices Analyzer Help
- About the Forefront TMG Best Practices Analyzer
- Send us your feedback
- Updates and customer feedback

View Best Practices Report

FirstScan

Select Report Type: List Reports Tree Reports Other Reports

Has this tool been helpful? Yes No

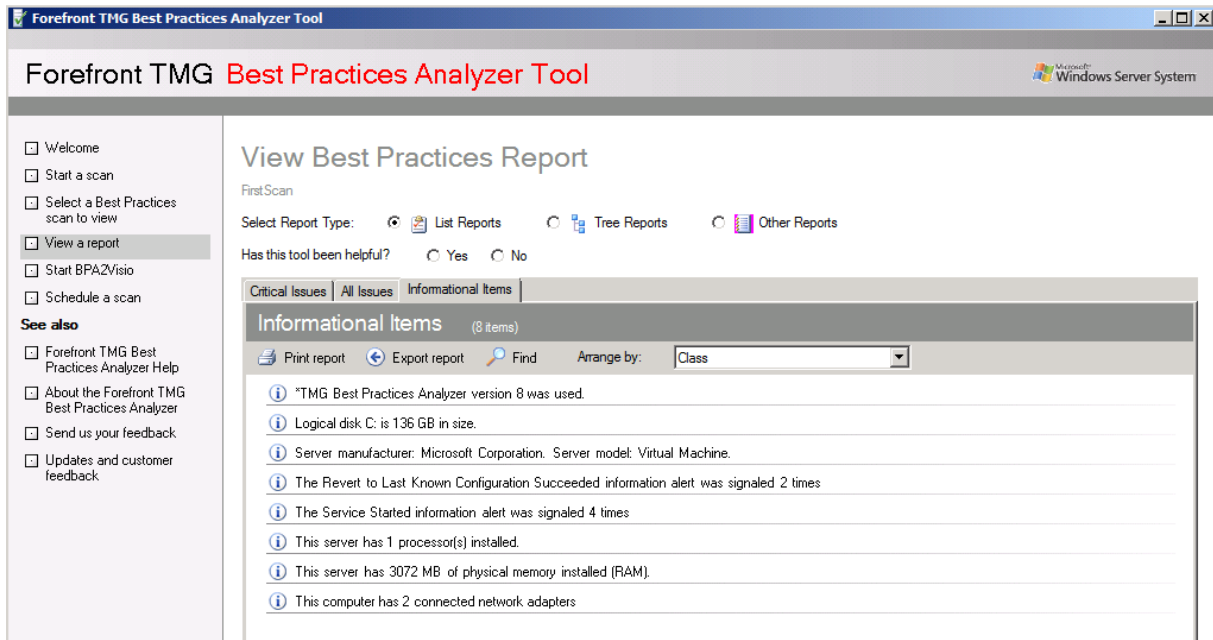
Critical Issues | All Issues | Informational Items

All Issues (27 items)

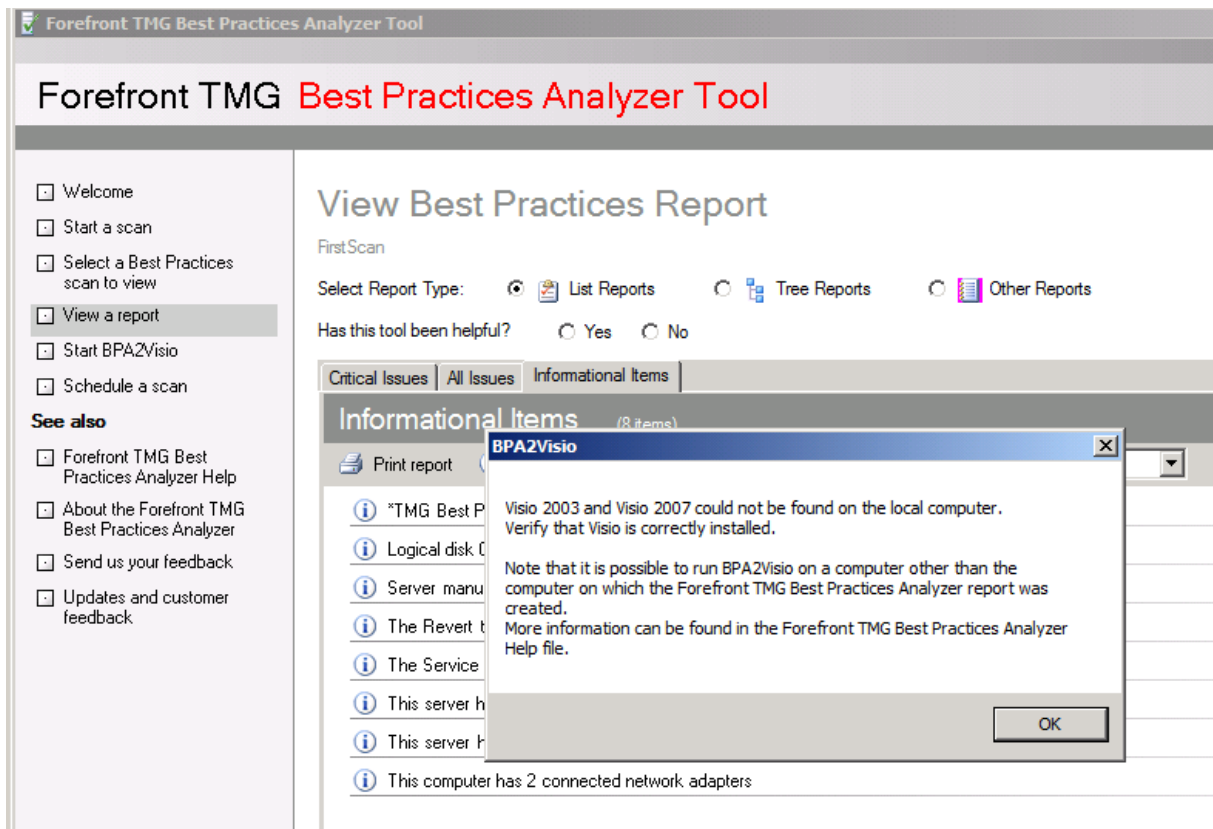
Print report | Export report | Find | Arrange by: Class

- A policy rule blocks FTP uploads
- A policy rule blocks FTP uploads
- A policy rule blocks FTP uploads
- A policy rule blocks FTP uploads
- A policy rule blocks FTP uploads
- Forefront TMG Records Logs to the System Drive
- Strict RPC compliance is enforced in an access rule that allows traffic to or from the Local...
- Strict RPC compliance is enforced in an access rule that allows traffic to or from the Local...
- The Configuration error warning alert was signaled 1 times
- The lower and upper limits of the source port range for an access rule are equal
- The Malware Inspection Currently Unavailable warning alert was signaled 1 times
- The network adapter [00000019] SSL Network Tunneling is disconnected
- Multiple default gateways are configured
- Primary DNS failed to respond
- DNS search order is blank
- Forefront TMG is running on a virtual server

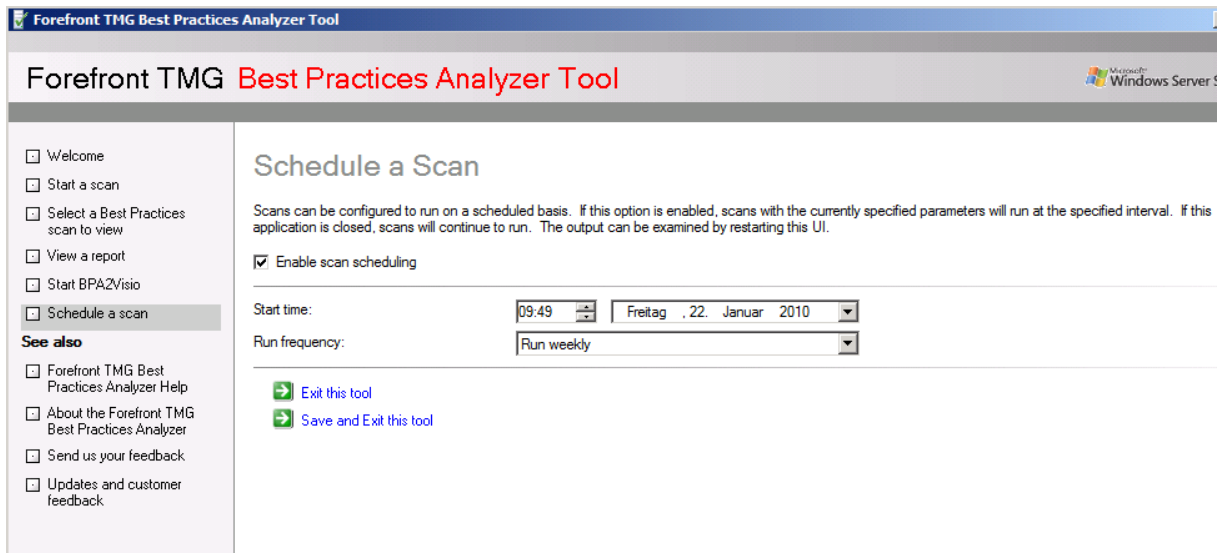
Zusammenfuehrende Informationen



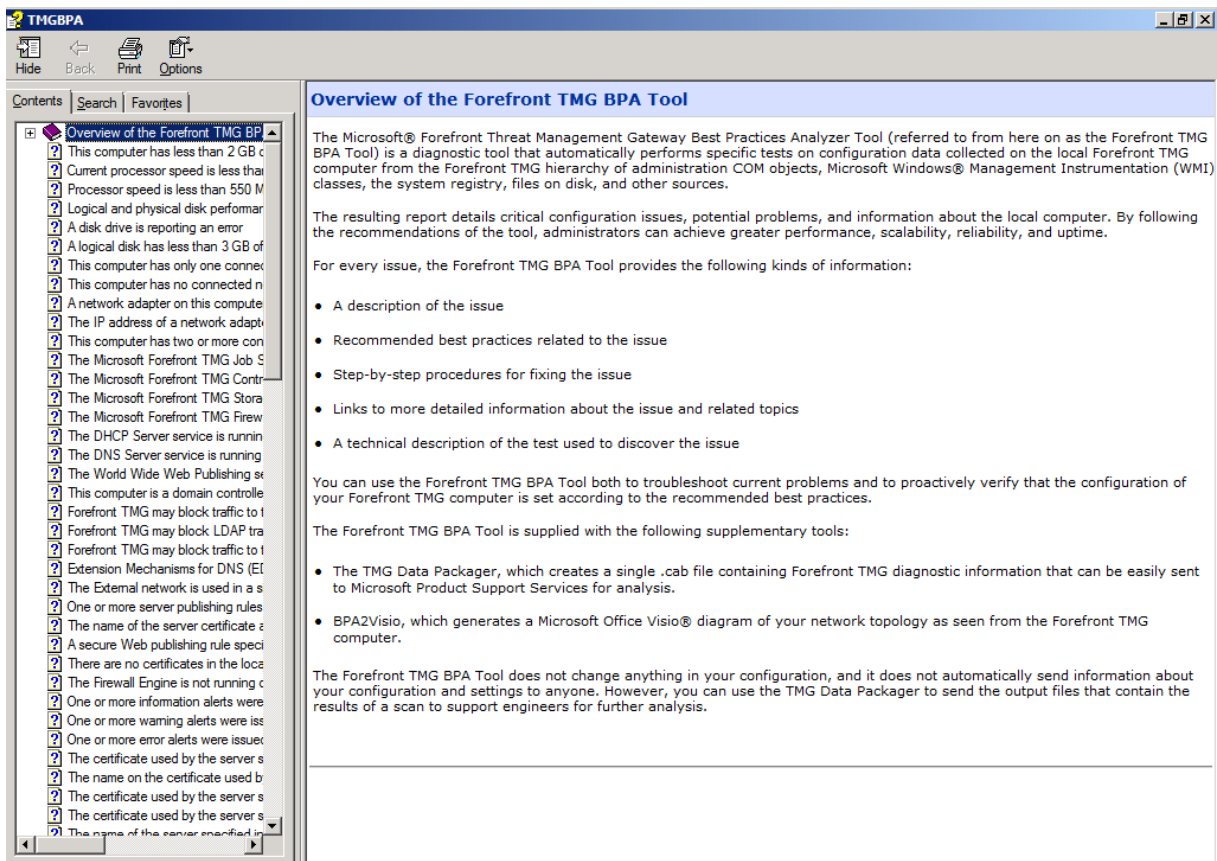
BPA2Visio



Schedule a scan



TMGBPA Help



Also in Summe auf den ersten Blick wenig neues (oder gar nichts)