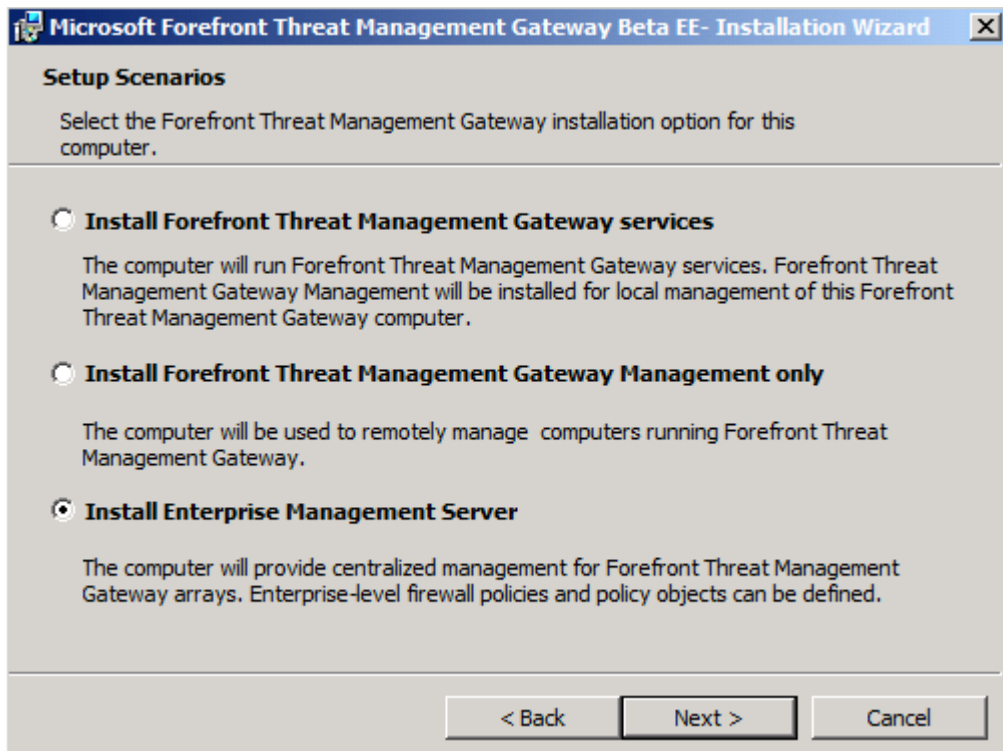
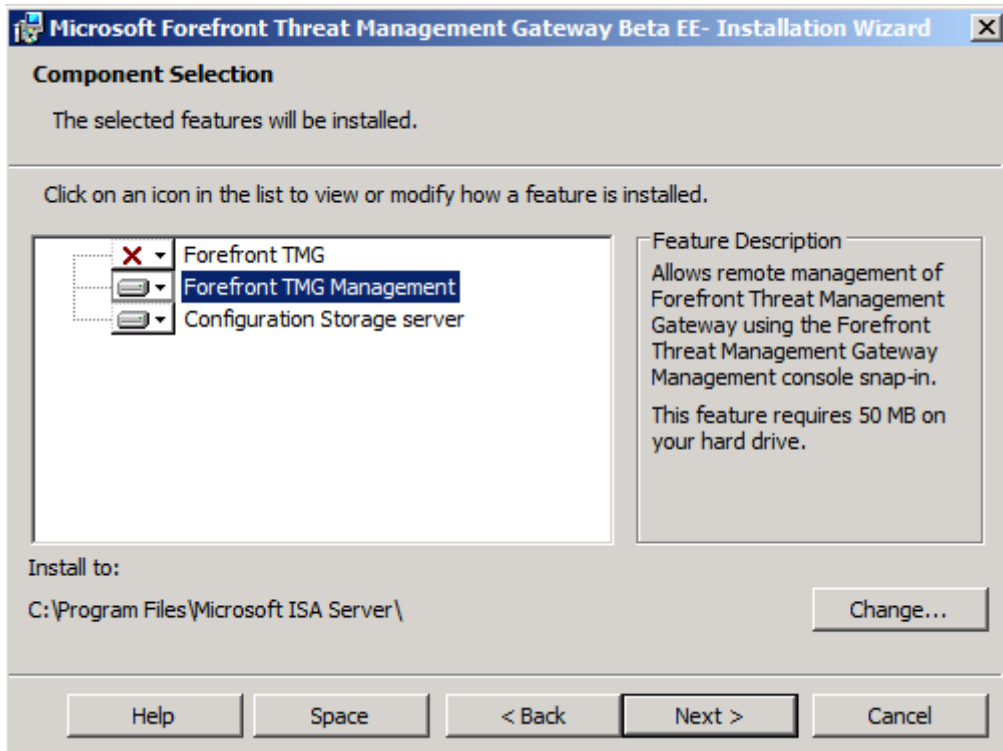


Integration von Forefront TMG in ein TMG Array

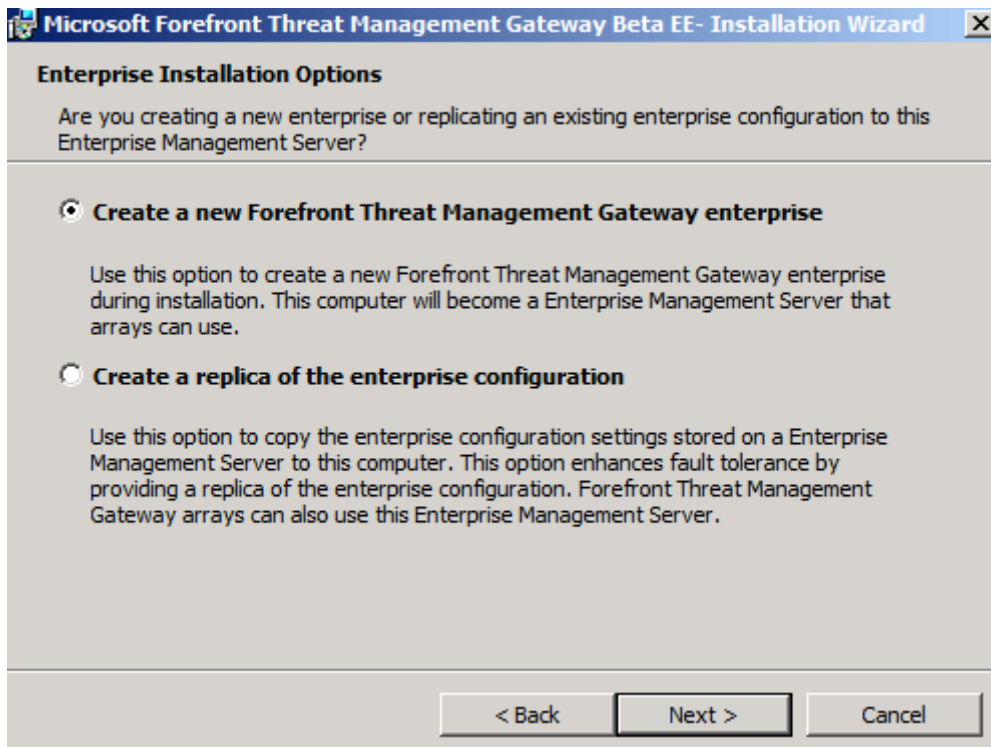
Enterprise Management Server Installation



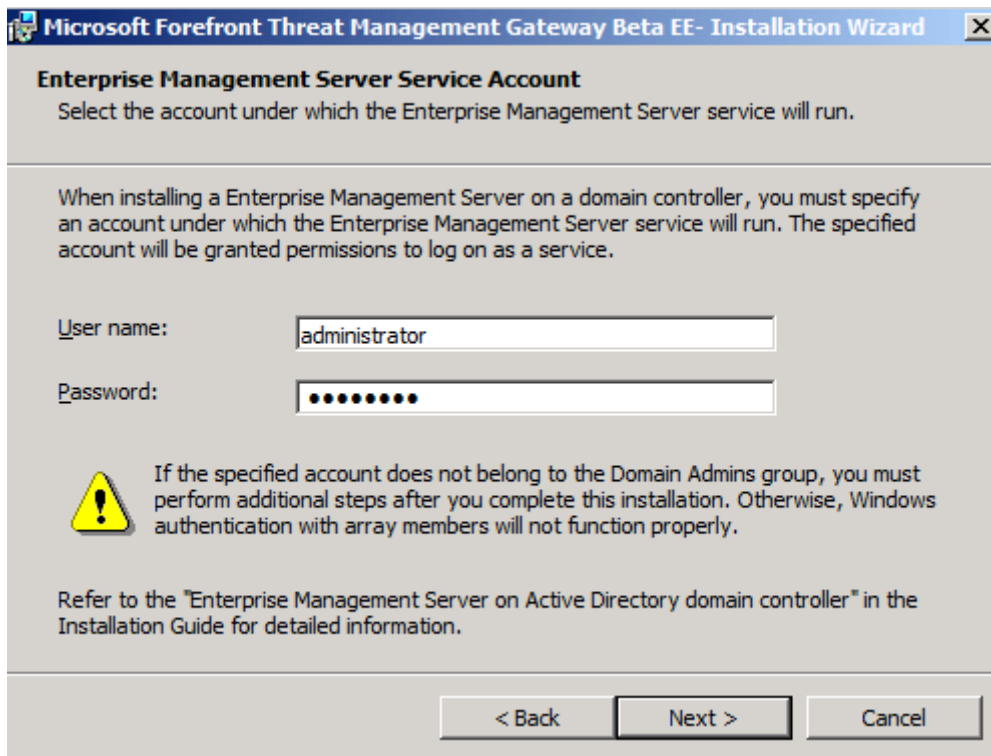
TMG soll da nicht drauf!



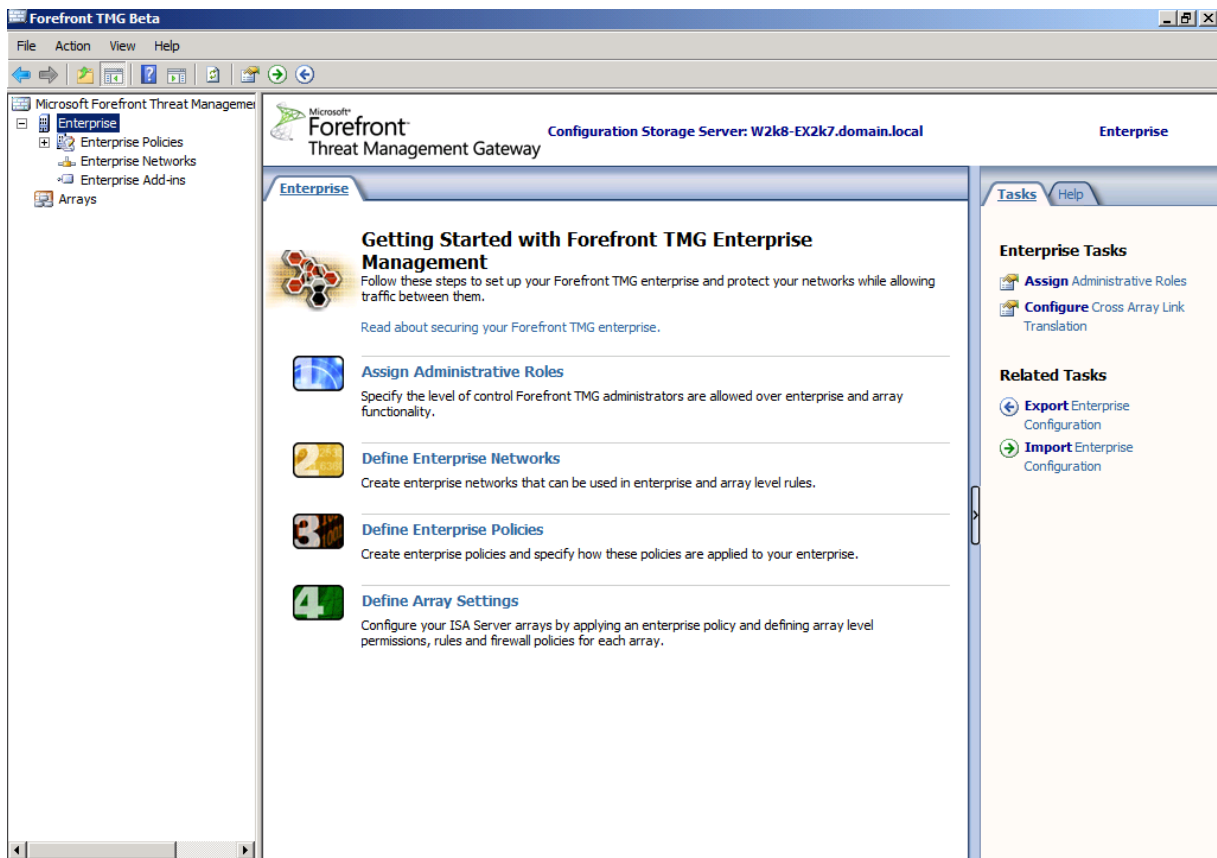
Neues TMG Enterprise



Account angeben! In der Praxis natuerlich **NICHT** den Oberchef nehmen!



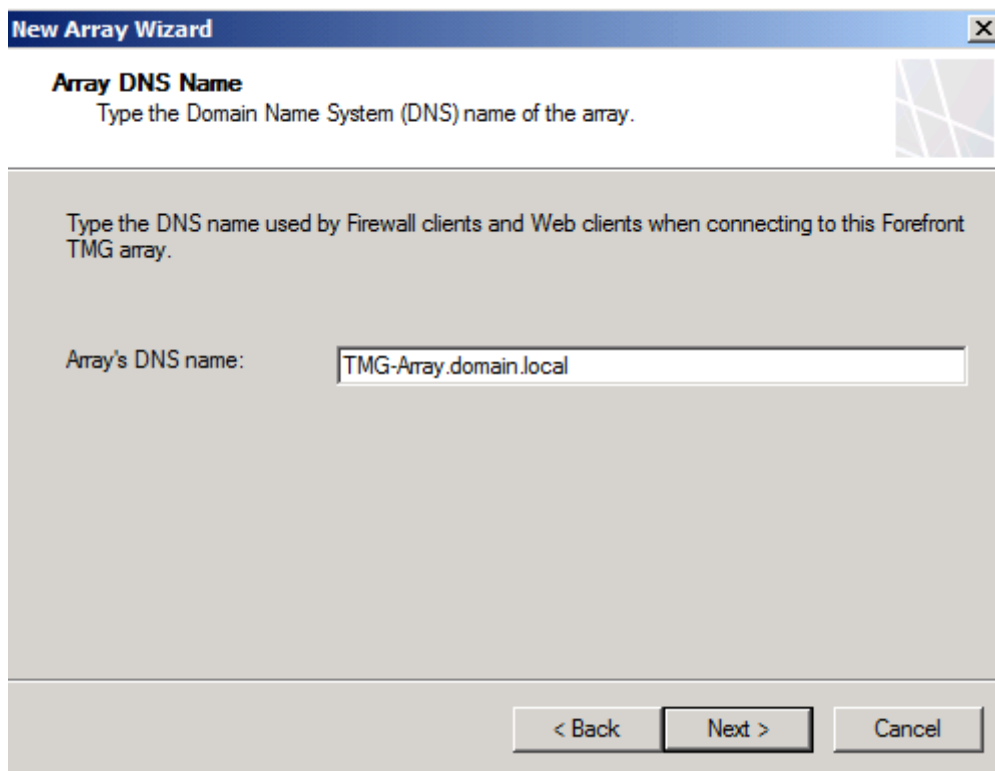
Console starten



Neues Array erstellen



DNS Namen angeben und im DNS pflegen



New Array Wizard [X]

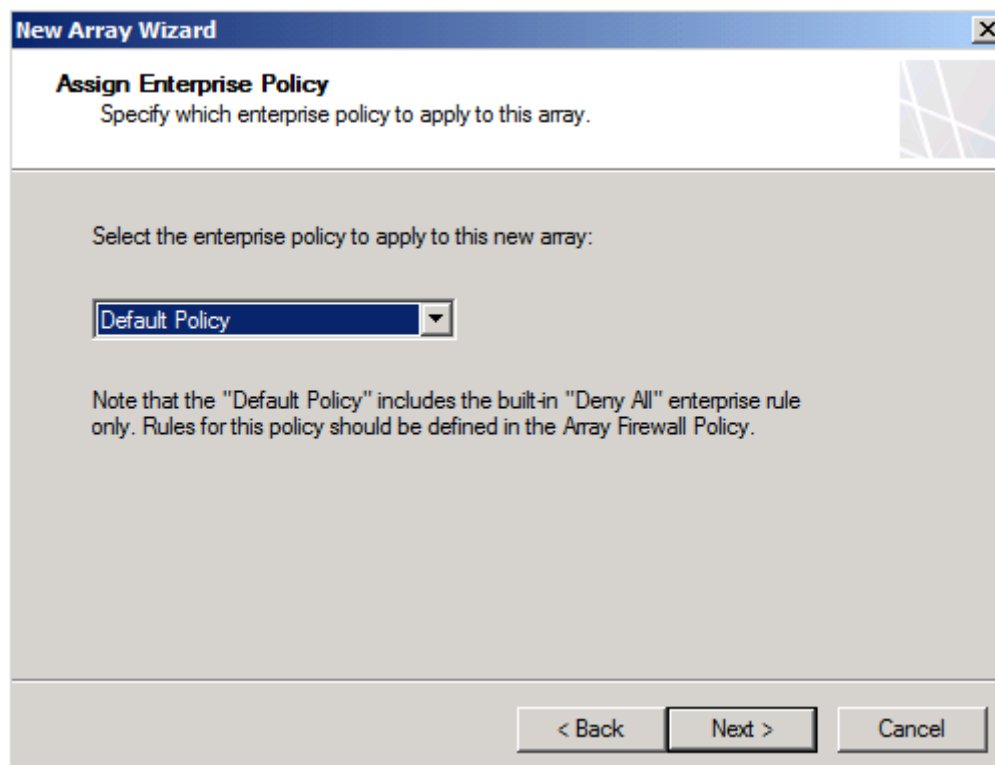
Array DNS Name
Type the Domain Name System (DNS) name of the array.

Type the DNS name used by Firewall clients and Web clients when connecting to this Forefront TMG array.

Array's DNS name:

< Back Next > Cancel

Zuweisen der Enterprise Policy. in der Praxis erstellt man eine ode mehrere zusaetzliche Policies.



New Array Wizard [X]

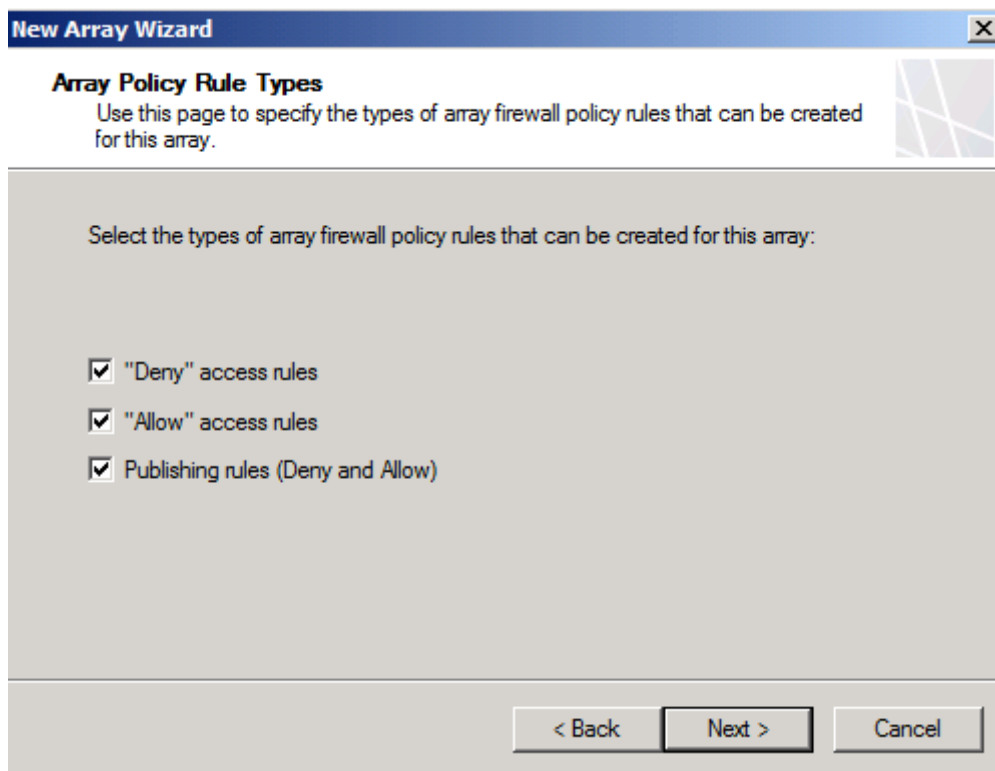
Assign Enterprise Policy
Specify which enterprise policy to apply to this array.

Select the enterprise policy to apply to this new array:

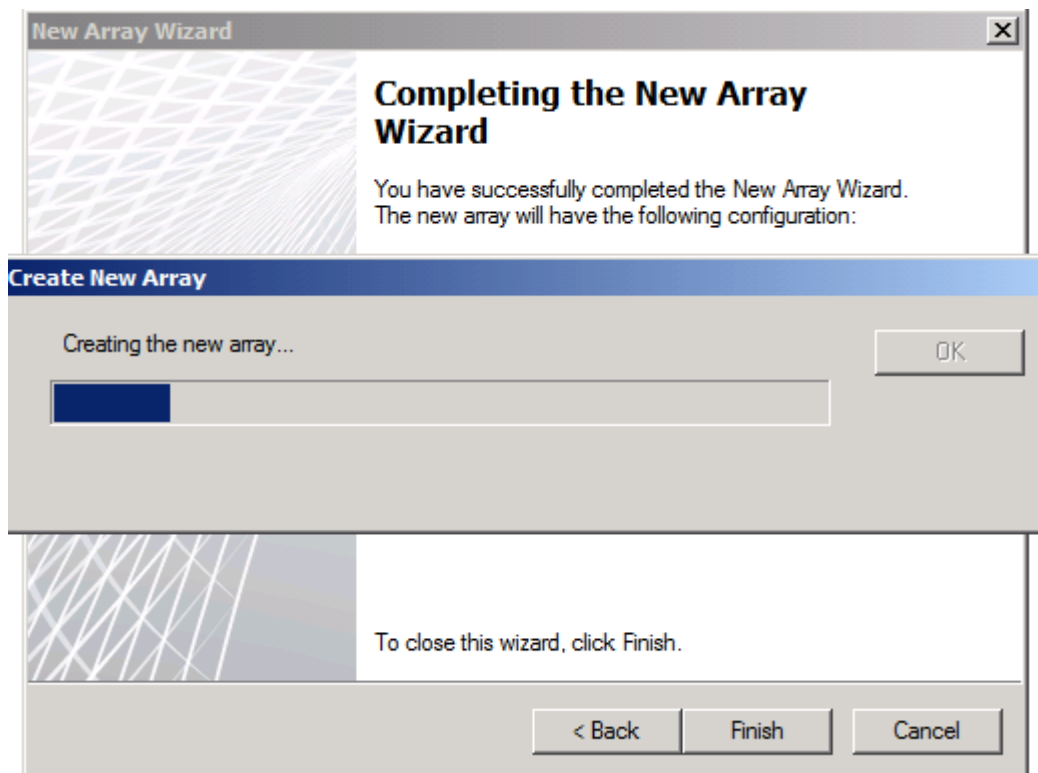
Note that the "Default Policy" includes the built-in "Deny All" enterprise rule only. Rules for this policy should be defined in the Array Firewall Policy.

< Back Next > Cancel

Was ist im Array erlaubt?

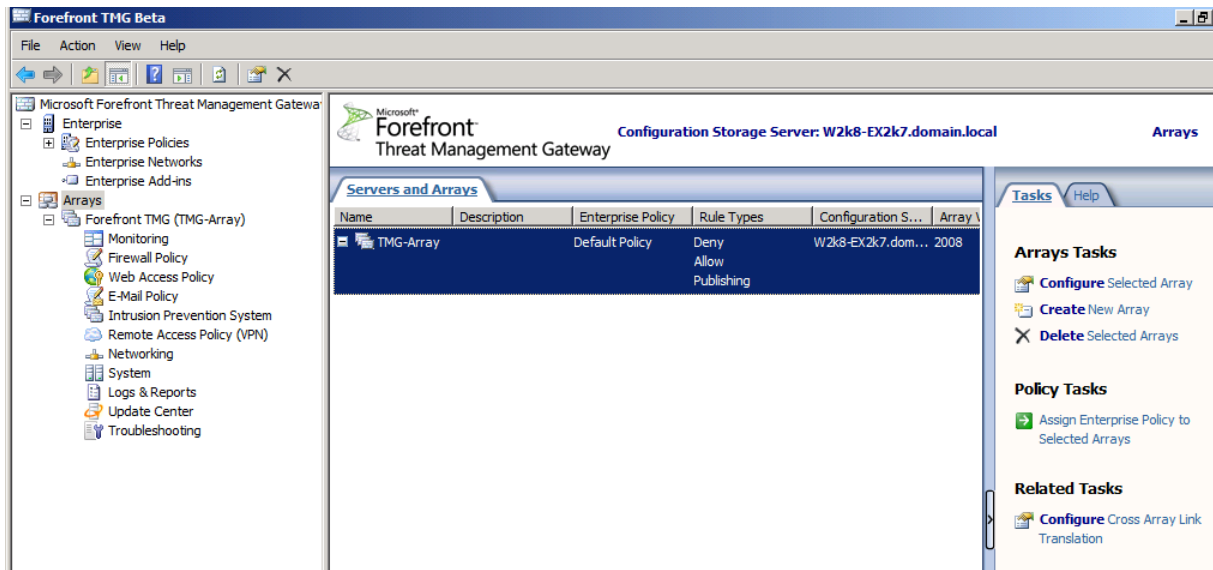


Feuer frei



Nach Erstellung des Arrays die Konfiguration speichern

Das Array ist da, fehlen noch die Server :-)



TMG Server Installation

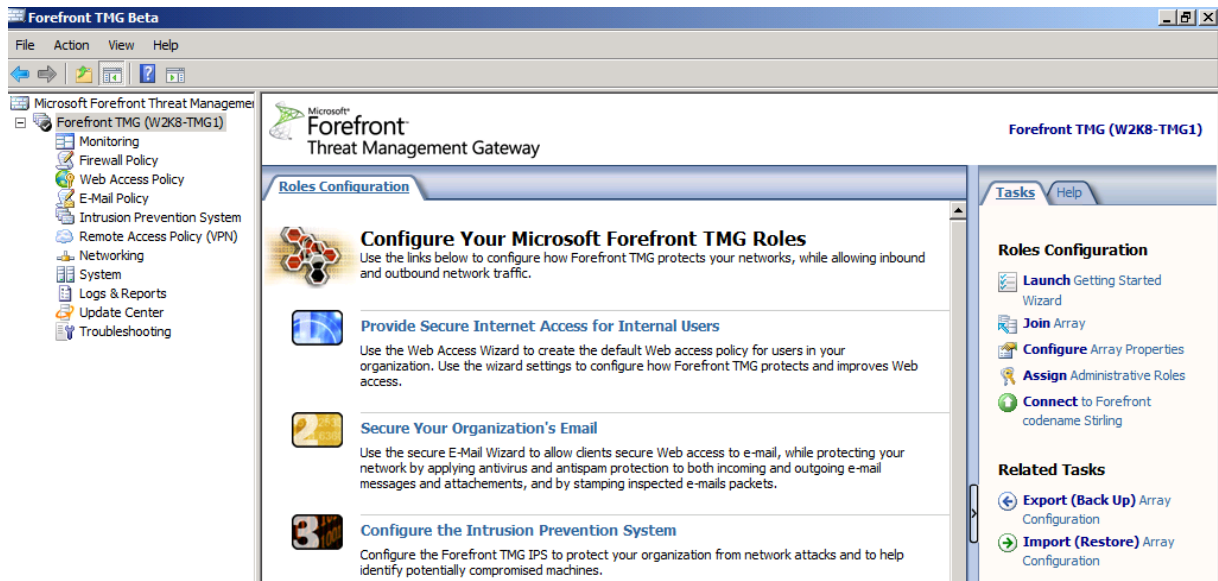


Ein CSS wird benötigt

Die Installation eines TMG Server erspare ich mir mal. Wer wissen will, wie man die TMG Serverfunktionen installiert, liest:

<http://www.isaserver.org/tutorials/Installing-configuring-Microsoft-Forefront-TMG-Beta2.html>

Dem erstellten Array beitreten



Join Array Wizard



Standalone oder EMS verwaltetes Array

Join Array Wizard [X]

Array Membership Type
Select the array membership option for this Forefront TMG server.

Array membership options:

- Join an array managed by an EMS server.
- Join a standalone array managed by a designated array member (array manager).

< Back Next > Cancel

Angabe des EMS Servers

Join Array Wizard [X]

Enterprise Management Server Details
Select the EMS server and specify the user account used to connect to the selected server.

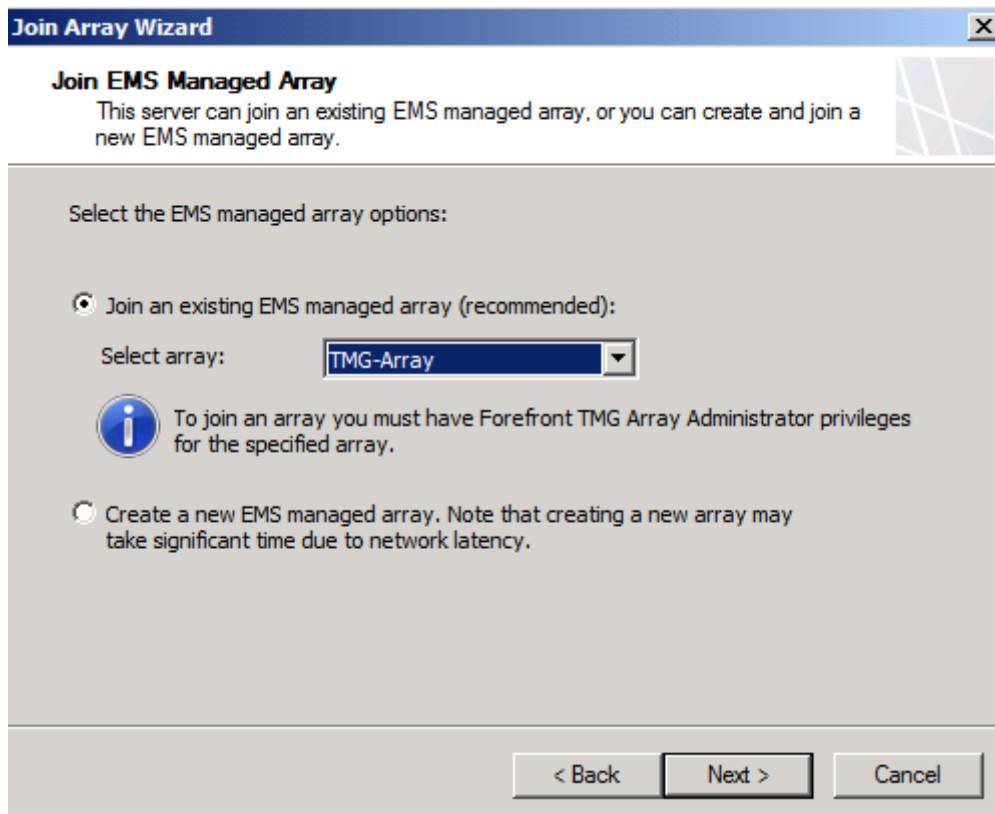
EMS fully qualified domain name (FQDN):
W2k8-EX2k7.domain.local Browse...

User account with rights to connect to the EMS server

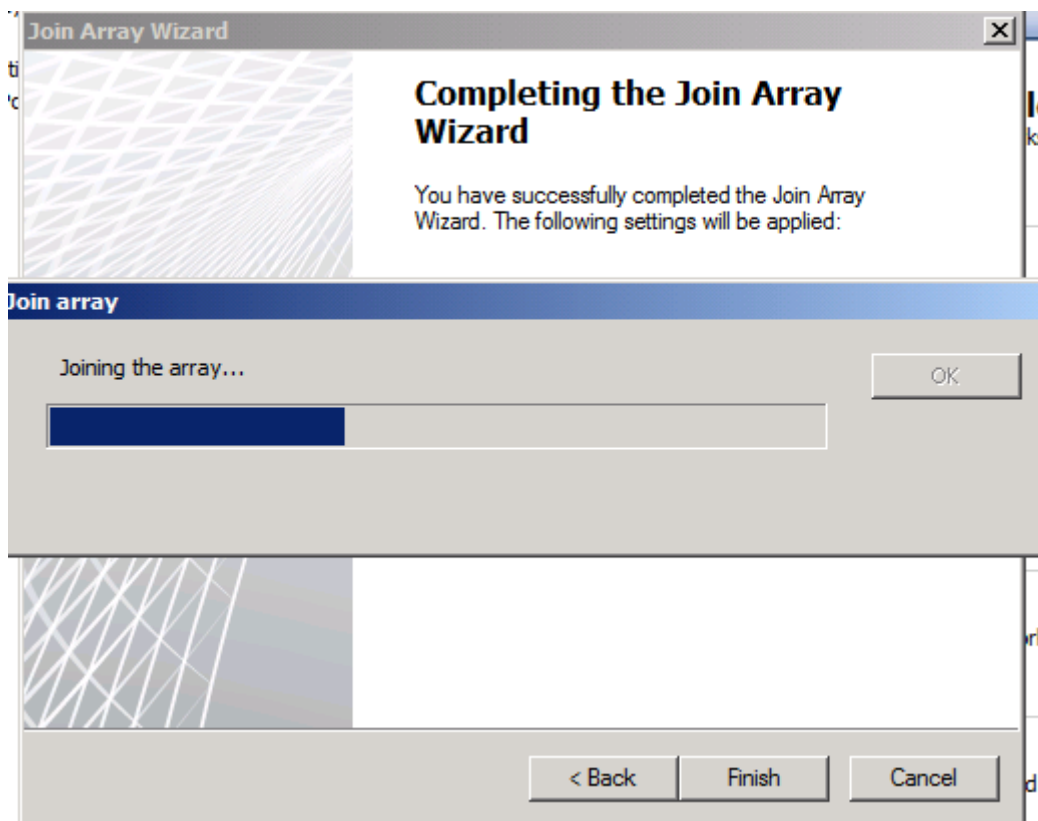
- Connect using the credentials of the logged on user
- Connect using this account:
User name: _____
Password: _____

< Back Next > Cancel

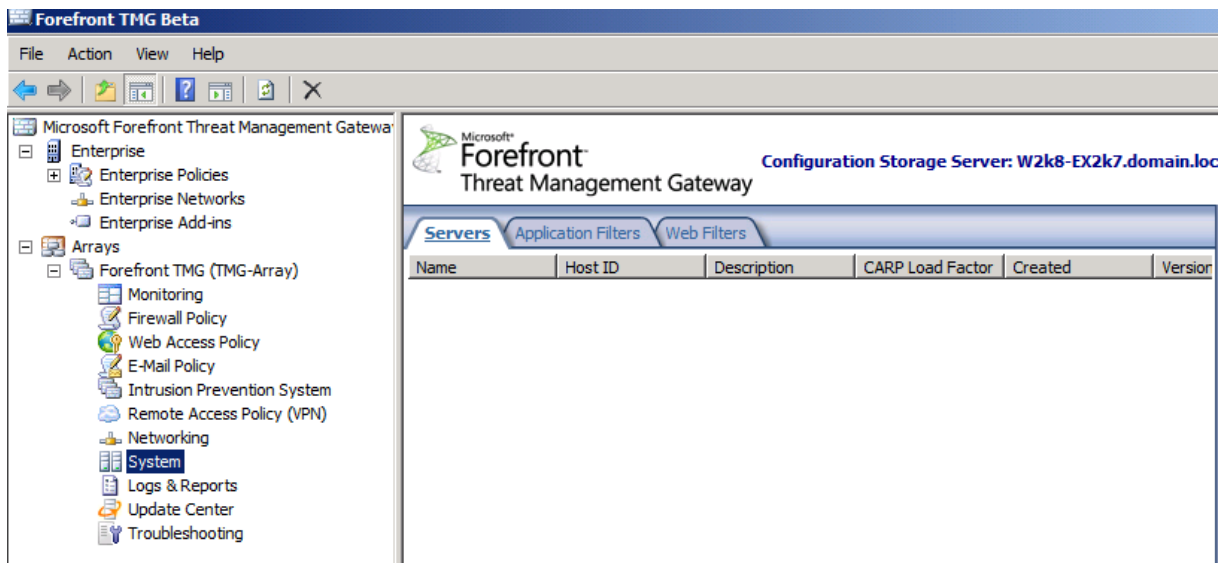
Neues Array oder vorhandenem beitreten?



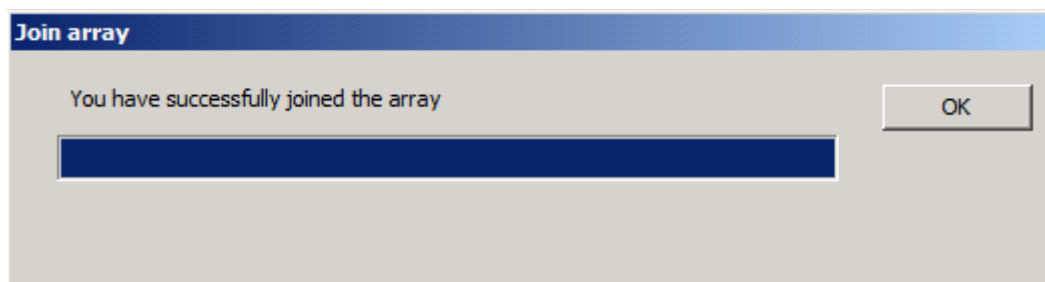
Haste mal nen join



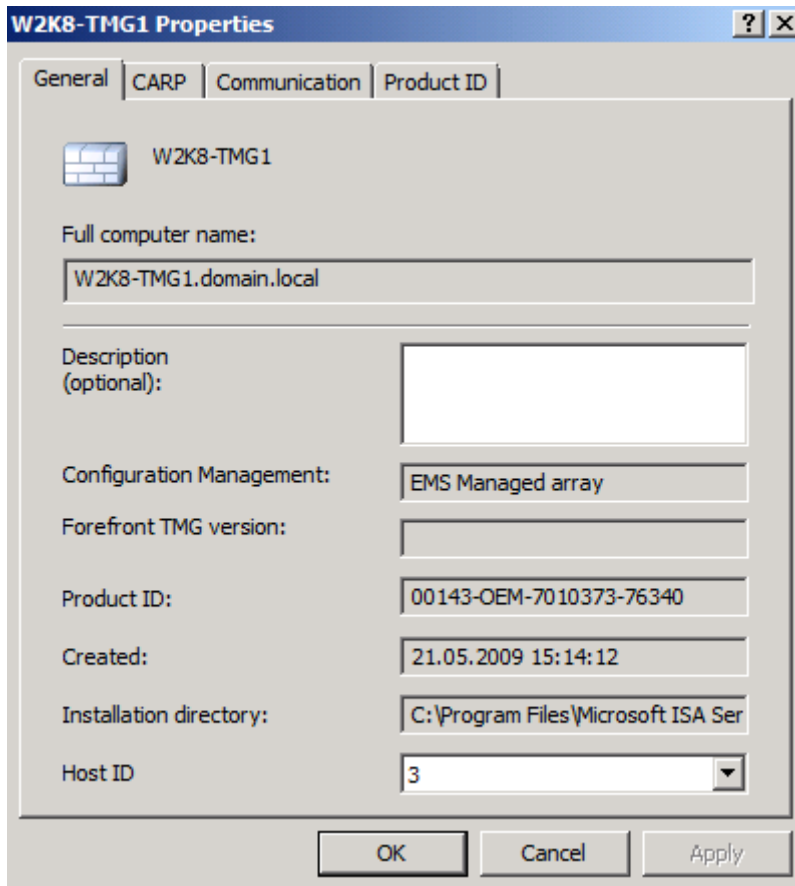
Noch ist das Array leer :-)



Join erfolgreich. Jetzt sollte am EMS was zu sehen sein



Juup, dem ist so!

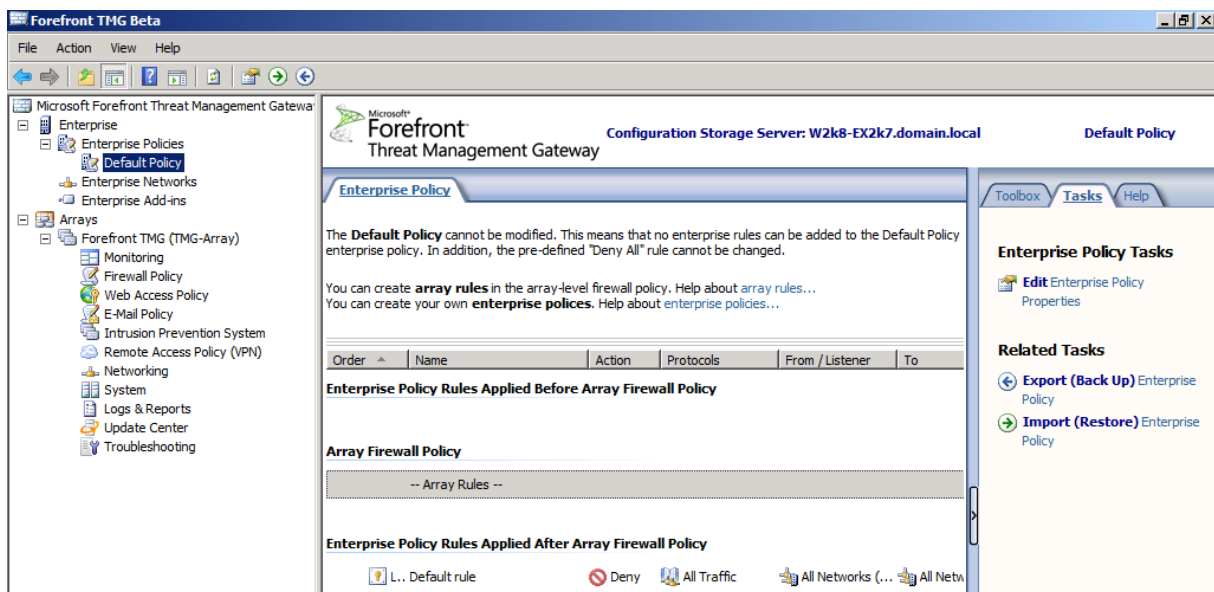


Jetzt noch den zweiten Server joinen

DONE!

EMS Konsole starten

Hier hat sich im Vergleich zu ISA ja nicht viel geendert!



CSS

TMG-Array Properties [?] [X]

Assign Roles | Customer Feedback | Join Microsoft Telemetry Service
Published Configuration Storage | Intra-Array Credentials
General | Policy Settings | Configuration Storage

Specify the Configuration Storage server used to store the array configuration. When the specified server is unavailable, the alternate server will be used.

Configuration Storage server (enter the FQDN):
 Browse...

Alternate Configuration Storage server (optional):
 Browse...

Check the Configuration Storage server for updates every:
15 seconds [v] []

Select the authentication type used for connections between Forefront TMG and the Configuration Storage server:
 Select...

To save these settings, this computer must be able to connect to the specified Configuration Storage servers.

OK Cancel Apply

CARP

W2K8-TMG1 Properties [?] [X]

General | CARP | Communication | Product ID

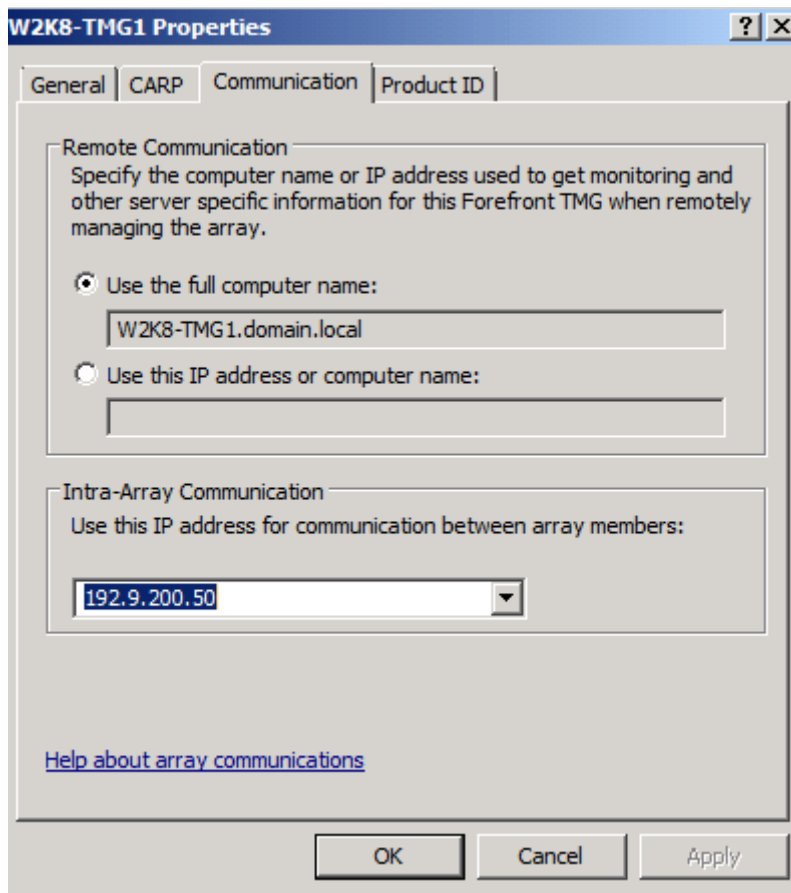
Cache Array Routing Protocol (CARP) divides the cache content between array servers. CARP load factor determines the relative cache availability for this server compared to the rest of the array servers.

Specify the CARP load factor for this Forefront TMG computer:

Load factor:

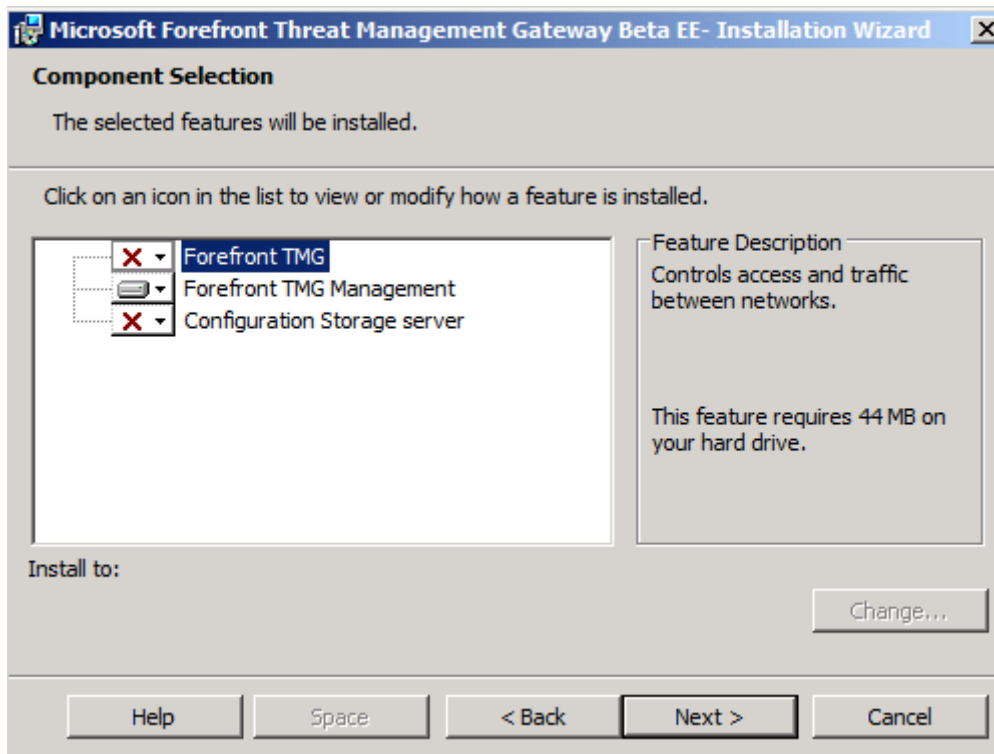
OK Cancel Apply

Kommunikation

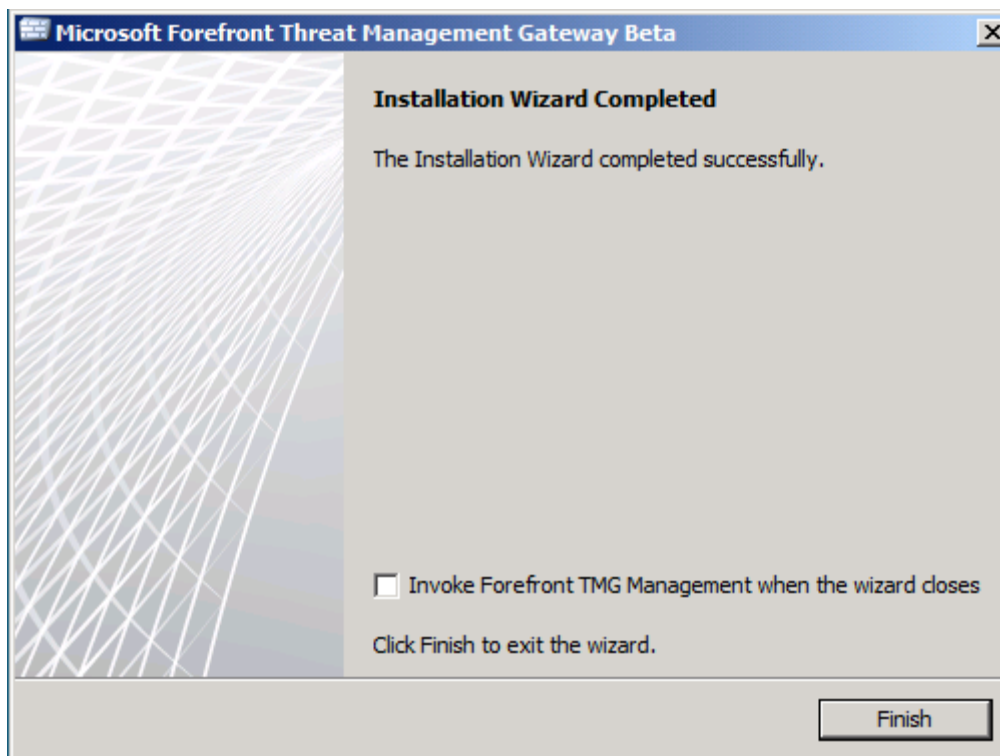


Installation der Management Console





Nach 3 Minuten war alles fertig



Done!