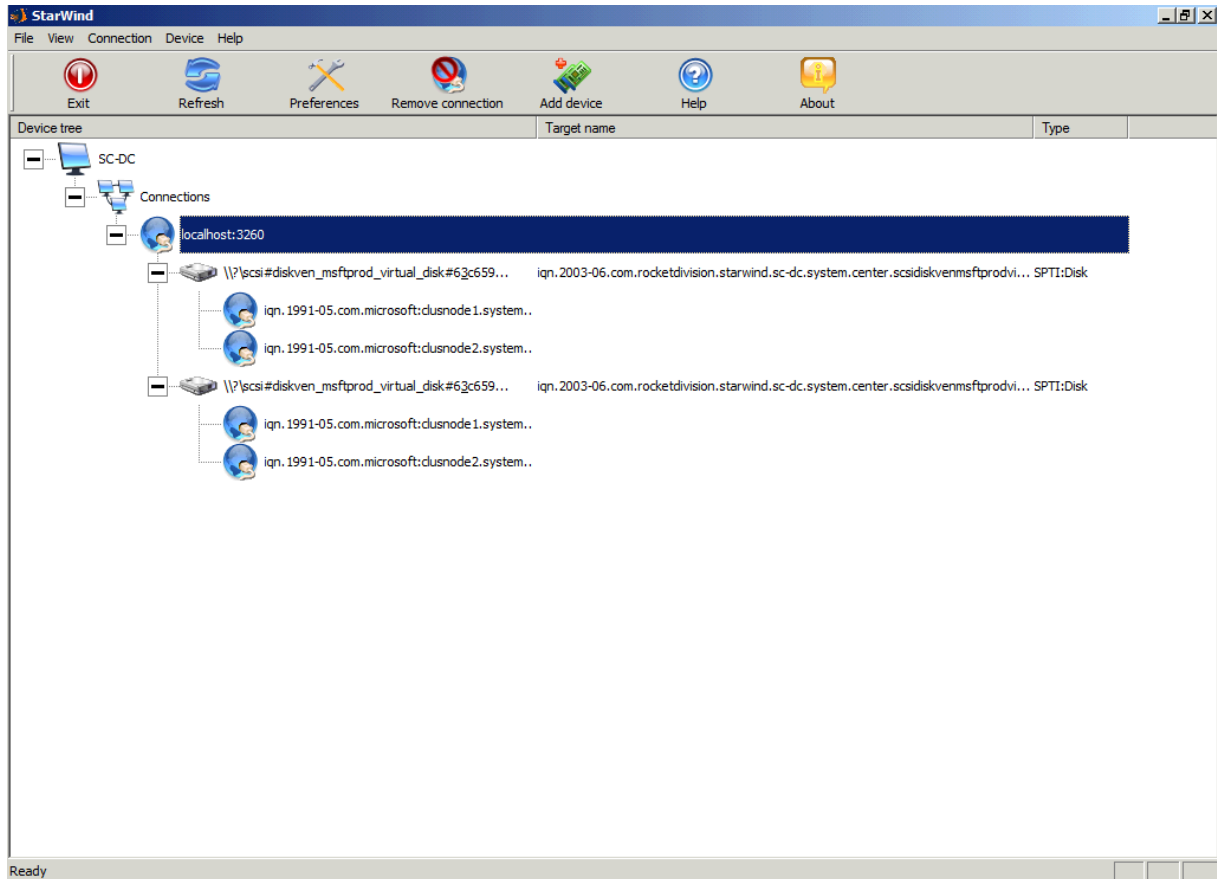


SQL Server 2008 Failover Cluster Installation auf Windows Server 2008

Basis ist ein Testsystem unter Hyper-V mit 16 GB RAM, zwei Clusterknoten und einem Domänencontroller.

Als iSCSI System dient die Software Starwind von Rocketdivision.



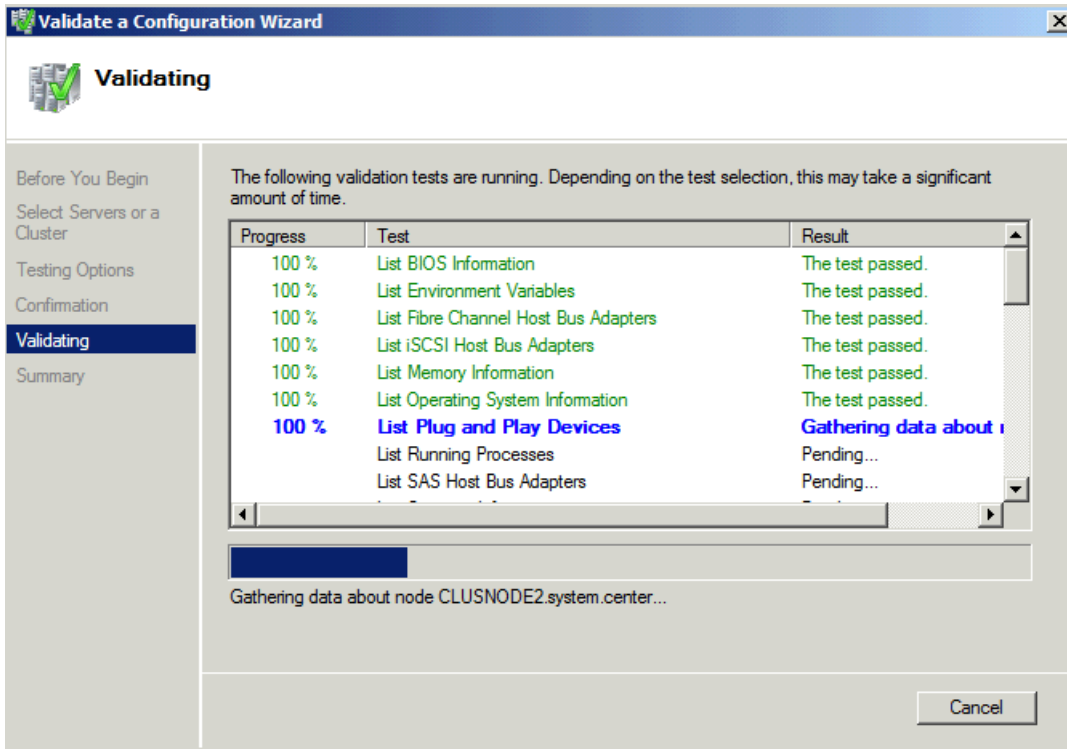
Die Einrichtung von iSCSI wird an anderen Stellen im Internet schon ausführlich beschrieben, so dass ich hier drauf verzichtet habe:

http://searchexchange.techtarget.com/tip/0,,sid43_gci1192586,00.html#

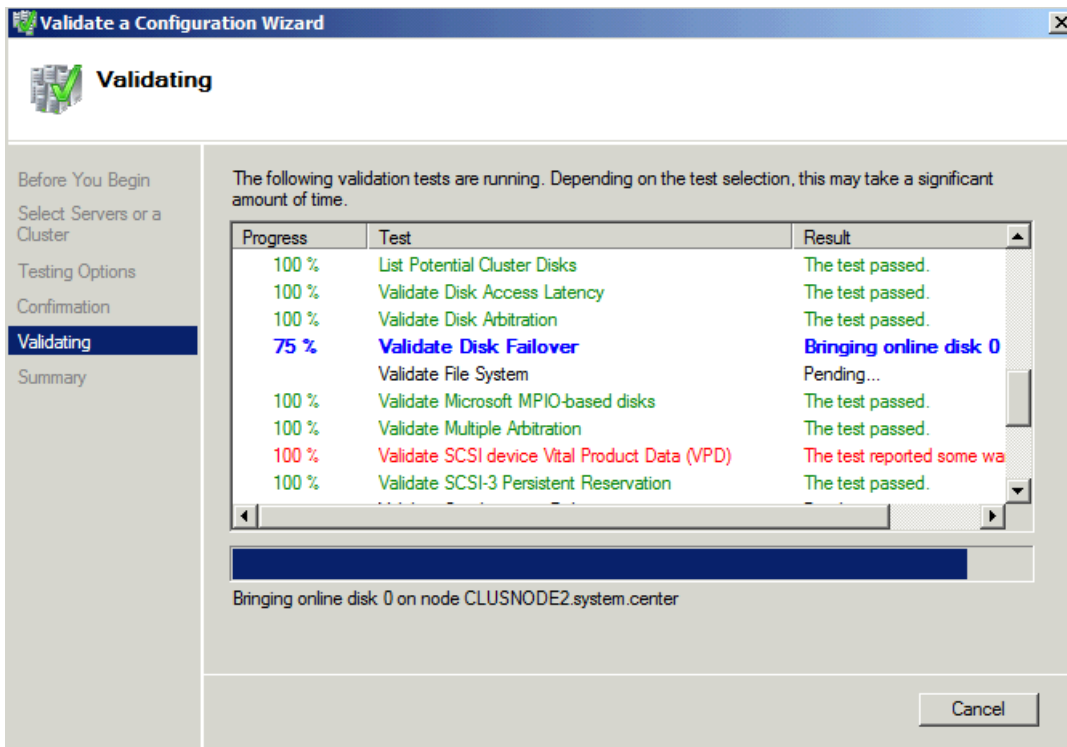
<http://www.msexchange.org/tutorials/Implementing-iSCSI-Exchange-Server-2003.html>

<http://81.209.195.190/SANFuerArmeAberISCsIBesserAlsNAS.aspx>

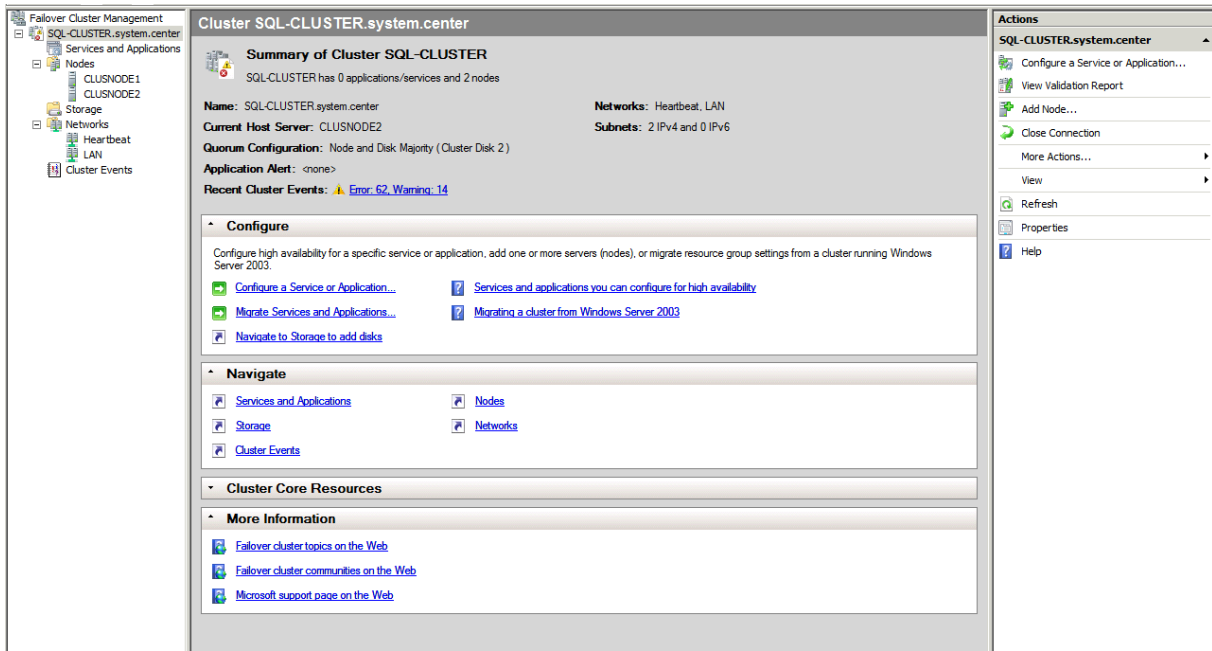
Windows Server 2008 Failover Cluster Validation



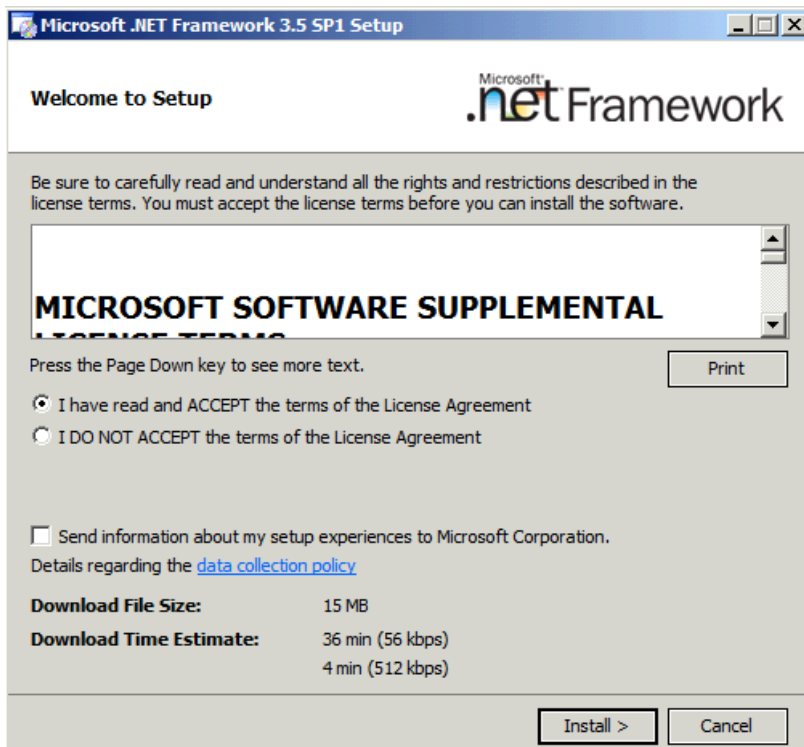
Test Disk Failover

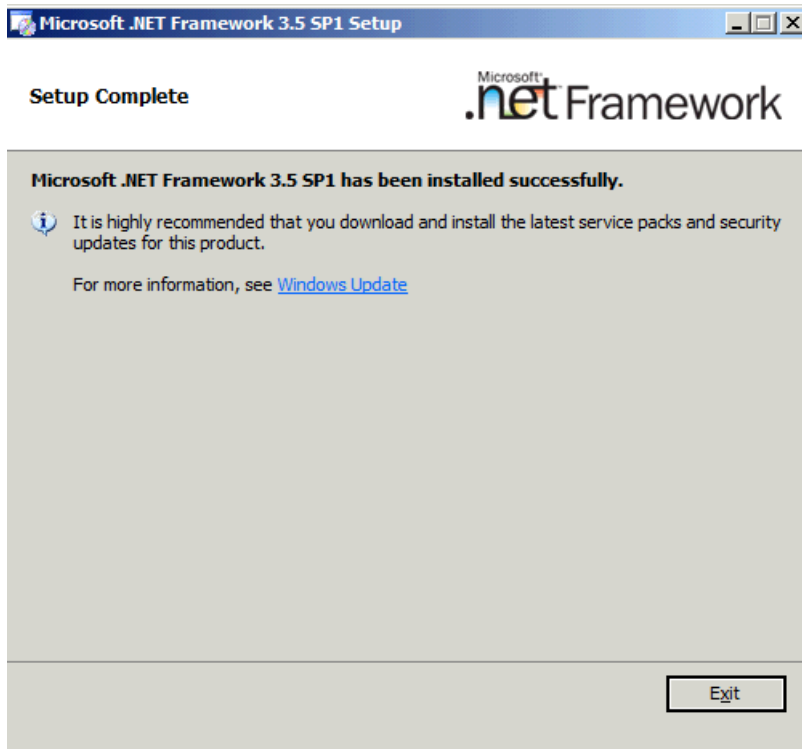


Eingerichteter Schmalspur Cluster

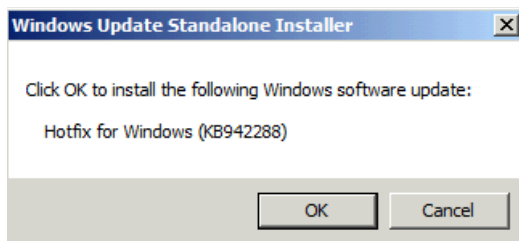
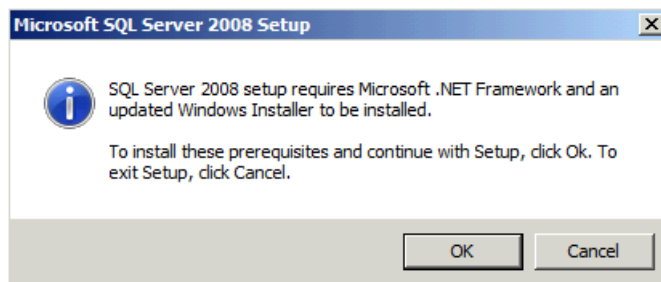


Vor der SQL Installation muss .NET FW 3.5 installiert sein



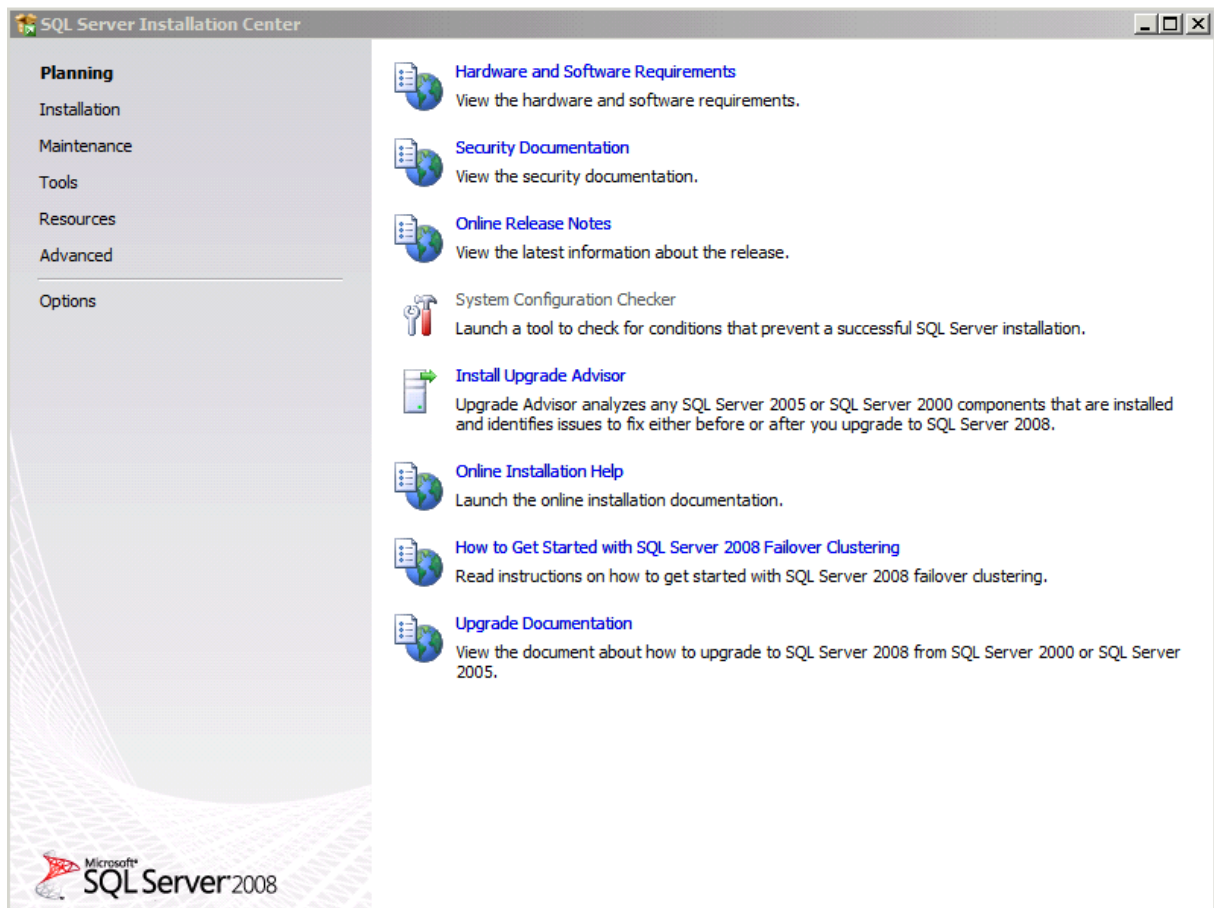


Und noch ein Update

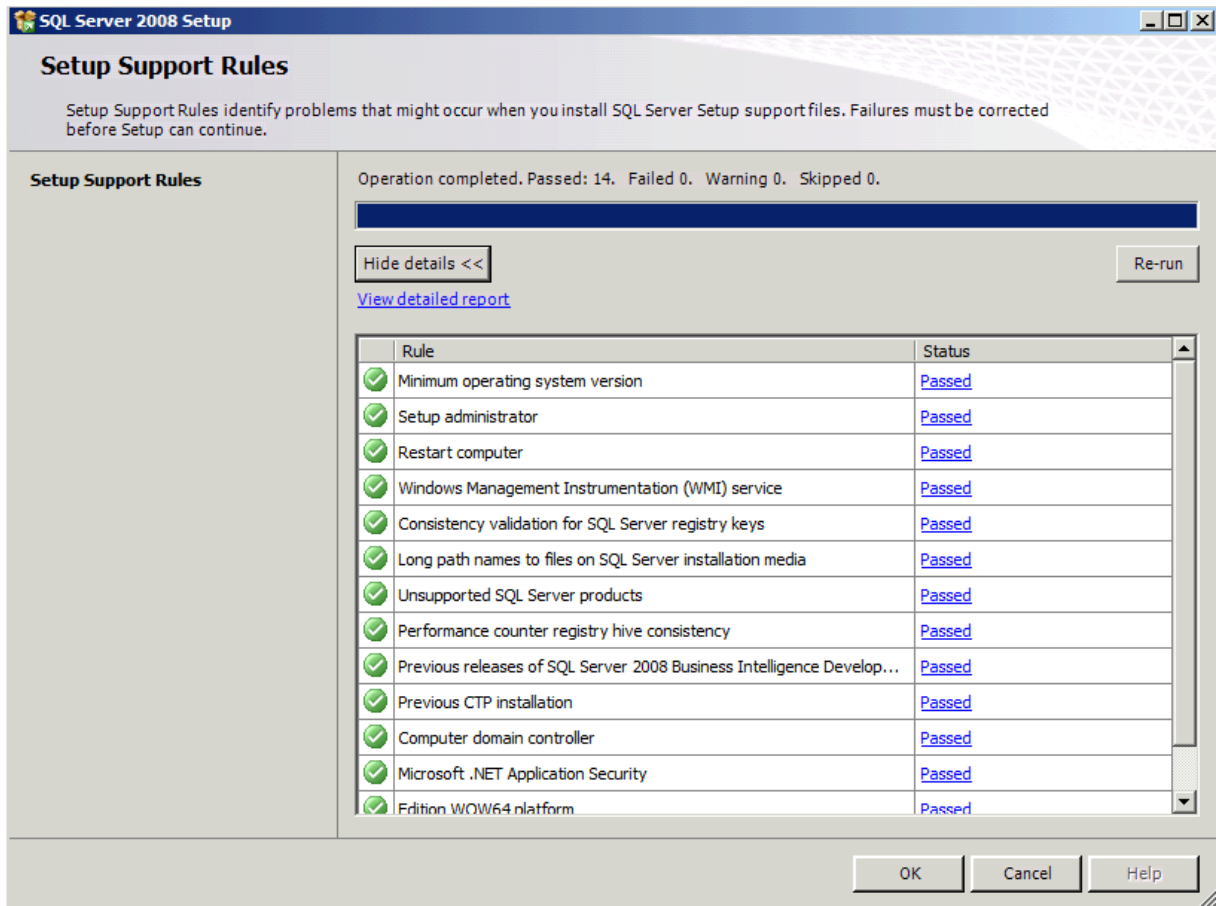


Server Neustart

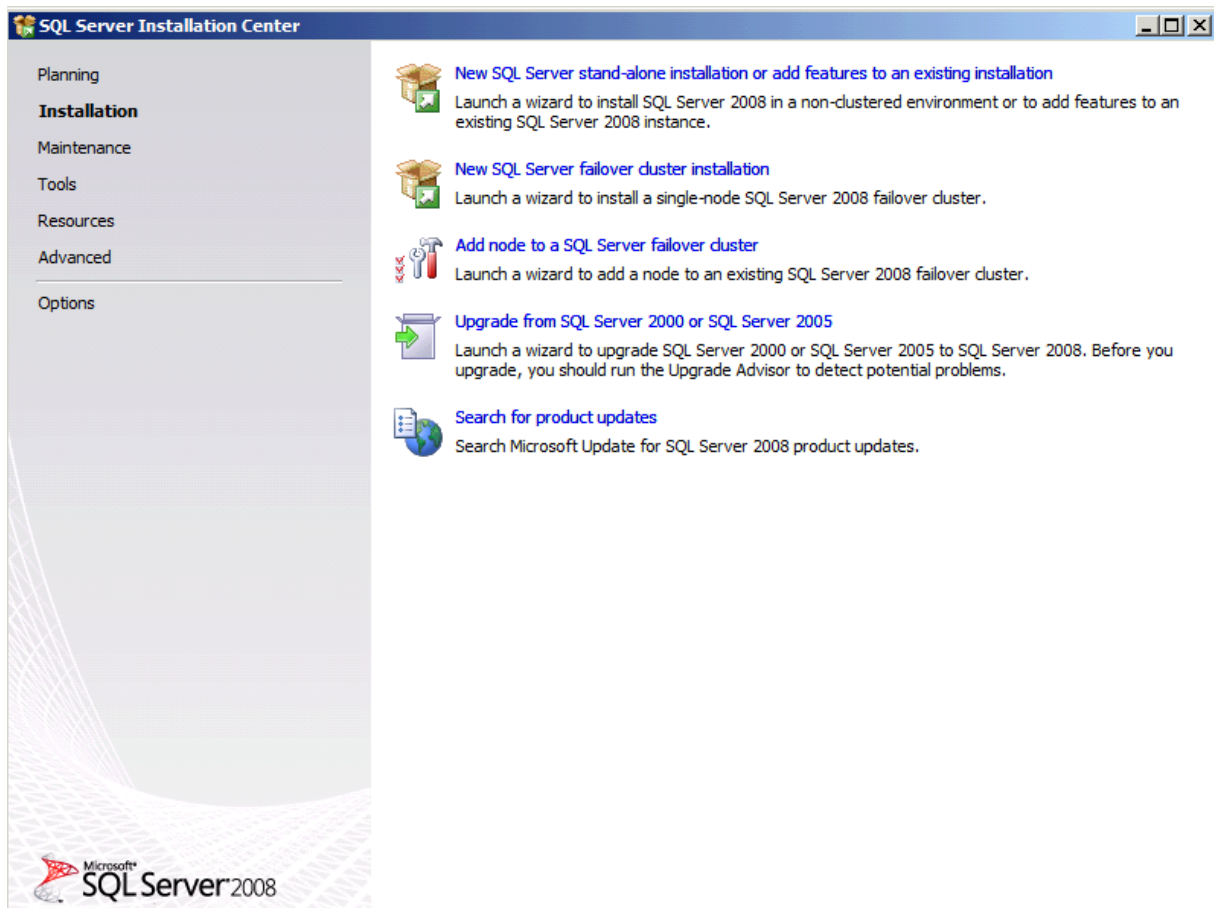
SQL Installation



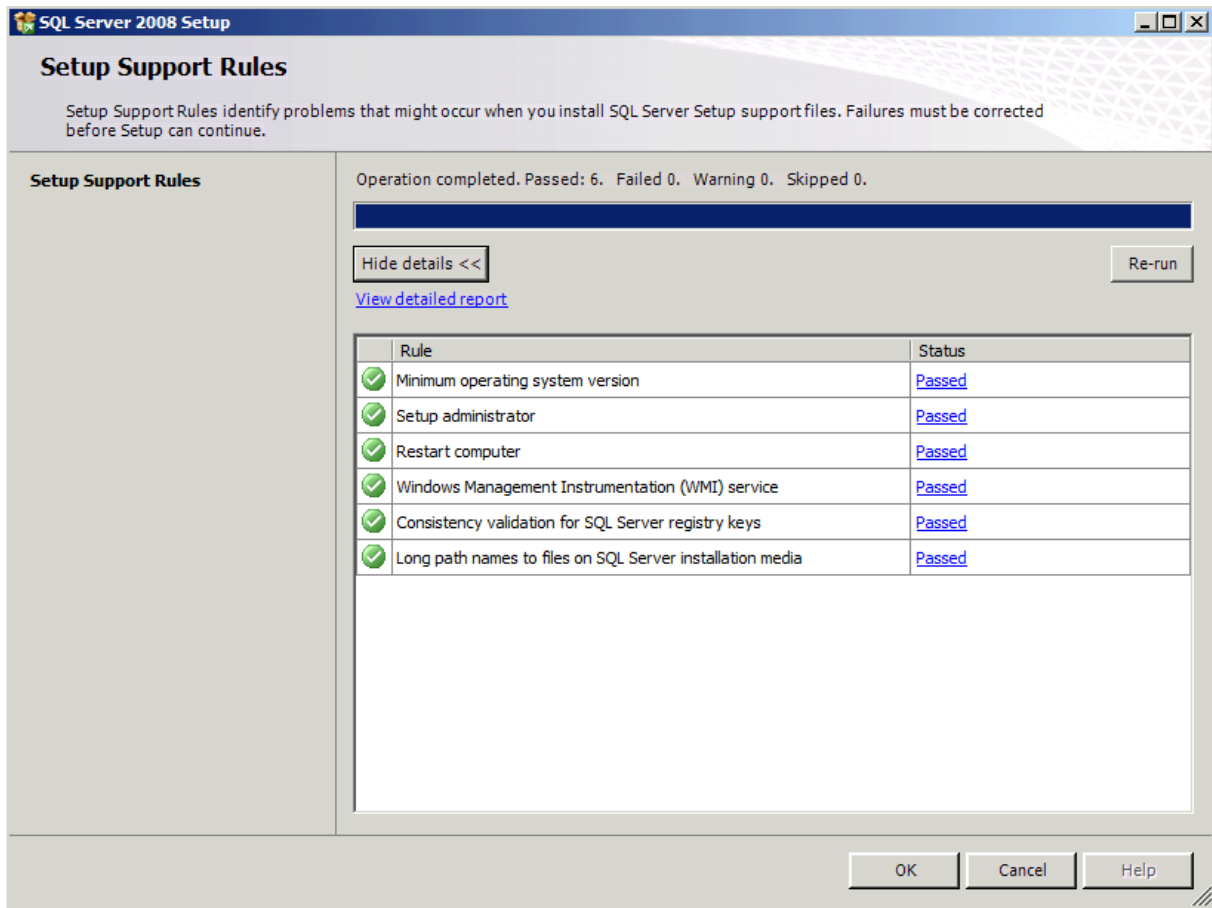
Pre Check



Failover Cluster Installation



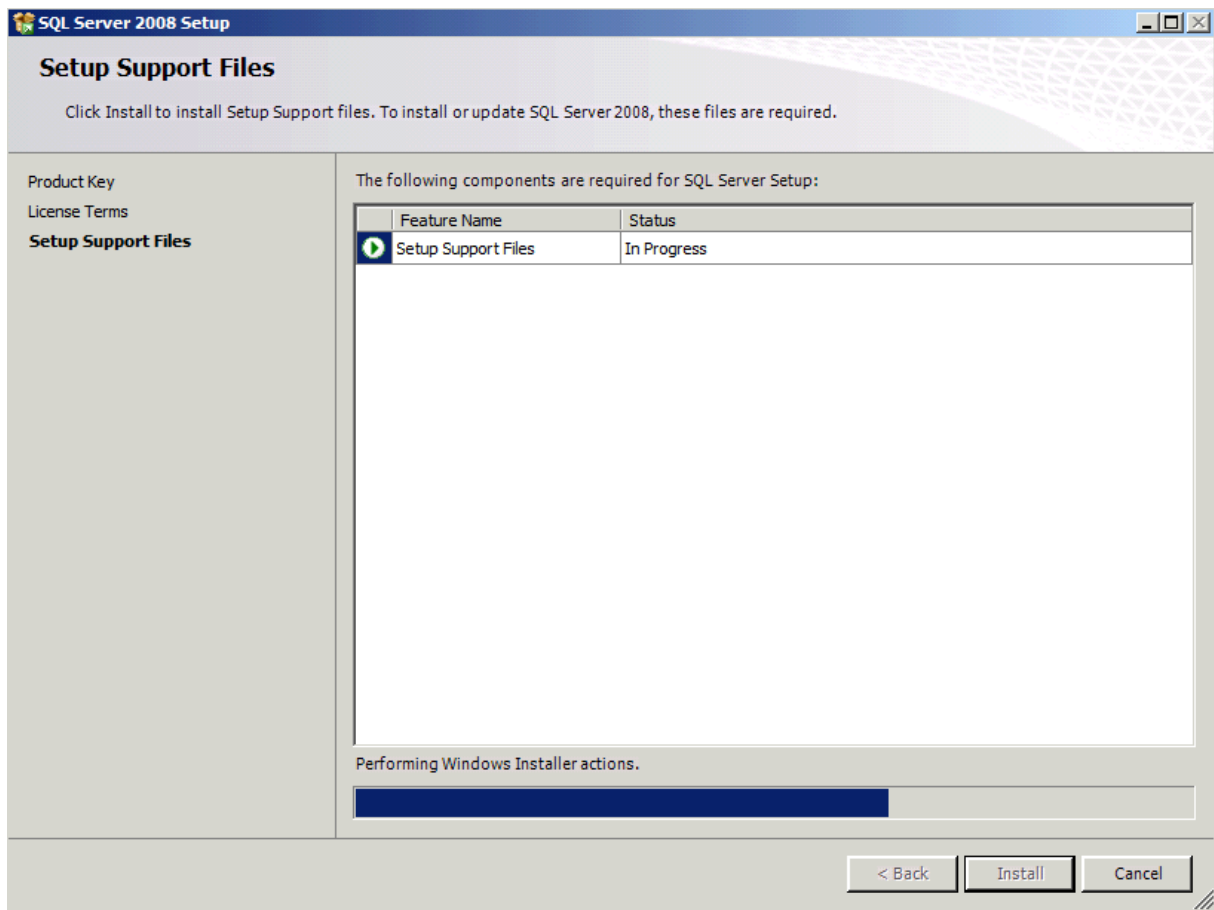
Alles roger!



Product Key / Version angeben

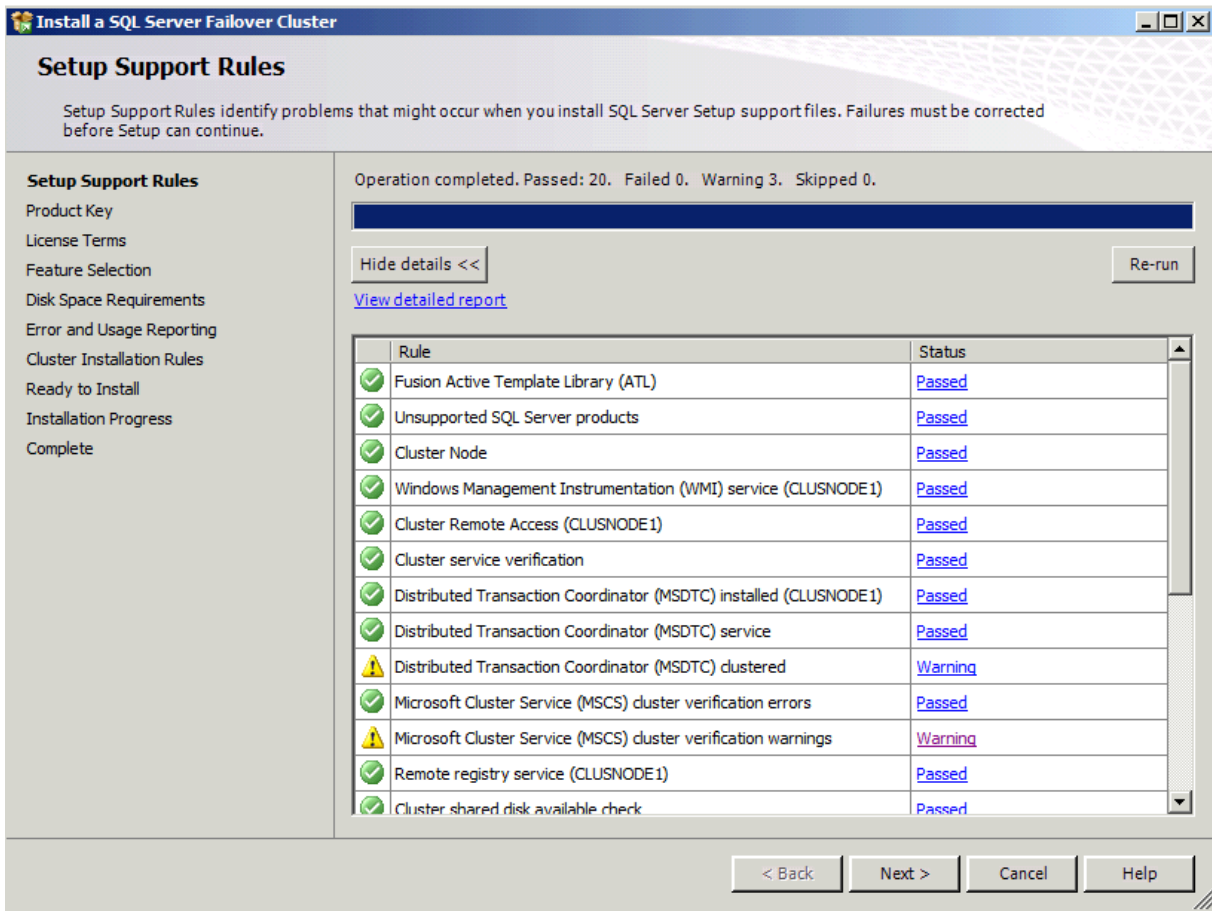
Lizenzvertrag lesen

Setup Support Files

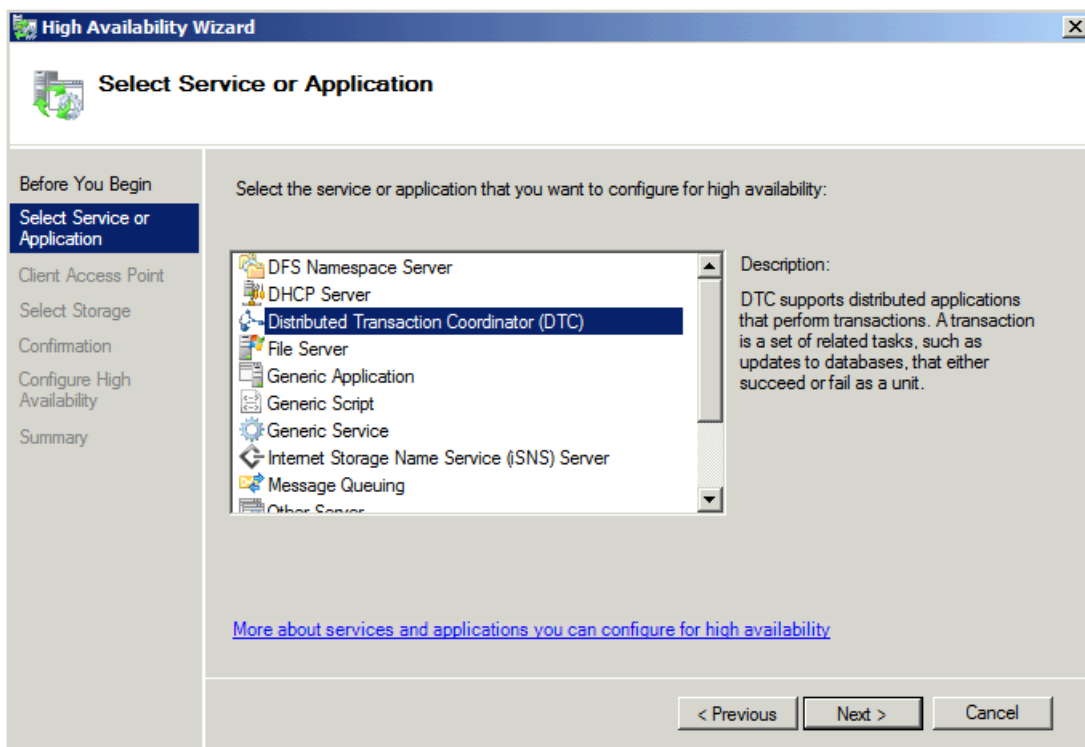


Alles roger?

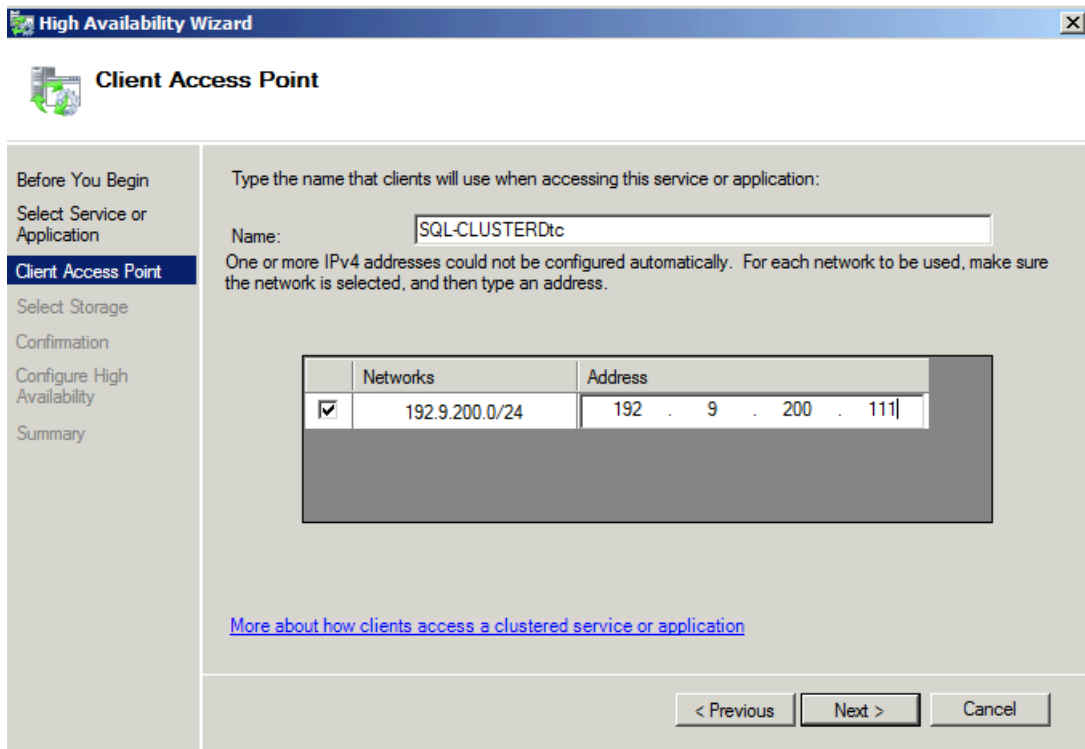
MS DTC wird nicht fuer alle SQL Szenarien benoetigt. Siehe KB Artikel und SQL Doku.



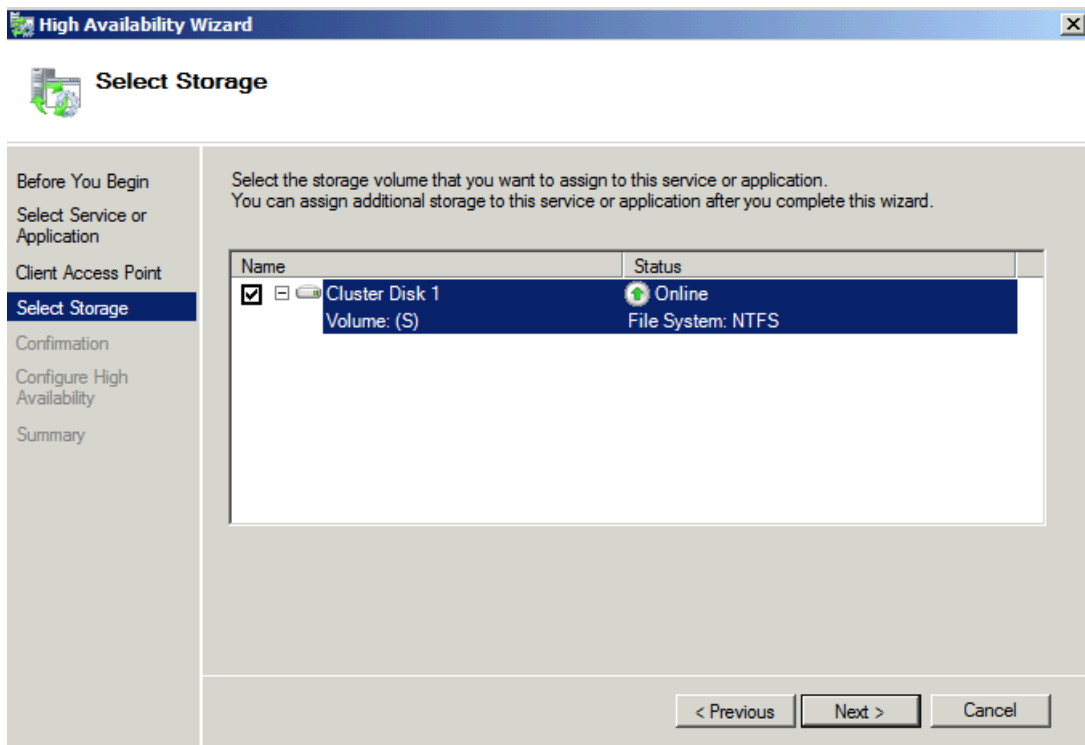
DTC als Ressource auswahlen



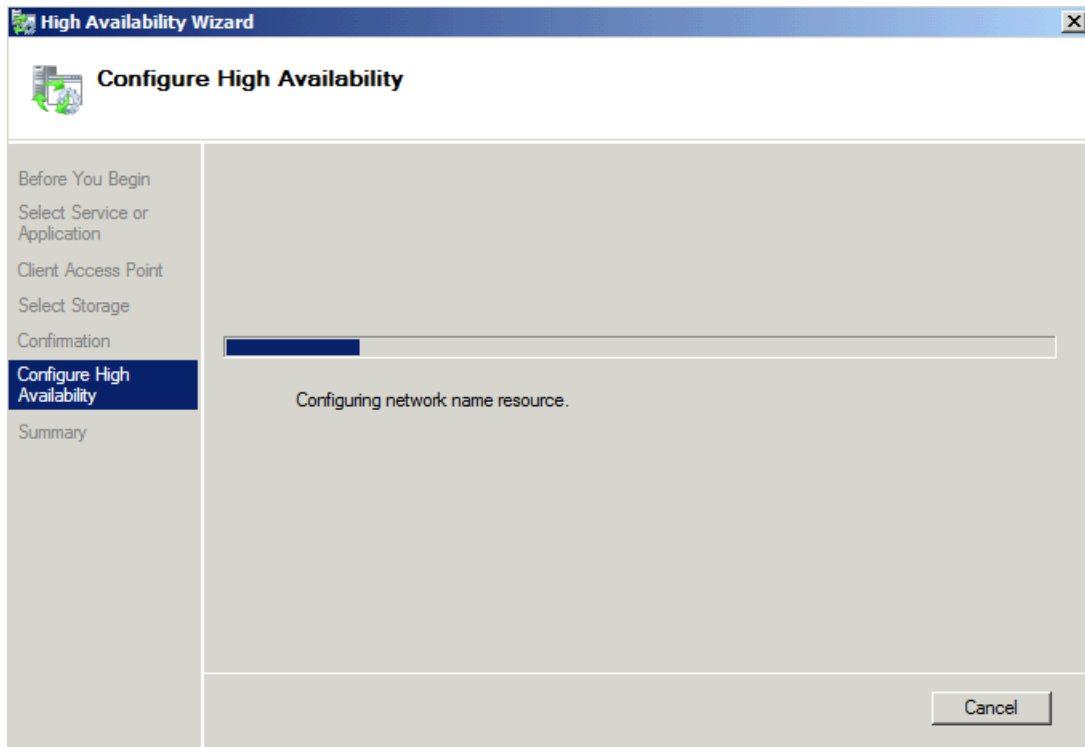
IP Adresse vergeben



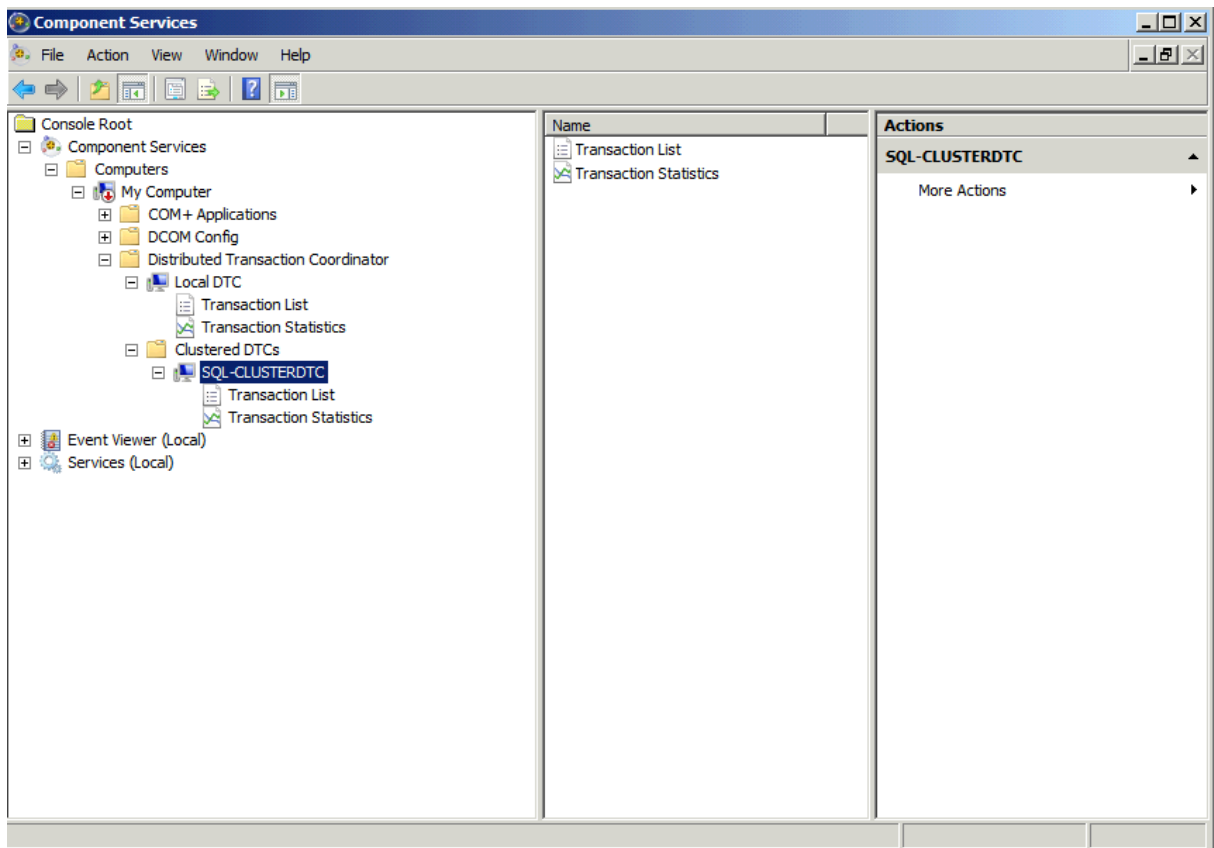
Platte fuer MS DTC Daten auswaehlen



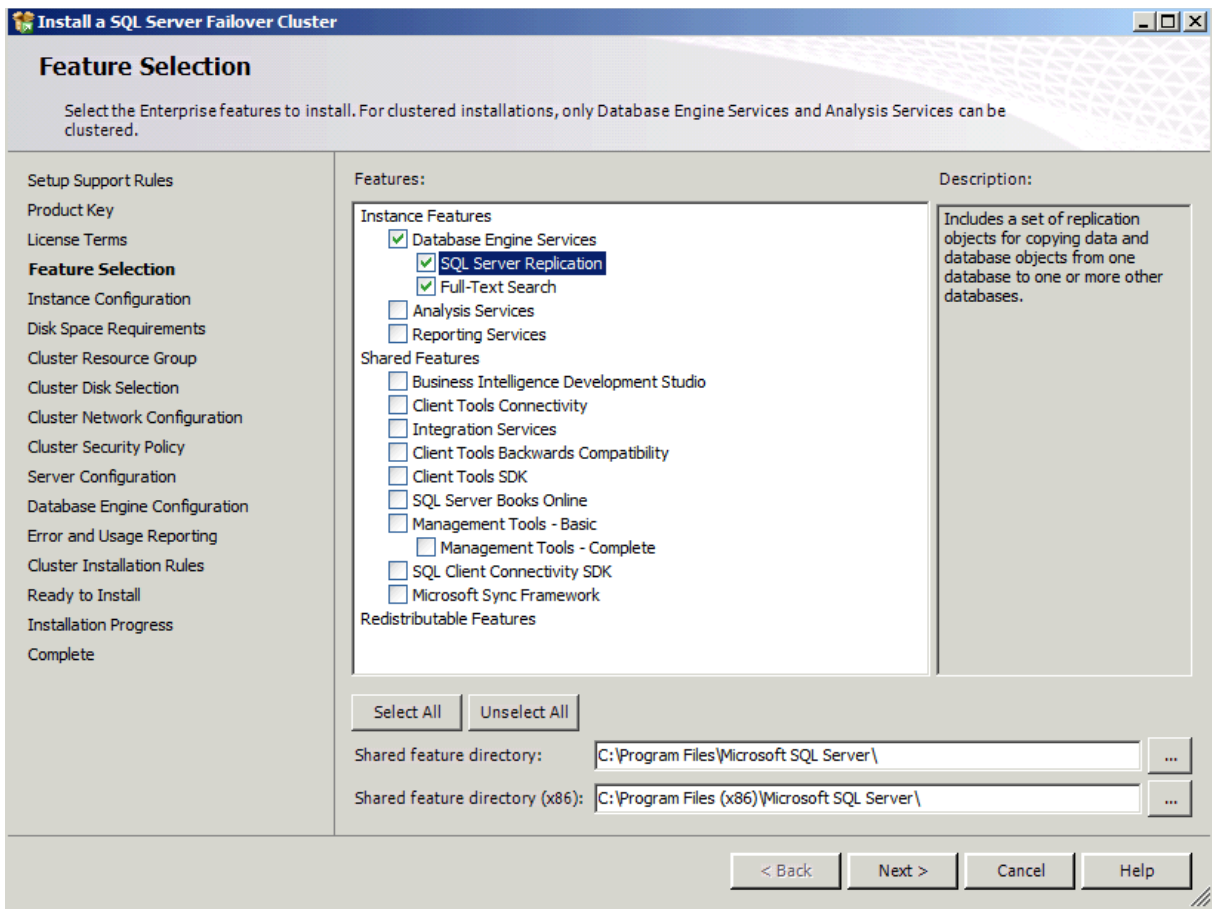
Konfiguration



Clustered MS DTC Eigenschaften



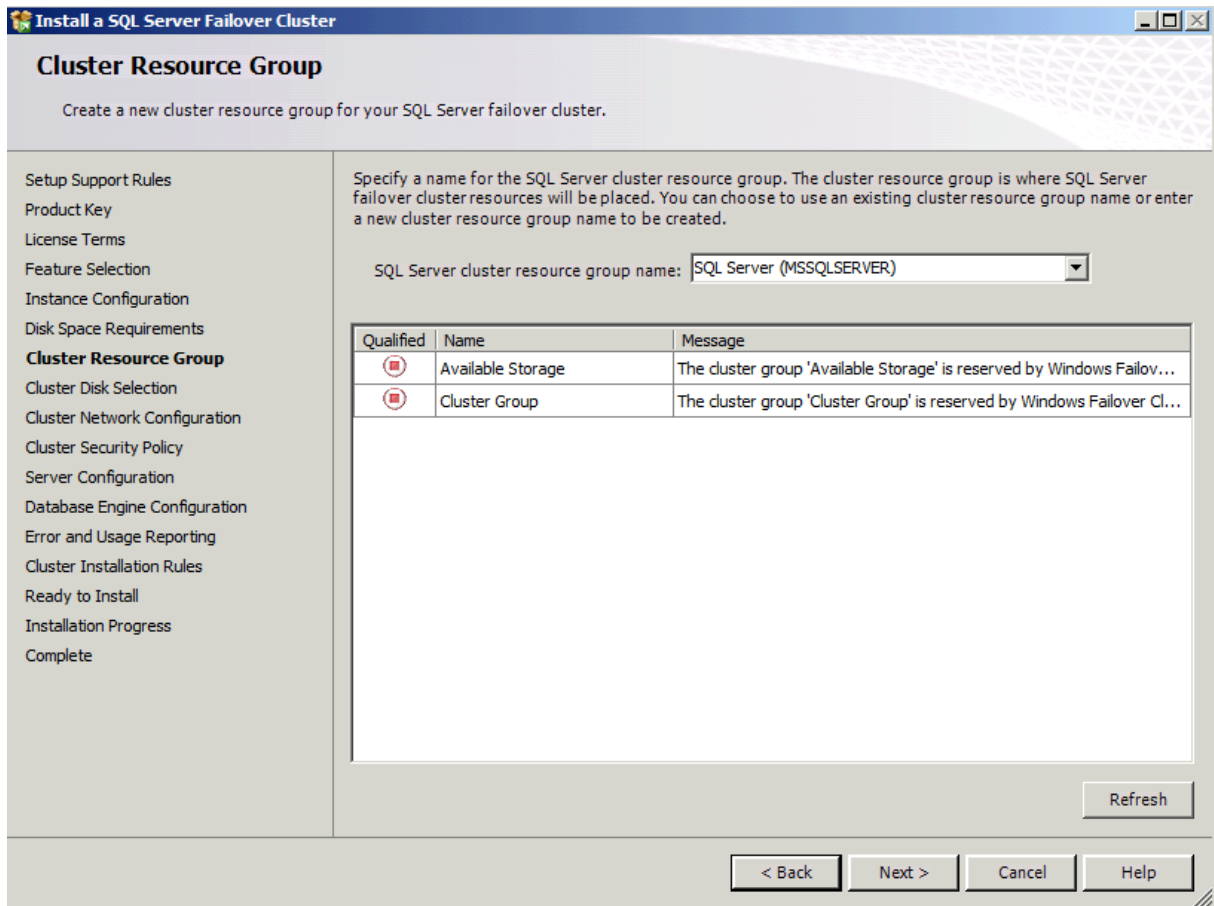
Auswahl der zu installierenden Funktionen



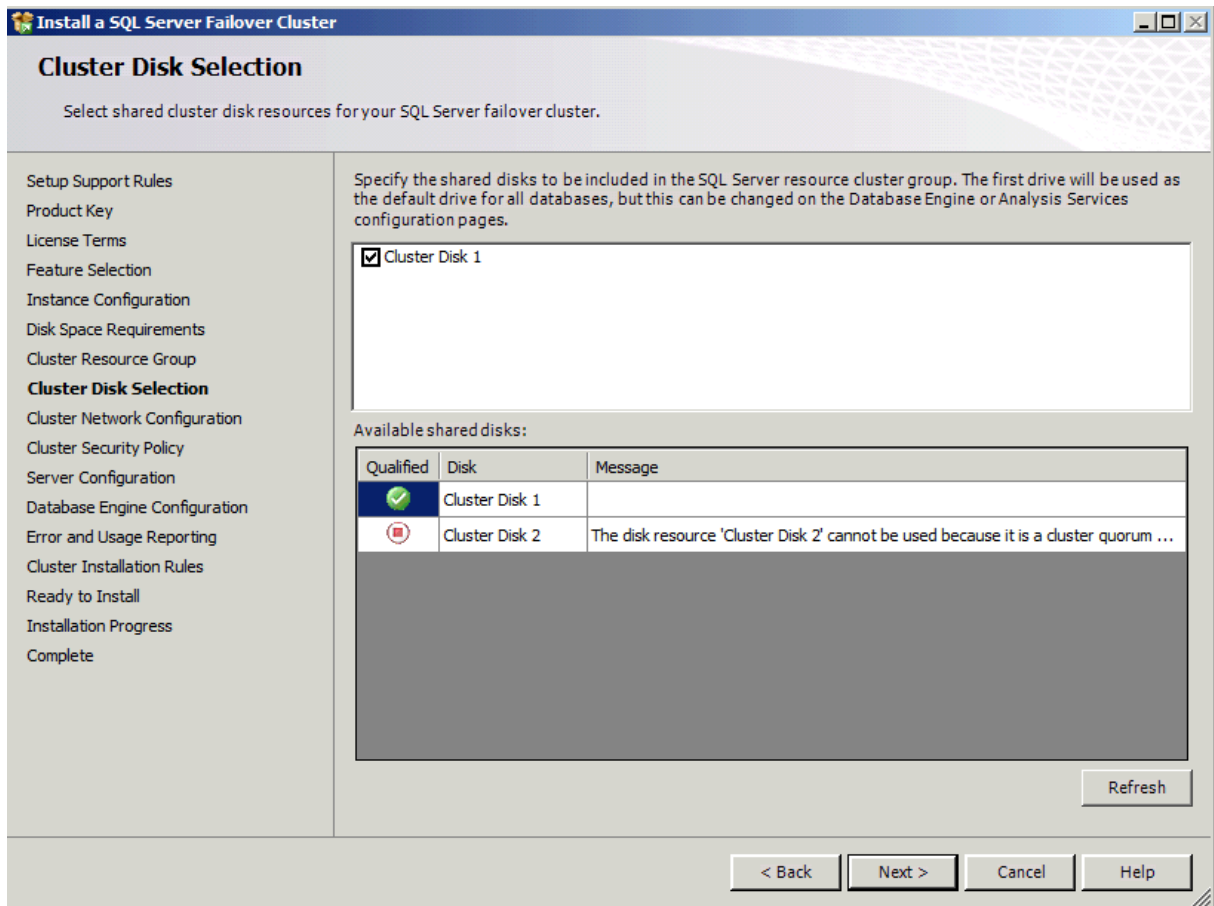
SQL Network Name

Disk Space

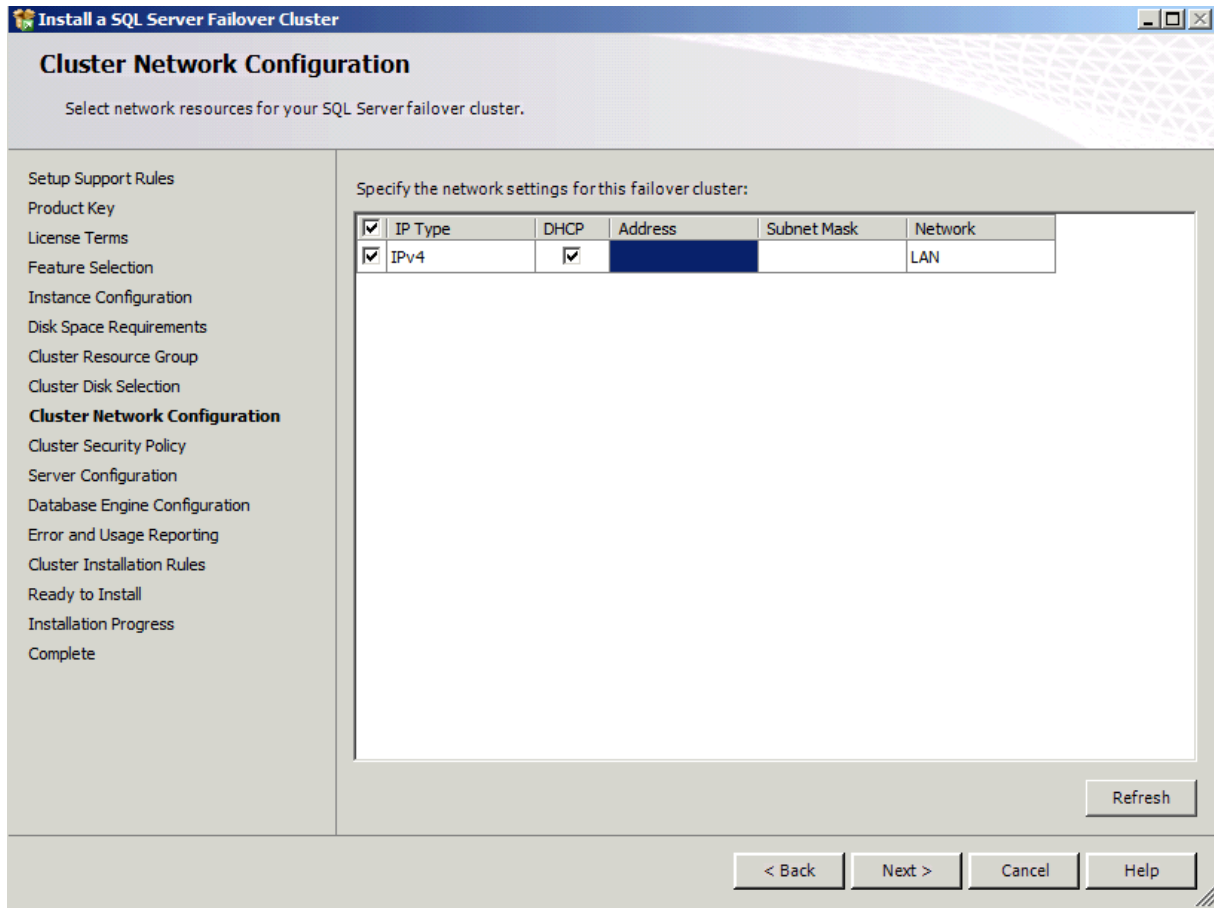
Neue Cluster Gruppe



Cluster Disk auswählen

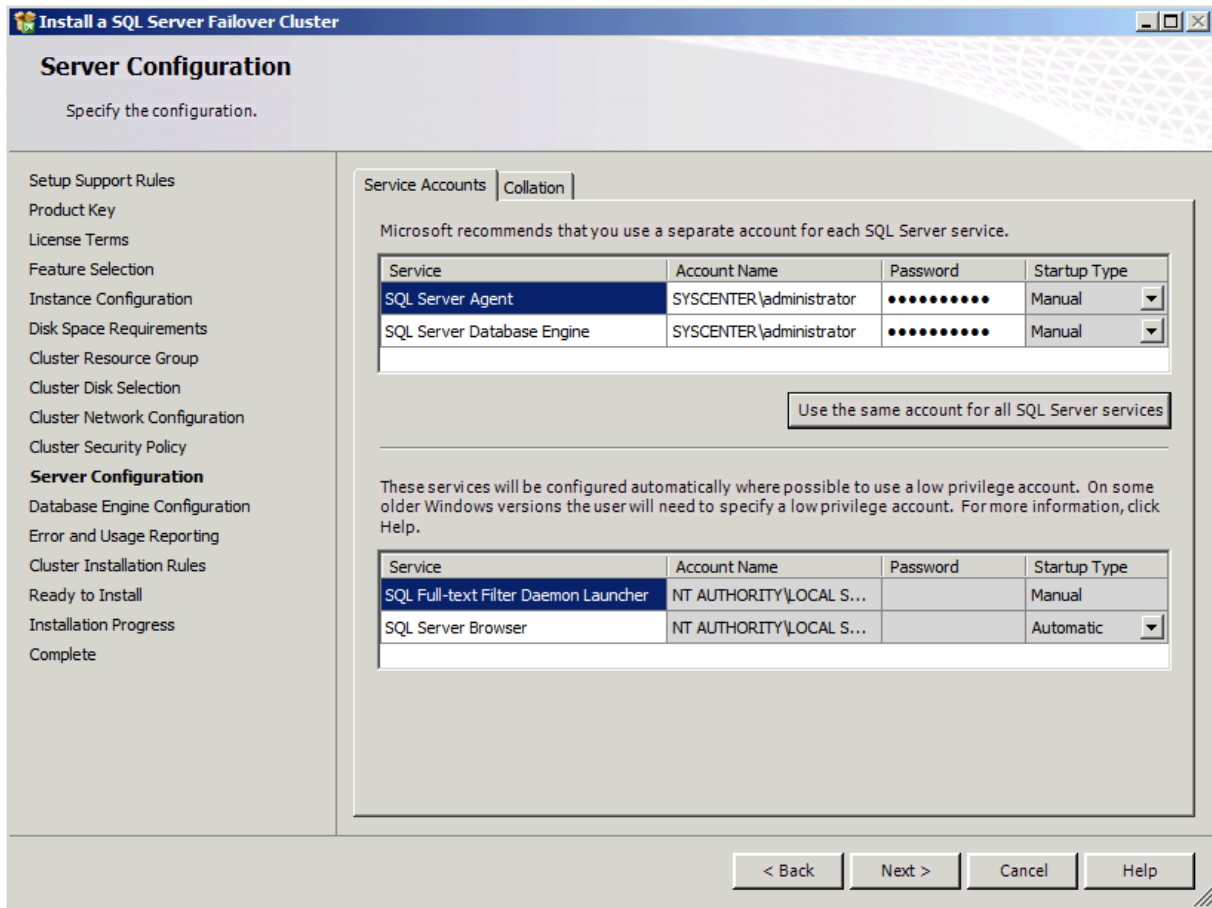


Cluster Netzwerk auswählen

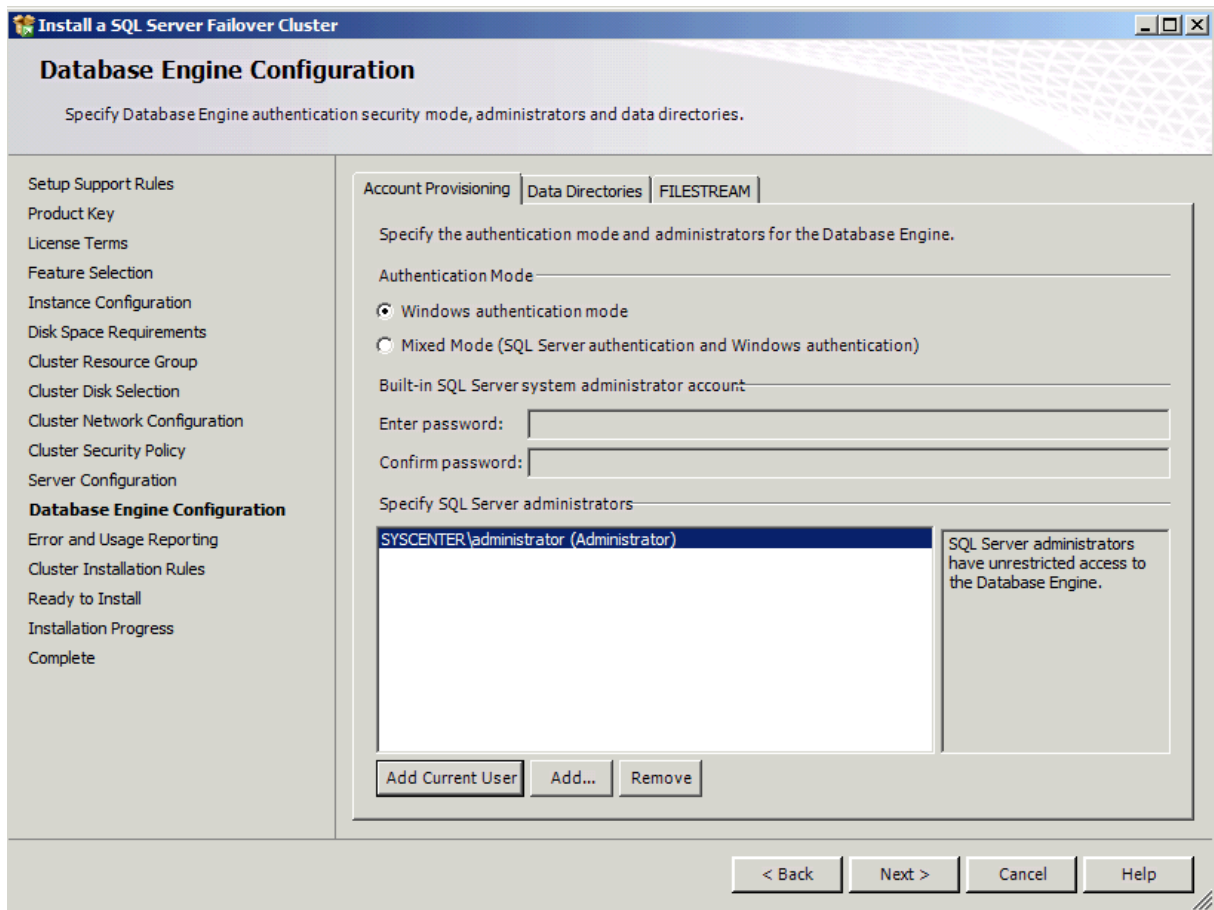


Use Service SID

Best Practice ist ja eigentlich einen separaten User a la SQLADMIN zu nehmen. In meinem Lab verzichte ich da mal drauf.



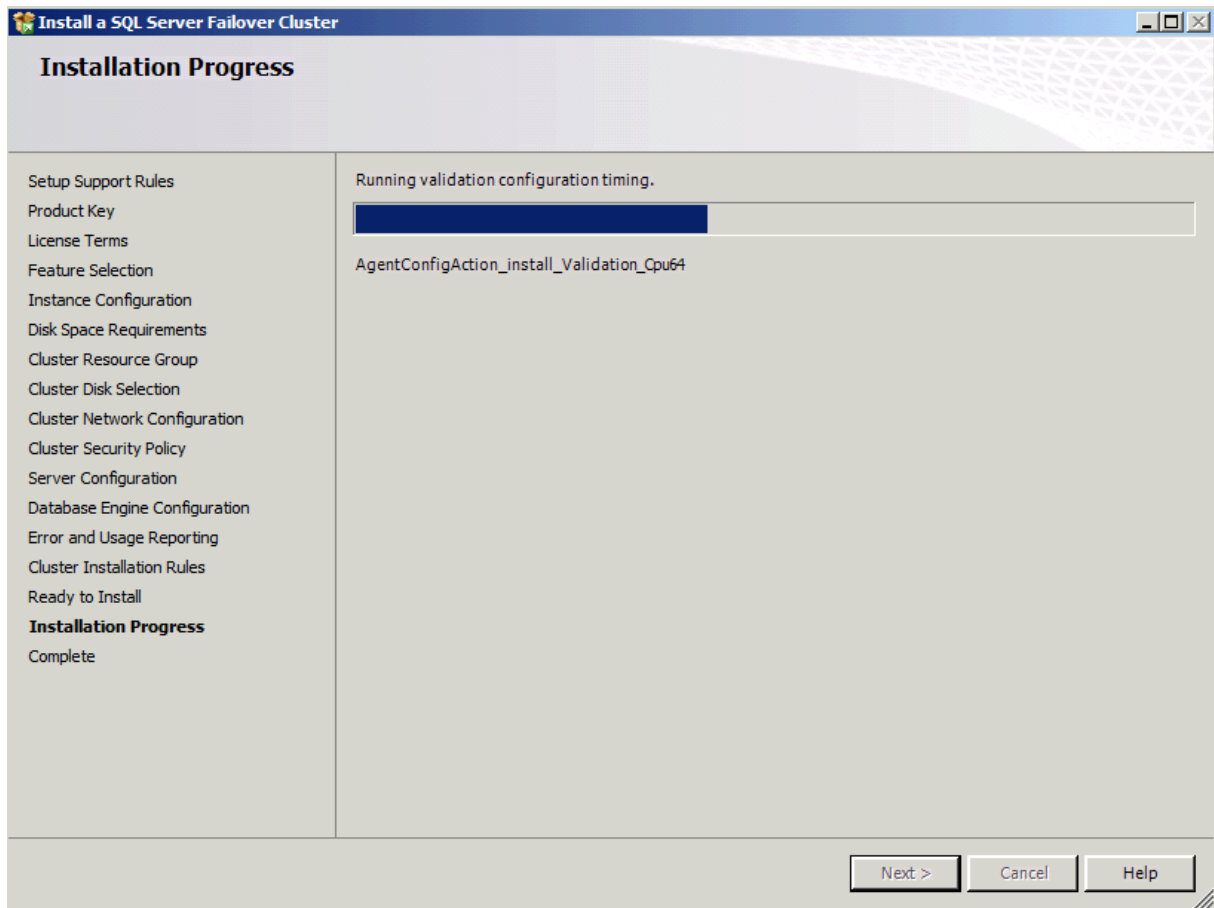
Authentifizierungsmethode auswaehlen



Specify Error and Usage Reporting

Installation summary

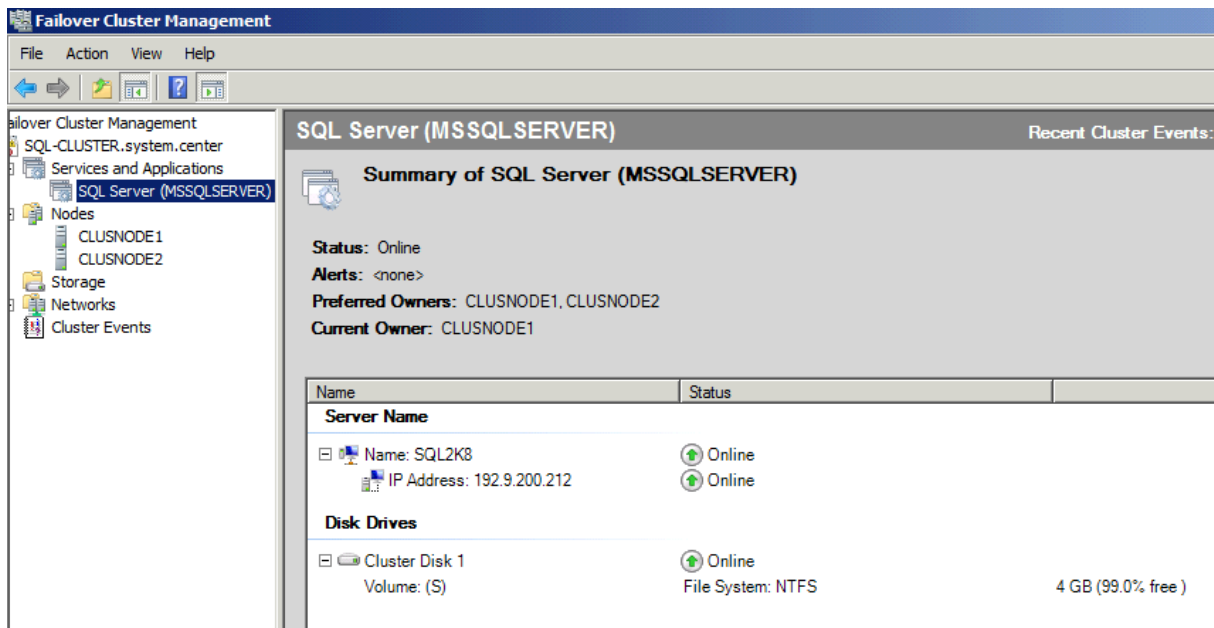
Installation



Installation auf dem zweiten Knoten

Geht rasend schnell.

Failover Cluster Verwaltung



Failover testen

The screenshot shows the Failover Cluster Management console. The left-hand tree view is expanded to show the 'SQL Server (MSSQLSERVER)' resource. The main pane displays the 'Summary of SQL Server (MSSQLSERVER)' with the following details:

- Status:** Pending
- Alerts:** <none>
- Preferred Owners:** CLUSNODE1, CLUSNODE2
- Current Owner:** CLUSNODE2

Name	Status
Server Name	
Name: SQL2K8	Offline
IP Address: 192.9.200.212	Offline
Disk Drives	
Cluster Disk 1	Offline Pending

Fertig