

Test SecureGuard 120 Appliance mit ISA Server 2006 Enterprise

System:

SecureGUARD 120 Appliance
ISA Server 2006 Enterprise
Windows Server 2003 R2

Intel Mobile 64 Bit CPU
2 GB RAM
1 x SATA HDD 24x7
3x 10/100/1000 NIC

Bilder vor der Installation

Auspacken ist wie Weihnachten :-)



Von Vorne



... und von Hinten

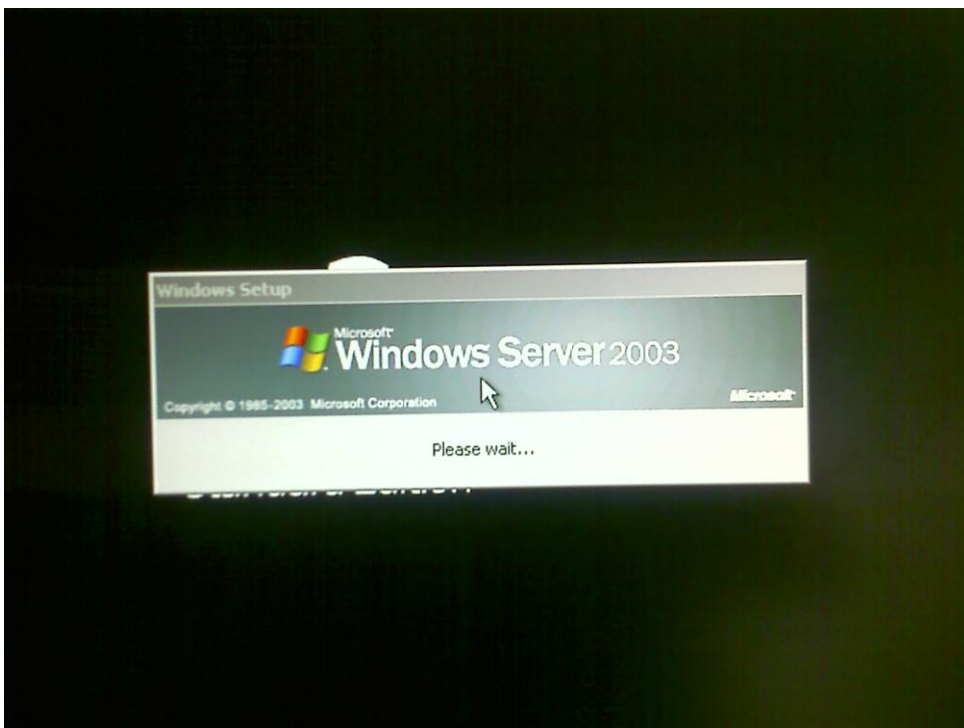


Display

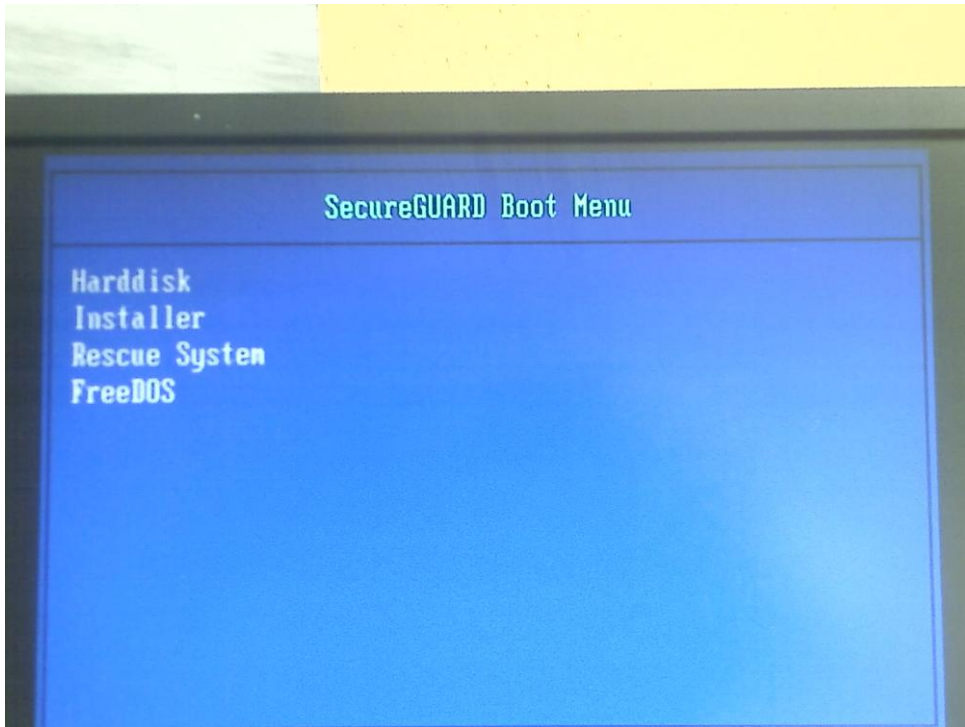


Bilder waehrend der Installation

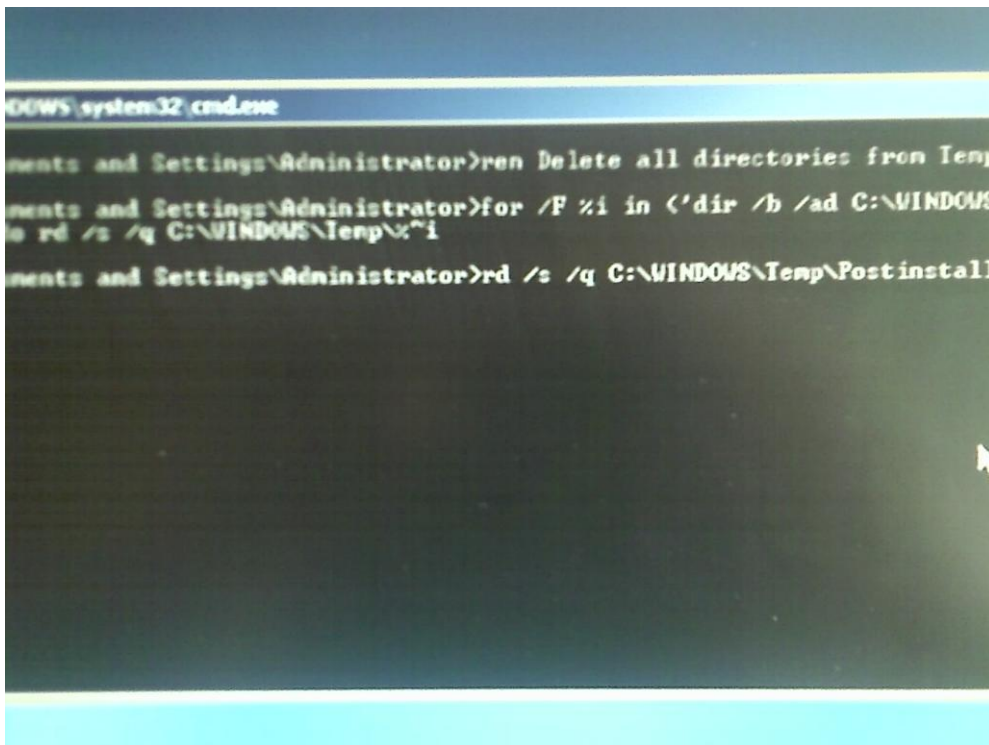
Die Installation ist vollautomatisiert



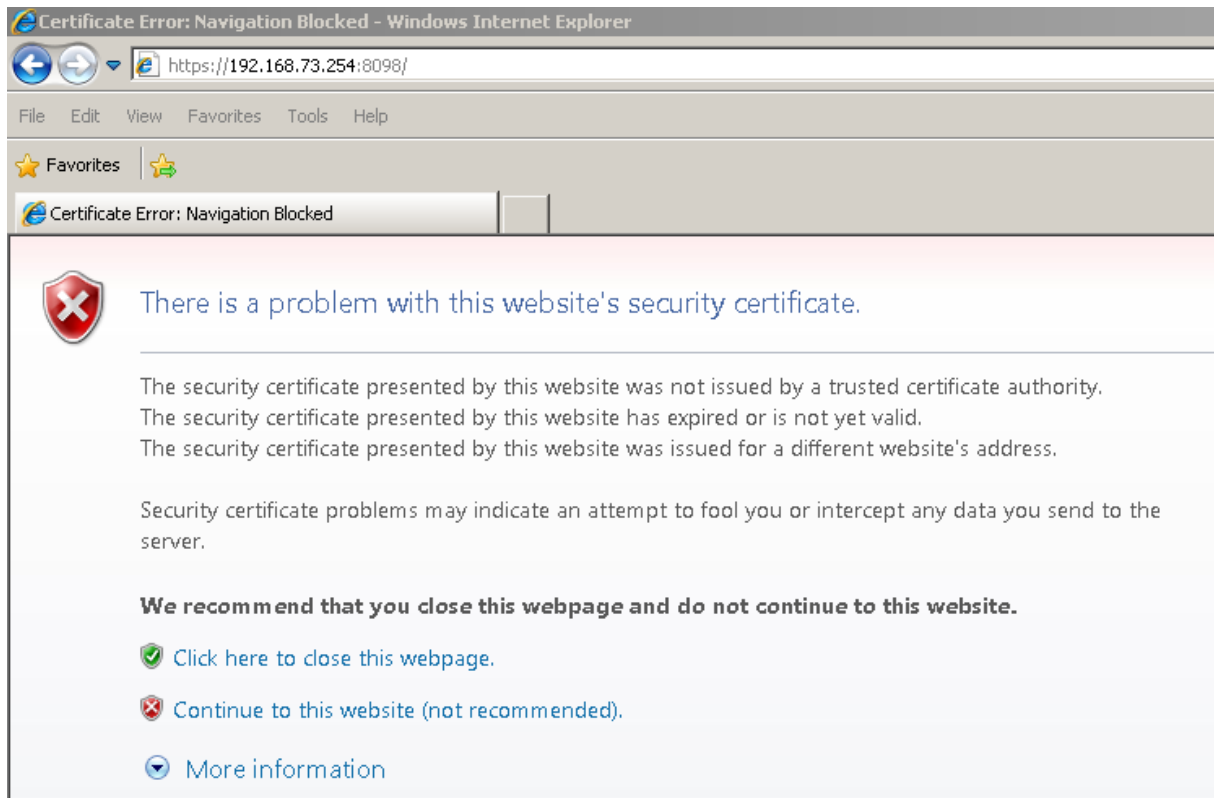
Bootmenue



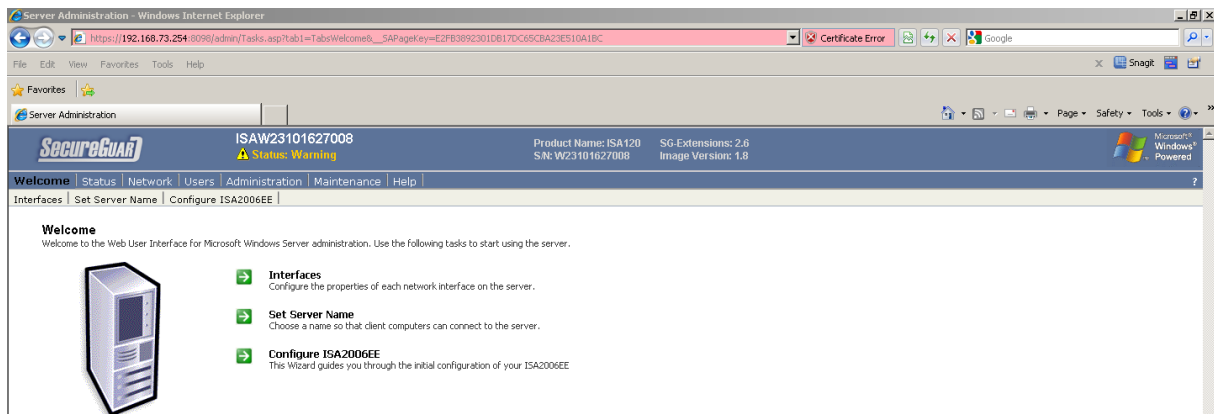
Scripte / Scripte ...



Webinterface



fast alles lässt sich per Webinterface konfigurieren



Na, da muss Marc nochmal ran und das System fertigstellen

Server Administration - Windows Internet Explorer

https://192.168.73.254:8098/admin/statuspage.asp?Tab1=TabsStatus&__SAPageKey=E2FB3892301DB17DC65CBA23E510A1B...

File Edit View Favorites Tools Help

★ Favorites ☆

Server Administration

SecureGUARD ISAW23101627008 Product Name: IS
 ⚠ Status: Warning S/N: W23101627

Welcome | **Status** | Network | Users | Administration | Maintenance | Help

System Information

Alerts

- ⚠ [Install new certificate](#)
- ⚠ [Change Password](#)
- ⚠ [Harden System Policy](#)
- ℹ [Install Addons](#)

Noch nutzt die Appliance wenig RAM

System Resources: - Windows Internet Explorer

https://192.168.73.254:8098/admin/util/resources.asp?Tab1=TabsAdministration&Tab...

File Edit View Favorites Tools Help

★ Favorites ☆

System Resources:

SecureGUARD ISAW23101627008
 ⚠ Status: Warning

Welcome | Status | Network | Users | **Administration** | Maintenance | Help

File Upload | ISA Management Console | **Resources** | Sniffer | Remote Desktop | Hard

System Resources:

Committed Memory Total: 292788 (Kb)
 Committed Memory Limit: 4038384 (Kb)

Memory usage: 7,25 (%)
 Processor usage: Calculating for 1 minute...

Server has been running: 16 minute(s)

Cool, Backup

Backup - Windows Internet Explorer

https://192.168.73.254:8098/admin/sh_taskframes.asp?Title=Backup&URL=util/backup.asp?Tab1=TabsMaintenance%26Tab2=Tab

File Edit View Favorites Tools Help

Backup

SecureGUARD ISAW23101627008 **Status: Warning** Product Name: ISA S.N: W23101627008

Welcome | Status | Network | Users | Administration | **Maintenance** | Help

Date/Time | Shutdown | Logs | Addons | **Backup** | Restore | Updates | Alert E-Mail | Language

Backup and Restore

Backup-System:

- NTBackup
- DriveSnapshot

Backup-Type:

- Back up the system immediately (full backup)
- Add a scheduled backup task: Start at : a backup

Select storage location:

Alles im Ueberblick

Server Administration - Windows Internet Explorer

https://192.168.73.254:8098/admin/tasks.asp?tab1=TabsMaintenance&__SAPageKey=A6469CC18413C22D095FF1CAB063D50C

File Edit View Favorites Tools Help

Server Administration


SecureGUARD ISAW23101627008 **Status: Warning** Product Name: ISA120 S.N: W23101627008 SG-Extensions: 2.6 Image Version: 1.8

Welcome | Status | Network | Users | Administration | **Maintenance** | Help

Date/Time | Shutdown | Logs | Addons | Backup | Restore | Updates | Alert E-Mail | Language

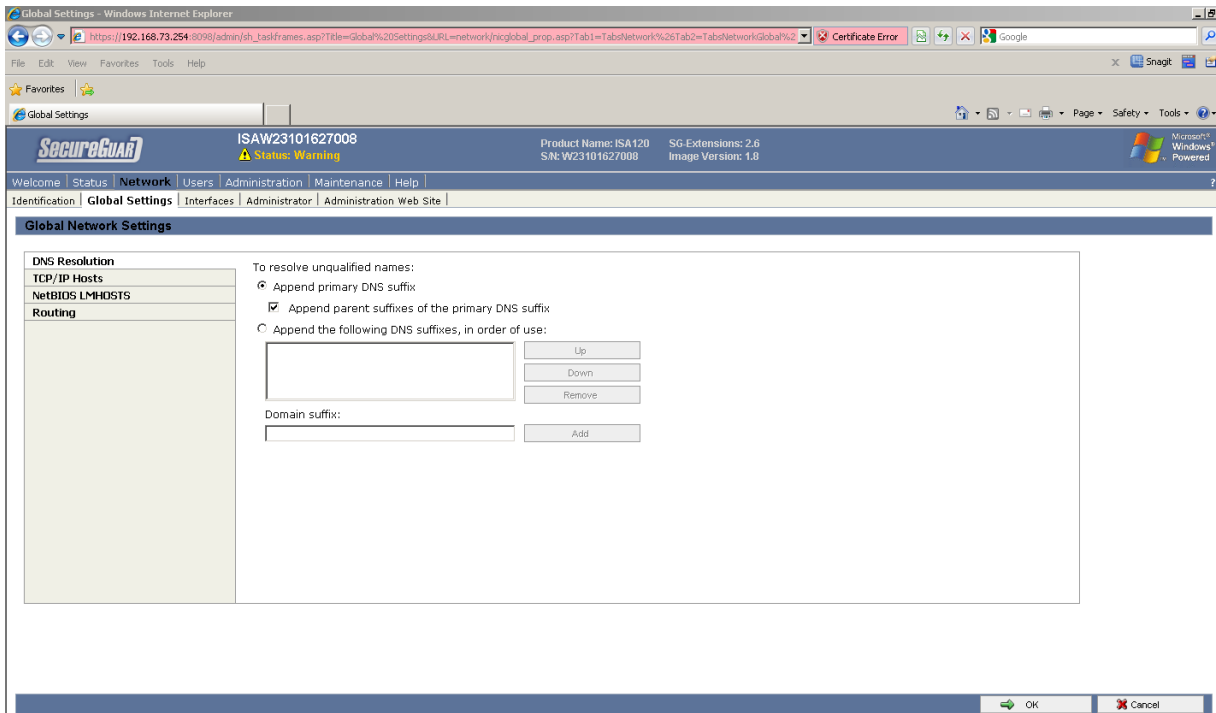
Maintenance

These tools provide essential configuration and maintenance services.

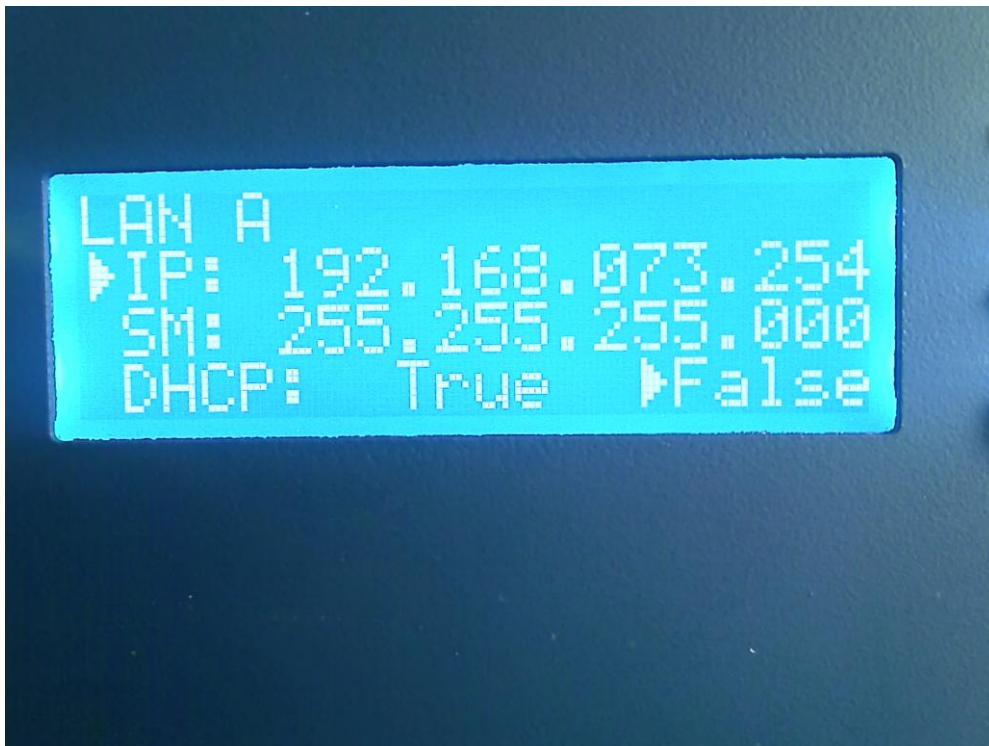


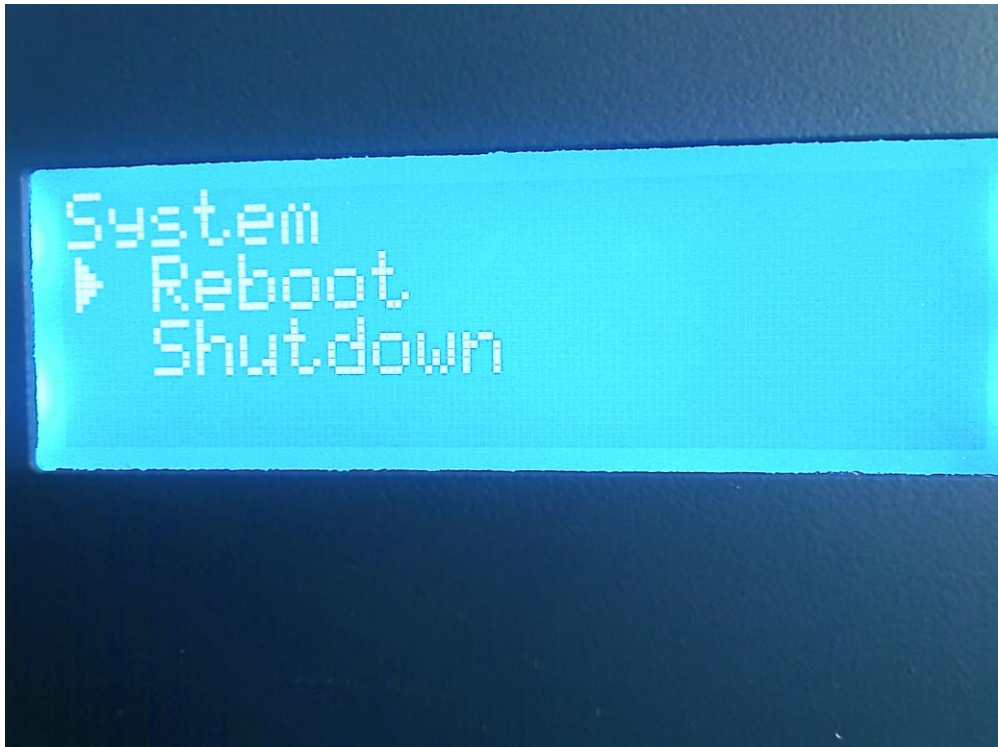
- Date/Time**
Set the date and time on the server.
- Logs**
View, clear, download, and configure logs.
- Backup**
Unattended backup the server operating system.
- Updates**
Update Packages and Software on the Server
- Language**
Change the language used by the server.

- Shutdown**
Shut down or restart the server immediately or at a scheduled time.
- Addons**
Installation of additional Packages.
- Restore**
Restore the server operating system.
- Alert E-Mail**
Set alert e-mail on the server.

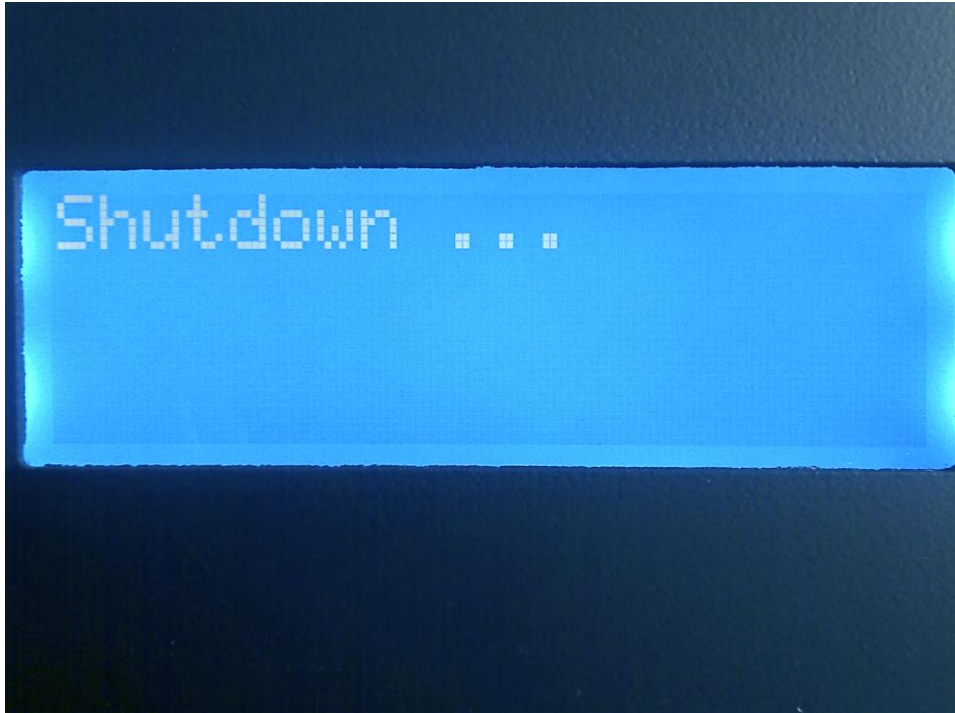


Display-Menue-Konfiguration





So, Feierabend fuer heute



Mein persoenliches Fazit:

PRO:

- Sehr einfache Inbetriebnahme und Installation
- Relativ kleines Gehaeuse und schoen blau
- Uebersichliches LED Display
ISA 2006 STD, ENT und IAG 2007 verfuegbar als Appliance
- Webinterface
- Umfangreiche Dokumentationen und CDs im Lieferumfang
- 64 Bit und somit geruestet fuer TMG
- Nette und kompetente Mitarbeiter

CONTRA:

- LED Tasten etwas "labberig", was aber die Funktion nicht beeintraechtigt
- Relativ lauter Luefter. Da Lutz mich im Vorfeld informiert hat kein Problem, zumal SecureGuard an einer luefterlosen Appliance arbeitet, welche bald verfuegbar sein soll

Gesamturteil ist 2+. Fuer kleine und mittlere Netzwerke ist diese Appliance ideal, fuer Enterprise Umgebungen bietet SecureGUARD entsprechend andere Loesungen.