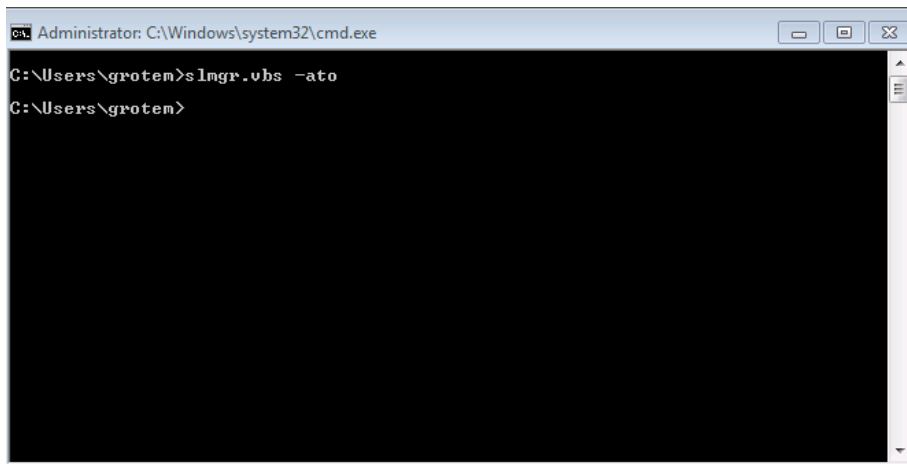
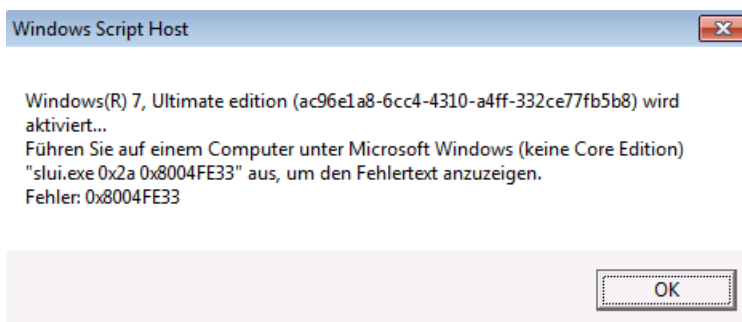


## Windows 7 Produkt Aktivierungsprobleme mit KMS

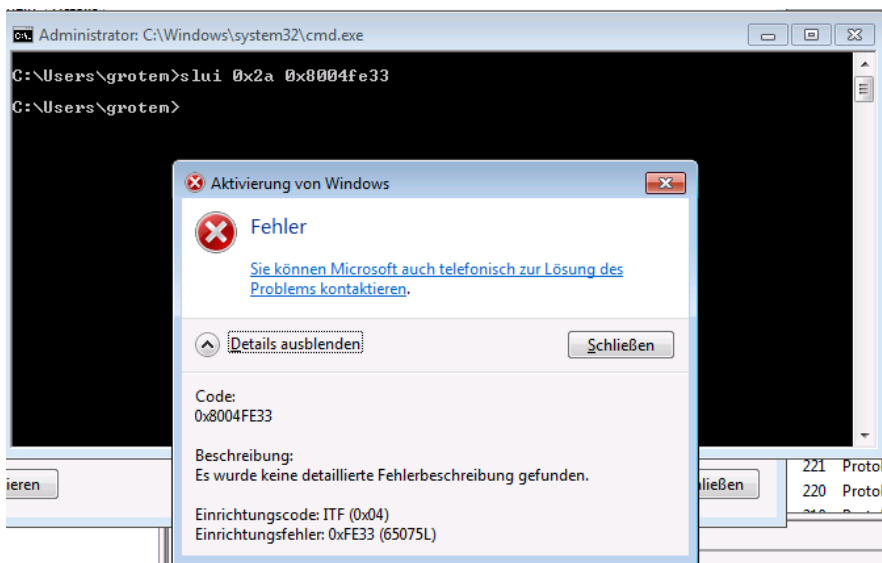
Client nach Aufnahme in die Domaene am KMS aktivieren



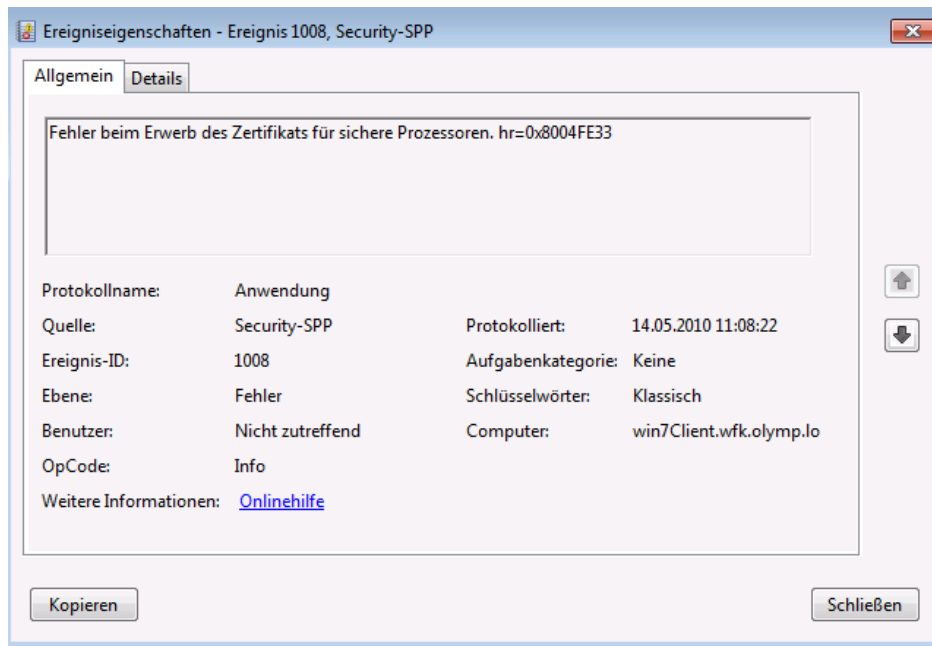
### Fehlermeldung



### Detailinformationen



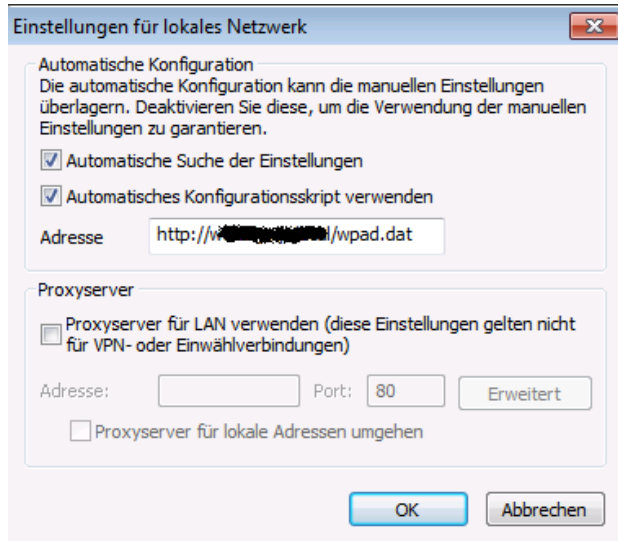
## Was sagt die Ereignisanzeige



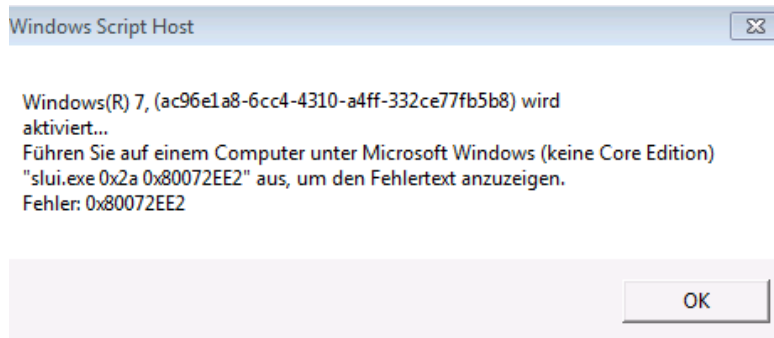
Hmm, KB921471 hat mehr Infos:

<http://support.microsoft.com/kb/921471/en-us>

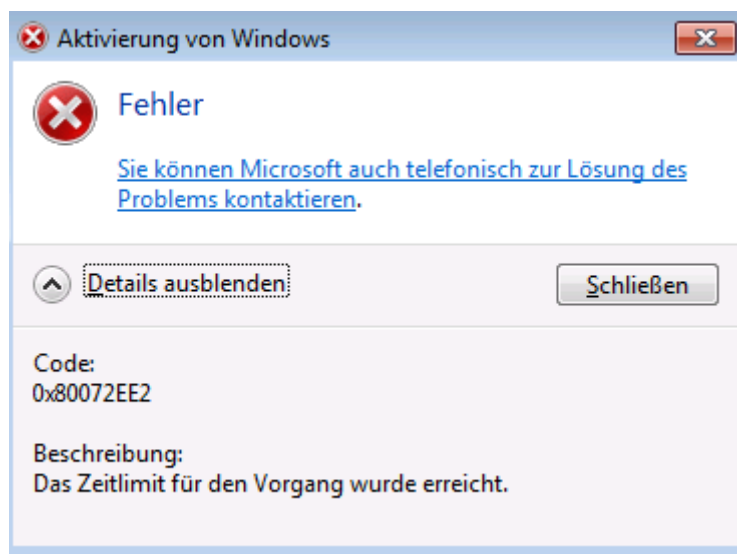
Am Proxy liegt's?



Danach kam dann die Meldung:

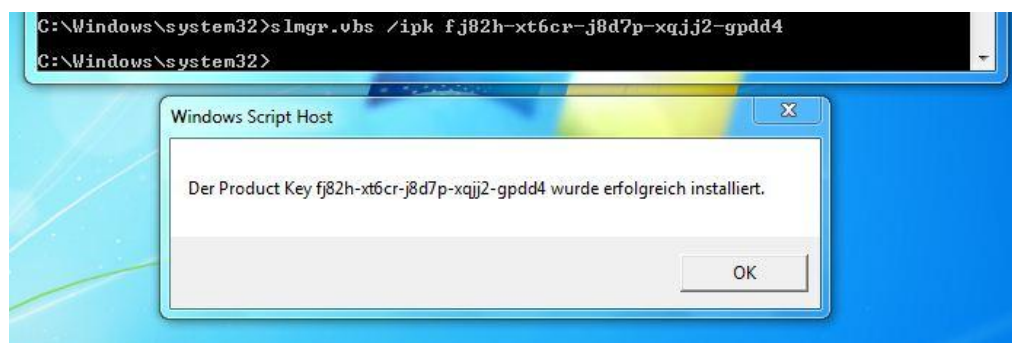


Im Detail:

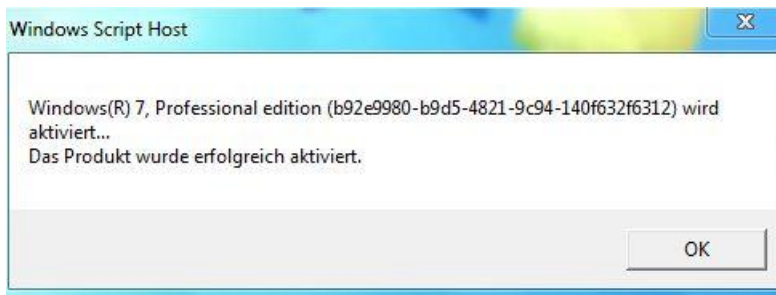


Hmm....

Stimmt, man muss doch den MAK erstmal in den Initial KMS Key wandeln



Dann funktioniert es auch mit dem KMS



.. oder? ... Ja!

