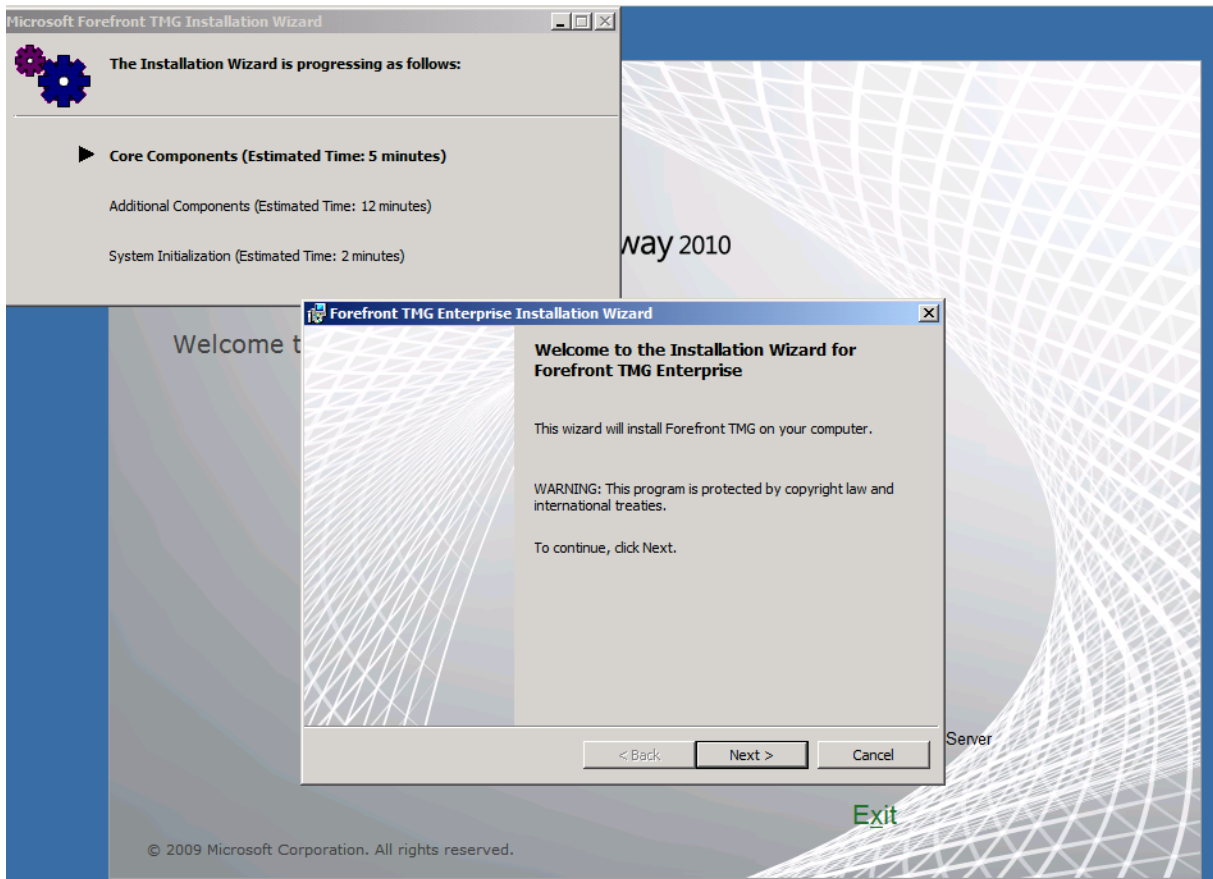


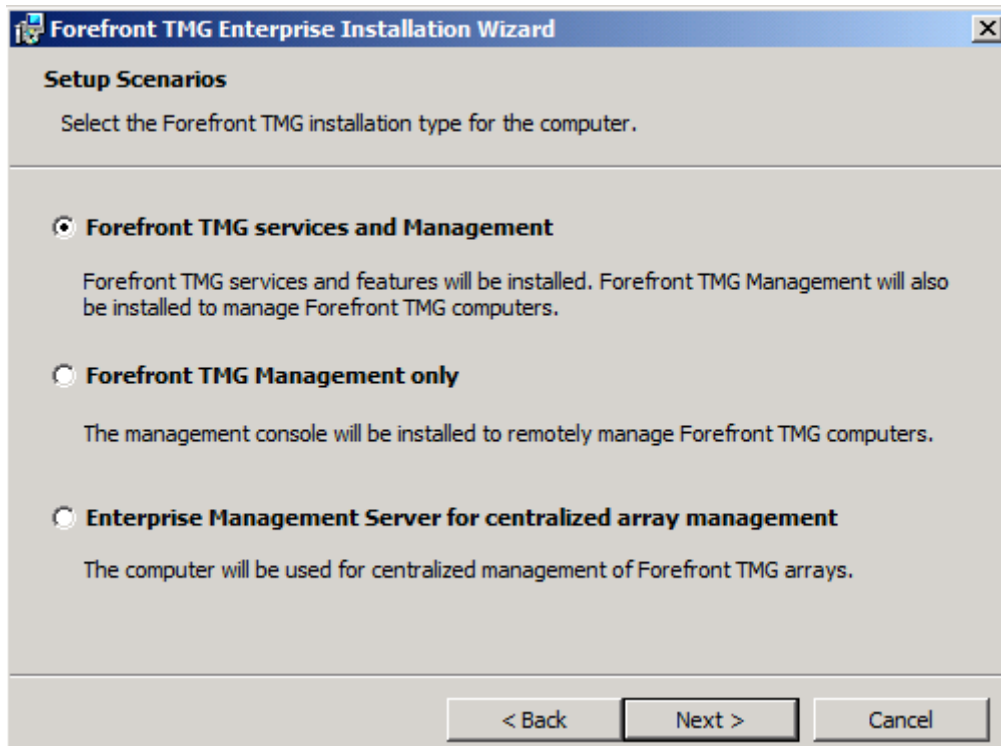
TMG 2010 RC

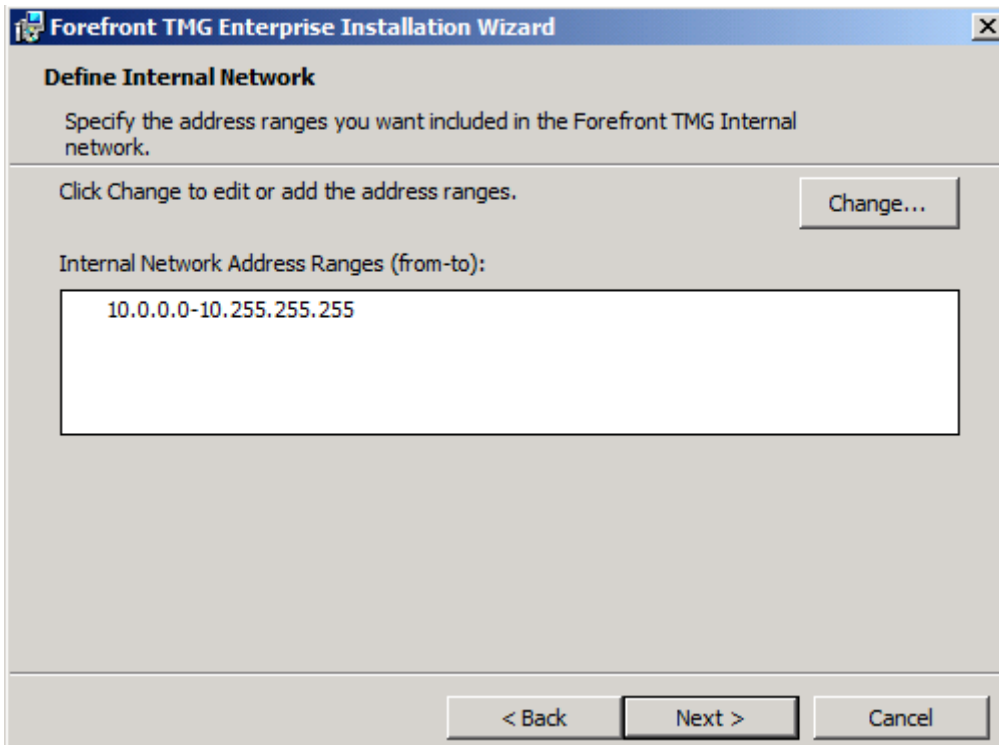


So lang soll es dauern?

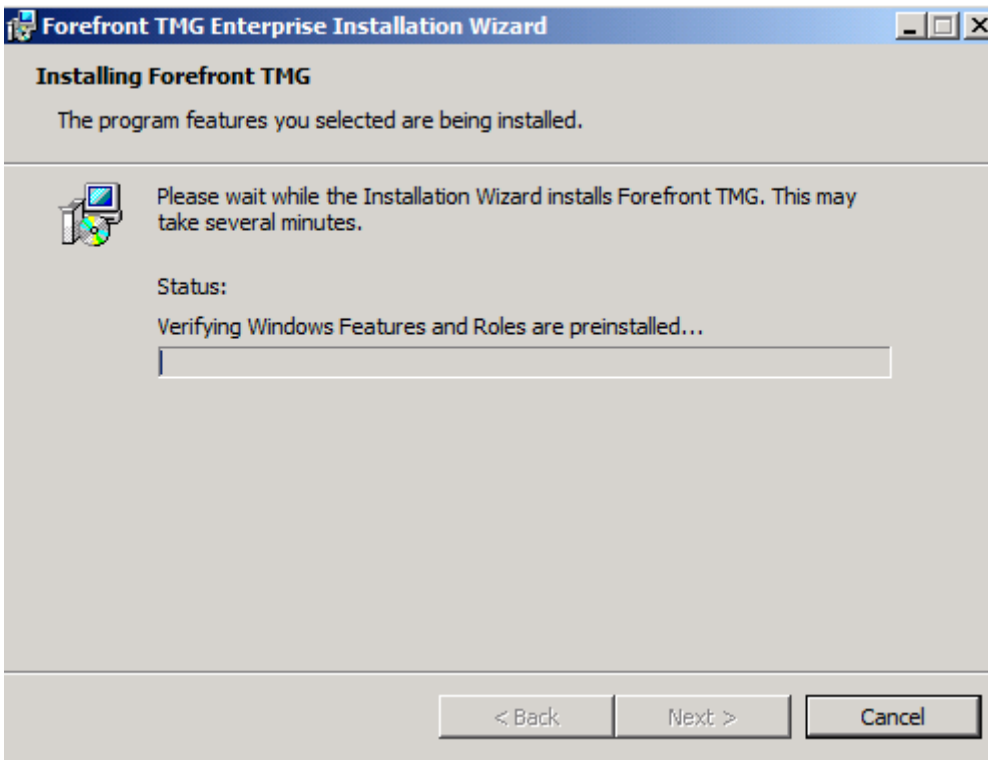


Was soll installiert werden

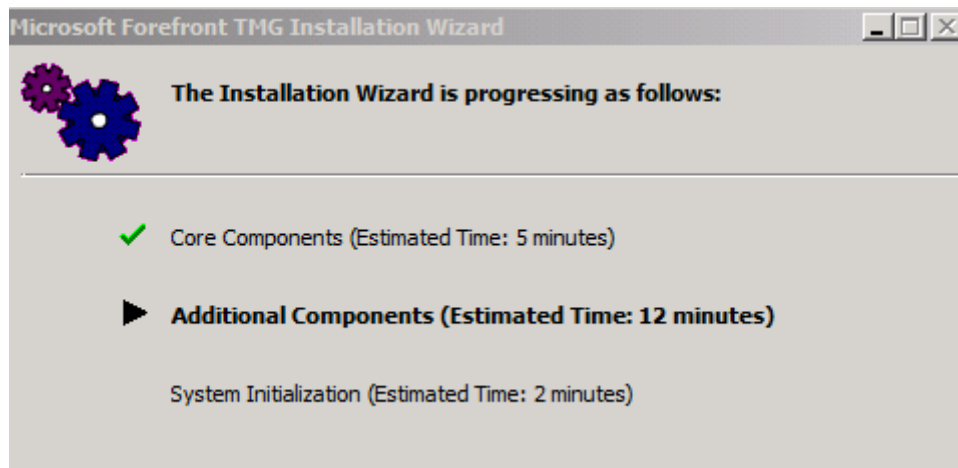




Feuer frei



Es dauert



Achtung bei ISA Migration

Getting Started Wizard

Welcome to Forefront TMG!

To get started, follow the three steps below:



Configure network settings

Define network settings for Forefront TMG, including IP settings, routing rules, and network relationships.



Configure system settings

Define local system settings for Forefront TMG.



Define deployment options

Specify Forefront TMG deployment settings such as how this Forefront TMG server receives Microsoft updates.

[Help about the Getting Started Wizard](#)



If you need to import Microsoft Internet Security and Acceleration (ISA) Server 2006 configuration settings to this computer, you must do this before you run this wizard.

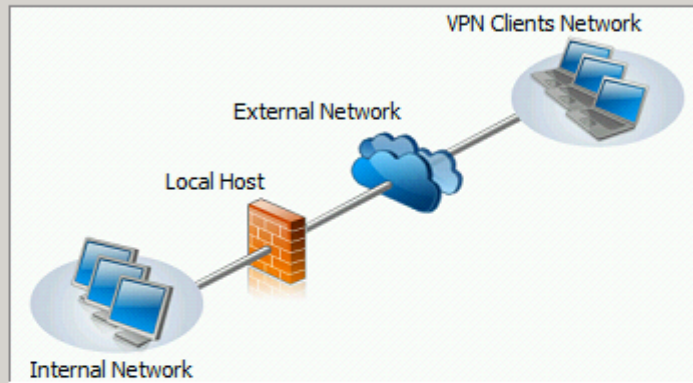
Close



Network Template Selection

Select the network template that best fits your network topology.

- Edge firewall
- 3-Leg perimeter
- Back firewall
- Single network adapter



In this topology, Forefront TMG (Local Host) is deployed at the edge of the Internal network and has two network adapters. One adapter is connected to the Internal network, either directly or through a router or another firewall. Another adapter is connected to the External network (the Internet).

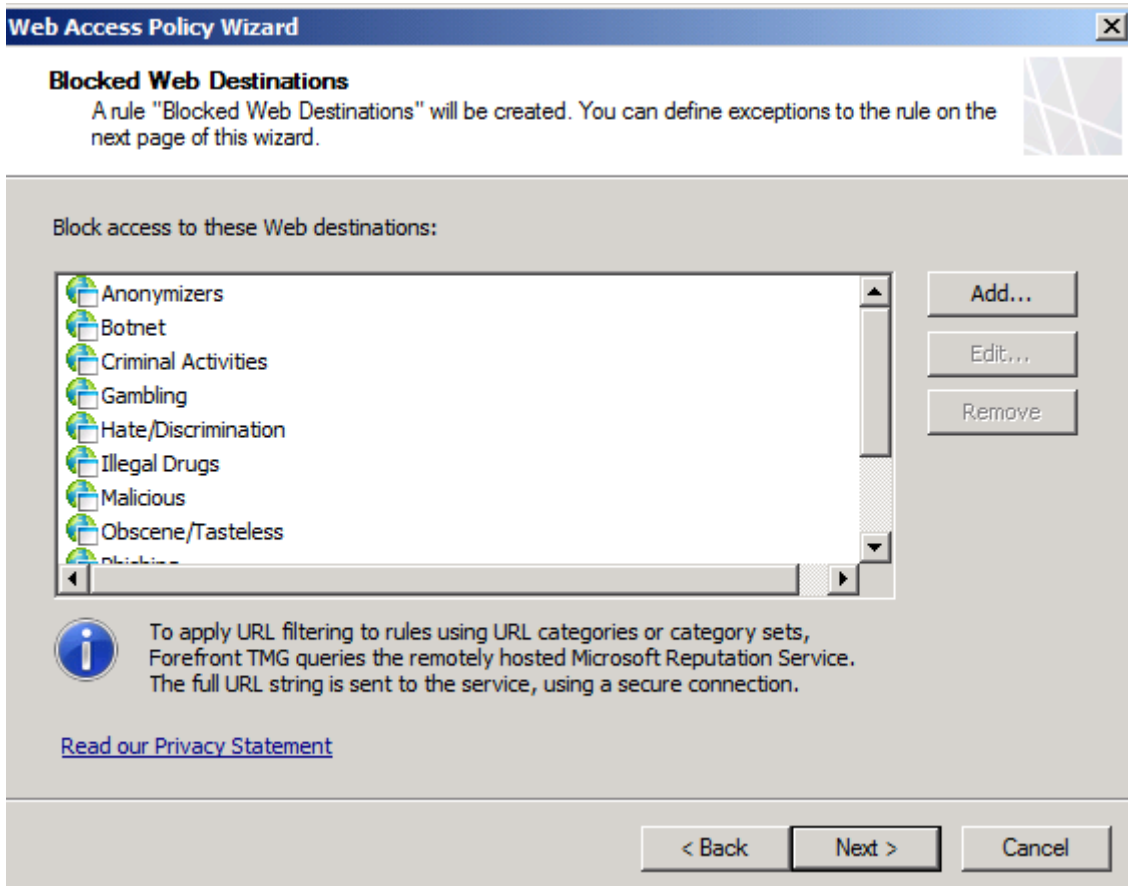
< Back

Next >

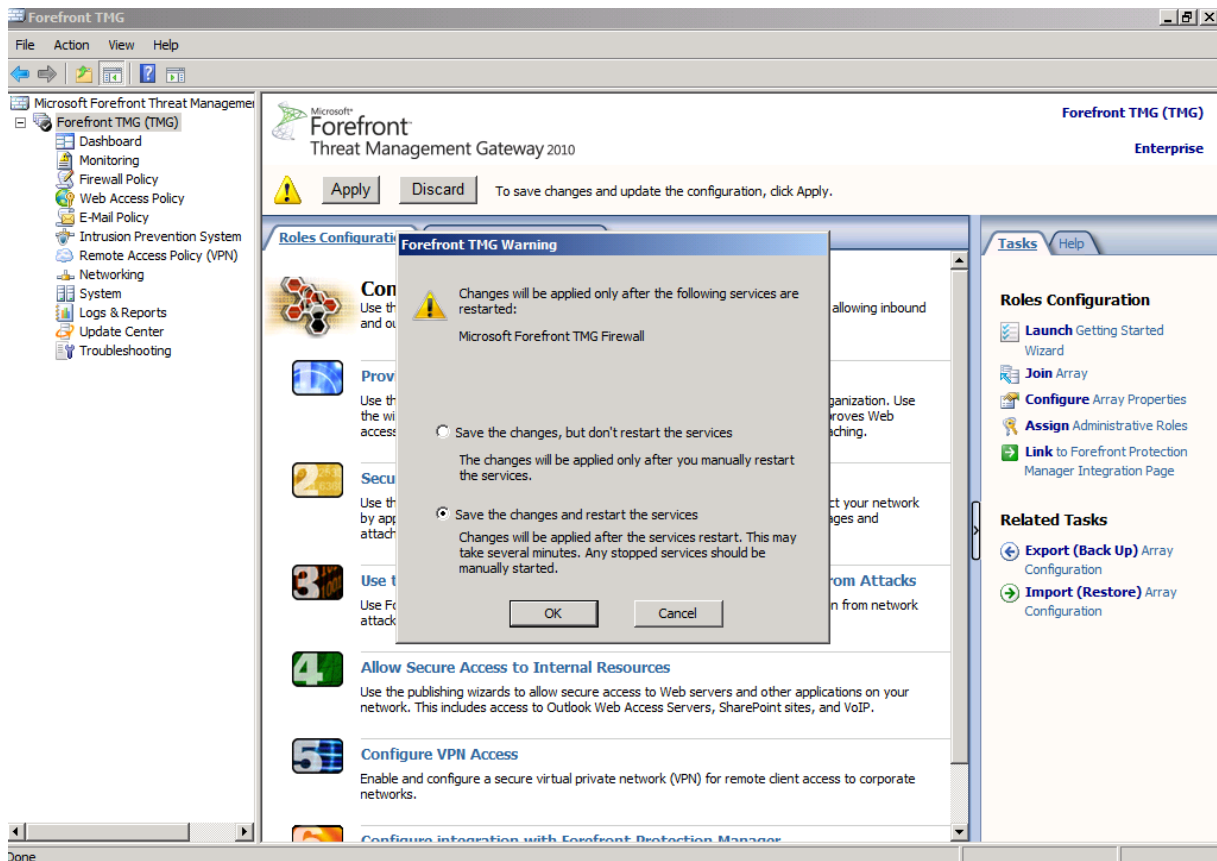
Cancel



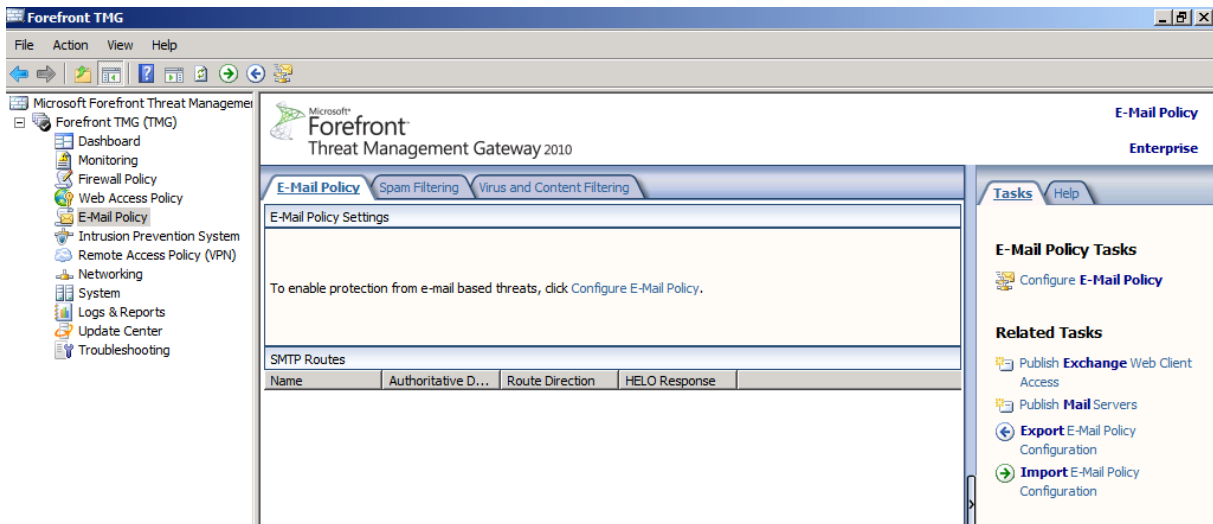
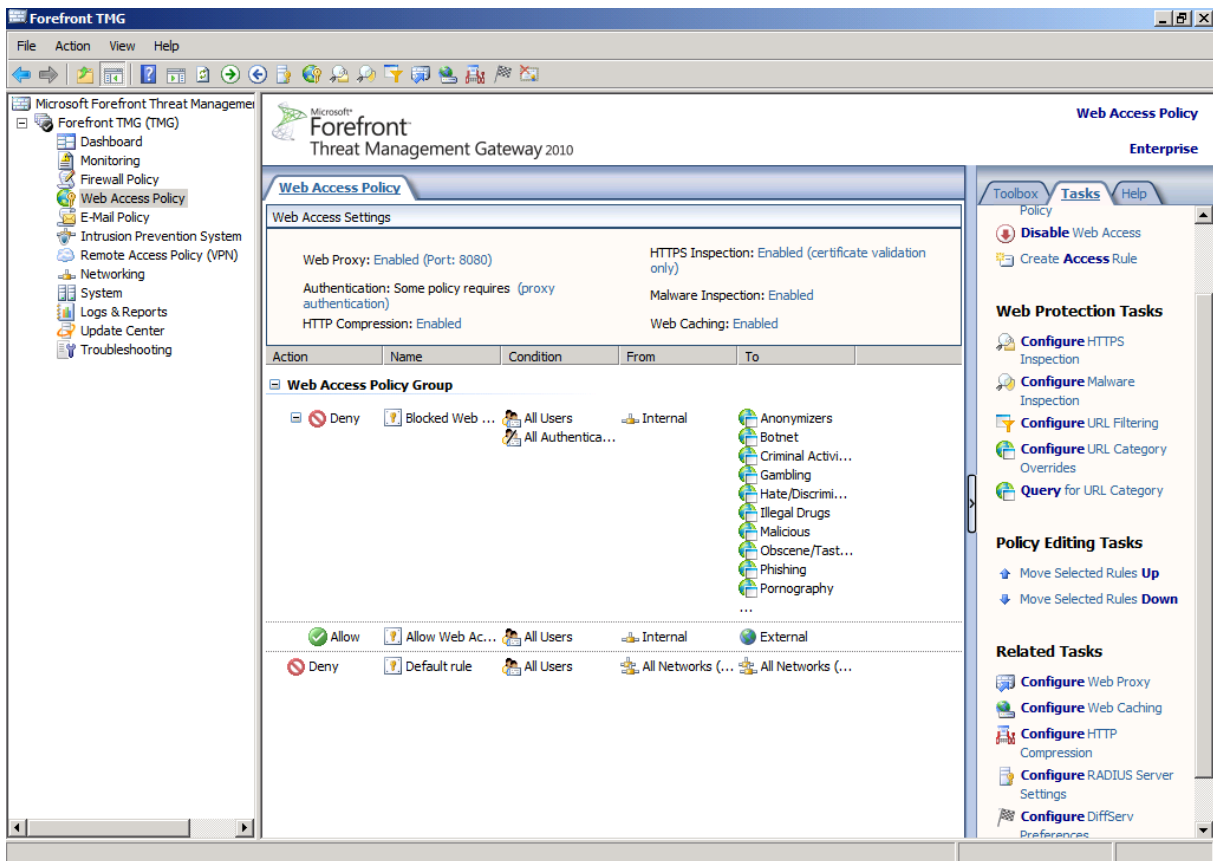
URL Filter



Erster Blick



Jede Menge zu konfigurieren



Ah, hier ist was anders:

E-Mail Policy Wizard

E-Mail Policy Configuration

Forefront TMG leverages the mail protection provided by Microsoft Forefront Protection 2010 for Exchange Server and Exchange Edge Transport server role to provide an integrated mail protection policy

Enable spam filtering

FPES's antispam technology uses multiple filters to scan for unsolicited mail traffic.

Enable virus and content filtering

Virus filters scan mail traffic for viruses and other malware in attached files. Content filters allow you to search for specific words within e-mail messages, and for attachments with specific names and types.

Enable connectivity for EdgeSync traffic

Subscribe to your Microsoft Exchange messaging organization for enhanced anti-spam features. After enabling connectivity, read about the next steps in [Configuring Edge Subscriptions](#).

< Back Next > Cancel



E-Mail Policy Spam Filtering Virus and Content Filtering

E-Mail Policy Settings

E-Mail Policy: Enabled

Spam Filtering: Enabled

Virus and Content Filtering: Enabled

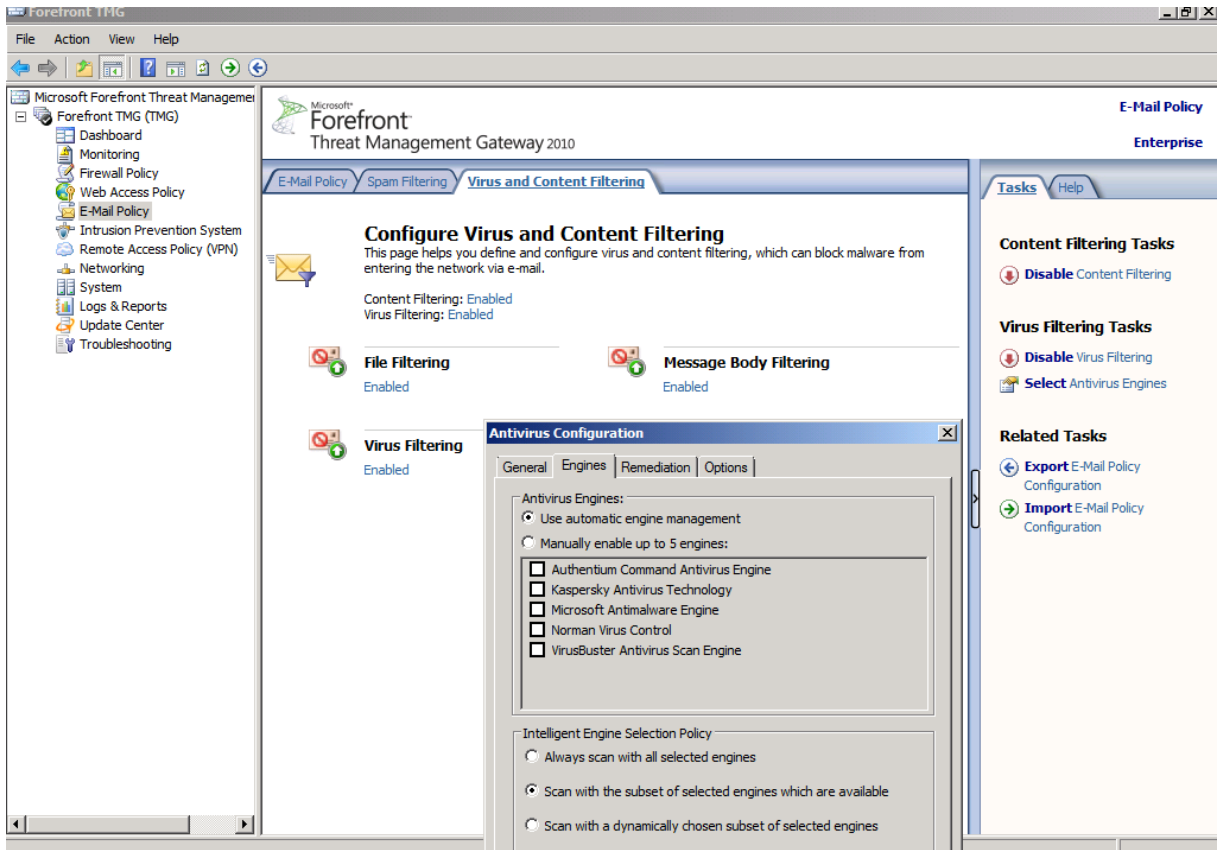
Edge Subscription Connectivity: Enabled

Protection Manager Integration: Disabled

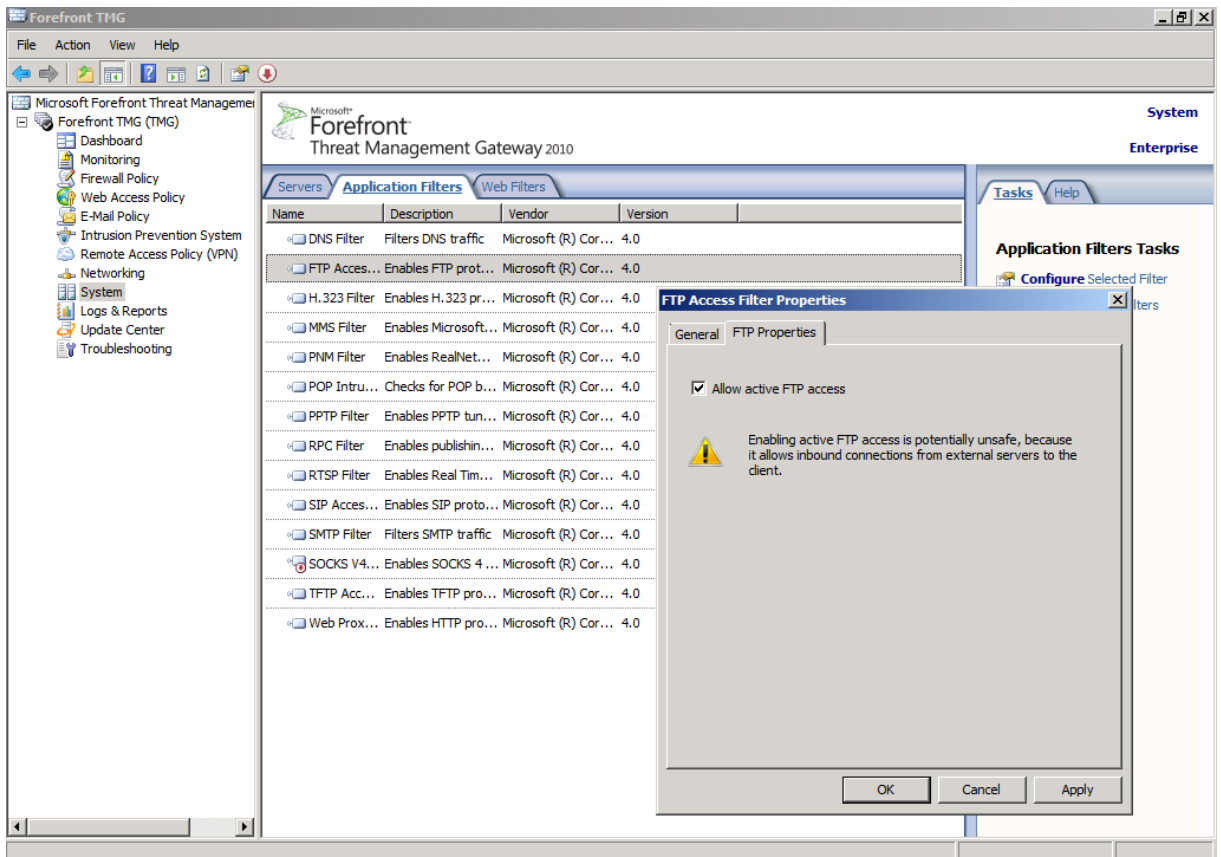
E-Mail Policy Integration Mode: Enabled

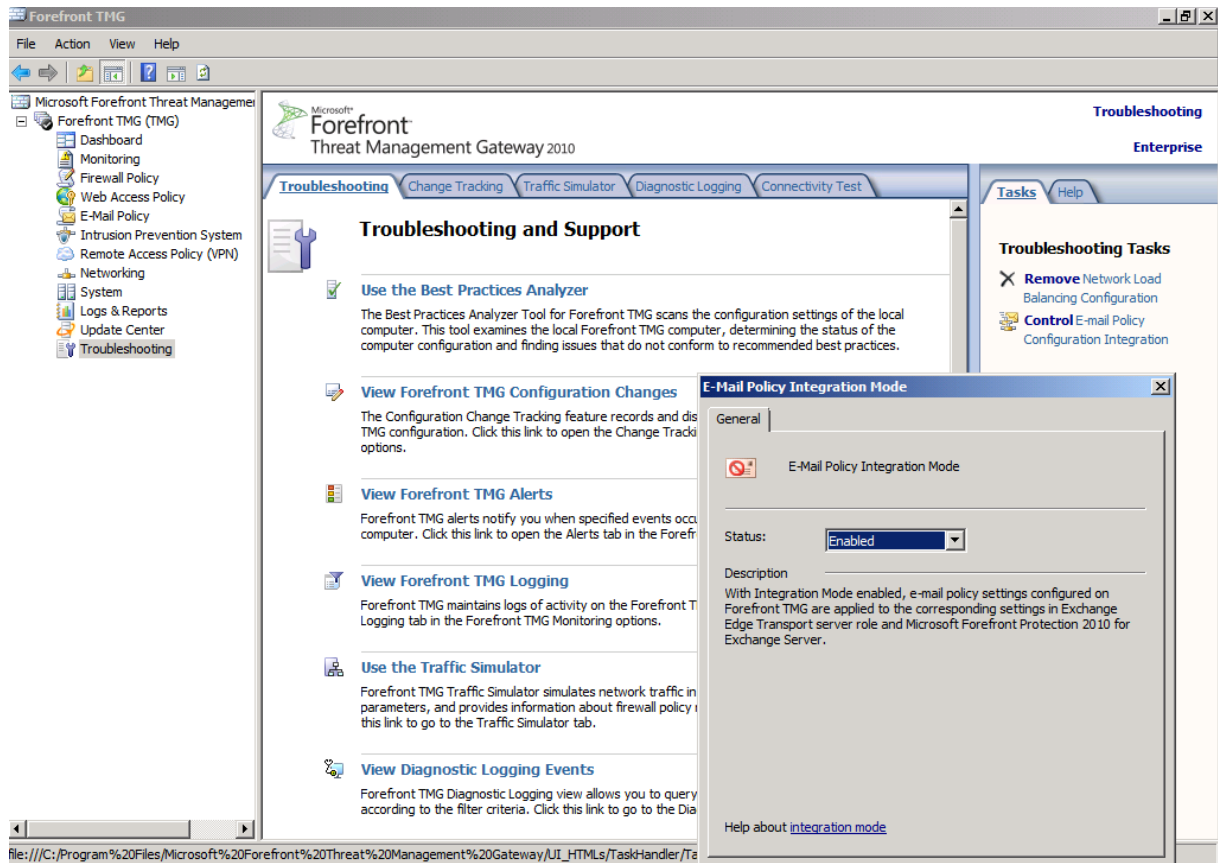
SMTP Routes

Name	Authoritative Domains	Route Direction	HELO Response
External_...	Configured by Edge Subscription	External	geheim.de
Internal_...	Configured by Edge Subscription	Internal	

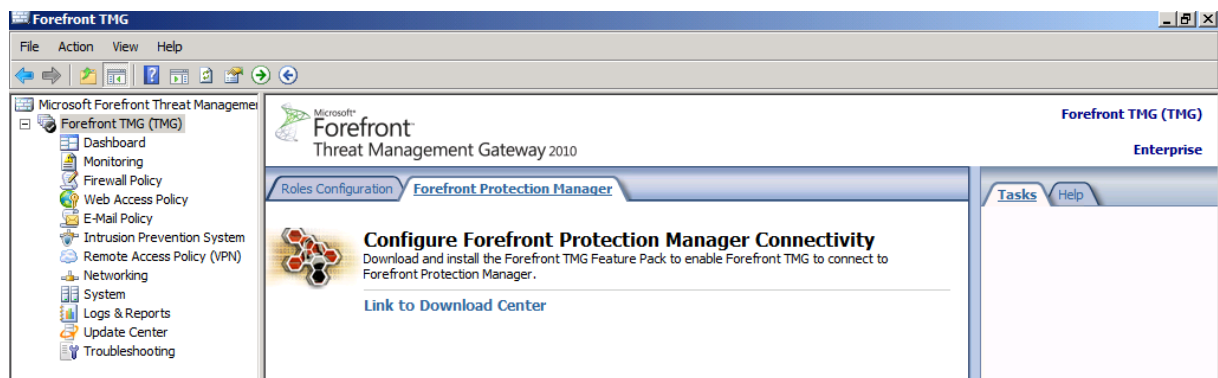


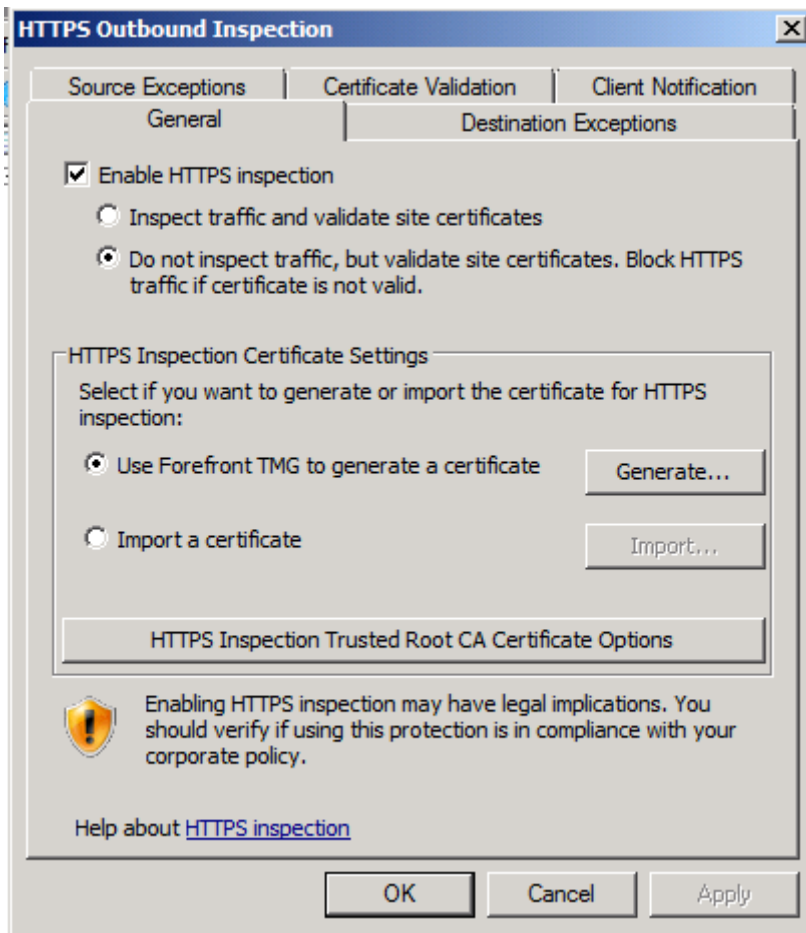
Allow Active FTP





Stirling, ahhh FPM 2010, was sich uebrigens noch verzoeigert:
<http://blogs.technet.com/forefront/archive/2009/10/08/schedule-and-strategy-update-for-forefront-endpoint-protection.aspx>





Alles in allem nicht viel neues, war aber auch nicht zu erwarten, da TMG Beta 2 schon Feature Complete sein sollte.