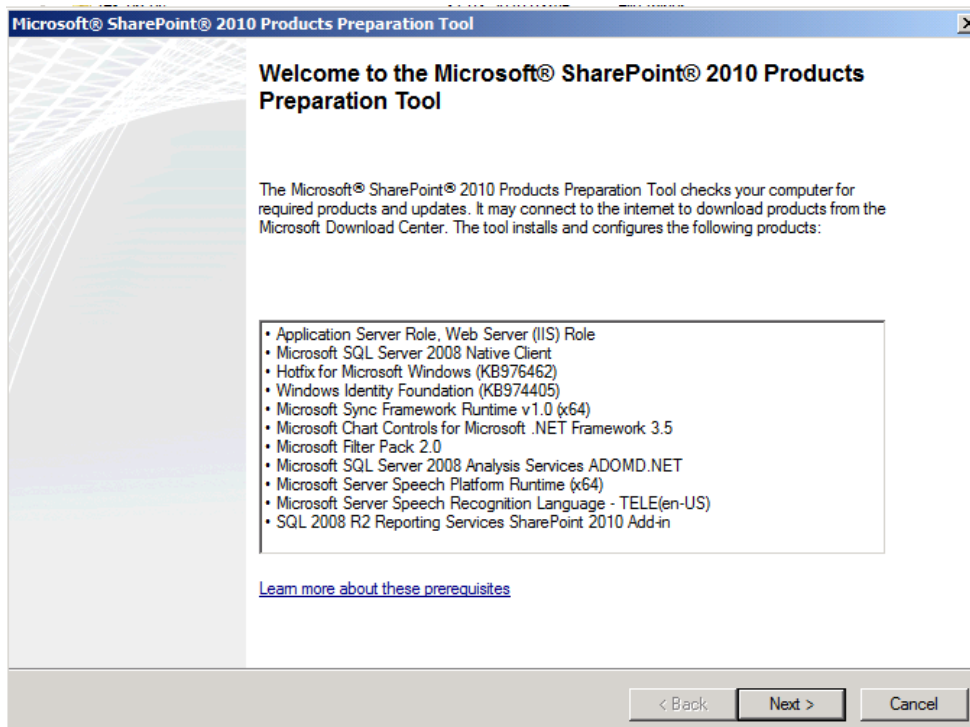
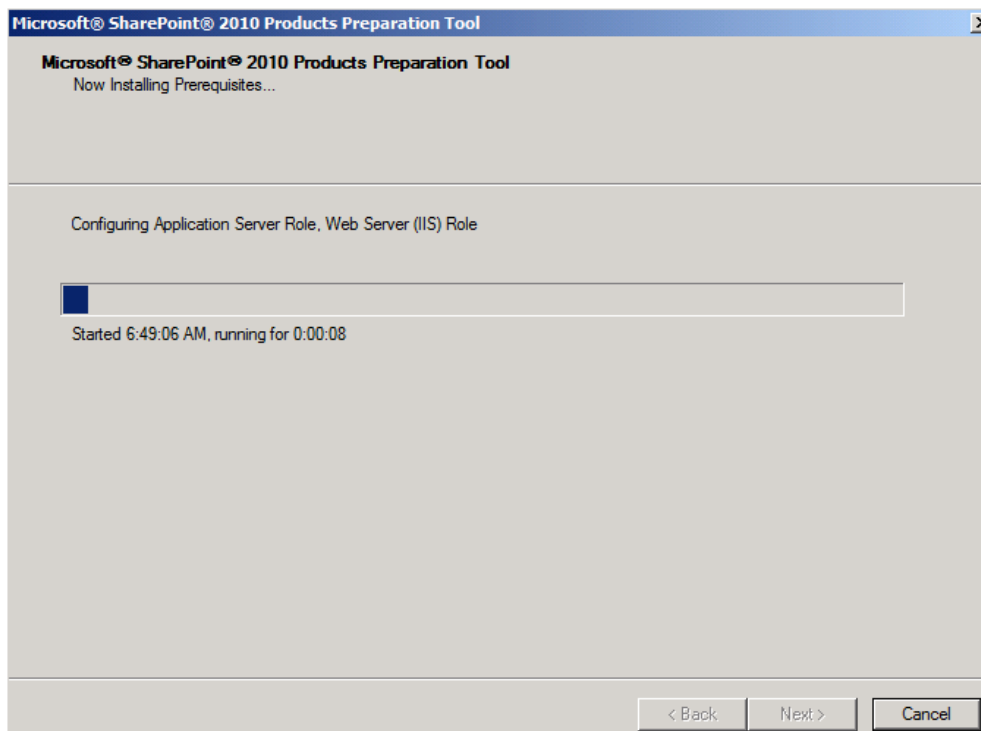


Forefront Security fuer Sharepoint

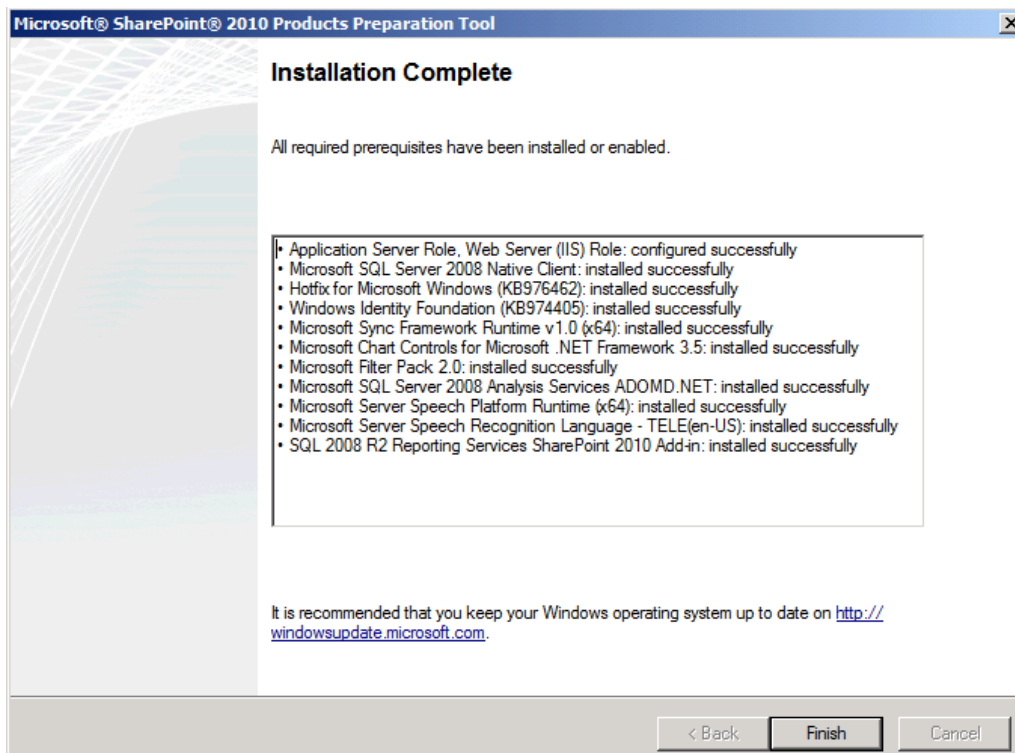
Sharepoint 2010 Preparation Utility



Und ab geht's

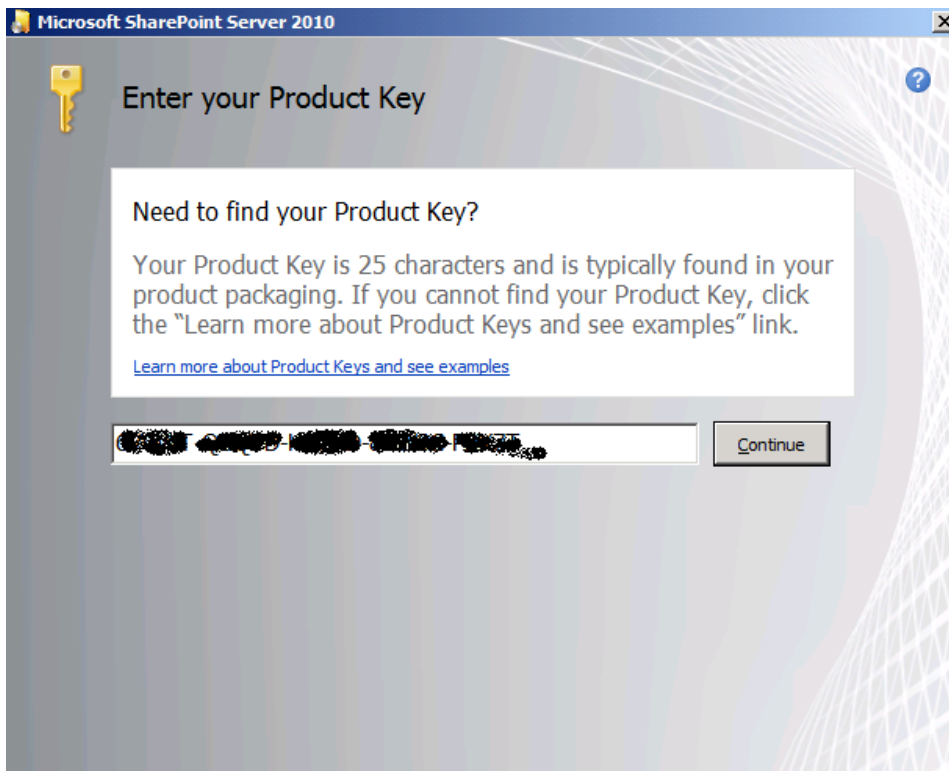


Alles successful



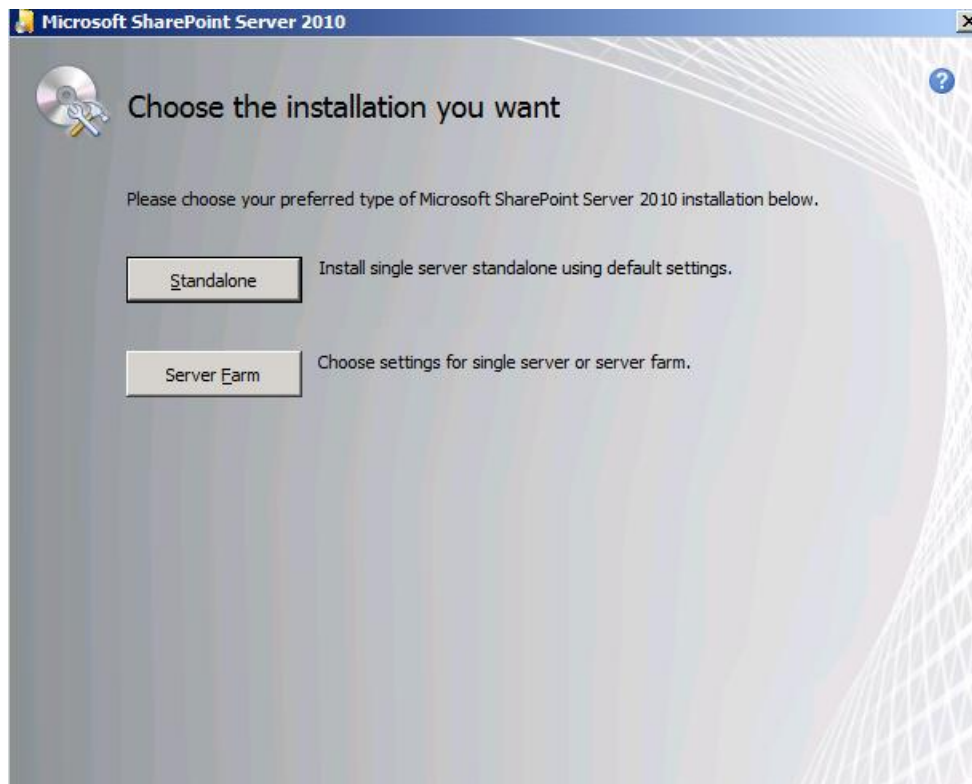
Setup anwerfen

Lizenzkey angeben

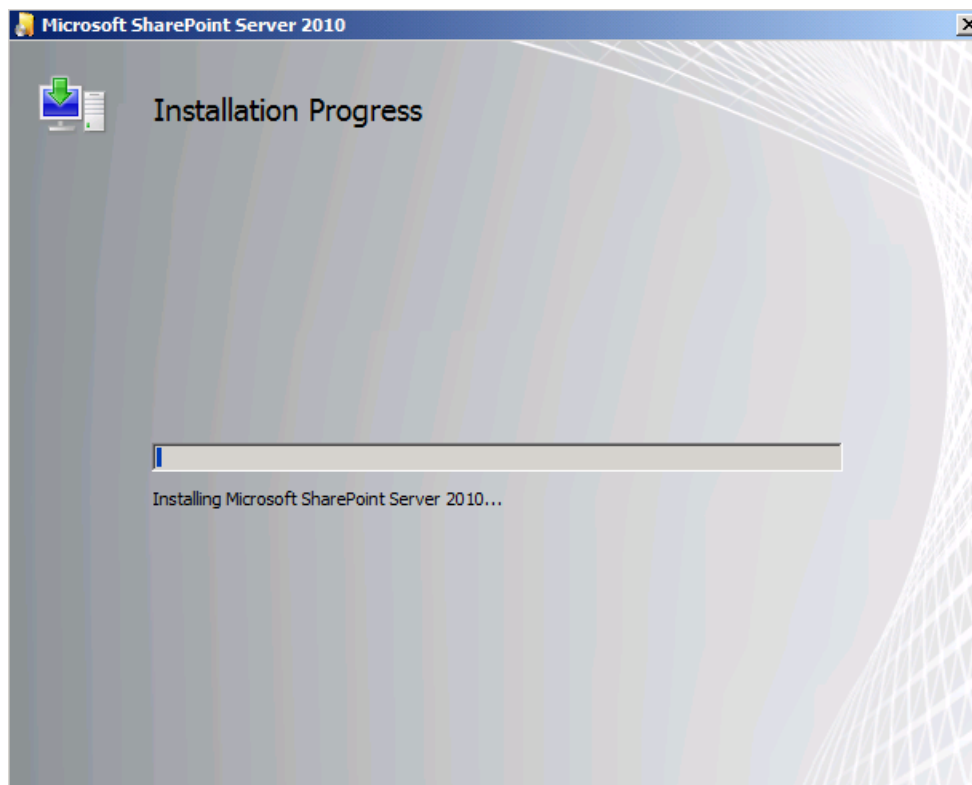


Lizenzvertrag lesen, verstehen und ggfs. akzeptieren

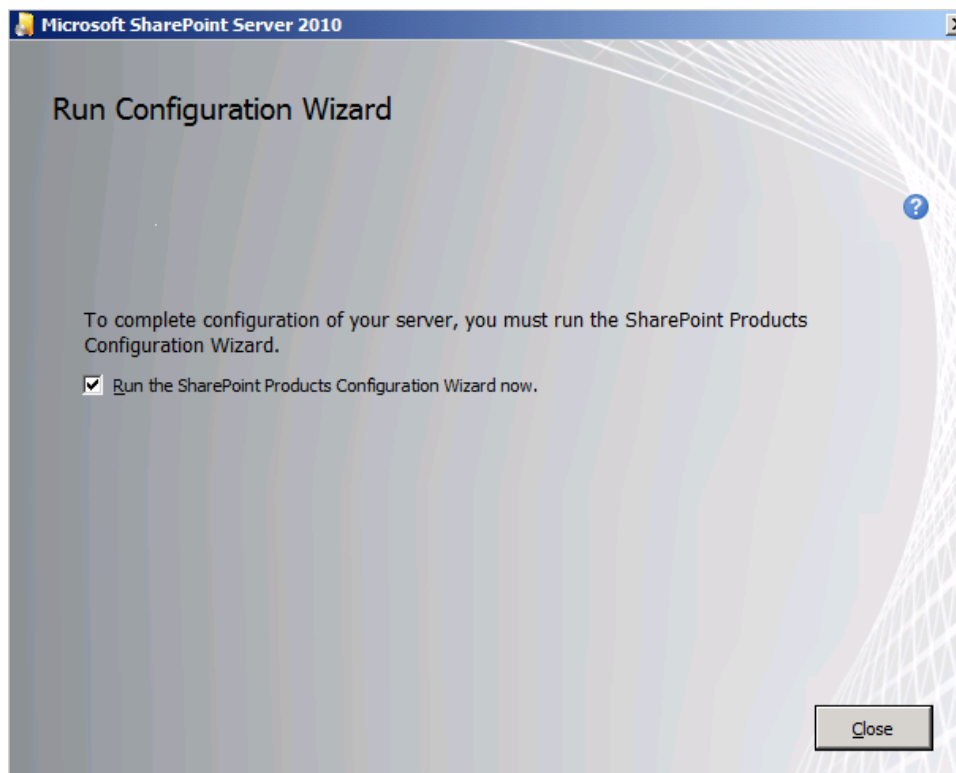
Standalone Installation



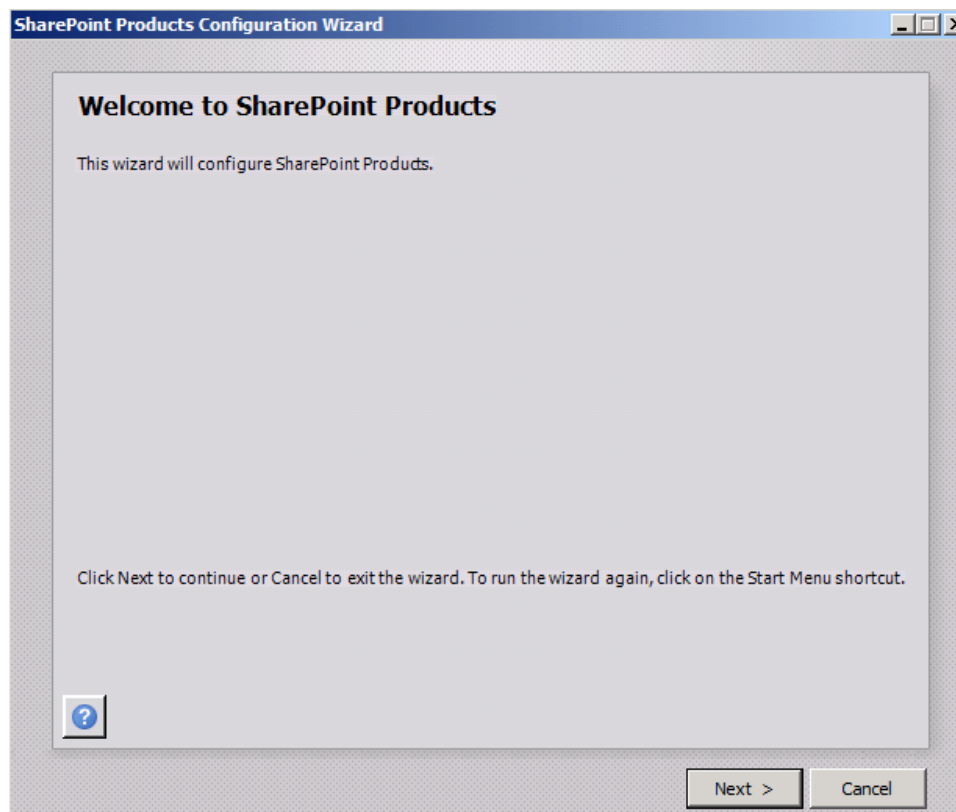
Installation



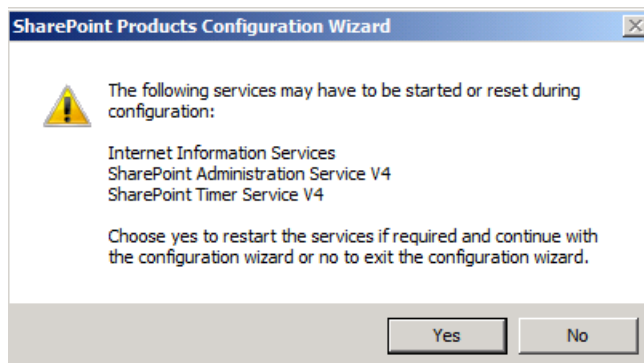
Fertig



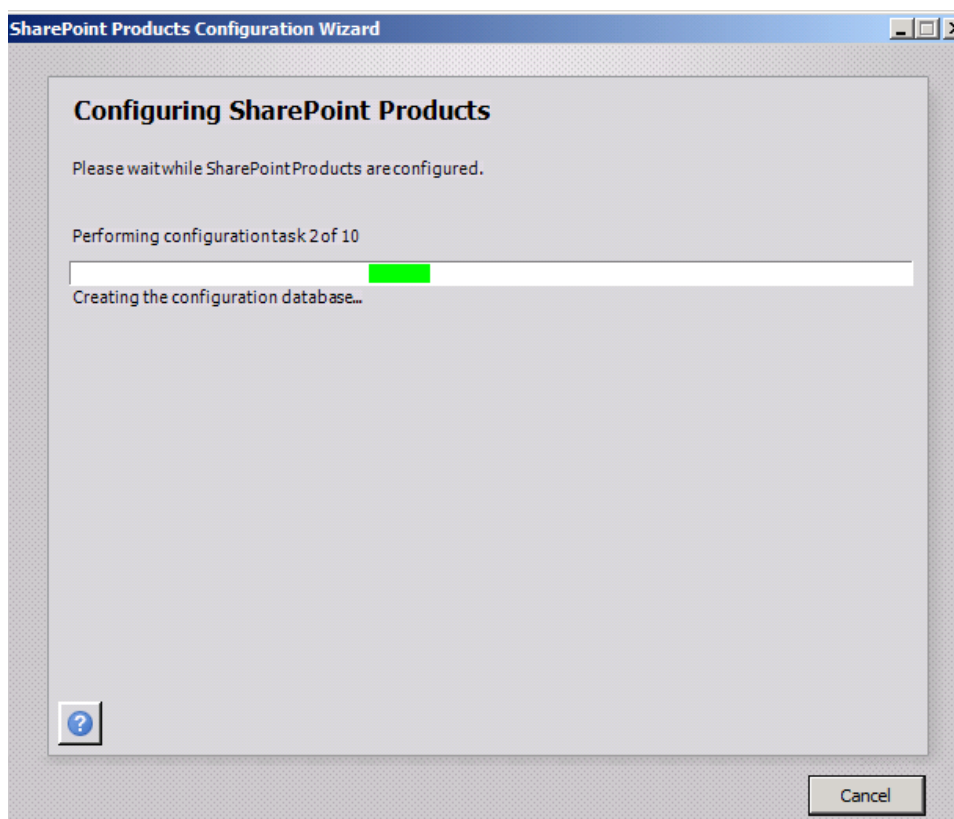
Wizard



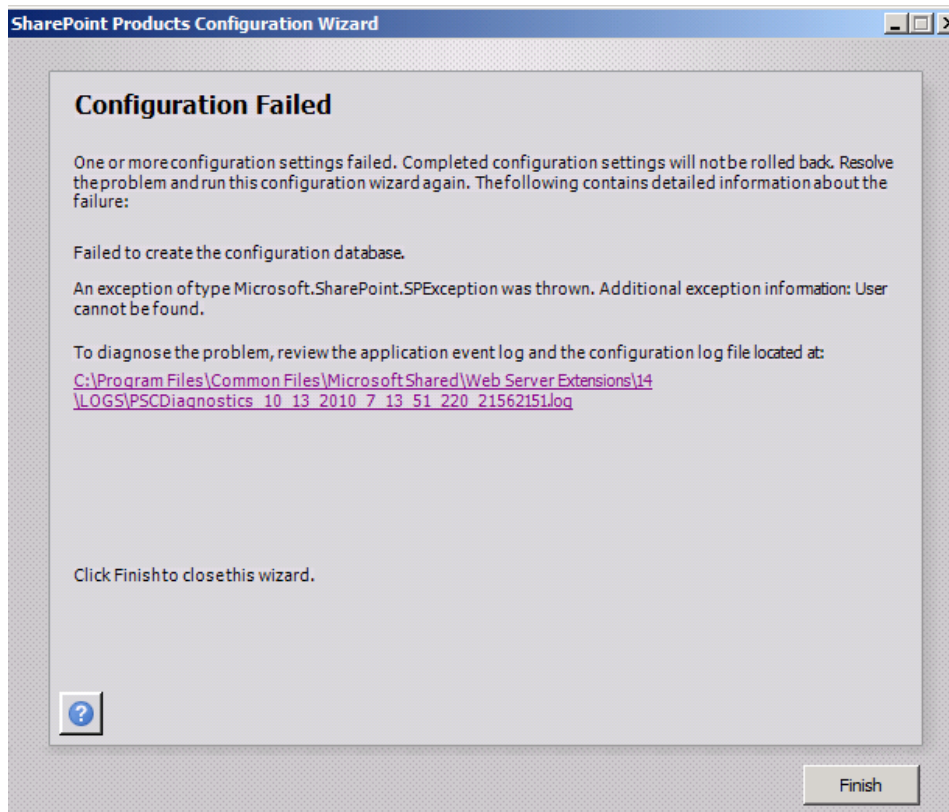
OK, da koennte was neu gestartet werden muessen



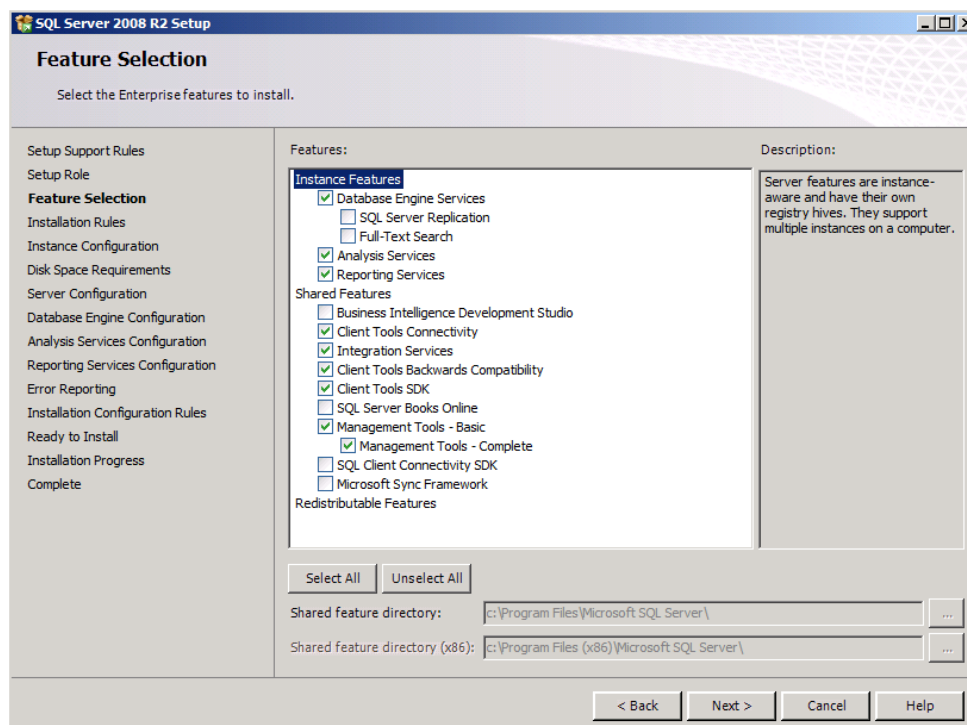
Nochmal Balken beobachten



Aha

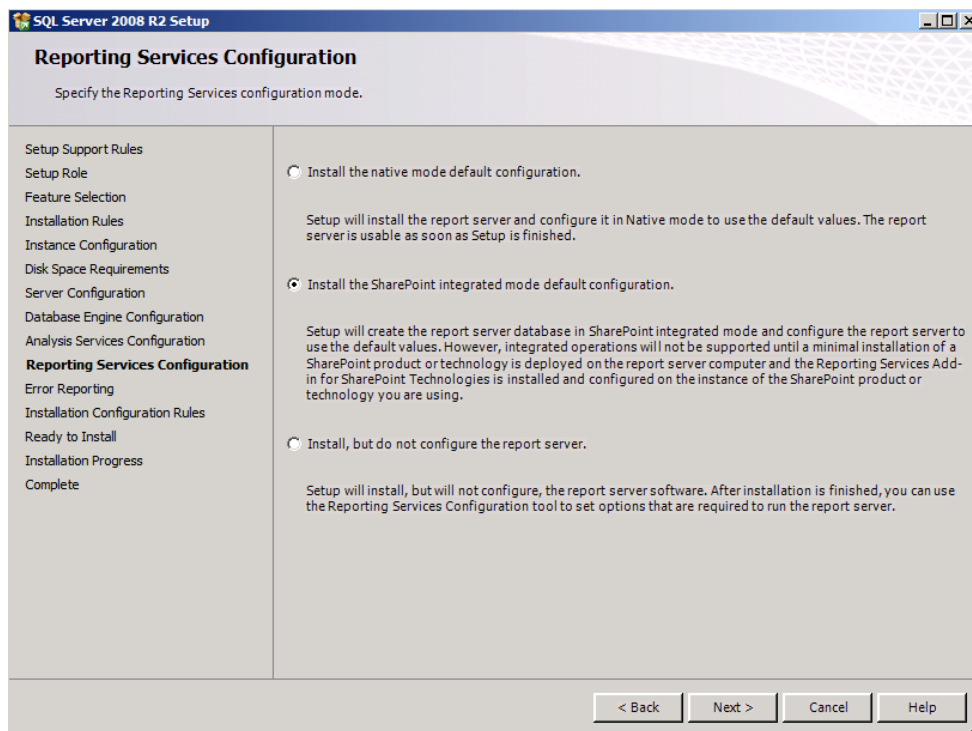


Installieren wir doch erst mal einen „echten“ SQL Server



23 Klicks spaeter

Im Sharepoint Integrations Modus installieren



Nochmal



SharePoint Products Configuration Wizard

Specify Configuration Database Settings

All servers in a server farm must share a configuration database. Type the database server and database name. If the database does not exist, it will be created. To reuse an existing database, the database must be empty. For additional information regarding database server security configuration and network access please see [help](#).

Database server:

Database name:


Specify Database Access Account

Select an existing Windows account that this machine will always use to connect to the configuration database. If your configuration database is hosted on another server, you must specify a domain account.

Type the username in the form DOMAIN\User_Name and password for the account.

Username:

Password:



< Back Next > Cancel

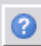
SharePoint Products Configuration Wizard

Specify Farm Security Settings

Please enter a new passphrase for the SharePointProducts farm. This passphrase is used to secure farm configuration data and is required for each server that joins the farm. The passphrase can be changed after the farm is configured.

Passphrase:

Confirm passphrase:



< Back Next > Cancel

SharePoint Products Configuration Wizard

Configure SharePoint Central Administration Web Application

A SharePoint Central Administration Web Application allows you to manage configuration settings for a server farm. The first server added to a server farm must host this web application. To specify a port number for the web application hosted on this machine, check the box below and type a number between 1 and 65535. If you do not specify a port number, a random one will be chosen.


☒ Specify port number:

Configure Security Settings

Kerberos is the recommended security configuration to use with Integrated Windows authentication. Kerberos requires special configuration by the domain administrator. NTLM authentication will work with any application pool account and the default domain configuration. [Show more information.](#)

Choose an authentication provider for this Web Application.

☒ NTLM
☐ Negotiate (Kerberos)



< Back Next > Cancel

SharePoint Products Configuration Wizard

Completing the SharePoint Products Configuration Wizard

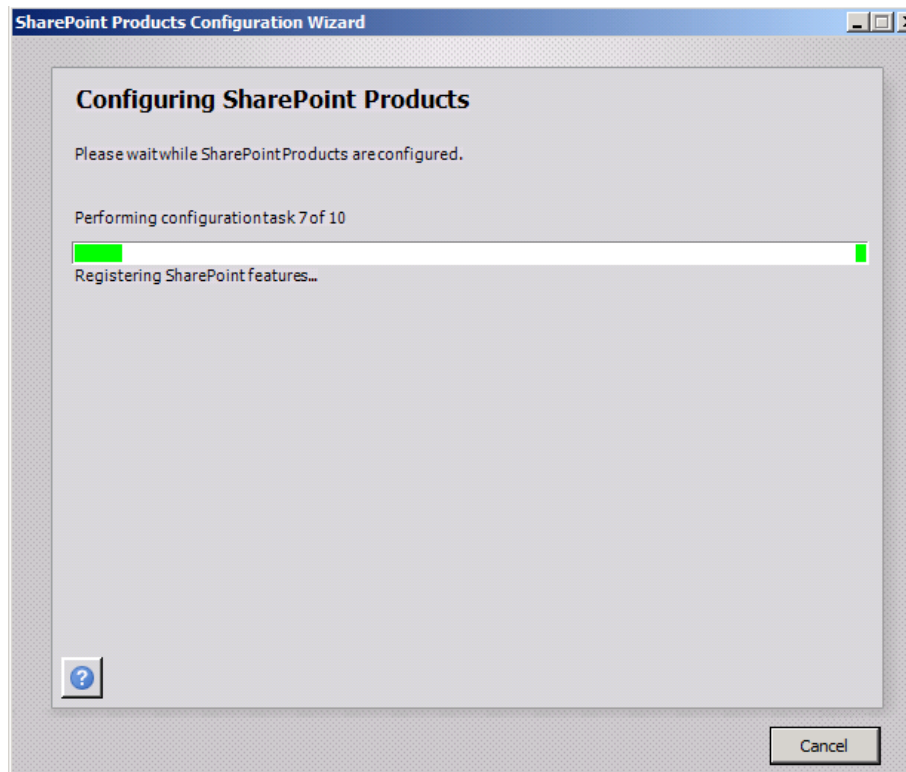
The following configuration settings will be applied:

■ Configuration Database Server	<input type="text" value="sharepoint"/>
■ Configuration Database Name	<input type="text" value="SharePoint_Config"/>
■ Host the Central Administration Web Application	<input type="text" value="yes"/>
■ Central Administration URL	<input type="text" value="http://sharepoint:7821/"/>
■ Authentication provider	<input type="text" value="NTLM"/>

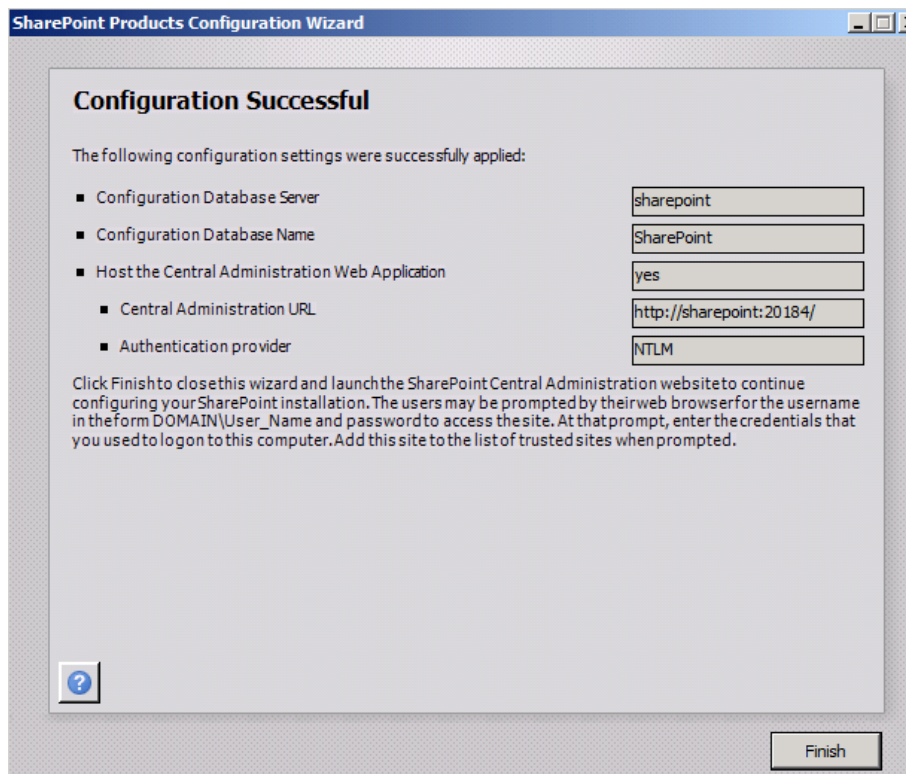
Click Next to apply configuration settings.



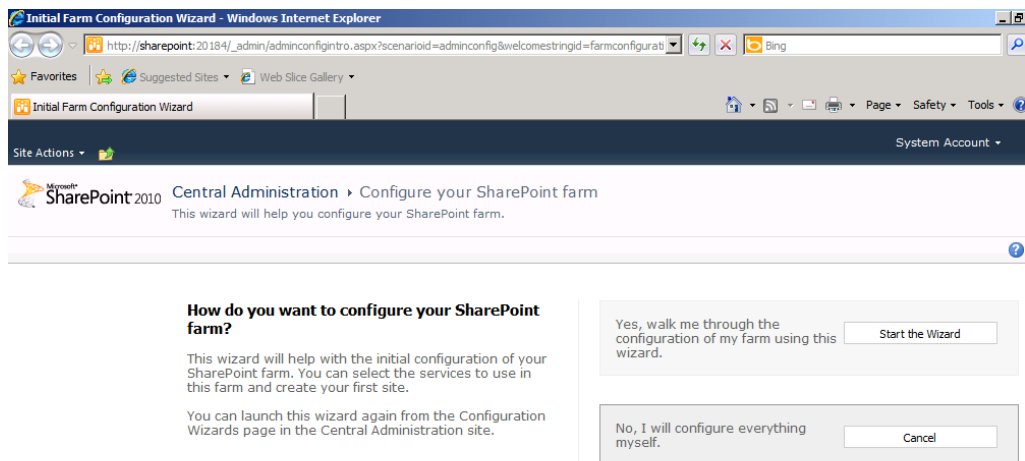
< Back Next > Cancel



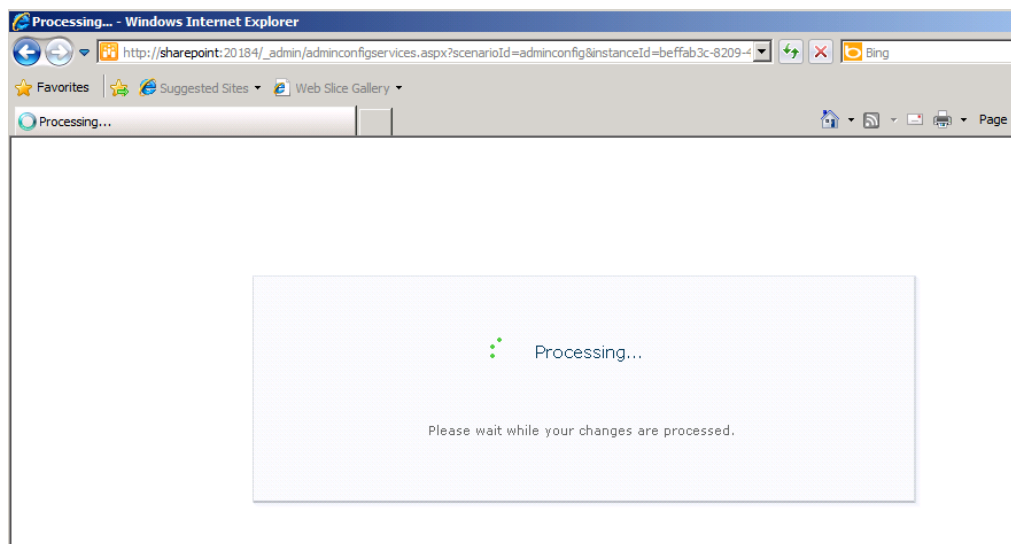
Jippie



Webinterface – Farm Konfiguration



Konfigurieren und processieren



Neue Site

Create Site Collection - Windows Internet Explorer

http://sharepoint:20184/_admin/createsite.aspx?scenarioId=adminconfig&instanceId=beffab3c-8209-4d19-861c

Site Actions System Account

Title and Description
Type a title and description for your new site. The title will be displayed on each page in the site.

Title: Marcimarc
Description:

Web Site Address
Specify the URL name and URL path to create a new site, or choose to create a site at a specific path.
To add a new URL Path go to the [Define Managed Paths](#) page.

URL: http://sharepoint/

Template Selection
A site template determines what lists and features will be available on your new site. Select a site template based on the descriptions of each template and how you intend to use the new site. Many aspects of a site can be customized after creation. However, the site template cannot be changed once the site is created.

Select a template:

Collaboration Meetings Enterprise Publishing Custom

Team Site
Blank Site
Document Workspace
Blog
Group Work Site
Visio Process Repository

A site for a person or team to post ideas, observations, and expertise that site visitors can comment on.

Skip OK Cancel

Finish not swedish

Initial Farm Configuration Wizard - Windows Internet Explorer

http://sharepoint:20184/_admin/adminconfigresults.aspx?scenarioId=adminconfig&instanceId=beffab3c-8209-4d19-861c

Site Actions System Account

Microsoft SharePoint 2010 Central Administration > Configure your SharePoint farm

Central Administration
Application Management
System Settings
Monitoring
Backup and Restore
Security
Upgrade and Migration
General Application Settings
Configuration Wizards

This completes the Farm Configuration Wizard.
Details of this SharePoint farm:

Site Title: Marcimarc
Site URL: <http://sharepoint>

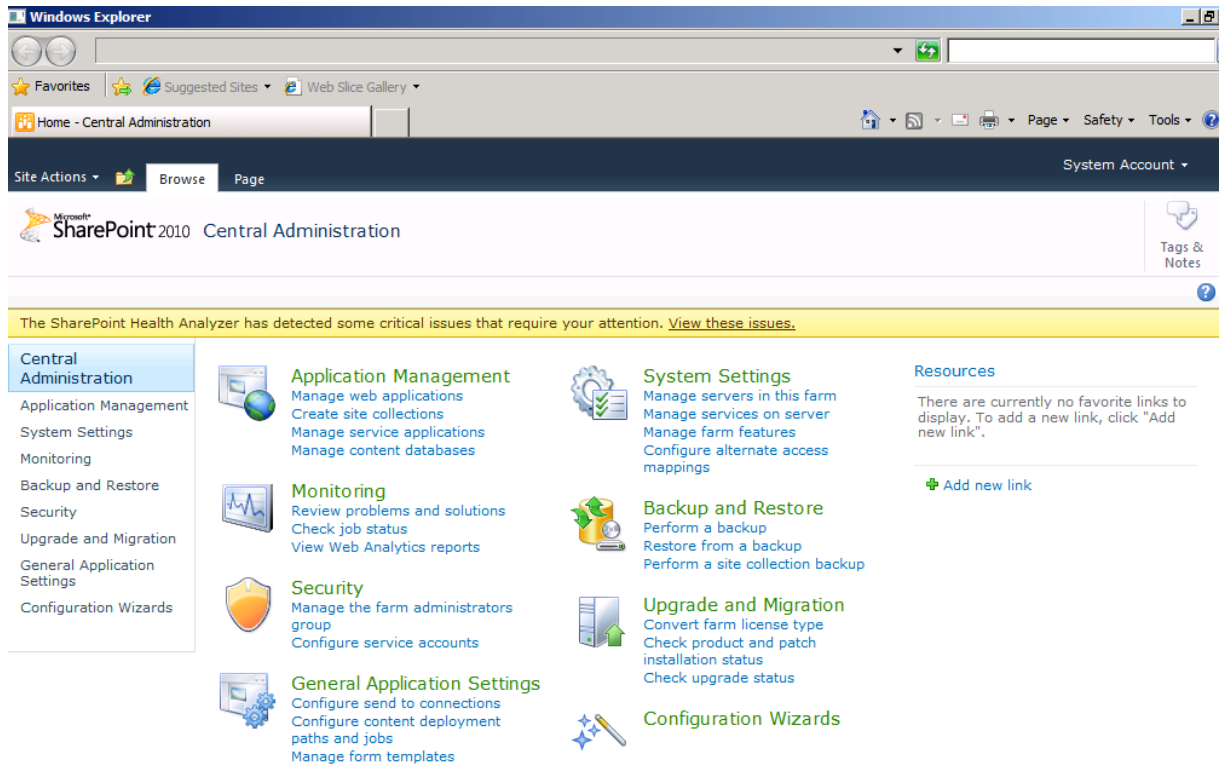
Service Applications:

- Access Services Web Service Application
- Secure Store Service Application
- State Service
- PerformancePoint Service Application
- Visio Graphics Service Application
- Managed Metadata Service
- Web Analytics Service Application
- Excel Services Application Web Service Application
- Security Token Service Application
- Application Discovery and Load Balancer Service Application
- Usage and Health Data Collection Service Application
- Search Administration Web Service Application
- Word Automation Services
- Application Registry Service
- User Profile Service Application
- Business Data Connectivity Service Application
- Search Service Application

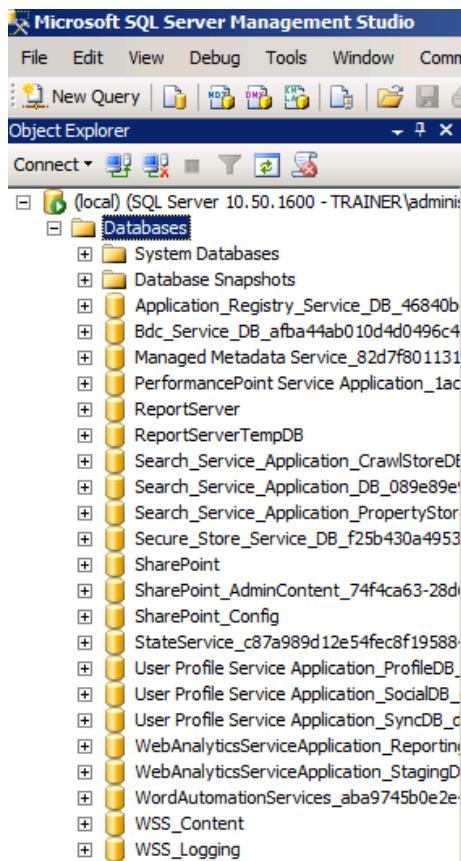
Click Finish to continue to the SharePoint Central Administration page where you can continue configuring other settings for your farm.
To return to this wizard, or access additionally installed wizards, click 'Configuration Wizards' in the left navigation pane.

Finish

OK, soll erst mal reichen, mit dem Rest beschaeftigen wir uns, wenn wir den Blogeintrag ADFS Part II vorbereiten.

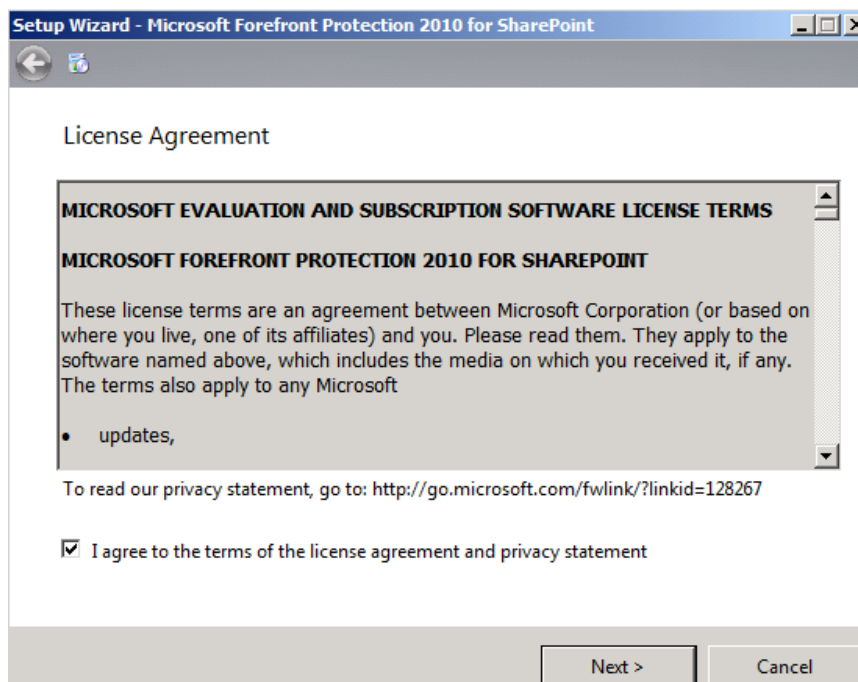


Ah ja, ne Menge Datenbanken fuer ein System

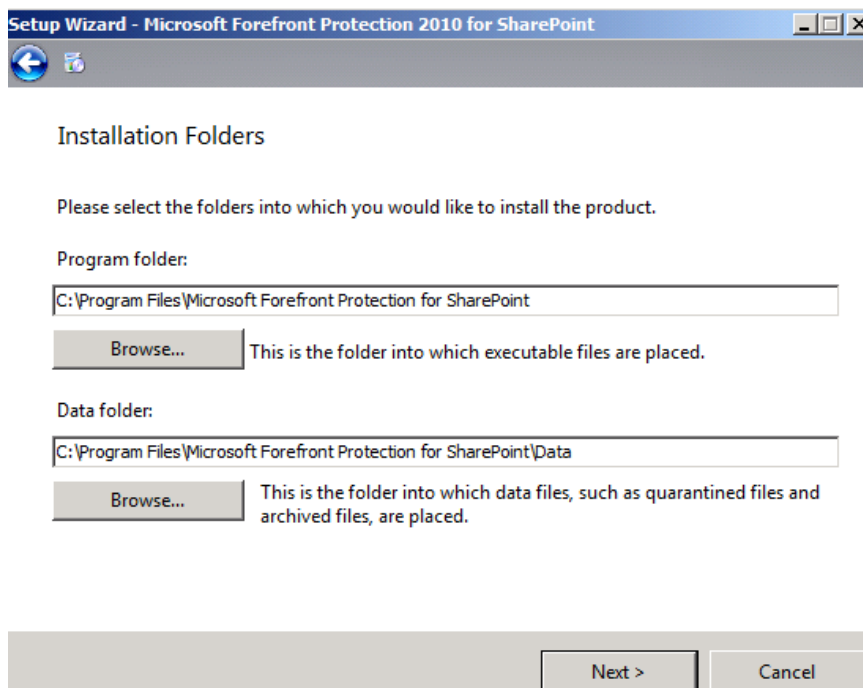
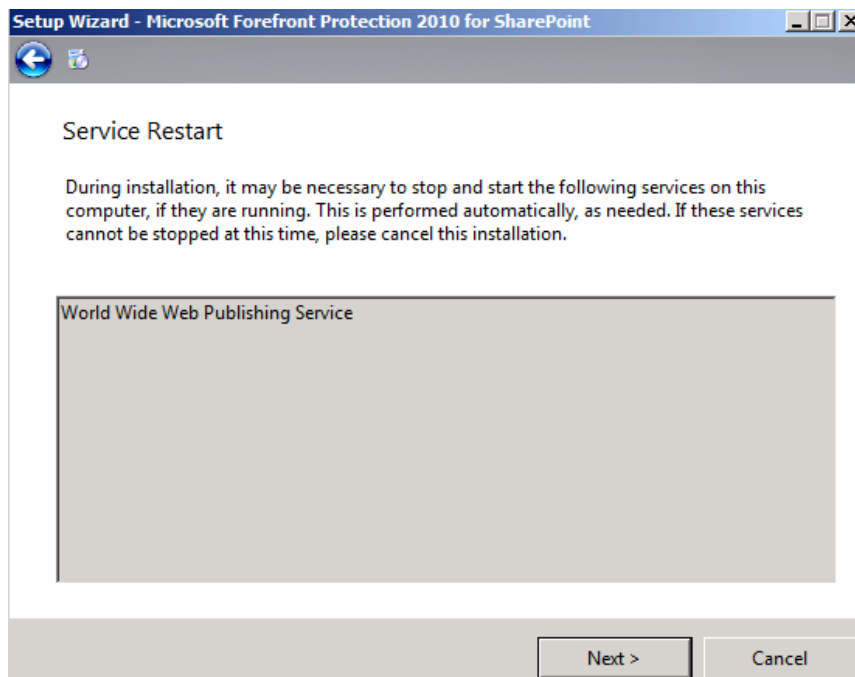


Forefront Security fuer Sharepoint

Lizenzvertrag lesen, verstehen und ggfs. zustimmen



OK, WWW Dienst neu starten



Proxy oder nicht fuer Updates

Account mit Adminrechten fuer Windows und Sharepoint angeben (auf Produktivsystemen natuerlich nicht den Admin nehmen)

Setup Wizard - Microsoft Forefront Protection 2010 for SharePoint

SharePoint Information

User name:
trainer\administrator

Password:
●●●●●●

The account used to install Forefront Protection 2010 for SharePoint should be entered using the Domain\Account format when the server is part of a domain. This account must be a member of the Local Administrators group on the SharePoint server and have SharePoint Farm Administrators privileges. If SharePoint is configured to connect to the database using Windows authentication, this account must also be a member of the SQL Sysadmin role on the database server. By default, members of the Local Administrators group on the SQL server are members of the Sysadmin role.

Next > Cancel

Feuer Frei

Setup Wizard - Microsoft Forefront Protection 2010 for SharePoint

Confirm Settings

Verify that all information is correct. Confirm that you want to proceed with the installation by clicking Next.

Microsoft Forefront Server Protection

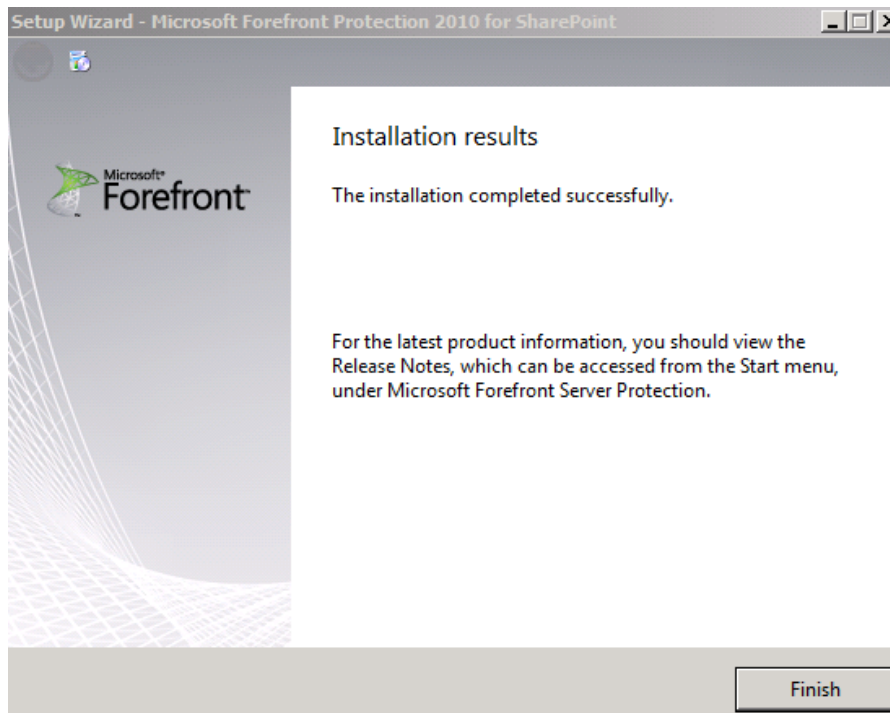
Please wait while Windows configures Microsoft Forefront Server Protection

Cancel






definition files must be downloaded for all engines before the server is fully protected. An update will be automatically scheduled to start 5 minutes after installation.

Next > Cancel

Erfolgreich

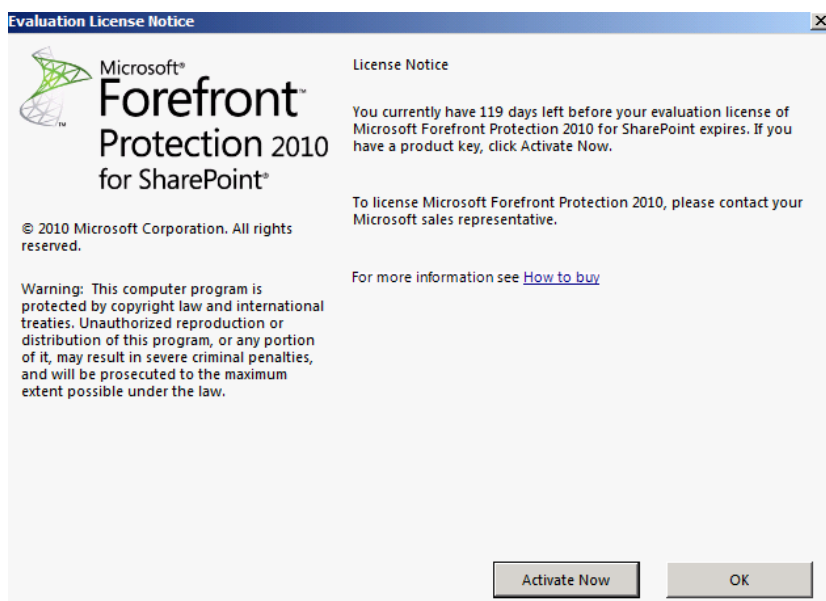


Einige neue Forefront Dienste

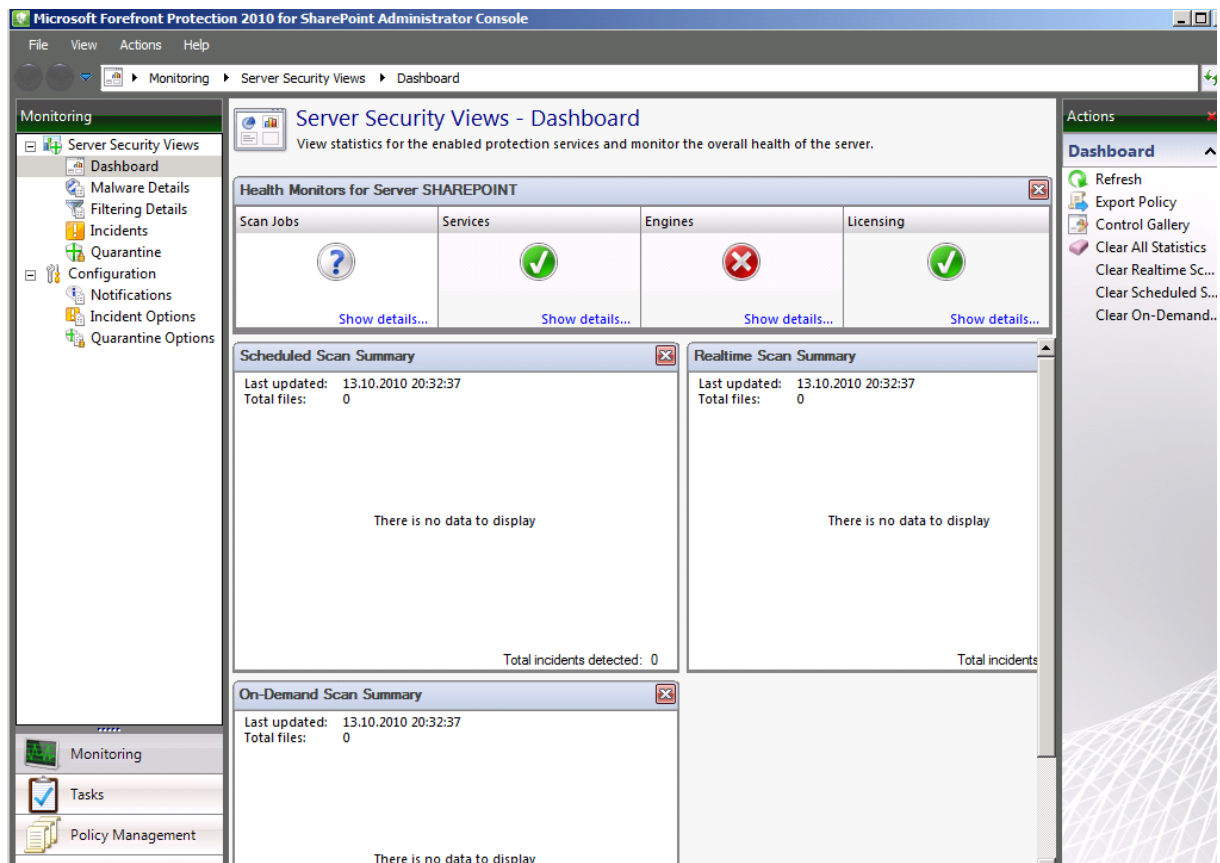
	Microsoft Forefront Server Protection Controller	Registers the platform with all available Forefront...
	Microsoft Forefront Server Protection Controller for SharePoint	Starts and manages scan jobs and applies engine...
	Microsoft Forefront Server Protection Eventing Service	Retrieves required settings from SharePoint. This...
	Microsoft Forefront Server Protection Mail Pickup Service	Processes Forefront Server Protection events, in...
	Microsoft Forefront Server Protection VSS Writer Service	Delivers messages generated by Forefront Serve...

Forefront Protection fuer Sharepoint Konsole

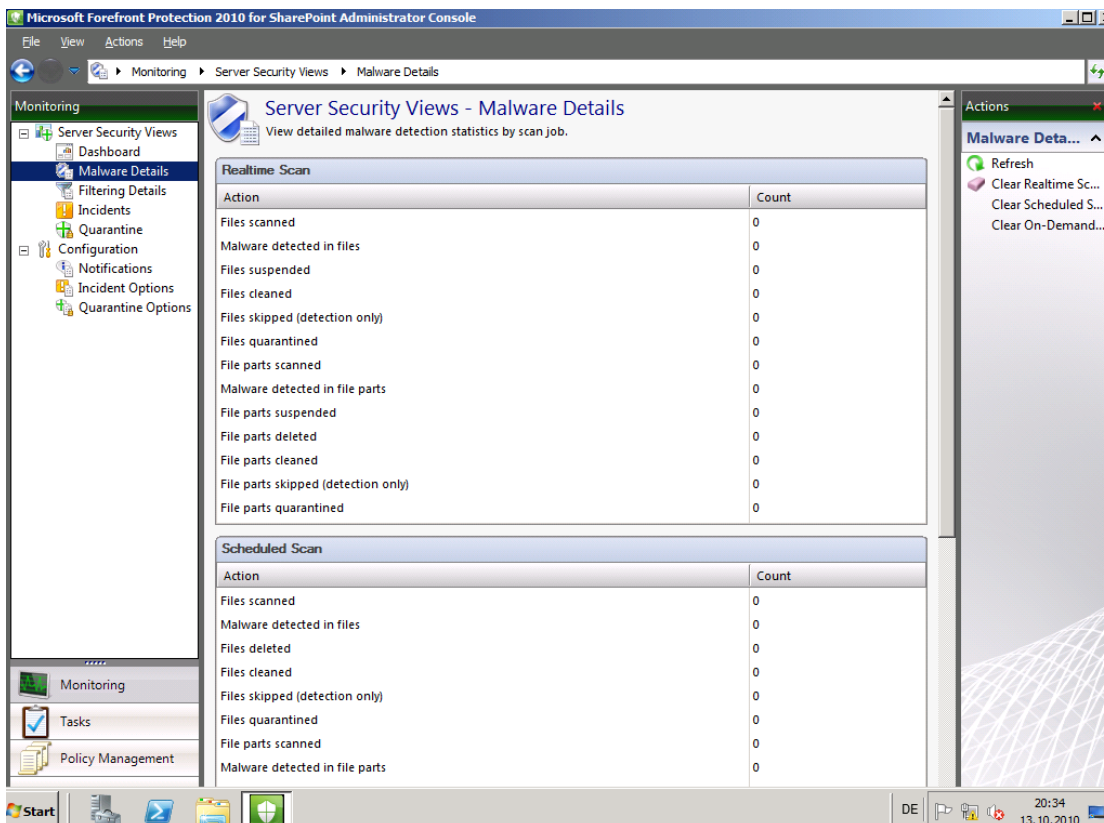
Eval Lizenz



Sieht ja erst mal wie die FSE Konsole aus



Malware Details



Filter Details

The screenshot displays the Microsoft Forefront Protection 2010 for SharePoint Administrator Console. The left-hand navigation pane is expanded to 'Monitoring', which contains a tree view with 'Server Security Views' selected. Under 'Server Security Views', the following items are listed: Dashboard, Malware Details, Filtering Details (selected), Incidents, Quarantine, Configuration, Notifications, Incident Options, and Quarantine Options. The main content area is titled 'Server Security Views - Filtering Details' and includes the subtitle 'View detailed filtering detection statistics by scan job.' It features two tables: 'Realtime Scan' and 'Scheduled Scan'. Both tables have three columns: 'Action', 'File Filter', and 'Keyword Filter'. The 'Realtime Scan' table lists 14 actions, all with a value of 0 in both the 'File Filter' and 'Keyword Filter' columns. The 'Scheduled Scan' table lists 14 actions, also all with a value of 0 in both columns. On the right side, an 'Actions' pane is visible with a 'Filtering Details' section containing 'Refresh', 'Clear Realtime Sc...', 'Clear Scheduled S...', and 'Clear On-Demand...'. The Windows taskbar at the bottom shows the Start button, several application icons, and the system clock indicating 20:34 on 13.10.2010.

Action	File Filter	Keyword Filter
Files scanned	0	0
Files containing filter matches	0	0
Files suspended due to filter matches	0	0
Files skipped due to filter matches (detection o...	0	0
Filter matches quarantined as entire files	0	0
File parts scanned	0	0
File parts containing filter matches	0	0
File parts suspended due to filter matches	0	0
File parts skipped due to filter matches (detecti...	0	0
Filter matches quarantined as individual file parts	0	0

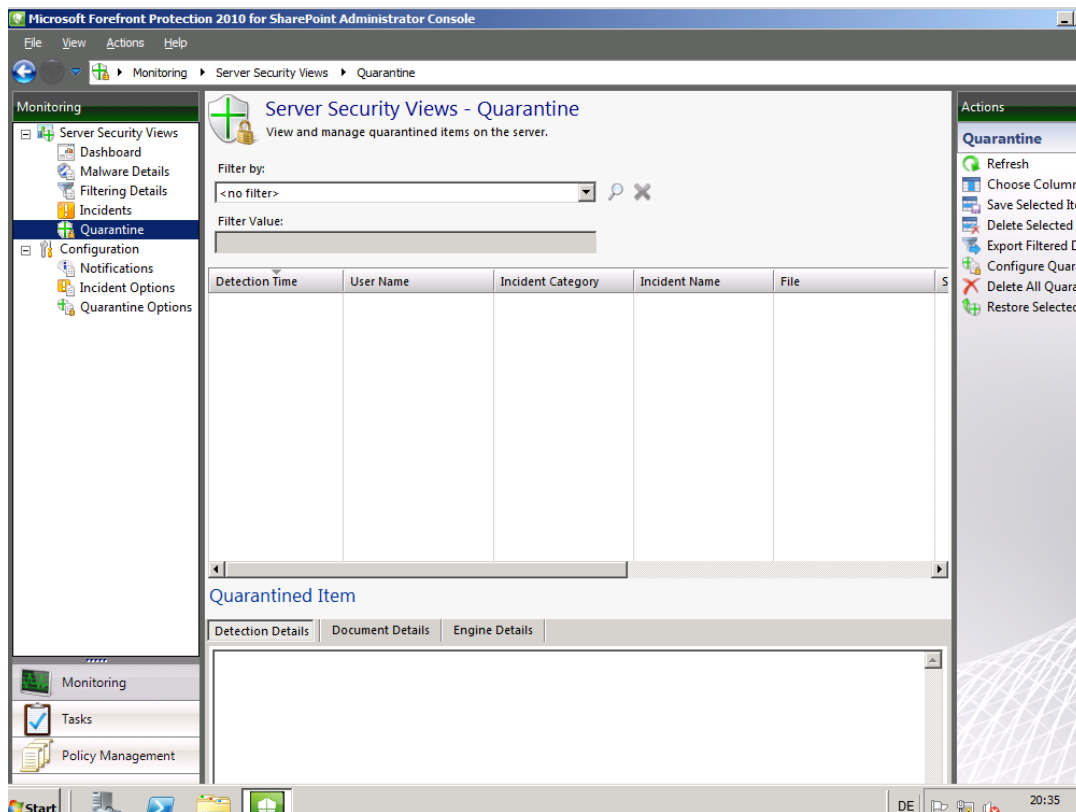
Action	File Filter	Keyword Filter
Files scanned	0	0
Files containing filter matches	0	0
Files deleted due to filter matches	0	0
Files skipped due to filter matches (detection o...	0	0
Filter matches quarantined as entire files	0	0
File parts scanned	0	0
File parts containing filter matches	0	0
File parts deleted due to filter matches	0	0
File parts skipped due to filter matches (detecti...	0	0
Filter matches quarantined as individual file parts	0	0

Incidents

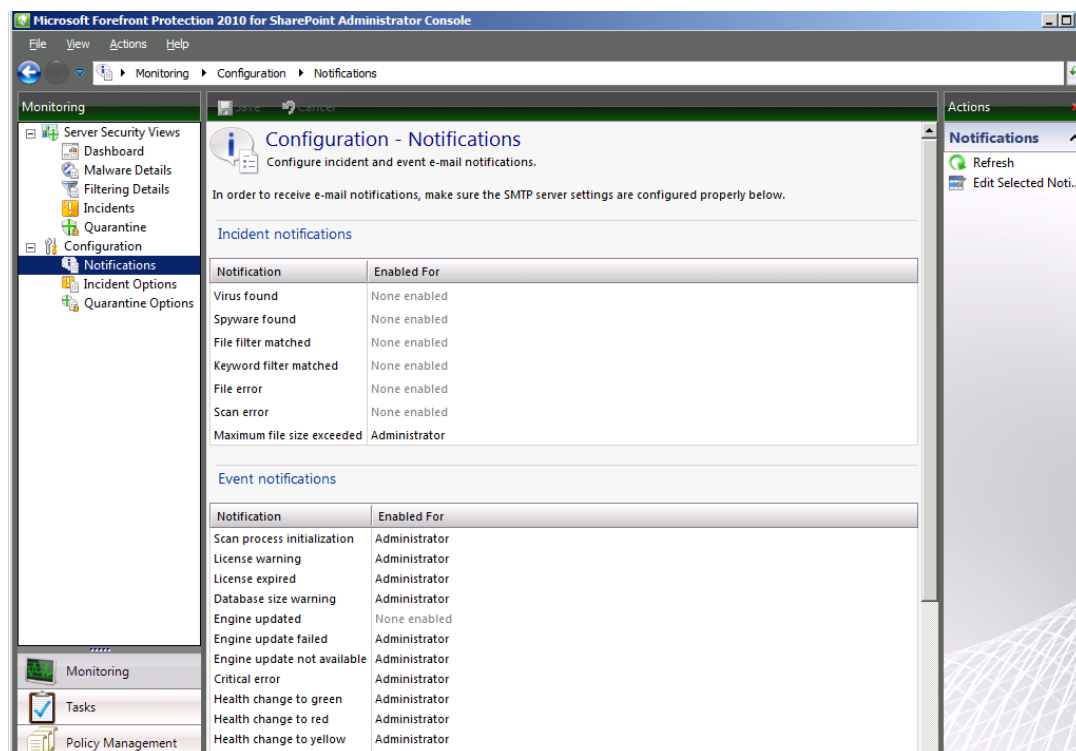
The screenshot displays the Microsoft Forefront Protection 2010 for SharePoint Administrator Console with the 'Incidents' view selected. The left-hand navigation pane shows 'Monitoring' expanded, with 'Server Security Views' selected and 'Incidents' highlighted. The main content area is titled 'Server Security Views - Incidents' with the subtitle 'View and manage incidents detected on the server.' It includes a 'Filter by:' dropdown menu set to '<no filter>' and a 'Filter Value:' text box. Below these is a table with six columns: 'Detection Time', 'State', 'Incident Category', 'Incident Name', 'File', and 'SharePoint Pa'. The table is currently empty. At the bottom of the main area, there is a section titled 'Incident Details' with three tabs: 'Detection Details', 'Document Details', and 'Engine Details'. On the right side, an 'Actions' pane is visible with an 'Incidents' section containing 'Refresh', 'Choose Columns', 'Delete Selected It...', 'Export Filtered Data', 'Configure Inciden...', and 'Delete All Incident...'. The Windows taskbar at the bottom shows the Start button, application icons, and the system clock indicating 20:34 on 13.10.2010.

Detection Time	State	Incident Category	Incident Name	File	SharePoint Pa
----------------	-------	-------------------	---------------	------	---------------

Quarantaine



Informiert sein



Wen?

Edit Notification

☐ Enabled

To:
 Cc:
 Bcc:
 Subject: %Product% detected a virus

Message body:
 %Product% has detected a virus.
 Virus name: "%Malware%"
 File name: "%File%"
 State: "%State%"
 Location: "%Company%%Server%"
 Scan job: "%ScanJob%"

On Demand Scan – Scan Targets

Microsoft Forefront Protection 2010 for SharePoint Administrator Console

File View Actions Help

Tasks > Task Library > On-Demand Scan

Task Library - On-Demand Scan
Use the on-demand scan to quickly scan selected SharePoint sites.

☒ Enable c
 Scan target
 Note: Scan
☐ All
☒ Select
 Scan engine
☐ Scan wit
☒ Scan wit
☐ Scan wit
☐ Scan wit
 Scan actions

Select Scan Targets

Select the sites to be scanned.

Tree View Search View

Expand All

Data loading is in progress. Please wait while the whole site structure is being loaded...

To scan specific

OK Cancel

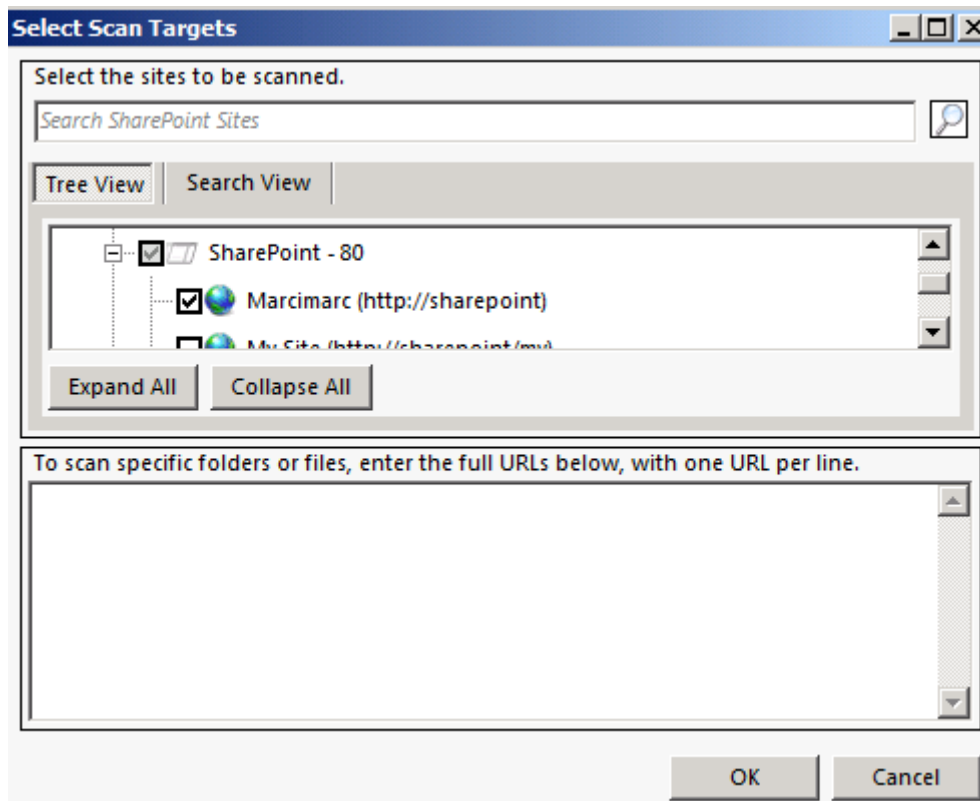
Detection	Action	Quarantine Files
Virus	Skip detect	Yes

This scan is configured to run with the Skip detect action. Be aware that any filter matches use the action setting for that filter. It is recommended that you review your filter settings.

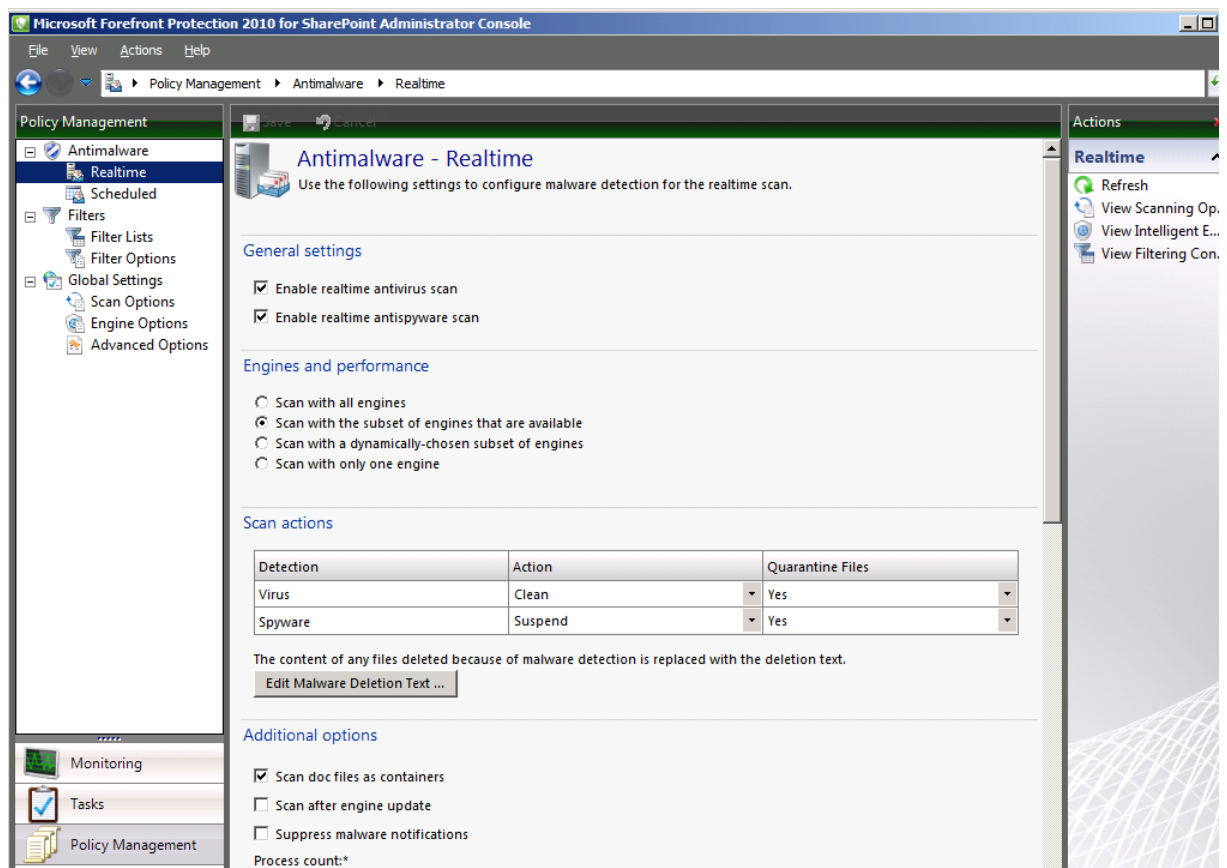
The content of any filter deleted because of malware detection is replaced with the deletion text

Monitoring
Tasks
Policy Management

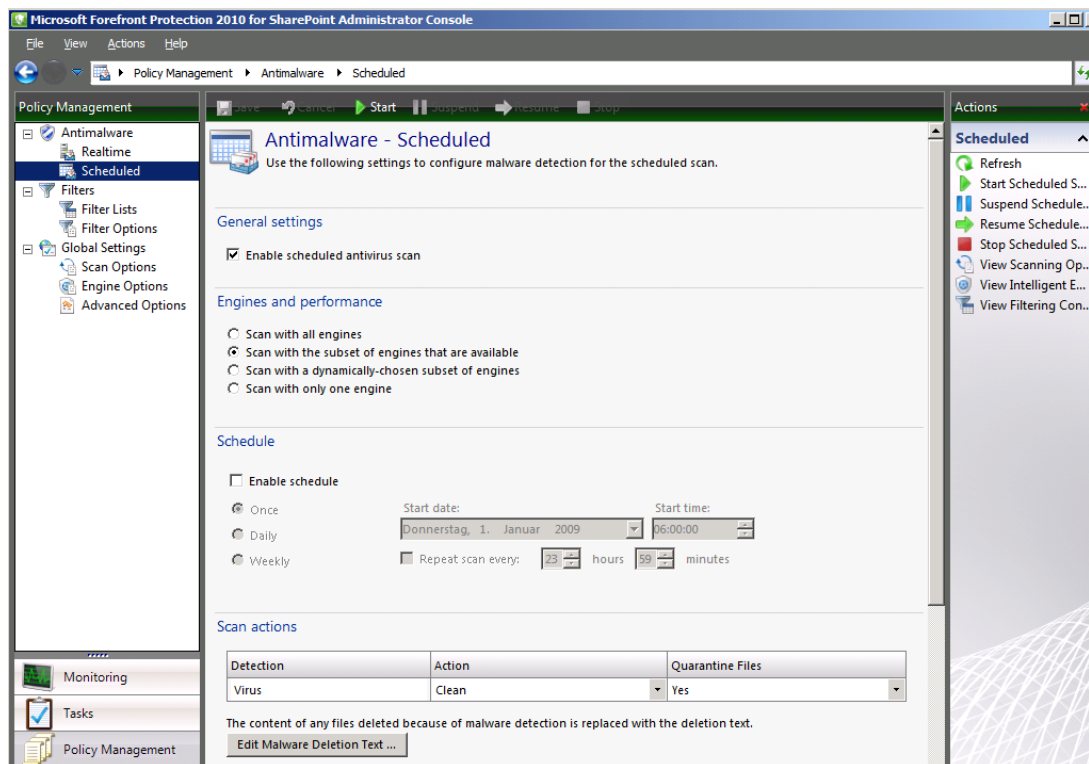
On-Demand S...



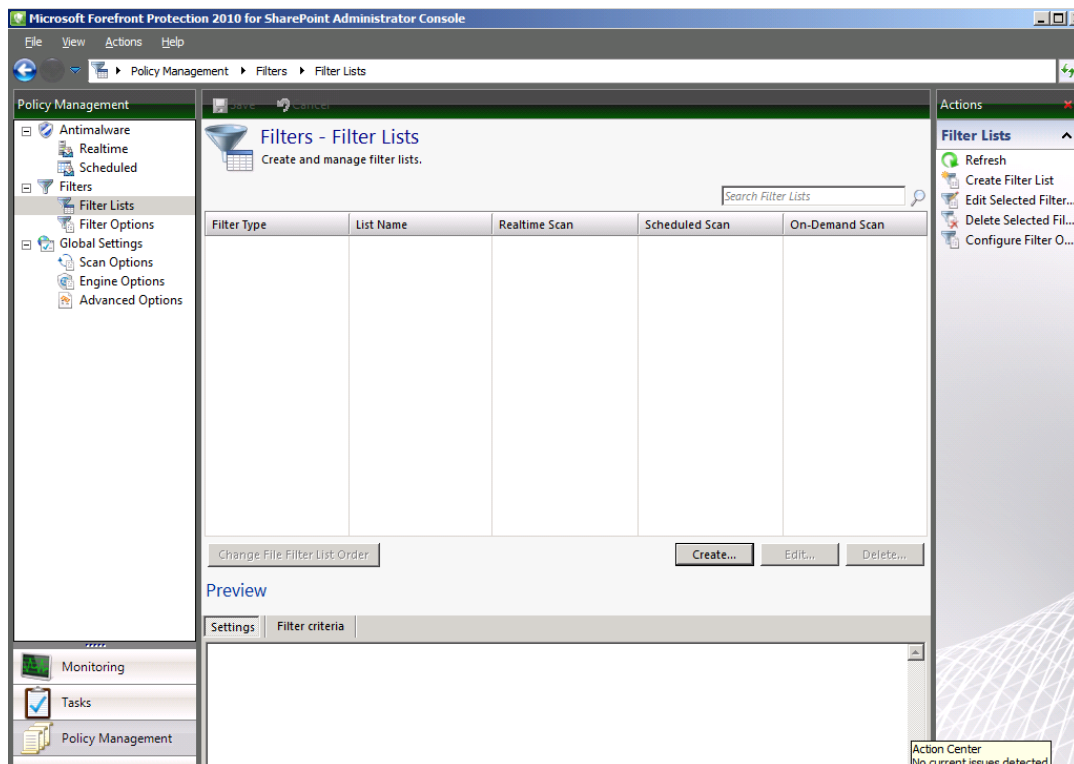
Policy Management

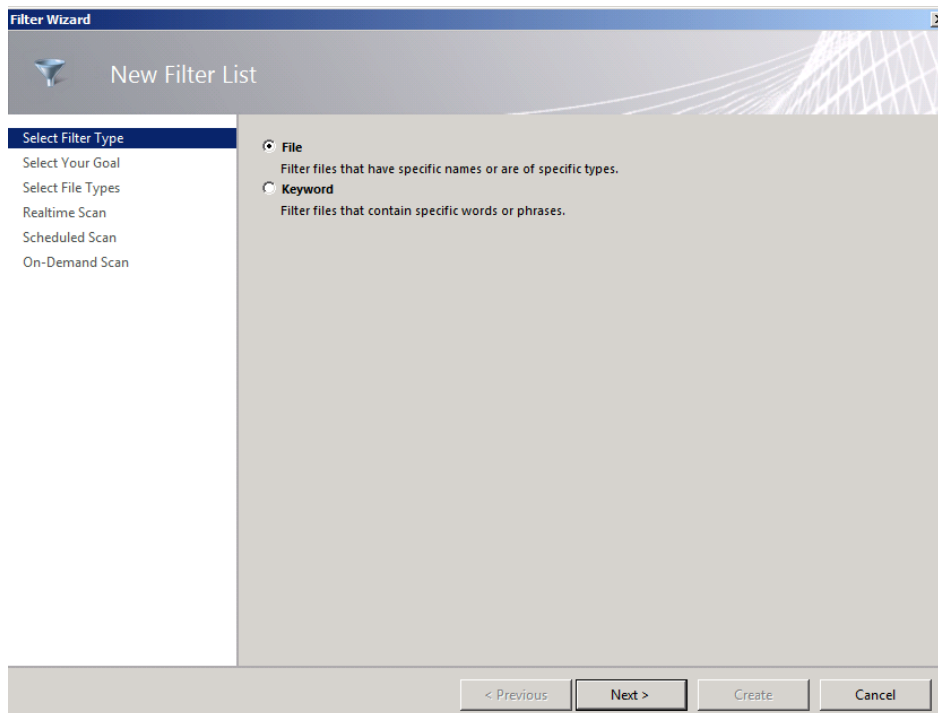


Scheduled Scan

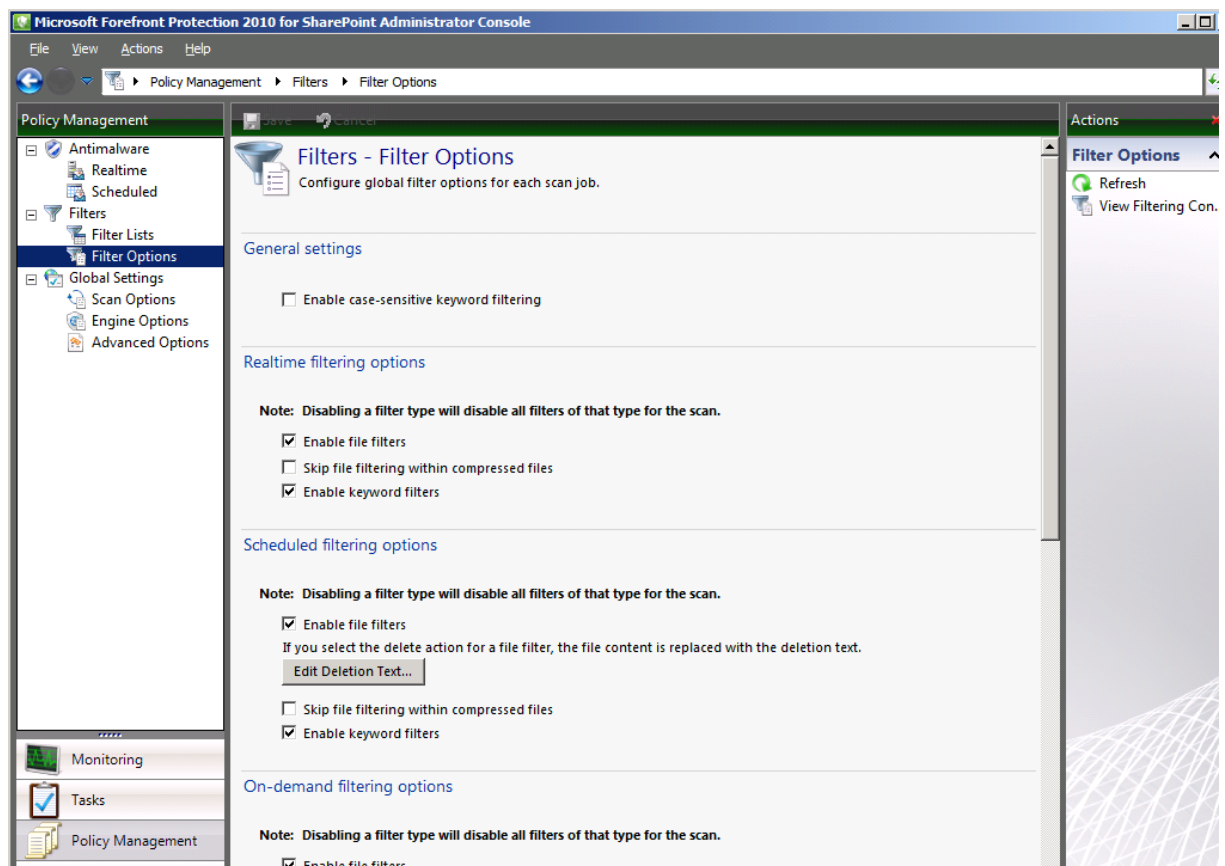


Filterlisten

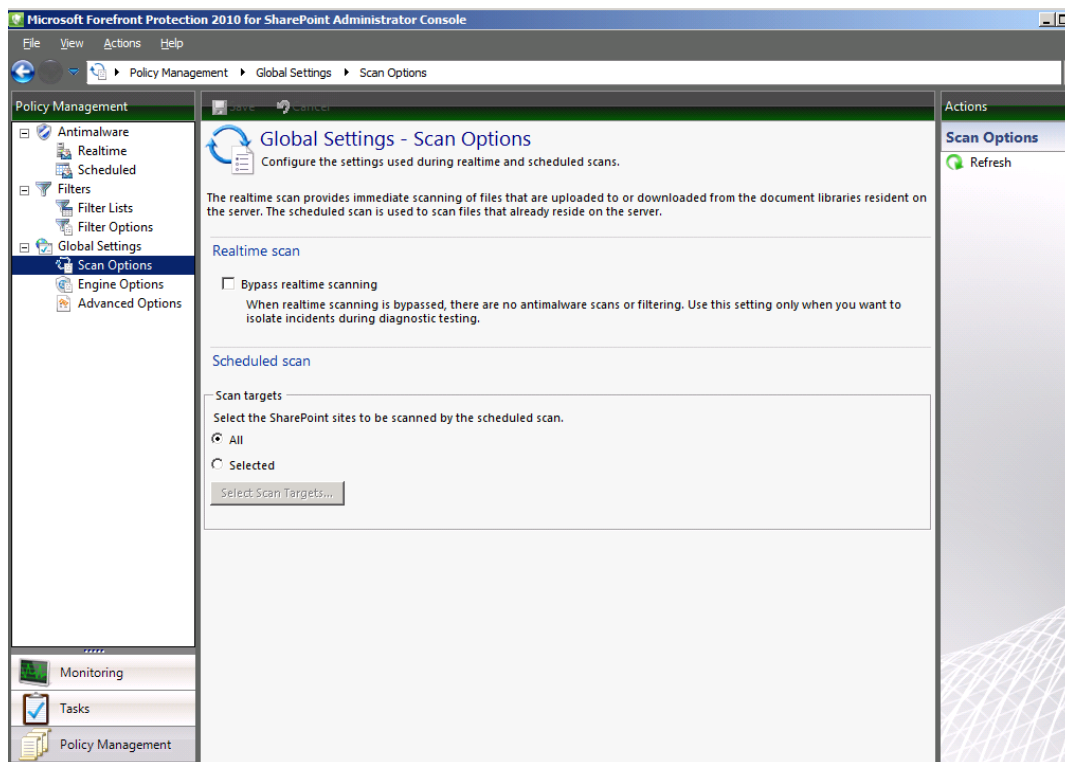




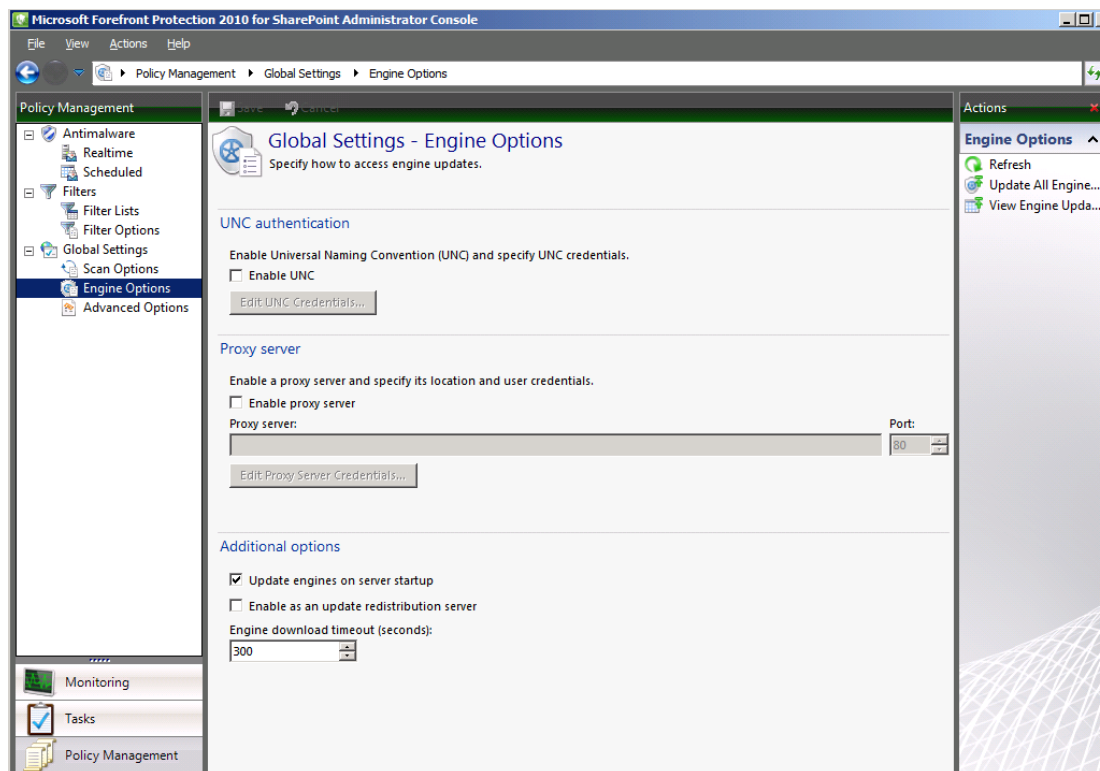
Filter Options



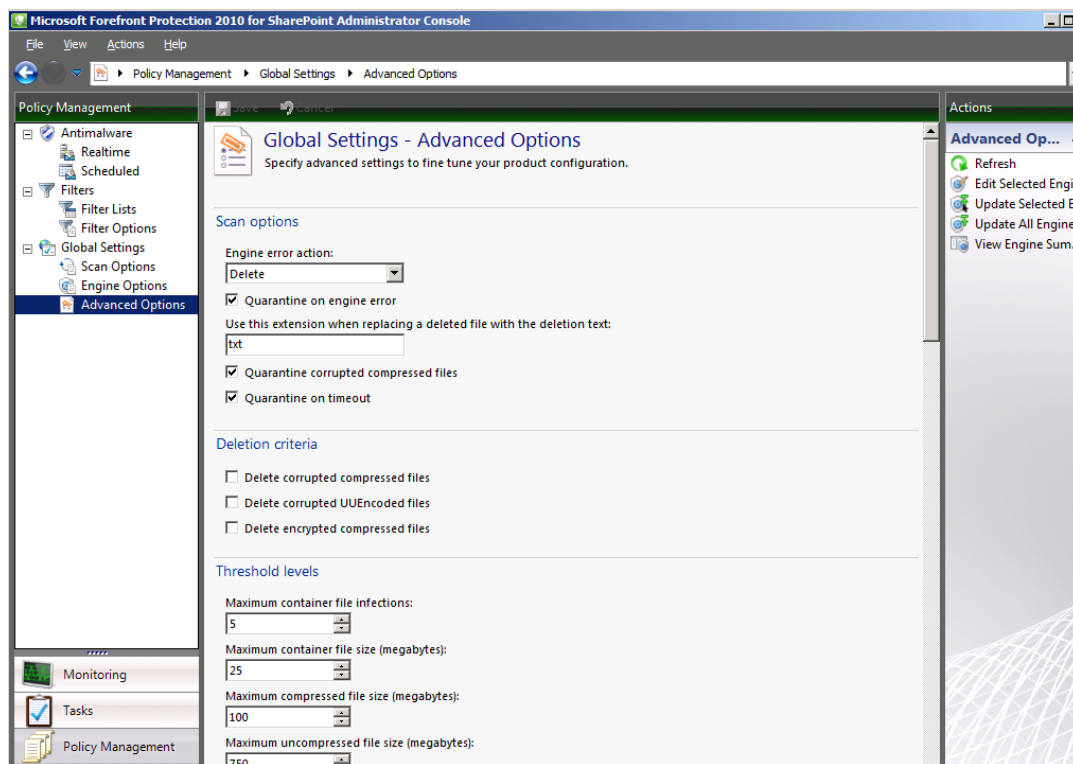
Scan Options



Engine Options



Erweiterte Optionen



Scan Engines – na endlich 😊

Intelligent Engine Management

Microsoft Forefront Protection 2010 for SharePoint manages engine selections and scheduled updates for the best protection. It is recommended that you leave engine management set to automatic. To disable engines for specific scans, or to change the engine update schedule, change engine management to manual mode and make your selections below.

Engine management:

Engine selection

Engine	Realtime	Scheduled	On-Demand
Norman Virus Control	Enabled	Enabled	Enabled
Microsoft Antimalware Engine	Enabled	Enabled	Enabled
Authentium Command Antivirus Engine	Enabled	Enabled	Enabled
VirusBuster Antivirus Scan Engine	Enabled	Enabled	Enabled
Kaspersky Antivirus Technology	Enabled	Enabled	Enabled

Update scheduling

Engine	Category	Updating	Schedule
Norman Virus Control	Antimalware	Enabled	Daily starting on 13.10.2010 at 20
Microsoft Antimalware Engine	Antimalware	Enabled	Daily starting on 13.10.2010 at 20
Authentium Command Antivirus Engine	Antimalware	Enabled	Daily starting on 13.10.2010 at 20
VirusBuster Antivirus Scan Engine	Antimalware	Enabled	Daily starting on 13.10.2010 at 20
Kaspersky Antivirus Technology	Antimalware	Enabled	Daily starting on 13.10.2010 at 20

Edit Selected Engines...

Engine Summary – Update Failed, weil kein Internet in der VM im Hotel ☹

Engine Summary						
Data Refreshed: 13.10.2010 20:43						
Engine	In Use	Updates Enabl...	Engine Vers...	Definition Versi...	Last Update	Last Check
Authentium Command Antivirus En...	Yes	Yes	0.0.0	0.0.0		Failed at 13.10.2010 20:42
Kaspersky Antivirus Technology	Yes	Yes	0.0.0	0.0.0		Failed at 13.10.2010 20:42
Microsoft Antimalware Engine	Yes	Yes	1.1.5605.0	1.79.199.0		Failed at 13.10.2010 20:42
Norman Virus Control	Yes	Yes	0.0.0	0.0.0		Failed at 13.10.2010 20:42
VirusBuster Antivirus Scan Engine	Yes	Yes	0.0.0	0.0.0		Failed at 13.10.2010 20:42

Fazit: Wer Forefront Security fuer Exchange administrieren kann, kann auch Forefront Security fuer Sharepoint administrieren