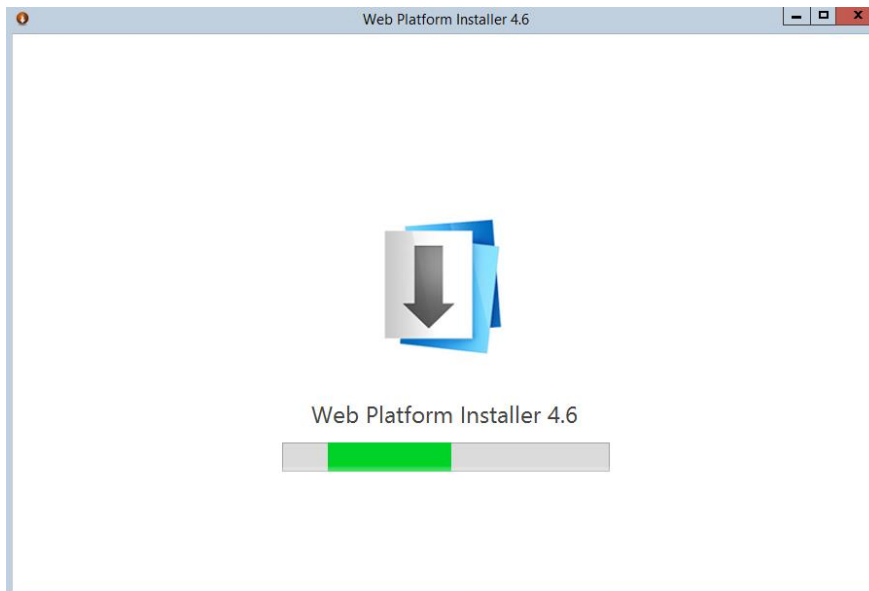


Microsoft Azure Powershell

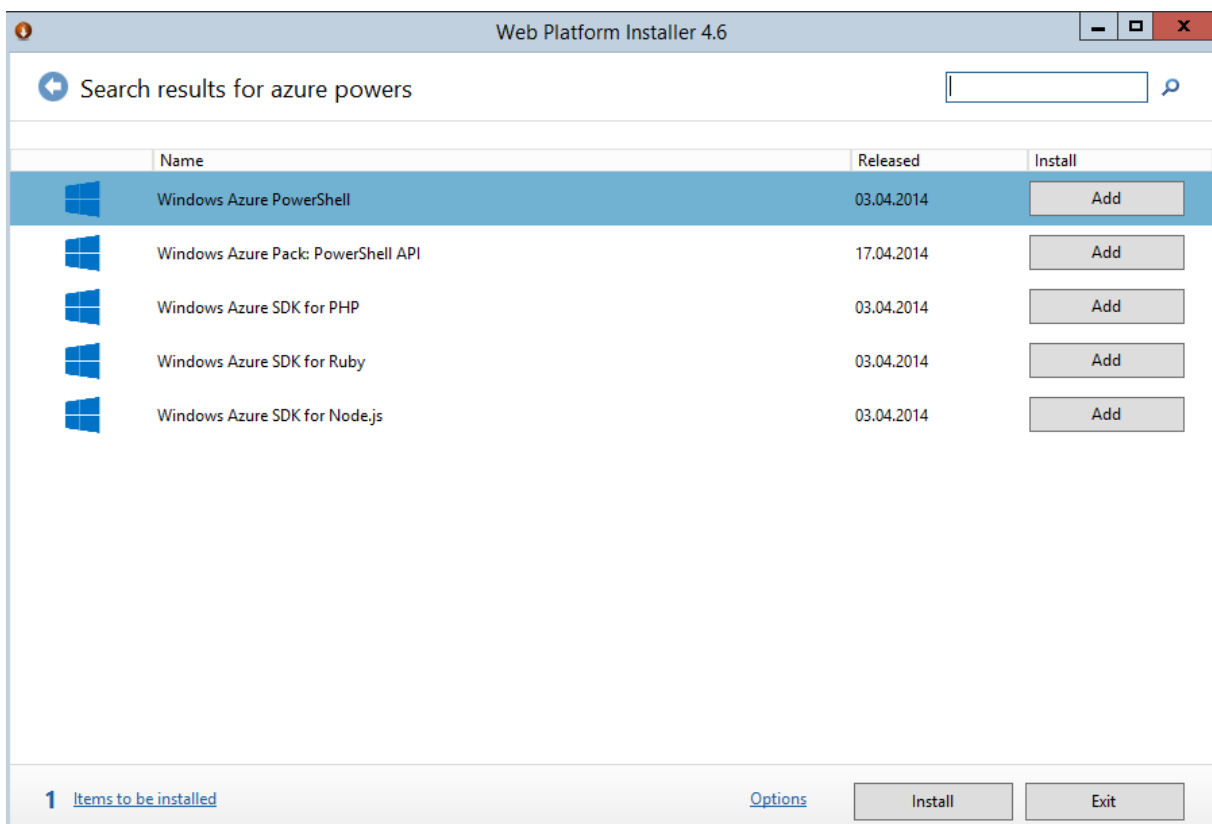
Als erstes ueber den Web Platform Installer die Azure Powershell downloaden

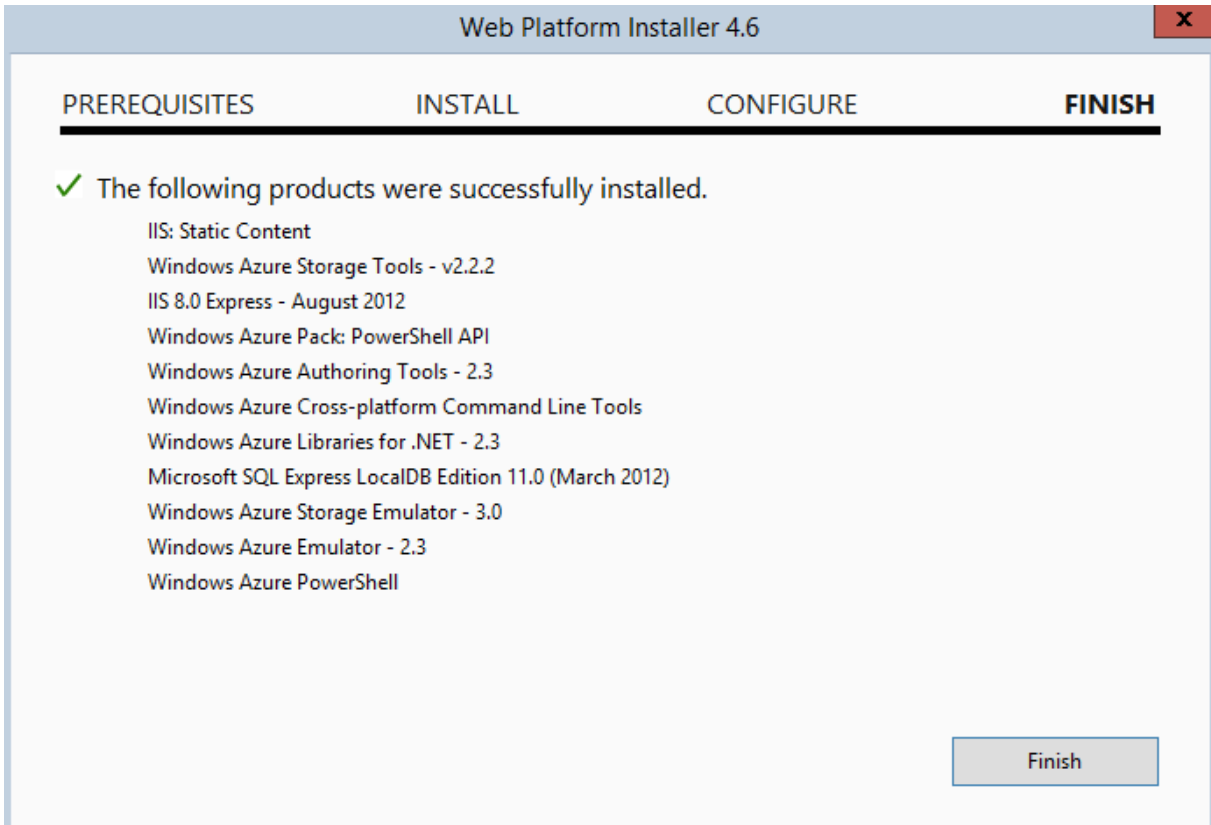
<https://github.com/Azure/azure-sdk-tools>

Microsoft Web Platform Installer 4.6 installieren

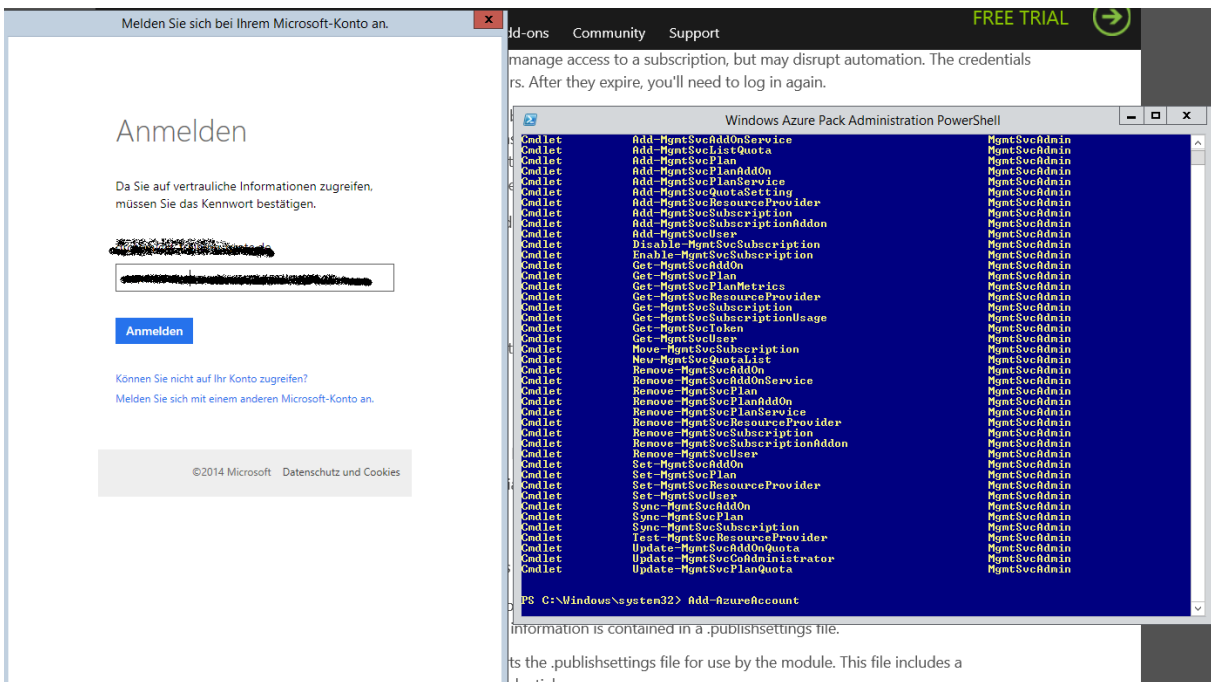


Auswahl der Komponenten





Azure Account hinzufuegen



Subscription anzeigen

```
Windows Azure Pack Administration PowerShell
PS C:\Windows\system32> Add-AzureAccount
PS C:\Windows\system32> Get-AzureAccount

Name                                     ActiveDirectories
-----
grote@grote.de                          << ActiveDirectoryTenantId = [REDACTED]4...

PS C:\Windows\system32> Get-AzureSubscription

SubscriptionName      : MSDN-Plattformen
SubscriptionId        : [REDACTED]
ServiceEndpoint       : https://management.core.windows.net/
ResourceManagerEndpoint : https://management.azure.com/
GalleryEndpoint       : https://gallery.azure.com/
ActiveDirectoryEndpoint : https://login.windows.net/
ActiveDirectoryTenantId : [REDACTED]
IsDefault             : False
Certificate           :
CurrentStorageAccountName :
ActiveDirectoryUserId   : grote@grote.de
TokenProvider         : Microsoft.WindowsAzure.Commands.Utilities.Common.Authentication.Ada
                        lTokenProvider


SubscriptionName      : Visual Studio Premium bei MSDN
SubscriptionId        : [REDACTED]
ServiceEndpoint       : https://management.core.windows.net/
ResourceManagerEndpoint : https://management.azure.com/
GalleryEndpoint       : https://gallery.azure.com/
ActiveDirectoryEndpoint : https://login.windows.net/
```

Azure Abonentendatei anzeigen und installieren

```
Windows Azure Pack Administration PowerShell
PS C:\Windows\system32> Get-AzurePublishSettingsFile
PS C:\Windows\system32>
```

Download der Datei und installieren des Files

Microsoft Azure



Ihre Abonnementdatei wird generiert. Der Download beginnt in Kürze.

Diese Datei enthält sichere Anmeldeinformationen und weitere Informationen zu den Abonnements, die Sie in Ihrer Entwicklungsumgebung verwenden können. Sollte der Download nicht automatisch gestartet werden, klicken Sie [hier](#).

- 1 Für Windows Azure-Vorschaufeatures anmelden
Melden Sie sich für [Windows Azure-Vorschaufeatures an](#), an denen Sie interessiert sind.
- 2 Lokale Kopie der publishSettings-Datei speichern
Warnung Diese Datei enthält ein codiertes Verwaltungszertifikat, das die Anmeldedaten zur Verwaltung Ihres Abonnements und zugehöriger Dienste enthält. Speichern Sie diese Datei an einem sicheren Speicherort, oder löschen Sie sie nach der Verwendung.
- 3 Die publishSettings-Datei importieren
Folgenden Befehl ausführen
`Import-AzurePublishSettingsFile`
- 4 Cloud-Dienst veröffentlichen
Folgenden Befehl ausführen
`Publish-AzureServiceProject -ServiceName`



Import per PS

```
PS C:\Windows\system32> Import-AzurePublishSettingsFile 'C:\temp\MSDN-Plattformen-Visual Studio Premium bei MSDN-5-5-2014-credentials.publishsettings'  
PS C:\Windows\system32>
```

Zertifikat

The screenshot shows the Windows Certificate Manager interface. On the left, the 'Certificates (Local Computer)' tree is expanded to 'Certificates - Current User' > 'Personal' > 'Certificates'. The main pane displays a list of certificates with the following columns: Issued To, Issued By, Expiration Date, Intended Purposes, Friendly Name, and Status. A 'Certificate' dialog box is open over the list, showing details for a certificate issued by 'Windows Azure Tools'.

Issued To	Issued By	Expiration Date	Intended Purposes	Friendly Name	Status
[Redacted]	DO_NOT_TRUST_FiddlerRoot	26.09.2023	Server Authenticati...	<None>	User
Administrator	RootCA	06.04.2013	Encrypting File Syst...		Sma
Administrator	RootCA	06.04.2013	Client Authenticati...	[Redacted]	
api.facebook.com	DO_NOT_TRUST_FiddlerRoot	26.09.2023	Server Authenticati...	<None>	
[Redacted]	bsa-portal-CA	23.04.2017	<All>	<None>	
directory.services.live.com	DO_NOT_TRUST_FiddlerRoot	26.09.2023	Server Authenticati...	<None>	
DO_NOT_TRUST_FiddlerRoot	DO_NOT_TRUST_FiddlerRoot	26.09.2023	Server Authenticati...	<None>	
[Redacted]	StartCom Class 1 Primary Interme...	13.10.2014	Client Authenticati...	[Redacted]	
[Redacted]	TC TrustCenter Class 1 L1 CA IX	25.11.2013	Client Authenticati...	<None>	
[Redacted]	TC TrustCenter Class 1 L1 CA IX	12.03.2012	Client Authenticati...	<None>	
[Redacted]	TC TrustCenter Class 1 L1 CA IX	17.01.2013	Client Authenticati...	<None>	
roaming.officeapps.live.com	DO_NOT_TRUST_FiddlerRoot	26.09.2023	Server Authenticati...	<None>	
RootCA	RootCA	30.09.2017	<All>	<None>	
StartCom Certification Authority	StartCom Certification Authority	17.09.2036	<All>	StartCom Certificati...	
StartCom Class 1 Primary Inter...	StartCom Certification Authority	24.10.2017	<All>	StartCom Class 1 Pr...	
TC TrustCenter Class 1 L1 CA IX	TC TrustCenter Universal CA I	31.12.2025	<All>	<None>	
TC TrustCenter Universal CA I	TC TrustCenter Universal CA I	01.01.2026	Server Authenticati...	TC TrustCenter Uni...	
Windows Azure Tools	Windows Azure Tools	05.05.2015	<All>	Visual Studio Premi...	
Windows Azure Tools	Windows Azure Tools	05.05.2015	<All>	MSDN-Plattformen...	
[Redacted]	[Redacted]	9.2023	Server Authenticati...	<None>	
[Redacted]	[Redacted]	5.2110	<All>	<None>	

The 'Certificate' dialog box shows the following details:

Field	Value
Version	V3
Serial number	1a e3 [Redacted] 49 ef ...
Signature algorithm	sha1RSA
Signature hash algorithm	sha1
Issuer	Windows Azure Tools
Valid from	Montag, 5. Mai 2014 19:31:59
Valid to	Dienstag, 5. Mai 2015 19:31:59
Subject	Windows Azure Tools

Subscription setzen

```

PS C:\Windows\system32> Set-AzureSubscription

cmdlet Set-AzureSubscription at command pipeline position 1
Supply values for the following parameters:
(Type ?? for Help.)
SubscriptionName: 44cb25c7-53[Redacted]abb1r0f1
PS C:\Windows\system32> Select-AzureSubscription 44cb25c7-53[Redacted]abb1r0f1
  
```

Storage Location ermitteln

```
Windows Azure Pack Administration PowerShell

PS C:\Windows\system32> Get-AzureLocation

AvailableServices : <Compute, Storage, PersistentUMRole, HighMemory>
DisplayName       : East Asia
Name              : East Asia
OperationDescription : Get-AzureLocation
OperationId       : acb4dd0b-3851-9ba2-afff-65cf458537d5
OperationStatus   : Succeeded

AvailableServices : <Compute, Storage, PersistentUMRole, HighMemory>
DisplayName       : Southeast Asia
Name              : Southeast Asia
OperationDescription : Get-AzureLocation
OperationId       : acb4dd0b-3851-9ba2-afff-65cf458537d5
OperationStatus   : Succeeded

AvailableServices : <Compute, Storage, PersistentUMRole, HighMemory>
DisplayName       : North Europe
Name              : North Europe
OperationDescription : Get-AzureLocation
OperationId       : acb4dd0b-3851-9ba2-afff-65cf458537d5
OperationStatus   : Succeeded

AvailableServices : <Compute, Storage, PersistentUMRole, HighMemory>
DisplayName       : West Europe
Name              : West Europe
OperationDescription : Get-AzureLocation
OperationId       : acb4dd0b-3851-9ba2-afff-65cf458537d5
OperationStatus   : Succeeded

AvailableServices : <Compute, Storage, PersistentUMRole, HighMemory>
DisplayName       : East US
Name              : East US
OperationDescription : Get-AzureLocation
OperationId       : acb4dd0b-3851-9ba2-afff-65cf458537d5
OperationStatus   : Succeeded

AvailableServices : <Compute, Storage, PersistentUMRole, HighMemory>
DisplayName       : West US
Name              : West US
OperationDescription : Get-AzureLocation
OperationId       : acb4dd0b-3851-9ba2-afff-65cf458537d5
OperationStatus   : Succeeded
```

Get-AzureStorageAccount

```
PS C:\Windows\system32> Get-AzureStorageAccount

StorageAccountDescription : Implicitly created storage service
AffinityGroup              :
Location                   : North Europe
GeoReplicationEnabled      : True
GeoPrimaryLocation        : North Europe
GeoSecondaryLocation       : West Europe
Label                      : portalvhds1d0hkf15v3t07
StorageAccountStatus       : Created
StatusOfPrimary            :
StatusOfSecondary          :
Endpoints                  : <http://portalvhds1d0hkf15v3t07.blob.core.windows.net/, http://portalvhds1d0hkf15v3t07.queue.core.windows.net/,
                             http://portalvhds1d0hkf15v3t07.table.core.windows.net/>
StorageAccountName         :
OperationDescription       : Get-AzureStorageAccount
OperationId                : 8efba56-380b-962a-a4d7-2e60d93742f7
OperationStatus            : Succeeded

PS C:\Windows\system32>
```

```
PS C:\Windows\system32> Set-AzureStorageAccount

cmdlet Set-AzureStorageAccount at command pipeline position 1
Supply values for the following parameters:
(Type '?' for Help.)
StorageAccountName: portalvhds1d0hkf15v3t07

OperationDescription      OperationId              OperationStatus
-----
Set-AzureStorageAccount  0c792658-3d92-987d-a94b-f4a98dca9edc Succeeded

PS C:\Windows\system32>
```

Den Azure Subscriptions zuordnen

```
PS C:\Windows\system32> Set-AzureSubscription -SubscriptionName "msdn platform" -CurrentStorageAccountName (Get-AzureStorageAccount).Label -PassThru
True
PS C:\Windows\system32>

PS C:\Windows\system32> Get-AzureSubscription | Set-AzureSubscription -CurrentStorageAccountName portalvhds1d0hkf15v3t07
```

Neue Azure VM

Neue Affinity Group (nicht zwingend erforderlich)

```
Windows Azure Pack Administration PowerShell
PS C:\Windows\system32> New-AzureAffinityGroup -Name "HomeSweetHome" -Location "North Europe"

OperationDescription      OperationId      OperationStatus
-----
New-AzureAffinityGroup    07544d88-ae96-9ad2-b5dd-2a4ed6cd1b54    Succeeded

PS C:\Windows\system32>
```

Neuer Service (wenn nicht vorhandener Service genutzt werden soll)

```
Windows Azure Pack Administration PowerShell
PS C:\Windows\system32> New-AzureService -ServiceName "Marcinarc01" -AffinityGroup "HomeSweetHome"

OperationDescription      OperationId      OperationStatus
-----
New-AzureService          6d459476-069e-90f8-a8e3-e2fe13ce2ffb    Succeeded

PS C:\Windows\system32>
```

Was fuer ein Image haetten wir denn gerne? ...

```
Windows Azure Pack Administration PowerShell
PS C:\Windows\system32> Get-AzureVMImage | select ImageName

ImageName
-----
03f55de727f546a1b29d1b8d66be687a_Visual-Studio-2013-Premium-Update2-AzureSDK-2.3-WS2012
03f55de727f546a1b29d1b8d66be687a_Visual-Studio-2013-Professional-Update2-AzureSDK-2.3-WS2012
03f55de727f546a1b29d1b8d66be687a_Visual-Studio-2013-Ultimate-Update2-AzureSDK-2.3-WS2012
03f55de727f546a1b29d1b8d66be687a_Visual-Studio-2013-Ultimate-Update2-AzureSDK-2.3-Win8.1-N-x64
03f55de727f546a1b29d1b8d66be687a_Visual-Studio-2013-Ultimate-Update2-AzureSDK-2.3-Win8.1-N-x64
03f55de727f546a1b29d1b8d66be687a_Windows-7-Enterprise-N-x64-en-us-201405.01
03f55de727f546a1b29d1b8d66be687a_Windows-7-Enterprise-x64-en-us-201405.01
03f55de727f546a1b29d1b8d66be687a_Windows-8.1-Enterprise-N-x64-en-us-201405.01
03f55de727f546a1b29d1b8d66be687a_Windows-8.1-Enterprise-x64-en-us-201405.01
9a03679de0e6e4e0e94fb8d7f43c72ff1_Dynamics-NAV-2013R2-W1-RTM-201402NB_01-127GB
9a03679de0e6e4e0e94fb8d7f43c72ff1_Dynamics-NAV-2013R2-W1-RTM-201402NB_01-127GB
2dd70f524ff4e7e88725b069228c4ac_DynGP2013Dev
0b11de9248dd4d87b18621318e037d37_RightImage-CentOS-6.2-x64-v5.8.0.1
0b11de9248dd4d87b18621318e037d37_RightImage-CentOS-6.3-x64-v5.8.8
0b11de9248dd4d87b18621318e037d37_RightImage-CentOS-6.3-x64-v5.8.8.5
0b11de9248dd4d87b18621318e037d37_RightImage-CentOS-6.3-x64-v5.8.8.6
0b11de9248dd4d87b18621318e037d37_RightImage-CentOS-6.3-x64-v5.8.8.7
0b11de9248dd4d87b18621318e037d37_RightImage-CentOS-6.3-x64-v5.8.8.8
0b11de9248dd4d87b18621318e037d37_RightImage-CentOS-6.3-x64-v5.8.8.9
0b11de9248dd4d87b18621318e037d37_RightImage-CentOS-6.4-x64-v13.4
0b11de9248dd4d87b18621318e037d37_RightImage-CentOS-6.4-x64-v13.5.0.1
0b11de9248dd4d87b18621318e037d37_RightImage-CentOS-6.4-x64-v13.5.0.2
0b11de9248dd4d87b18621318e037d37_RightImage-CentOS-6.4-x64-v13.5.0.2
0b11de9248dd4d87b18621318e037d37_RightImage-CentOS-6.5-x64-v13.5.2
0b11de9248dd4d87b18621318e037d37_RightImage-CentOS-6.5-x64-v13.5.3
0b11de9248dd4d87b18621318e037d37_RightImage-Ubuntu-12.04-x64-v13.4
0b11de9248dd4d87b18621318e037d37_RightImage-Ubuntu-12.04-x64-v13.5.0.1
0b11de9248dd4d87b18621318e037d37_RightImage-Ubuntu-12.04-x64-v13.5.2
0b11de9248dd4d87b18621318e037d37_RightImage-Ubuntu-12.04-x64-v13.5.3
0b11de9248dd4d87b18621318e037d37_RightImage-Ubuntu-12.04-x64-v5.8.8
0b11de9248dd4d87b18621318e037d37_RightImage-Ubuntu-12.04-x64-v5.8.8.5
0b11de9248dd4d87b18621318e037d37_RightImage-Ubuntu-12.04-x64-v5.8.8.7
0b11de9248dd4d87b18621318e037d37_RightImage-Ubuntu-12.04-x64-v5.8.8.8
0b11de9248dd4d87b18621318e037d37_RightImage-Ubuntu-12.04-x64-v5.8.8.8
0c0083a6d9a24f2d91800e52cad83950_JDK-1.6.0_71-0514-Win-GA
0c0083a6d9a24f2d91800e52cad83950_JDK-1.7.0_51-0514-Win-GA
0c0083a6d9a24f2d91800e52cad83950_JDK-1.8.0-0514-Win-GA
0c0083a6d9a24f2d91800e52cad83950_Oracle-Database-11.2.0.4.0-EE-0514-Win-GA
0c0083a6d9a24f2d91800e52cad83950_Oracle-Database-11.2.0.4.0-EE-WebLogic-10.3.6-EE-JDK-1.7.0_51-0514-Win-GA
0c0083a6d9a24f2d91800e52cad83950_Oracle-Database-11.2.0.4.0-SE-0514-Win-GA
0c0083a6d9a24f2d91800e52cad83950_Oracle-Database-11.2.0.4.0-SE-WebLogic-10.3.6-SE-JDK-1.7.0_51-0514-Win-GA
0c0083a6d9a24f2d91800e52cad83950_Oracle-Database-12.1.0.1.0-0514-EE-Win-GA
0c0083a6d9a24f2d91800e52cad83950_Oracle-Database-12.1.0.1.0-0514-SE-Win-GA
0c0083a6d9a24f2d91800e52cad83950_Oracle-Database-12.1.0.1.0-EE-WebLogic-12.1.2.0-EE-JDK-1.7.0_51-0514-Win-GA
0c0083a6d9a24f2d91800e52cad83950_Oracle-Database-12.1.0.1.0-SE-WebLogic-12.1.2.0-SE-JDK-1.7.0_51-0514-Win-GA
```

VM erstellen in BESTEHENDEN Service

```
Windows Azure Pack Administration PowerShell
PS C:\Windows\system32> $newVM = New-AzureVMConfig -Name "Azure-UM-PS-01" -InstanceSize ExtraSmall -ImageName a699494373c04fc0bc0f2bb1389d6106-Windows-Server-2012-R2-201404_01-en-us-127GB.vhdx -HostCaching ReadWrite -DiskLabel "03" -MediaLocation "http://eastus2.cloudimg.azure.com/37.blob.core.windows.net/vhds/Azure-UM-PS-01.vhdx" | Add-AzureProvisioningConfig -windows -AdminUsername "Grotten" -Password "Grotten"
PS C:\Windows\system32> New-AzureVM -UMs $newVM -ServiceName Grotten

OperationDescription      OperationId      OperationStatus
-----
New-AzureVM                ee197bf0-cd16-9602-a9b2-6ffc6cc38d27    Succeeded

PS C:\Windows\system32>
```

```
Windows Azure Pack Administration PowerShell
PS C:\Windows\system32> Get-AzureVM

ServiceName      Name      Status
-----
GROTEM            Azure-UM-PS-01      Provisioning
GROTEM            Azure-UM-PS-01      StoppedDeallocated

PS C:\Windows\system32>
```

VM wird erstellt

all items

NAME	TYPE	STATUS	SUBSCRIPTION
[REDACTED]	Storage Account	✓ Online	MSDN-Plattformen
GROTEM	Cloud service	⚠ Running	MSDN-Plattformen
Marcimarc	Web Site	✓ Running	Visual Studio Premium bei...
Standardverzeichnis	Directory	✓ Active	Shared by all Standardverz...
DPM	Backup Vault	✓ Active	MSDN-Plattformen
WS2012R2-GROTE	Backup Vault	✓ Active	MSDN-Plattformen
VMMR2-AZURE	Hyper-V Recovery Manager Vault	✓ Active	Visual Studio Premium bei...
Azure-VM-PS-01	Virtual machine	⏸ Starting	MSDN-Plattformen
GROTEM	Virtual machine	■ Stopped (Deallocated)	MSDN-Plattformen
office	RemoteApp service	✓ Active	Visual Studio Premium bei...

Start / Stop Azure-VM

```

Windows Azure Pack Administration PowerShell
PS C:\Windows\system32> Get-AzureVM
ServiceName      Name      Status
-----
GROTEM           GROTEM    StoppedDeallocated

PS C:\Windows\system32> Start-AzureVM -Name grotem -serviceName grotem
OperationDescription  OperationId      OperationStatus
-----
Start-AzureVM        hacbdd34-640b-9de6-94eb-f9a409f96f91  Succeeded

PS C:\Windows\system32> Get-AzureVM
ServiceName      Name      Status
-----
GROTEM           GROTEM    RoleStateUnknown

PS C:\Windows\system32> Get-AzureVM
ServiceName      Name      Status
-----
GROTEM           GROTEM    RoleStateUnknown

PS C:\Windows\system32> Get-AzureVM
ServiceName      Name      Status
-----
GROTEM           GROTEM    ReadyRole

PS C:\Windows\system32>
    
```

all items

NAME	TYPE	STATUS	SUBSCRIPTION
[REDACTED]	Storage Account	✓ Online	MSDN-Plattformen
GROTEM	Cloud service	✓ Running	MSDN-Plattformen
Marcimarc	Web Site	✓ Running	Visual Studio Premium bei...
Standardverzeichnis	Directory	✓ Active	Shared by all Standardverz...
VMMR2-AZURE	Hyper-V Recovery Manager Vault	✓ Active	Visual Studio Premium bei...
DPM	Backup Vault	✓ Active	MSDN-Plattformen
WS2012R2-GROTE	Backup Vault	✓ Active	MSDN-Plattformen
GROTEM	Virtual machine	✓ Running	MSDN-Plattformen
office	RemoteApp service	✓ Active	Visual Studio Premium bei...

Stoppen (IP Verlust)

```
Windows Azure Pack Administration PowerShell
PS C:\Windows\system32> Stop-AzureUM -name Grotem -ServiceName Grotem
Confirm
The specified virtual machine is the last virtual machine in this deployment. Continuing will result in a new IP address for your deployment. To
shut down without losing the deployment IP use -StayProvisioned.
[Y] Yes [N] No [S] Suspend [?] Help (default is "Y"): y
OperationDescription      OperationId      OperationStatus
-----
Stop-AzureUM              bc43dd95-3b42-9341-a5ca-948a70118c7c      Succeeded

PS C:\Windows\system32> Get-AzureUM
ServiceName      Name      Status
-----
GROTEM           GROTEM    StoppedDeallocated

PS C:\Windows\system32>
```

Azure-VM loeschen

```
PS C:\Windows\system32> Stop-AzureUM -name azure-UM-PS-01 -servicename Grotem
Confirm
The specified virtual machine is the last virtual machine in this deployment. Continuing will result in a new IP address for your deployment. To
shut down without losing the deployment IP use -StayProvisioned.
[Y] Yes [N] No [S] Suspend [?] Help (default is "Y"): y
OperationDescription      OperationId      OperationStatus
-----
Stop-AzureUM              0777f996-f499-9ede-bceb-d2e6576207bd      Succeeded

PS C:\Windows\system32> Get-AzureUM
ServiceName      Name      Status
-----
GROTEM           Azure-UM-PS-01      StoppedDeallocated
GROTEM           GROTEM              StoppedDeallocated

PS C:\Windows\system32> Remove-AzureUM -ServiceName GROTEM -Name Azure-UM-PS-01 -deleteUHD
OperationDescription      OperationId      OperationStatus
-----
Remove-AzureUM            ef2f9472-c265-95d7-aaf8-6de5aa6fbde9      Succeeded

PS C:\Windows\system32> Get-AzureUM
ServiceName      Name      Status
-----
GROTEM           GROTEM    StoppedDeallocated

PS C:\Windows\system32>
```

Neue Azure Webseite

```
PS C:\Windows\system32> New-AzureWebsite AzurePSTest
New-AzureWebsite : Your Windows Azure credential in the Windows PowerShell session has
expired. Please use Add-AzureAccount to login again.
At line:1 char:1
+ New-AzureWebsite AzurePSTest
+ ~~~~~
+ CategoryInfo          : CloseError: (:) [New-AzureWebsite], AddAuthenticationCantRenewEx
ception
+ FullyQualifiedErrorId : Microsoft.WindowsAzure.Commands.Websites.NewAzureWebsiteCommand

PS C:\Windows\system32> Add-AzureAccount
PS C:\Windows\system32>
```

Anmelden, wenn Anmeldeinformationen veraltet sind

```

Windows Azure Pack Administration PowerShell

PS C:\Windows\system32> New-AzureWebsite AzurePSTest

NumberOfWorkers      : 1
DefaultDocuments     : <Default.htm, Default.html, Default.asp, index.htm...>
NetFrameworkVersion  : v4.0
PhpVersion            : 5.4
RequestTracingEnabled : False
HttpLoggingEnabled   : False
DetailedErrorLoggingEnabled : False
PublishingUsername    : $AzurePSTest
PublishingPassword    : vMxLp1PVBMZ7PiJbH7u01...QuokrYto7Li3n8ett
AppSettings          : <WEBSITE_NODE_DEFAULT_VERSION>
Metadata              : <>
ConnectionStrings    : <>
HandlerMappings       : <>
Name                  : AzurePSTest
State                 : Running
HostNames             : <azurepstest.azurewebsites.net>
WebSpace              : eastuswebspace
SelfLink              : https://vaws-prod-hlu-007.api.azurewebsites.windows.net:454/20130801/websystems/websites/web/subscriptions/...-89dd-2adfab61f0f1/webspaces/eastuswebspace/sites/AzurePSTest
RepositorySiteName   : AzurePSTest
Owner                 :
UsageState            : Normal
Enabled               : True
AdminEnabled          : True
EnabledHostNames     : <azurepstest.scm.azurewebsites.net>
SiteProperties        : Microsoft.WindowsAzure.Commands.Utilities.Websites.Services.WebEntitities.SiteProperties
AvailabilityState     : Normal
SSLCertificates       : <>
SiteMode              : Limited
HostNameSslStates     : <>
AzureDriveTraceEnabled :
AzureDriveTraceLevel  : Error
AzureTableTraceEnabled :
AzureTableTraceLevel  : Error
ManagedPipelineMode  : Integrated
WebSocketsEnabled    : False
RemoteDebuggingEnabled : False
RemoteDebuggingVersion : VS2012

PS C:\Windows\system32>

```

Da ist die Webseite

alle elemente

NAME	TYP	STATUS	ABONNEMENT
Microsoft Azure Storage	→ Speicherkonto	✓ Online	MSDN-Plattformen
GROTEM	Cloud-Dienst	■ Angehalten	MSDN-Plattformen
AzurePSTest	Website	✓ Wird ausgeführt	MSDN-Plattformen
Marcimarc	Website	✓ Wird ausgeführt	Visual Studio Premium bei...
GROTEM	Virtueller Computer	■ Angehalten	MSDN-Plattformen
GROTEM2	Virtueller Computer	■ Angehalten	MSDN-Plattformen
Standardverzeichnis	Verzeichnis	✓ Aktiv	Von allen Standardverzeic...
VMMR2-AZURE	Hyper-V-Wiederherstellungs-Manager-Tresor	✓ Aktiv	Visual Studio Premium bei...
DPM	Sicherungstresor	✓ Aktiv	MSDN-Plattformen
WS2012R2-GROTE	Sicherungstresor	✓ Aktiv	MSDN-Plattformen