

## RD Virtualization mit Windows Server 2008 R2

Eine der vielen Neuerungen der RD-Services (RD = Remote Desktop) in Windows Server 2008 R2 ist die RD Virtualization, mit dessen Hilfe Benutzer ueber TS Webapp oder TS Remoteapp Zugriff auf einen TS RD Host Server bekommen und dann per RD Redirection ueber einen Hyper-V Host auf einen personalisierten virtualisierten Desktop weitergeleitet werden.

### Testumgebung:

1 Hyper-V R2 Server

1 TS R2 Server

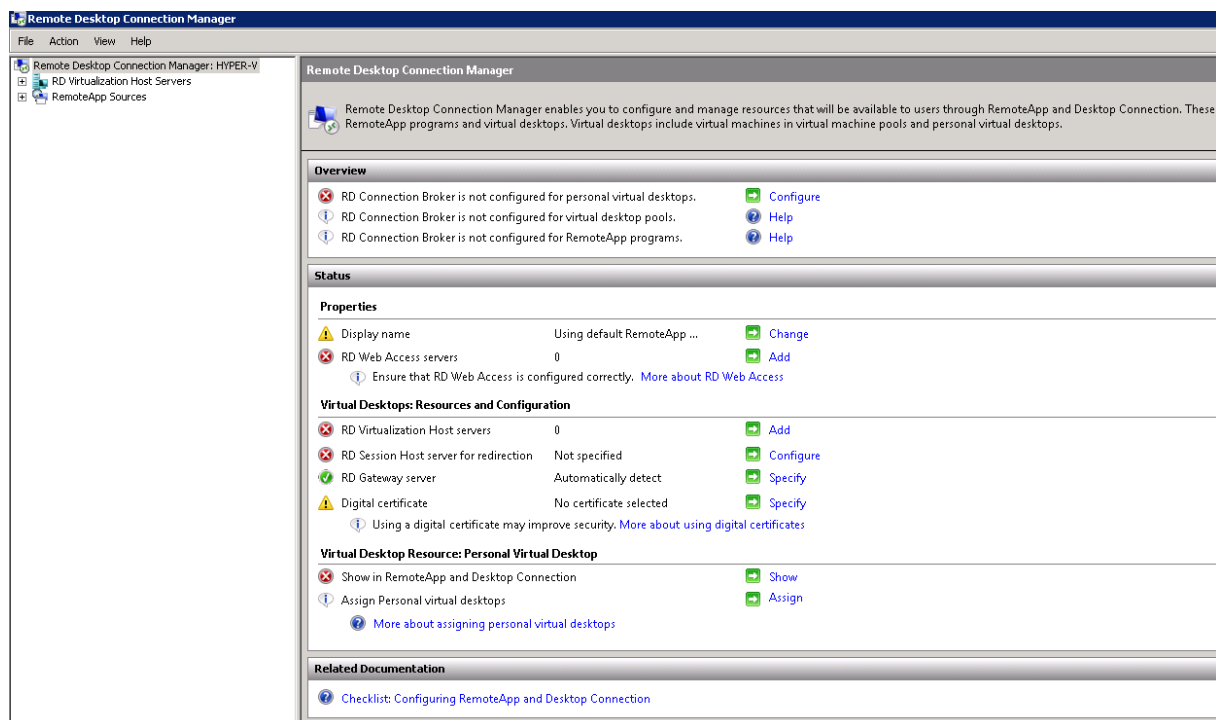
1 virtueller R2 DC

1 Netbook mit Windows 7 als Client

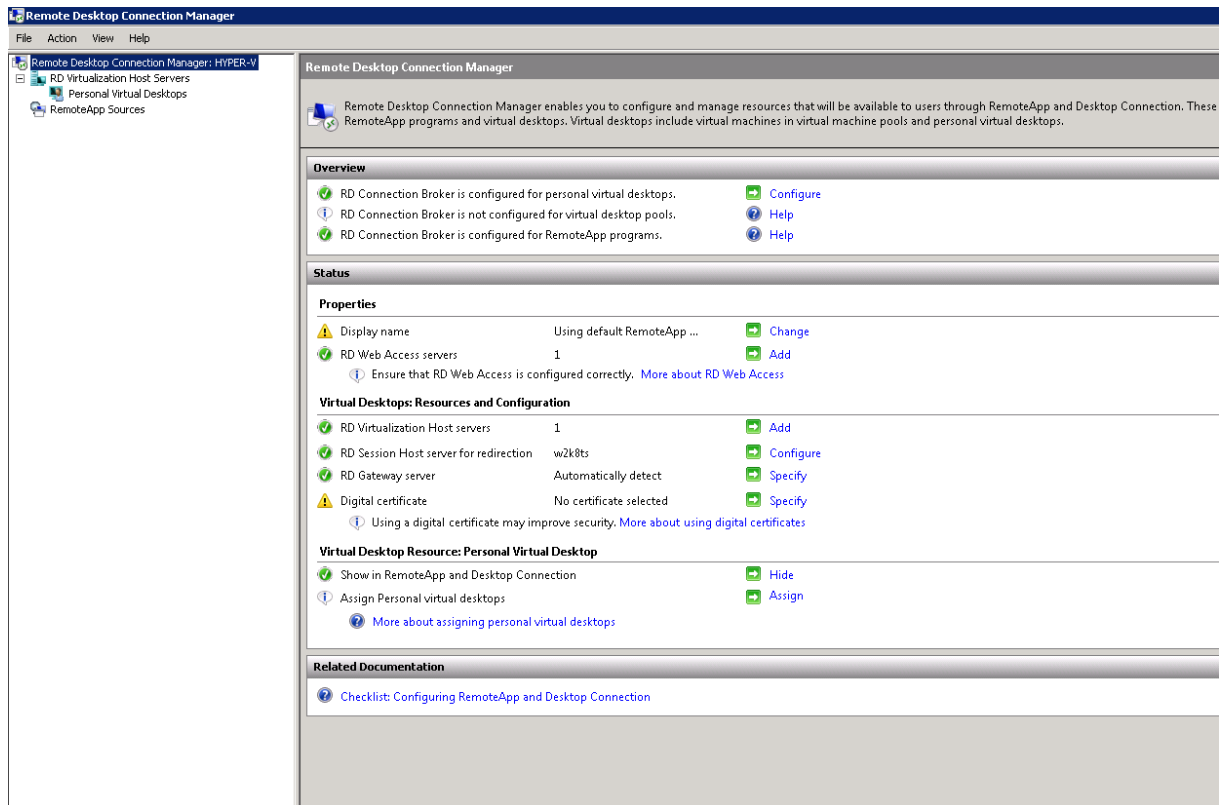
1 virtuelle Windows 7 Workstation unter Hyper-V als RD Client Ziel

### RD CM starten

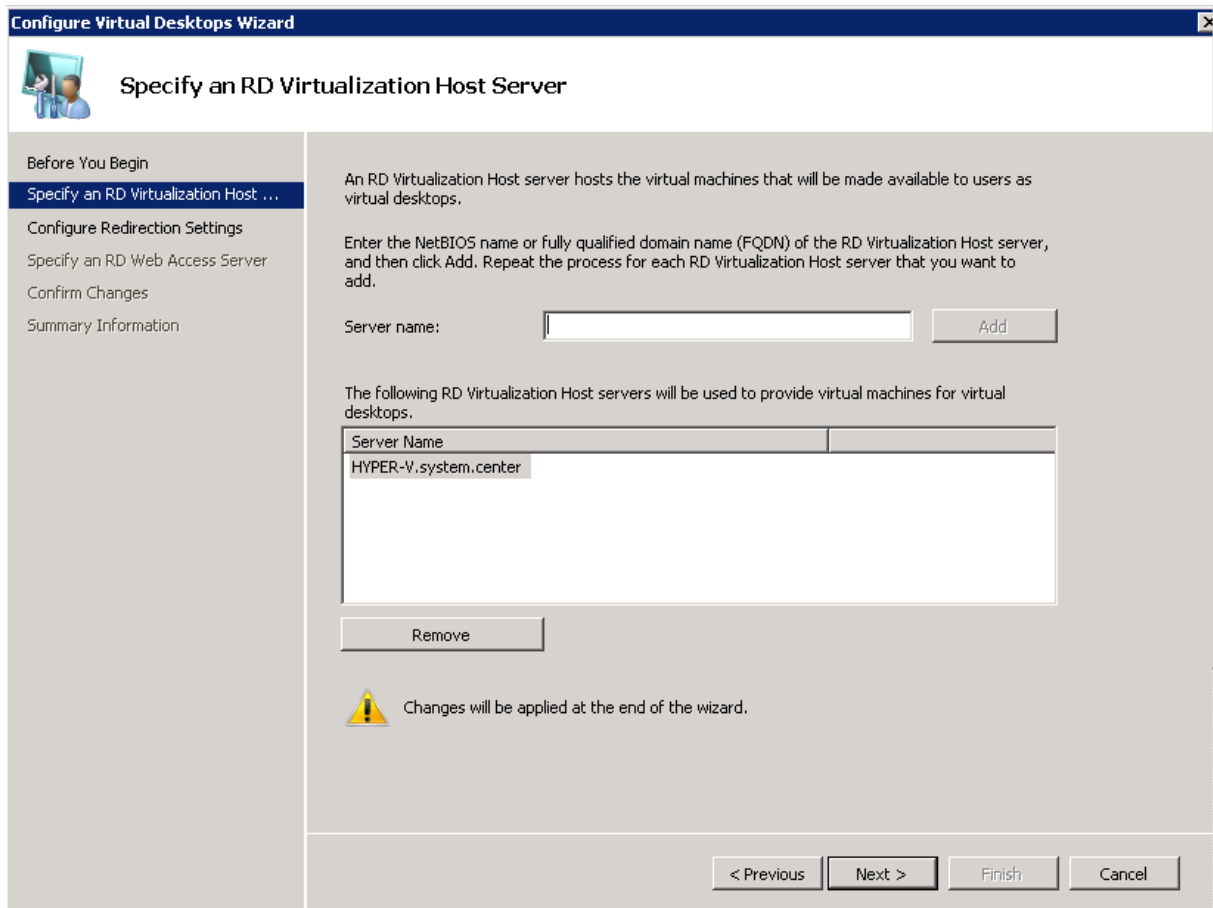
### Vorher



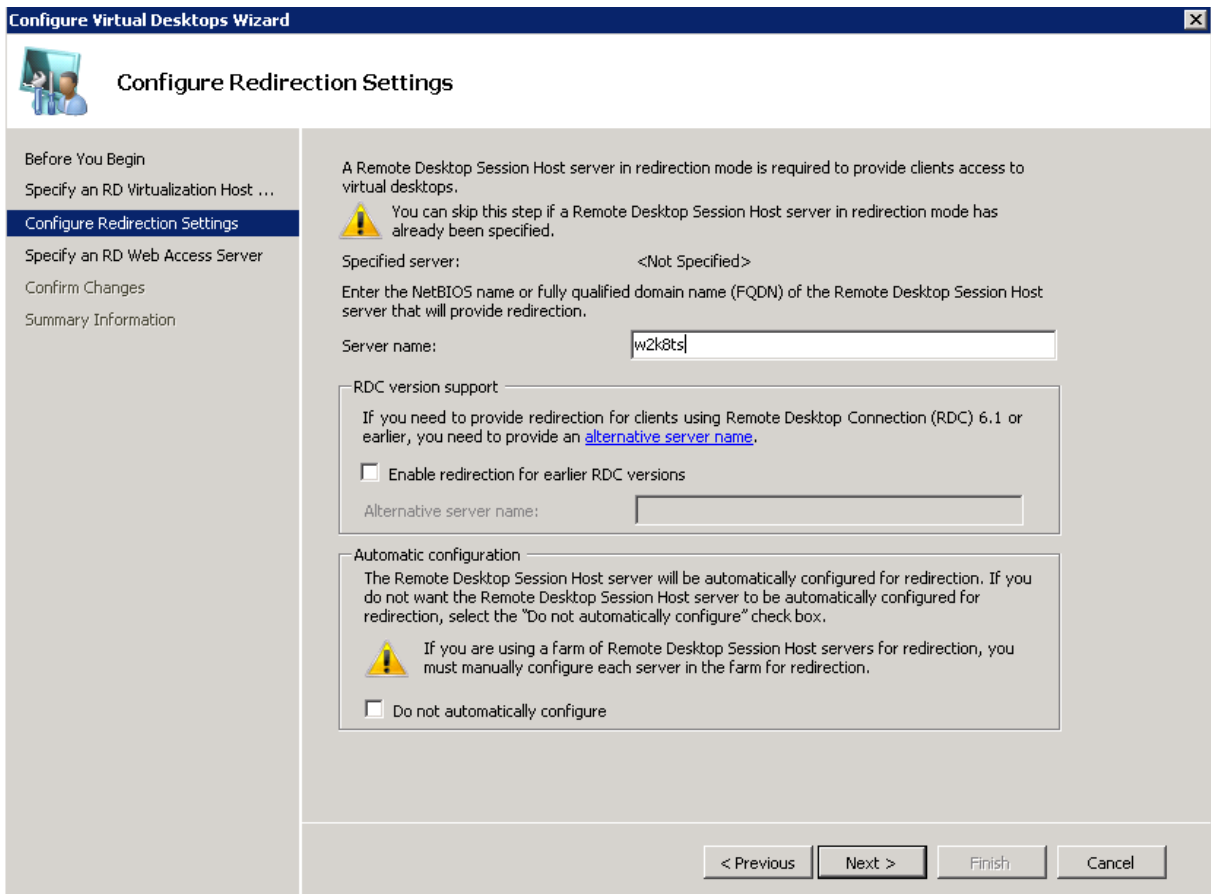
### Nachher



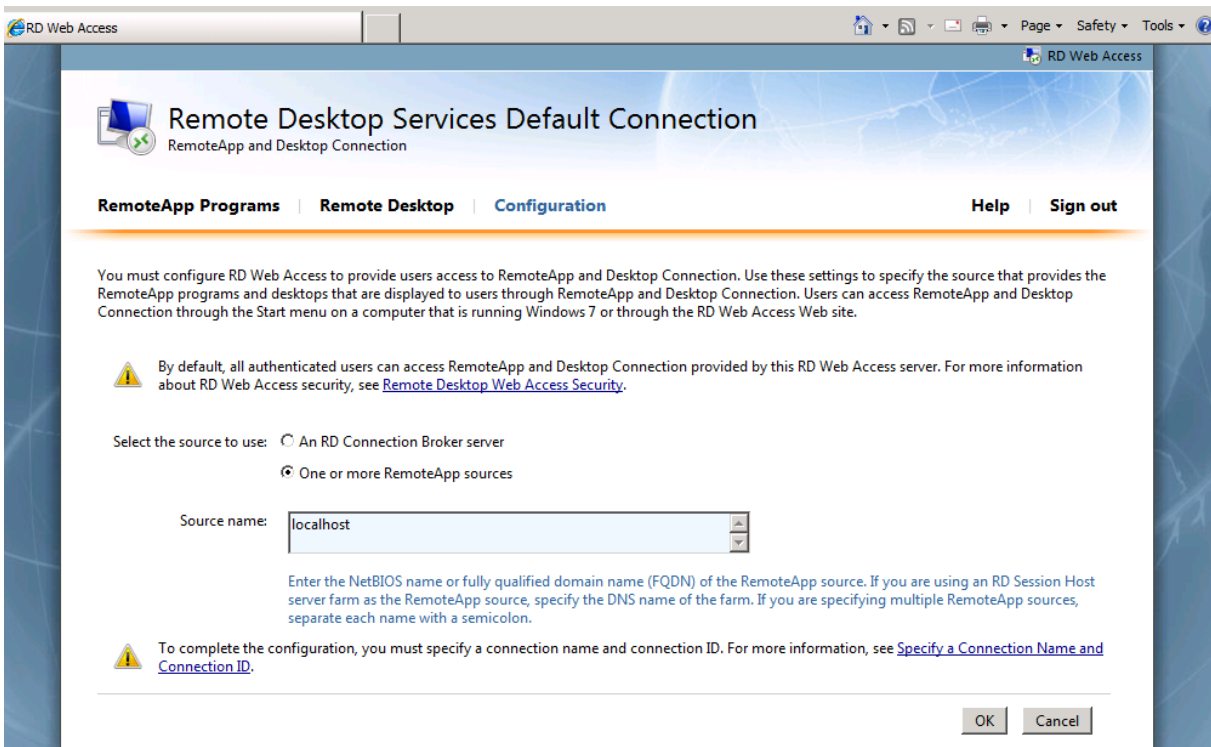
RD Virtualization Server angeben



RD Redirection Server angeben. Zu diesem RD Host conencten sich Clients und werden dann zum virtuellen Client auf dem Hyper-V Host redirectet.



RDS konfigurieren, in diesem fall ohne Connection Broker




RDR Settings

**Configure Virtual Desktops Wizard** [X]

### Configure Redirection Settings

**Before You Begin**  
Specify an RD Virtualization Host ...  
**Configure Redirection Settings**  
Specify an RD Web Access Server  
Confirm Changes  
Summary Information

A Remote Desktop Session Host server in redirection mode is required to provide clients access to virtual desktops.

 You can skip this step if a Remote Desktop Session Host server in redirection mode has already been specified.

Specified server: w2k8ts

Enter the NetBIOS name or fully qualified domain name (FQDN) of the Remote Desktop Session Host server that will provide redirection.

Server name:

**RDC version support**


If you need to provide redirection for clients using Remote Desktop Connection (RDC) 6.1 or earlier, you need to provide an [alternative server name](#).

Enable redirection for earlier RDC versions

Alternative server name:

**Automatic configuration**

The Remote Desktop Session Host server will be automatically configured for redirection. If you do not want the Remote Desktop Session Host server to be automatically configured for redirection, select the "Do not automatically configure" check box.

 If you are using a farm of Remote Desktop Session Host servers for redirection, you must manually configure each server in the farm for redirection.

Do not automatically configure

< Previous    Next >    Finish    Cancel

RD Web Access Server angeben



## Specify an RD Web Access Server

Before You Begin

Specify an RD Virtualization Host ...

Configure Redirection Settings

Specify an RD Web Access Server

Confirm Changes

Summary Information



For an RD Web Access server to display RemoteApp and Desktop Connection from this RD Connection Broker server, the RD Web Access server must be a member of the TS Web Access Computers group on this RD Connection Broker server.

Enter the NetBIOS name or fully qualified domain name (FQDN) of the RD Web Access server that you want to add to the TS Web Access Computers group.

Server name:



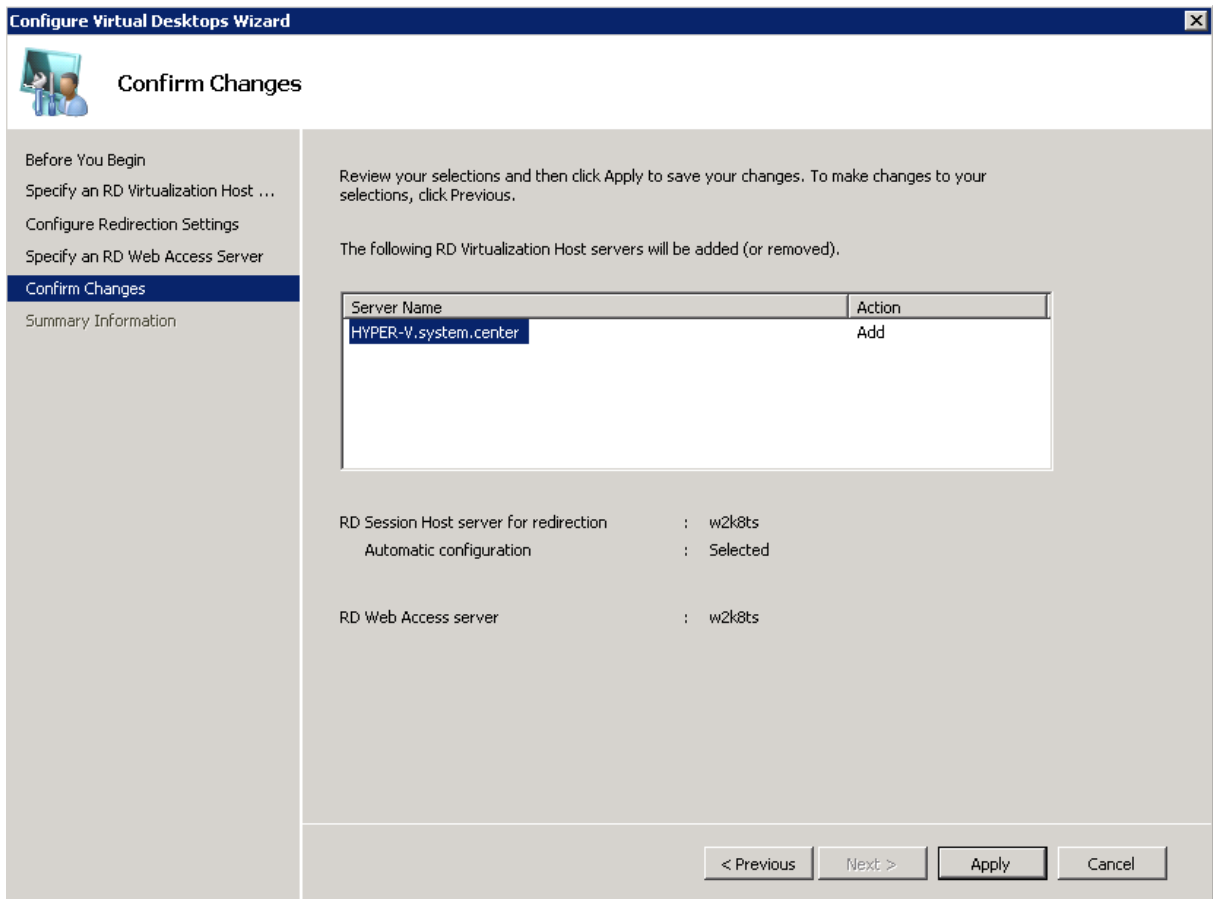
Ensure that you have configured the RD Web Access server. To configure RD Web Access, install the RD Web Access role service on a computer. Then log on to the RD Web Access Web site as an administrator, and on the Configuration page, specify a source name. For more information, see [Configuring an RD Web Access Server for RemoteApp and Desktop Configuration](#).

< Previous

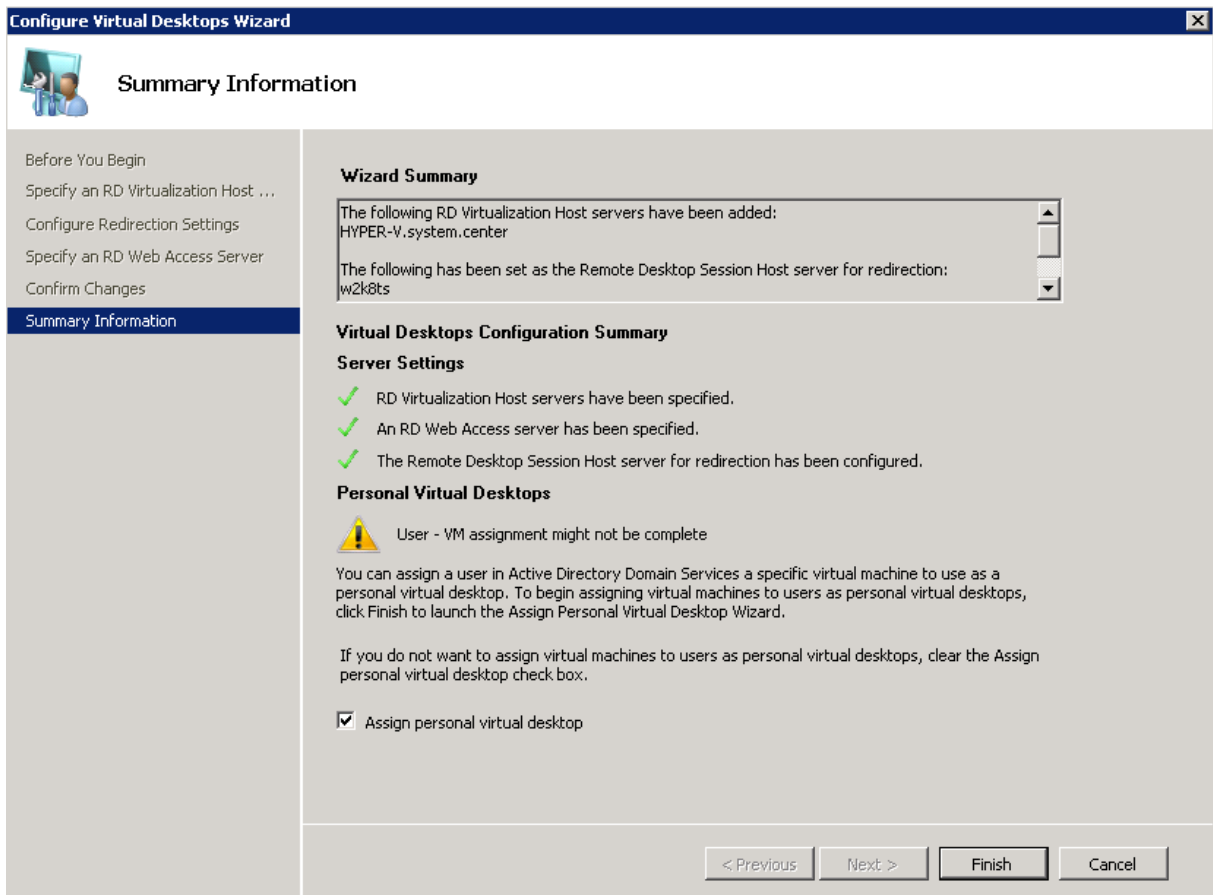
Next >

Finish

Cancel

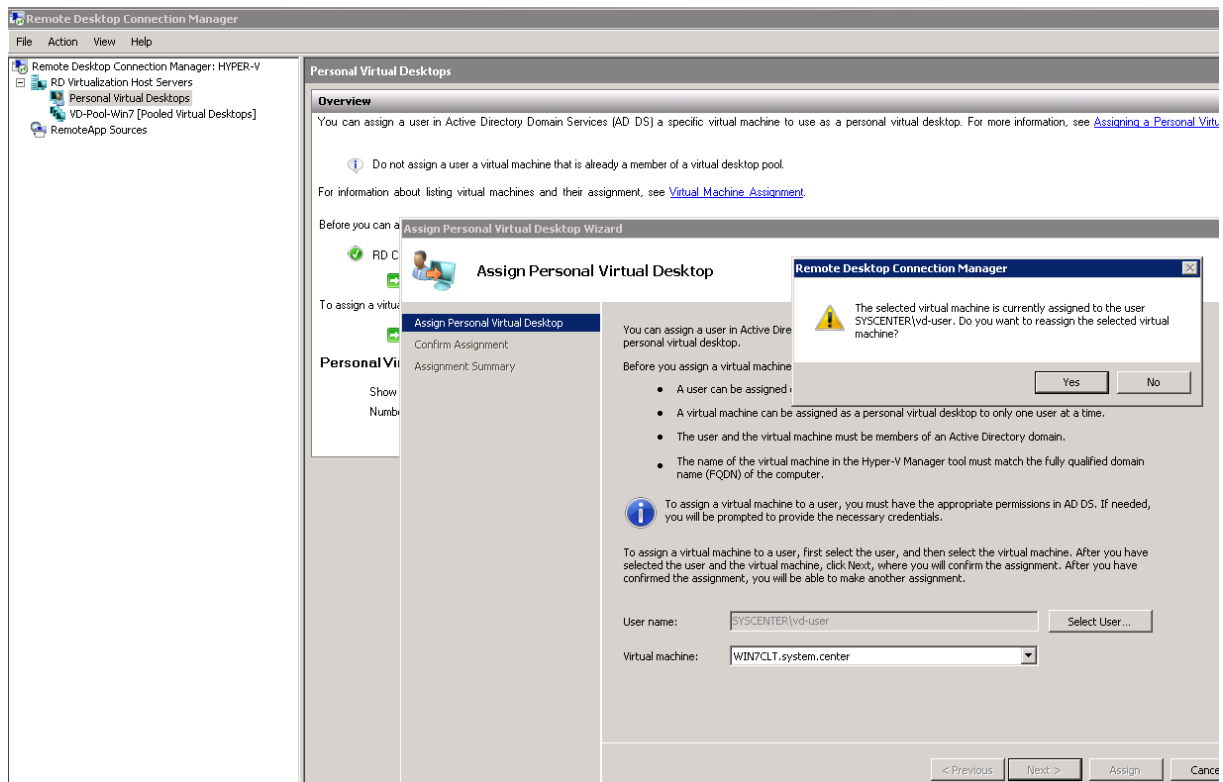


Zusammenfassung und User einen virtuellen Desktop zuordnen



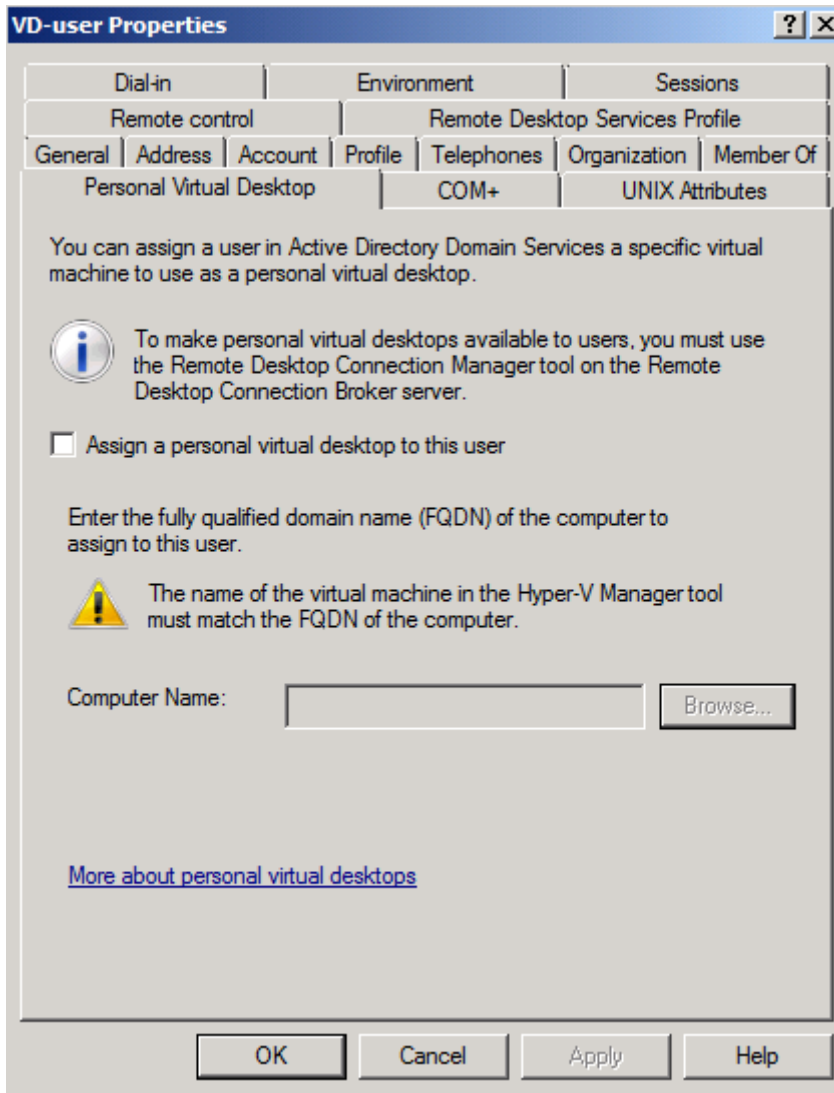
User einem RD Host zuweisen



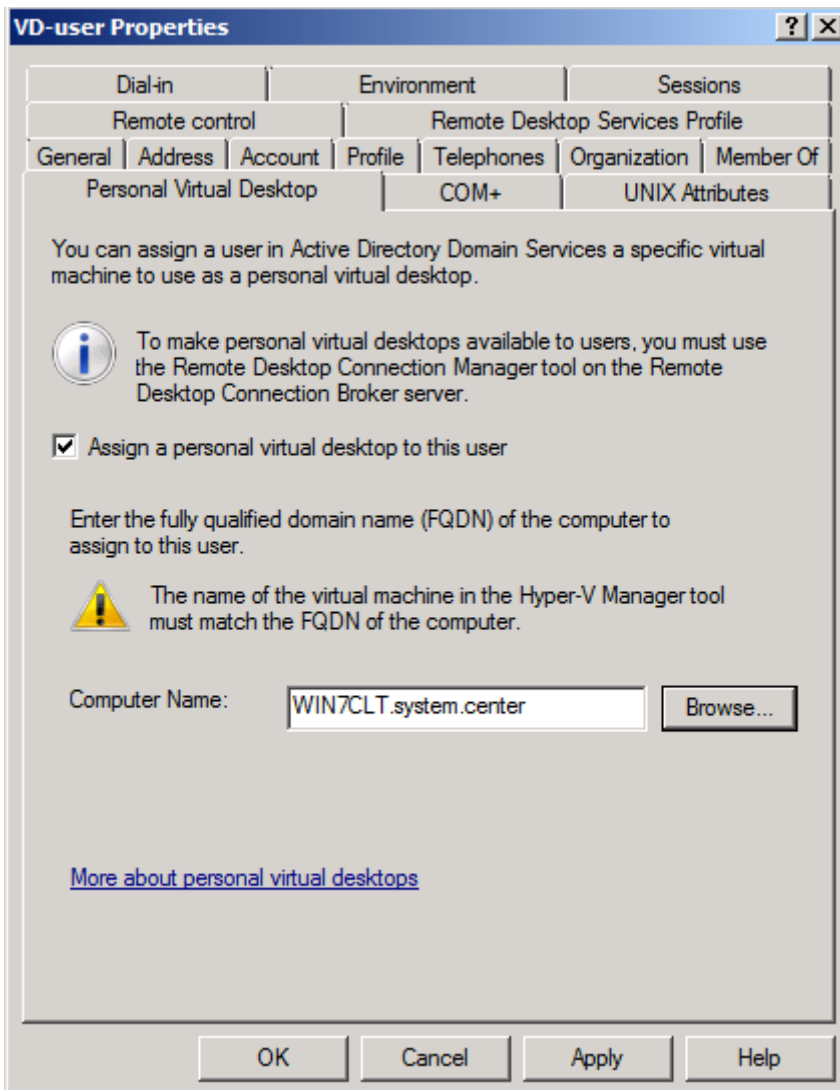


Geht auch ueber ADUC

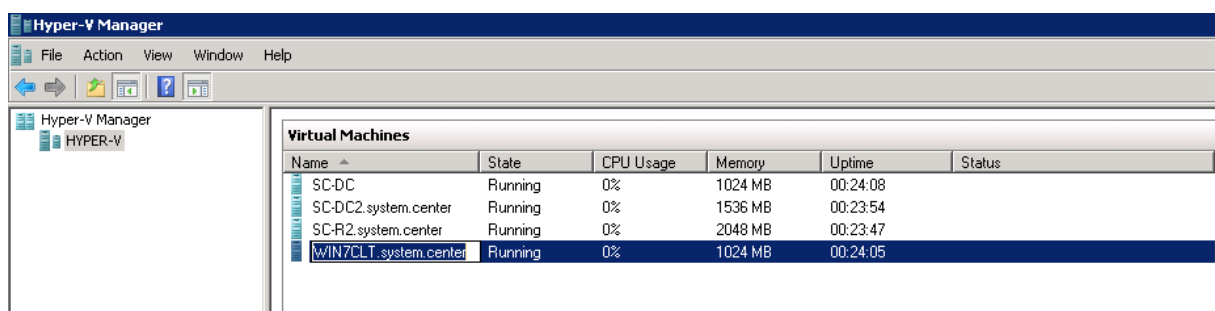
Vorher



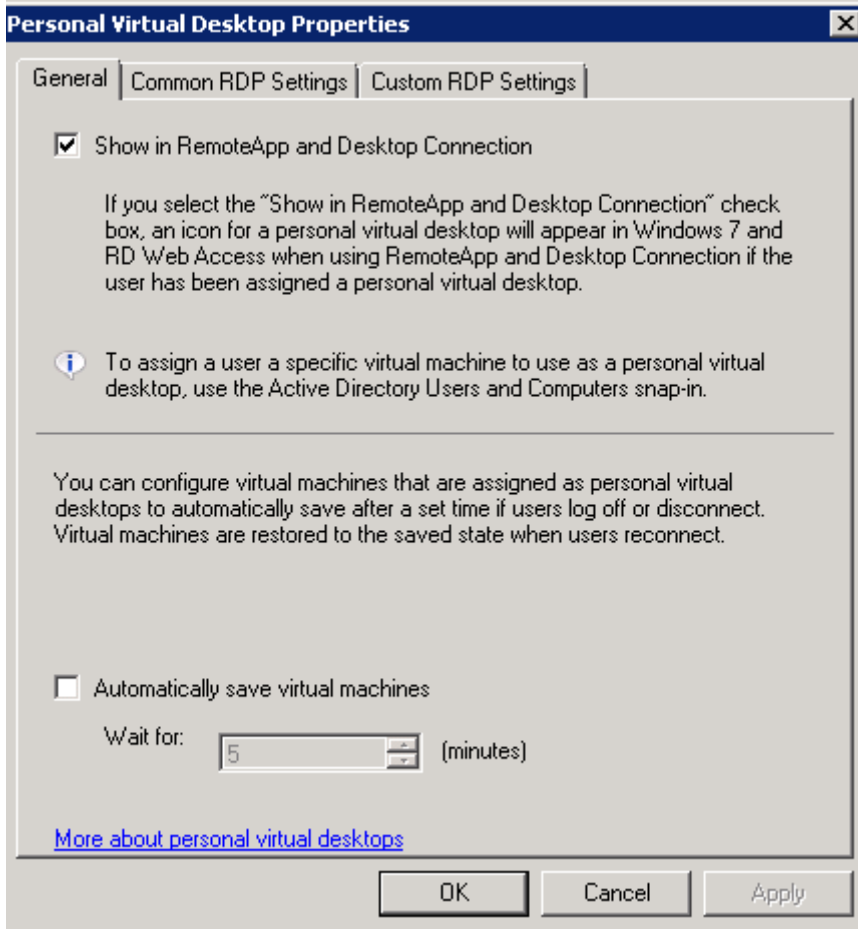
Nachher



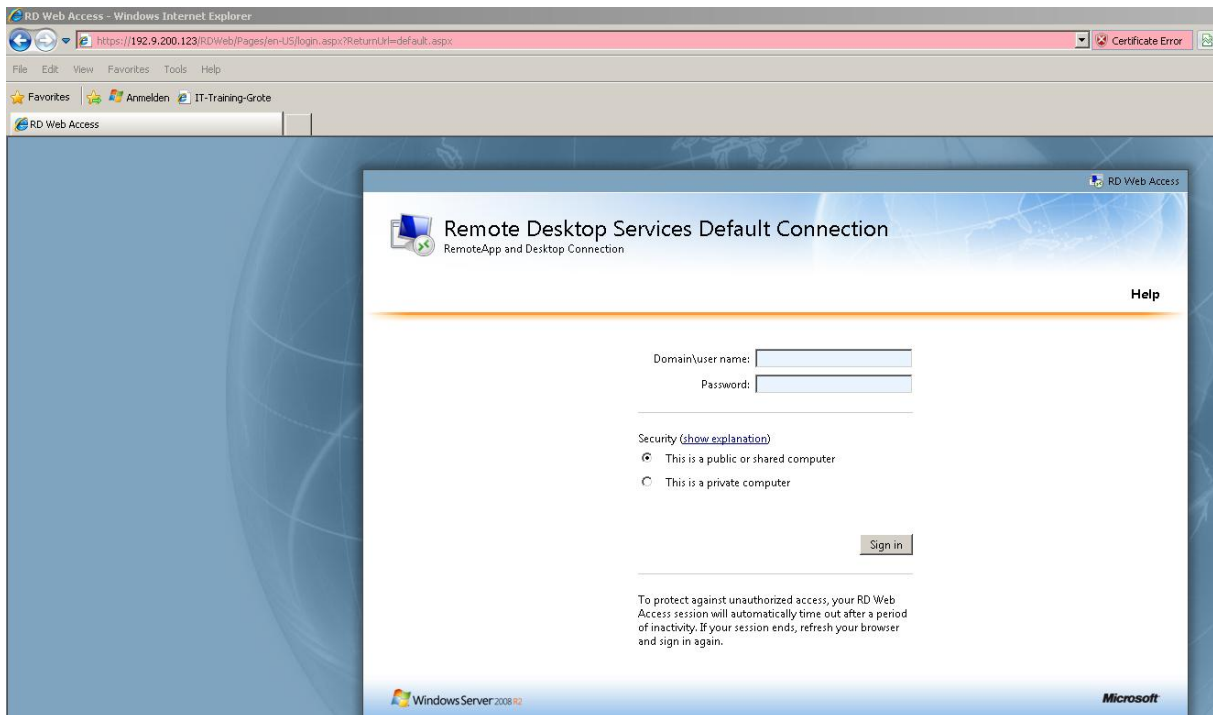
Namen muessen identisch sein (Hyper-V und PVD Settings)



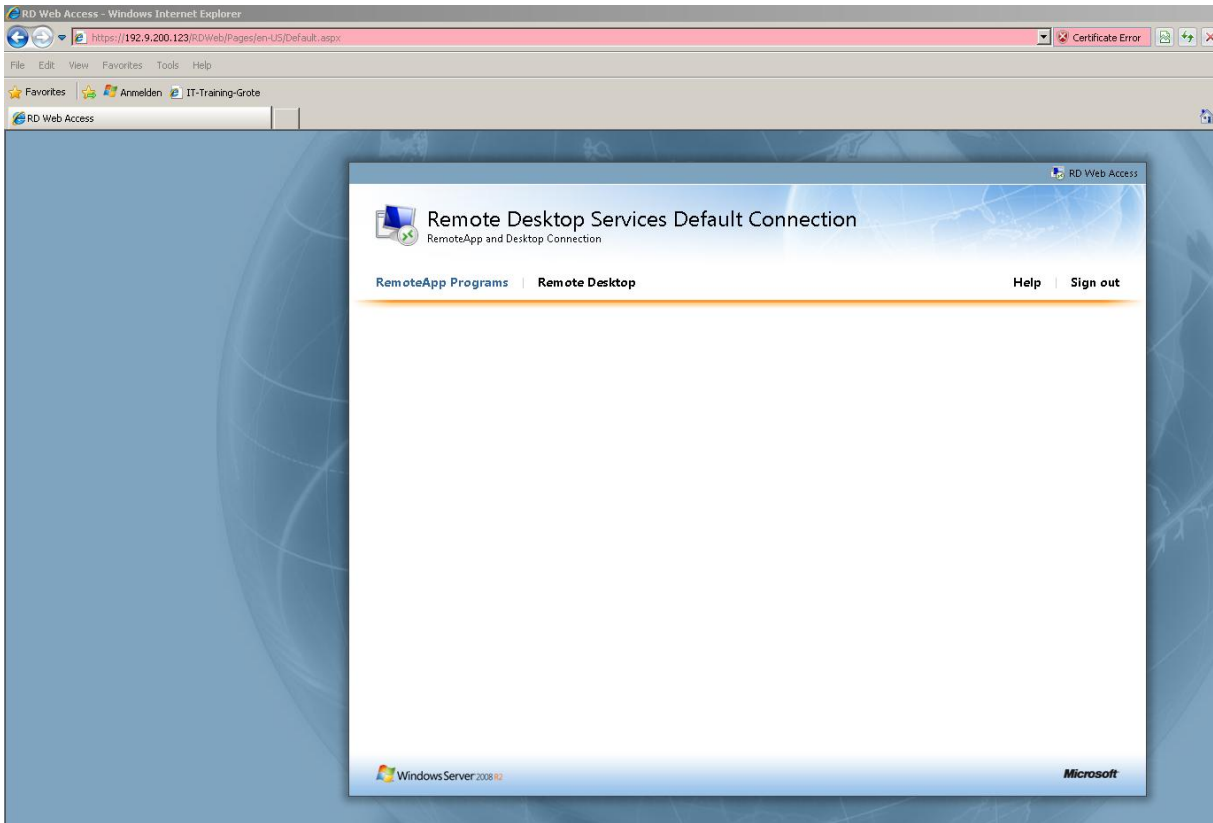
PVD auch in Remoteapps und RD anzeigen lassen



RD Webaccess aufrufen RD Servername/RDWEB



Noch alles leer



Ueber Remoteapp manager mit Leben fuehlen

**RemoteApp Manager**

File Action View Help

RemoteApp Manager

RemoteApp programs are programs that are accessed through Remote Desktop, and appear as if they are running on the client's local computer. Before you can make a RemoteApp program available to users, you must add it to the RemoteApp Programs list.

**Overview**

**RD Session Host Server Settings** [Change](#)

- Clients will connect to: W2K8TS.system.center
- Users can start listed and unlisted programs on initial connection.

**RD Gateway Settings** [Change](#)

- Clients will use RD Gateway settings defined by their domain's Group Policy.

**Digital Signature Settings** [Change](#)

- No digital certificate is configured. (Using a digital certificate may improve security.)

**RDP Settings** [Change](#)

- Clients will connect with custom RDP settings.

**Distribution with RD Web Access**

- The TS Web Access Computers group is empty. RemoteApp programs may be unavailable to users. [Learn more](#)
- All RemoteApp programs are visible in RD Web Access.
- A remote desktop connection for this server is visible in RD Web Access. [Change](#)
- [More about using RD Web Access](#)

**Other Distribution Options**

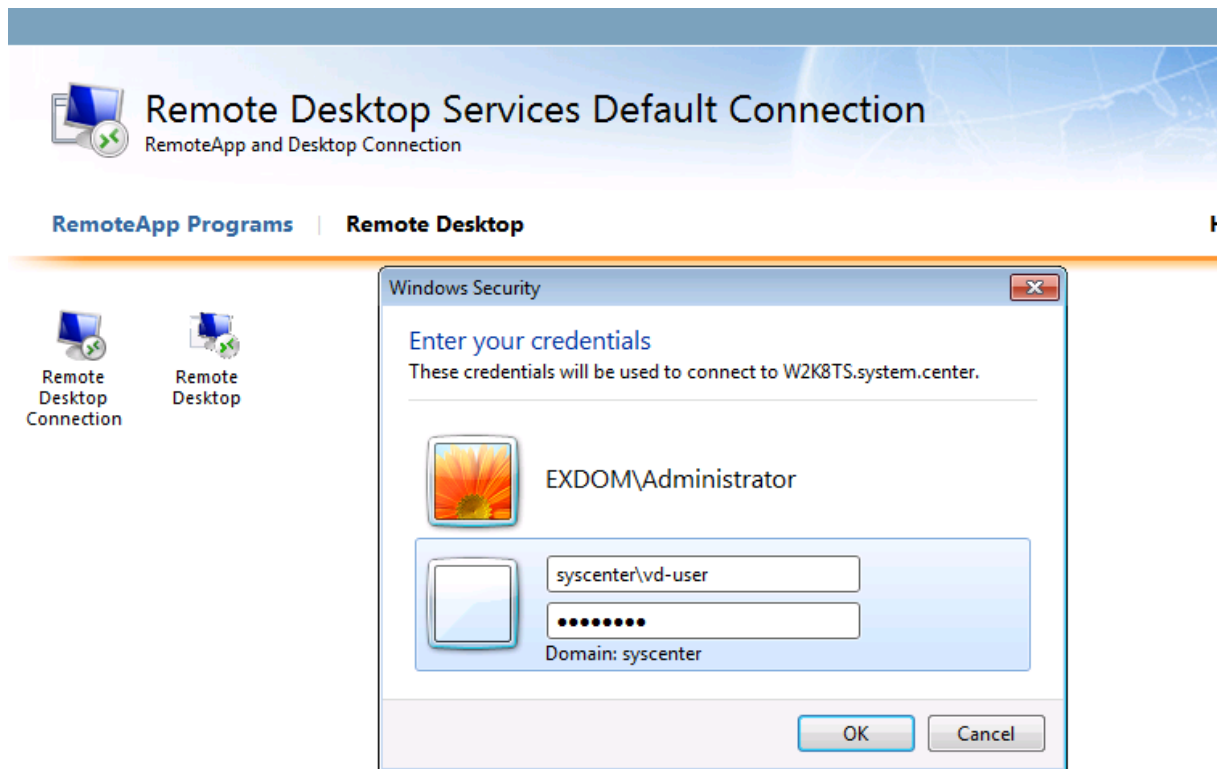
Select a RemoteApp program and choose an option below.

- [Create .rdp File](#)
- [Create Windows Installer Package](#)
- [More about distribution options](#)

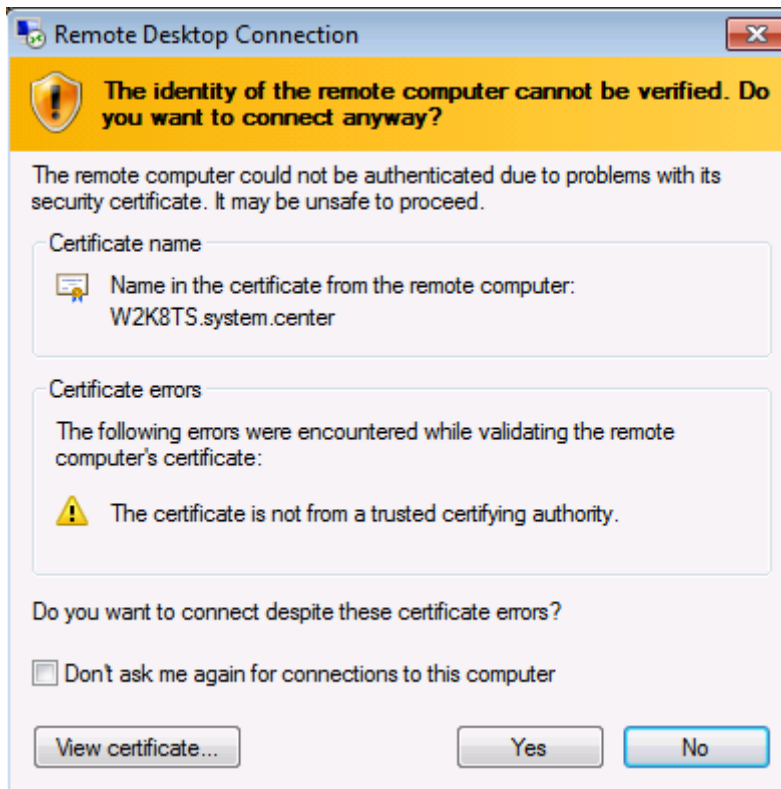
**RemoteApp Programs**

Name	Path	RD Web Acc...	Arguments
Remote Desktop Connection	C:\Windows\system32\mstsc...	Yes	Disabled

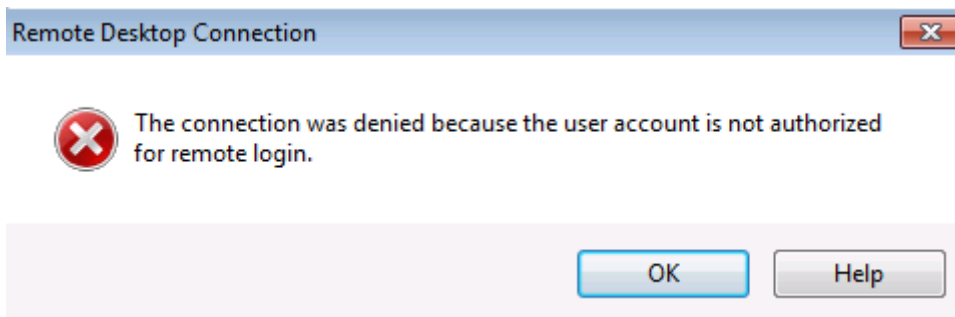
Dann taucht auch was auf und wir koennen uns verbinden



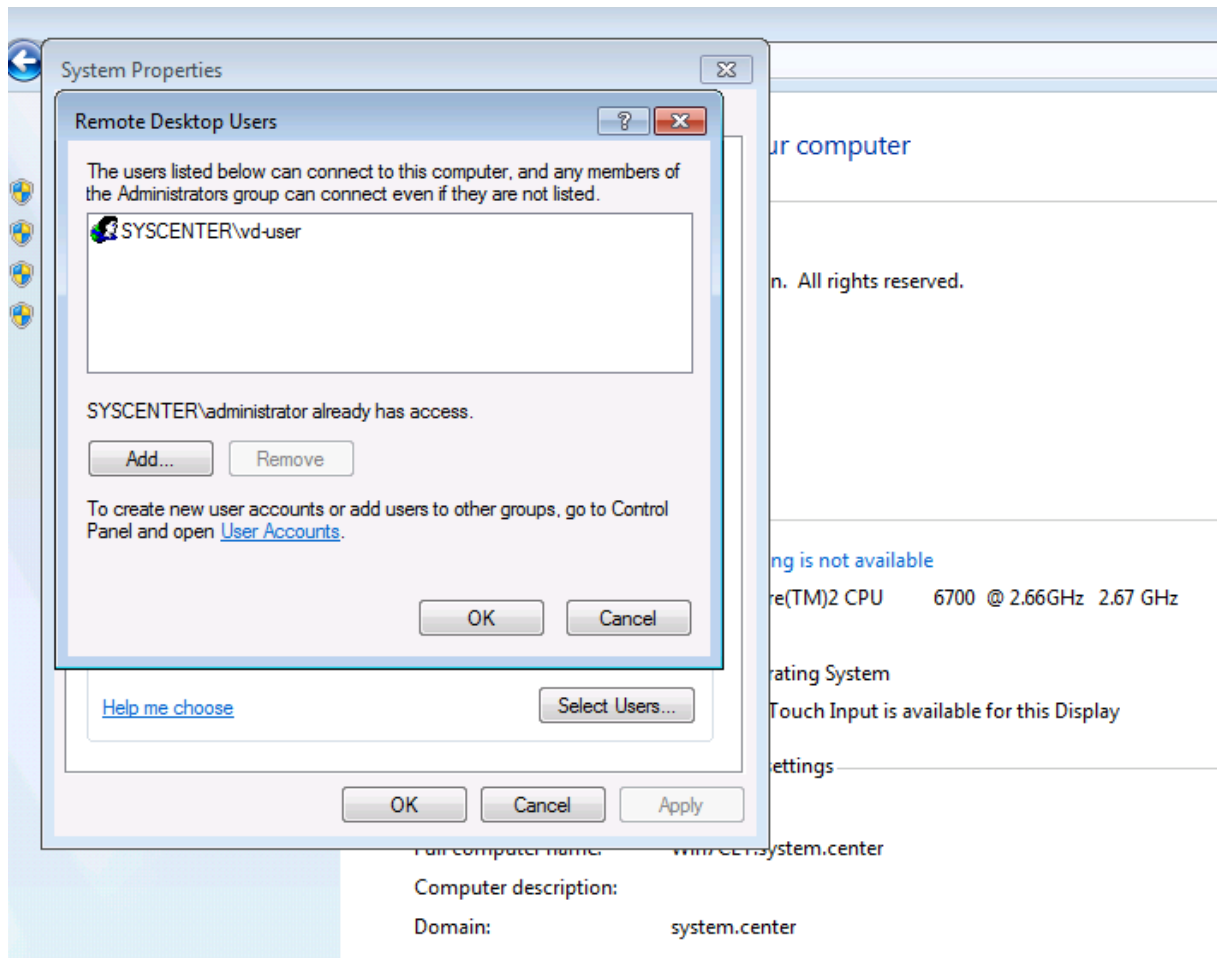
Jau, das ewige Problem mit den Self Signed Zertifikaten, ignorieren oder gleich eine vernuenftige CA Umgebung integrieren.



Hmm, keine Berechtigung, um auf das virtuelle Windows 7 auf dem Hyper-V Host zuzugreifen

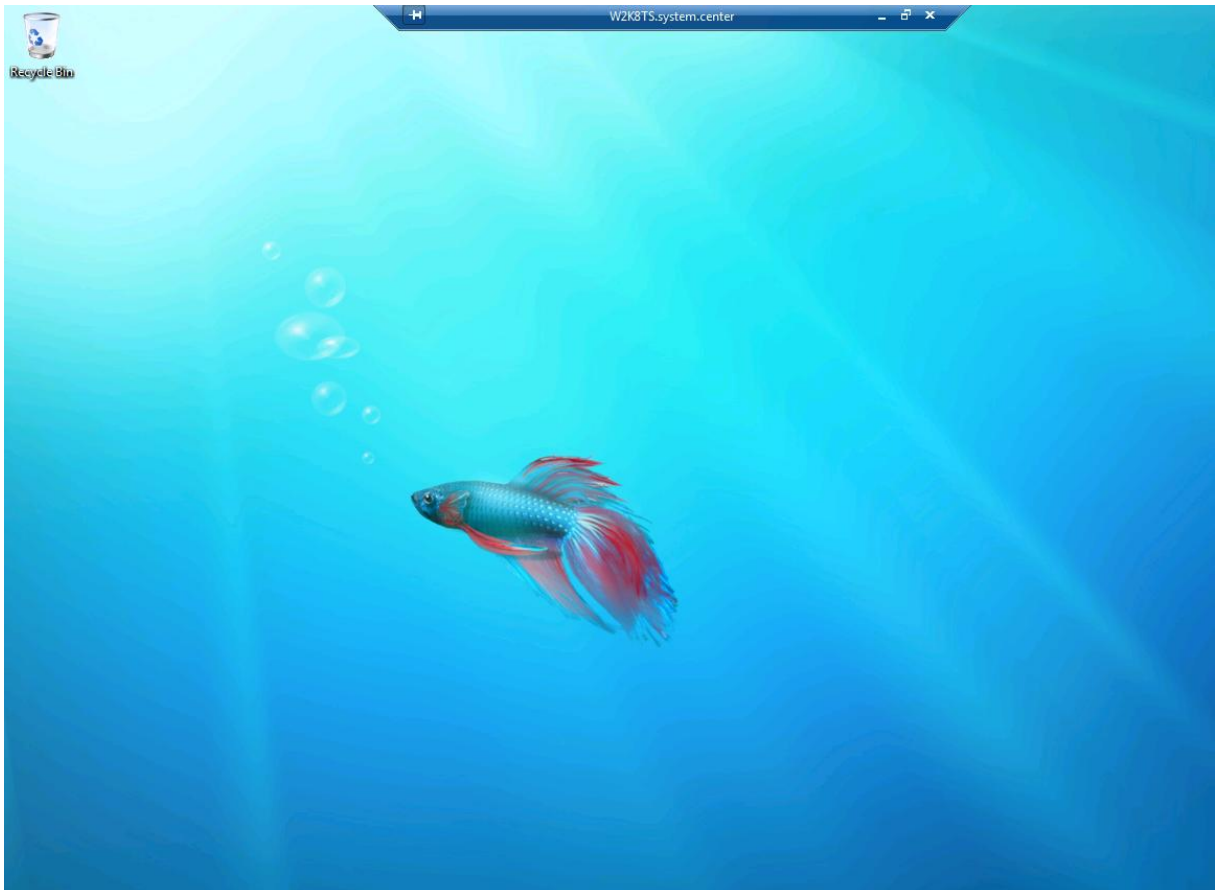


Also auf die Windows 7 Maschine und Berechtigungen vergeben



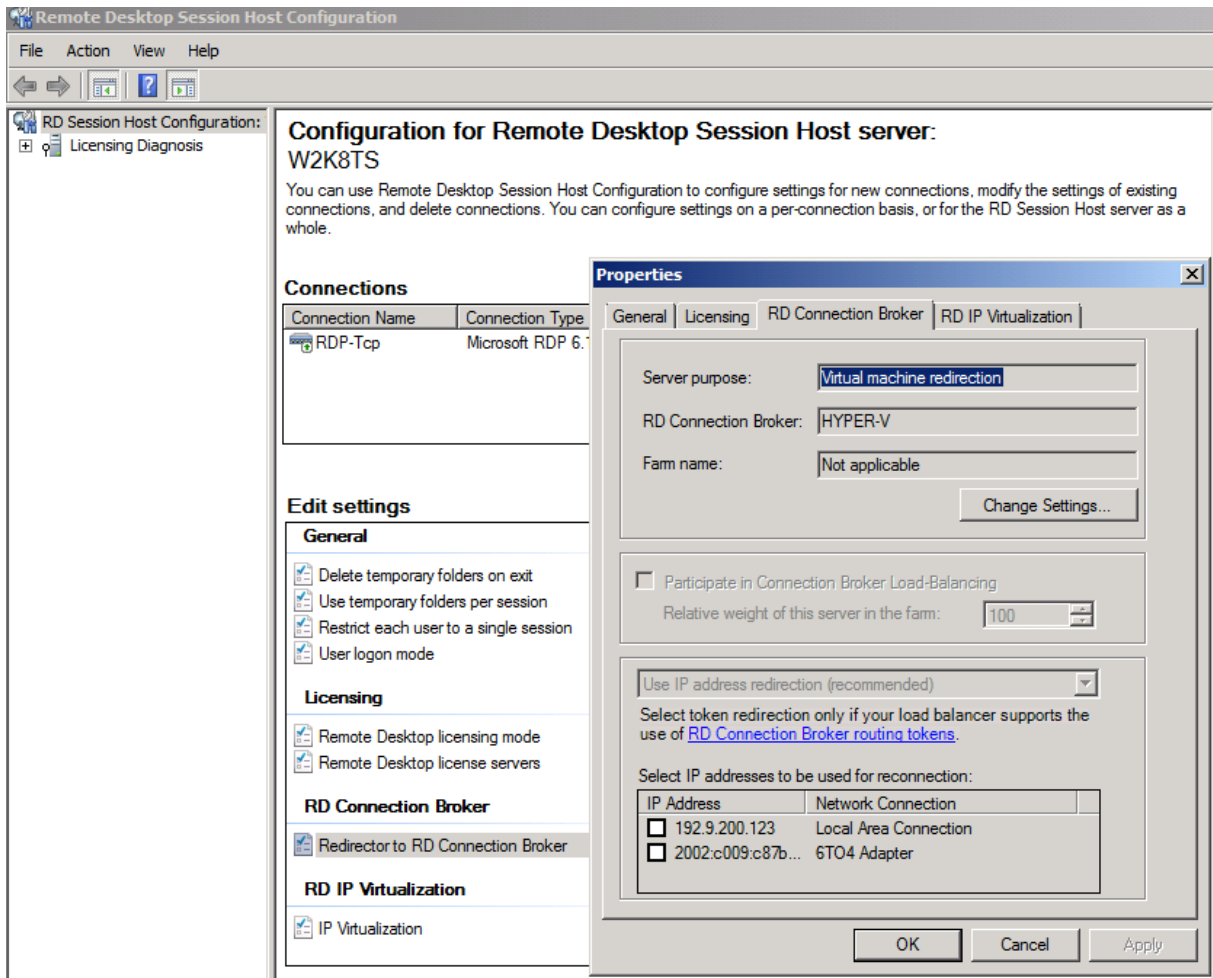
Nochmal probieren und schon funzt es!





## **RD Connection Broker Settings**

Per Default wird kein RD Connection Broker genutzt, sondern in diesem Szenario „nur“ die Virtual Machine Redirection genutzt



Verschiedene Settings sind moeglich

**RD Connection Broker Settings** [X]

Select how you want this Remote Desktop Session Host server to be used with RD Connection Broker.

**Remote Desktop Virtualization**

- Virtual machine redirection  
Provides redirection for virtual machines used in RemoteApp and Desktop Connection.

**Remote Desktop Services**

- Dedicated farm redirection  
Provides dedicated redirection for the specified farm.
- Farm member  
Joins this Remote Desktop Session Host server to the specified farm.
- No farm membership or redirection  
This remote desktop will neither be a farm member nor provide redirection.

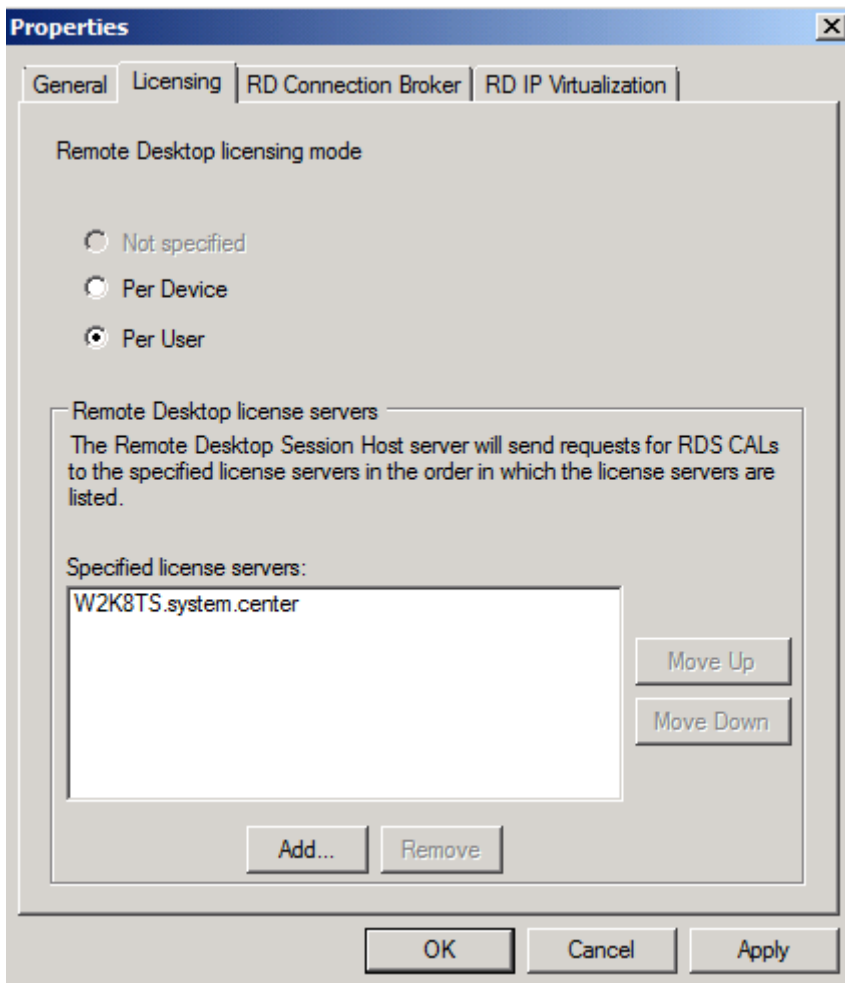
RD Connection Broker server name:

Farm Name:

[More about configuring redirection and farm membership](#)

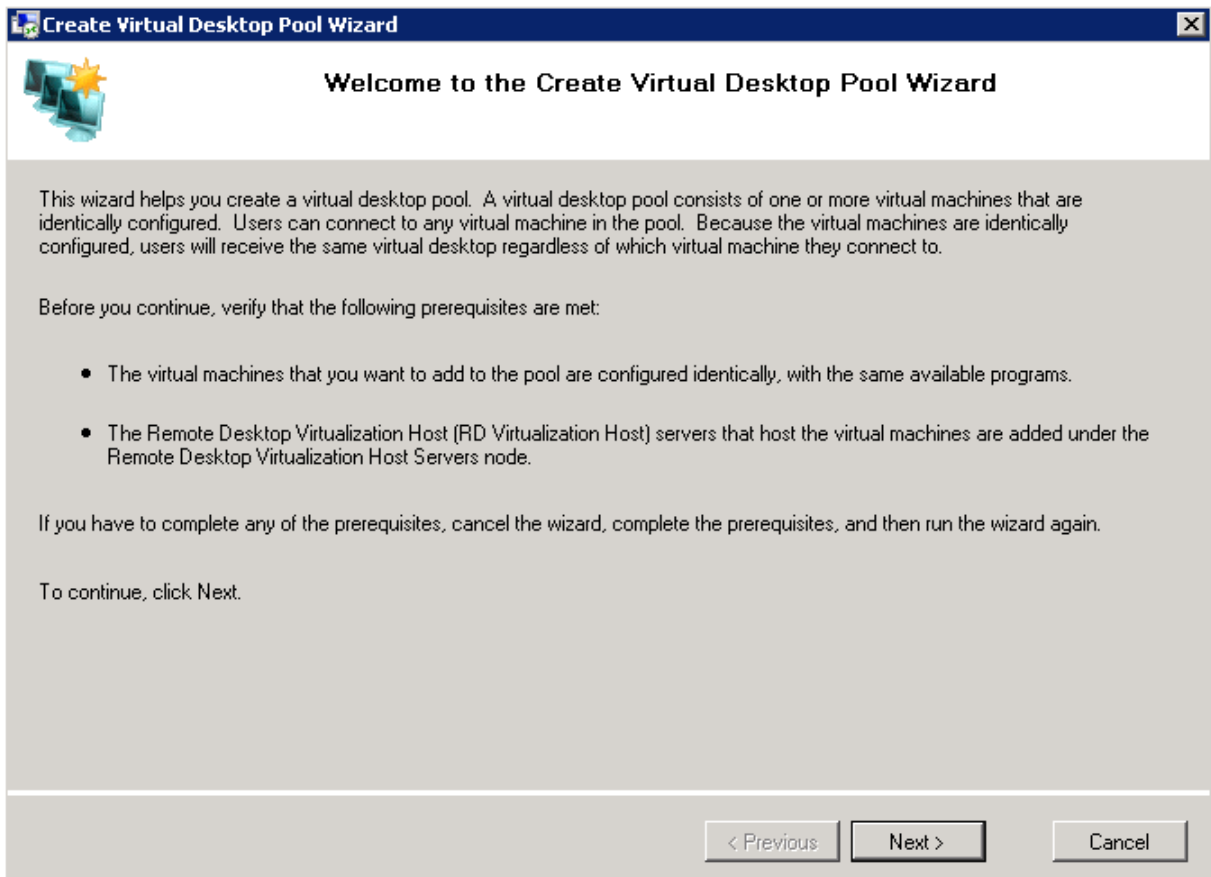
OK Cancel

RD Licensing Server angeben

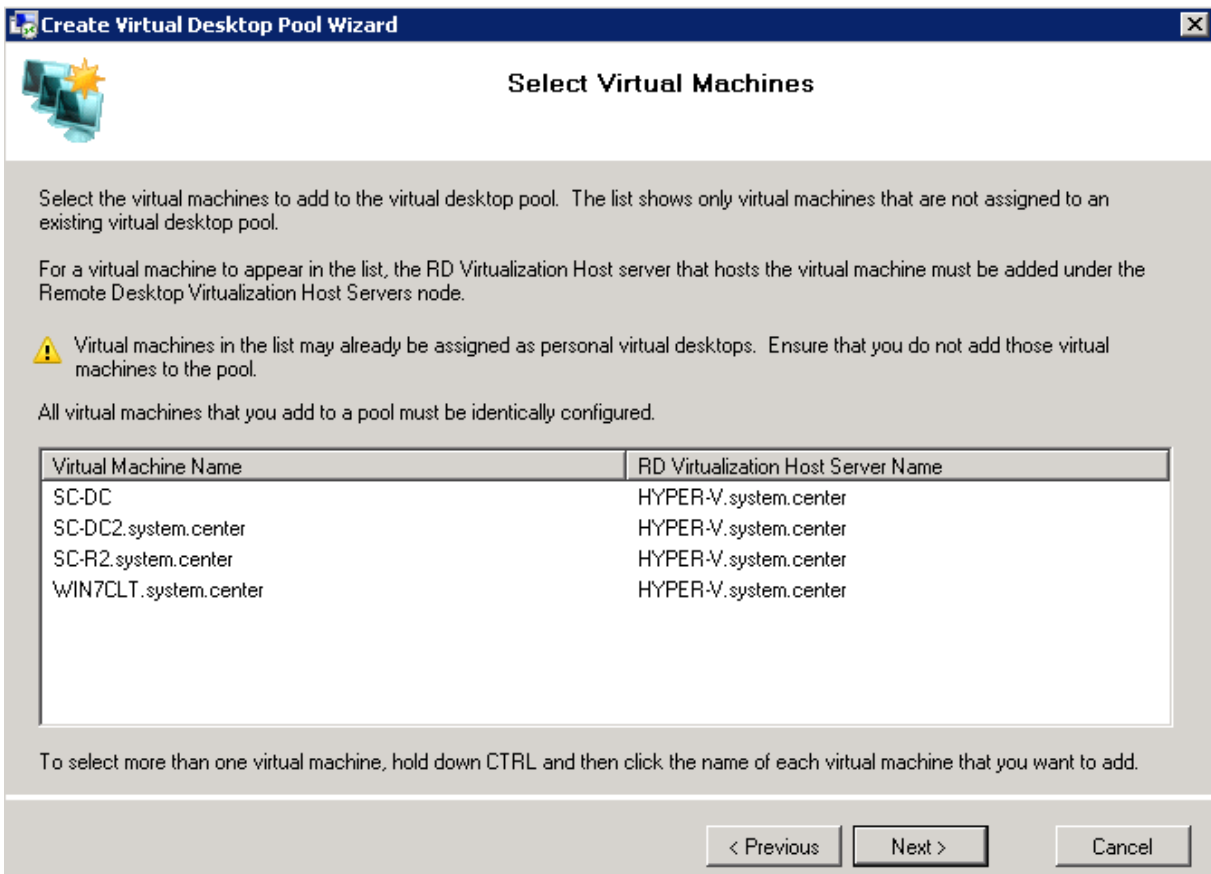


Feintuning

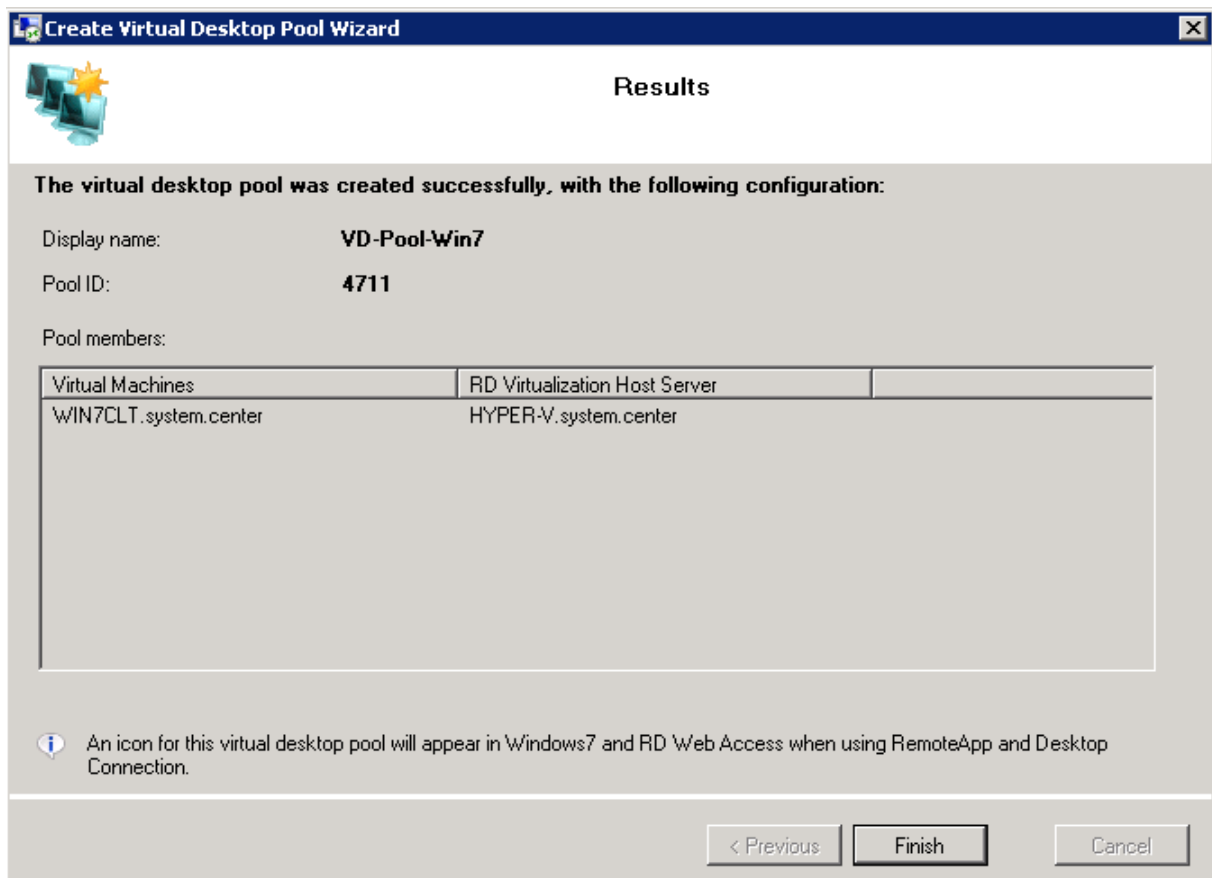
VD Pool



Clients fuer den gemeinsamen Pool auswaehlen



Display Namen und Pool ID (numerisch) vergeben



### Fazit:

Dieses Testlab verwendete die einfachsten Einstellungen. In Enterprise Umgebungen sind noch Punkte wie:

- Cluster fuer Connection Broker
- Redundante RD Gateway und TS Session Host zu beachten, sowie
- Redundante Hyper-V Hosts mit SCVMM und SCOM, sowie
- eine funktionsfaehige CA Umgebung mit zentral verwalteten Zertifikaten, sowie eine Clientrollout Technik fuer die RD VD Hosts auf dem Hyper-V,

um nur einiges zu nennen

