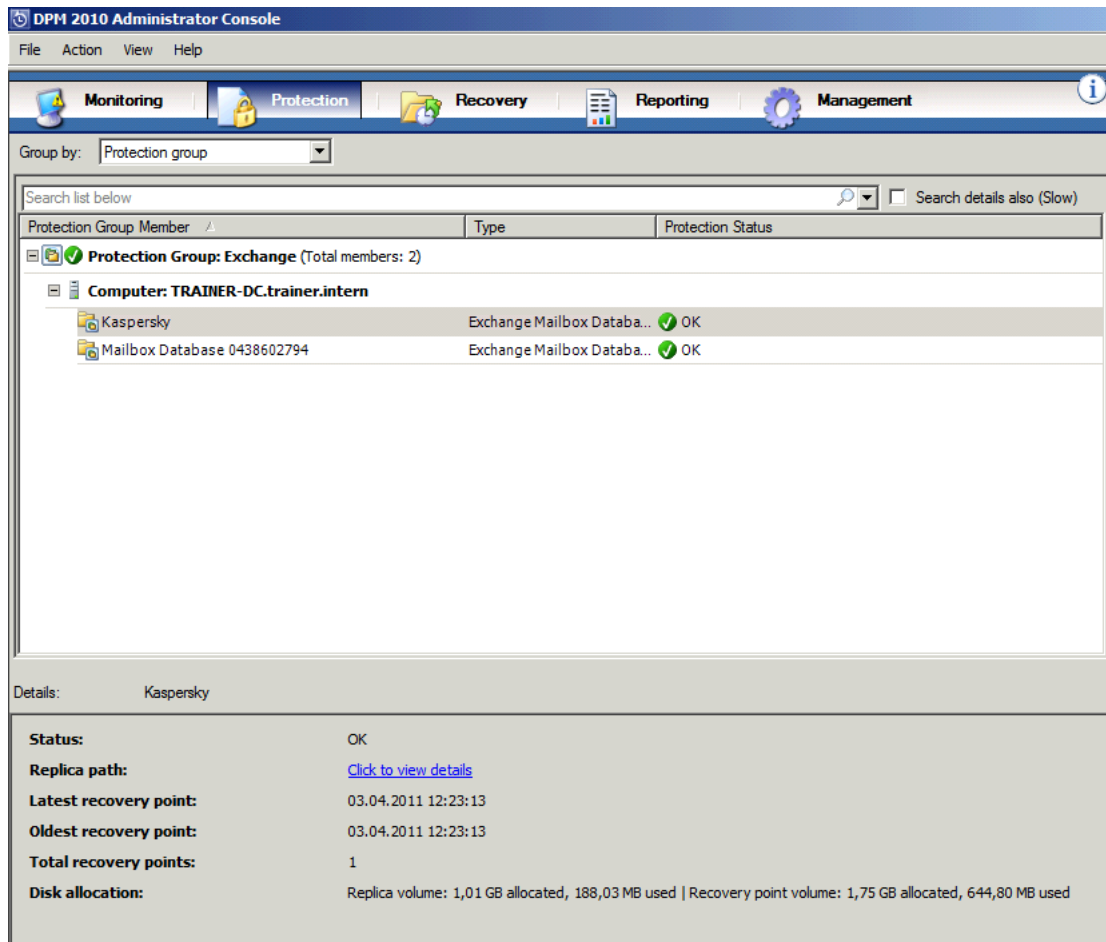
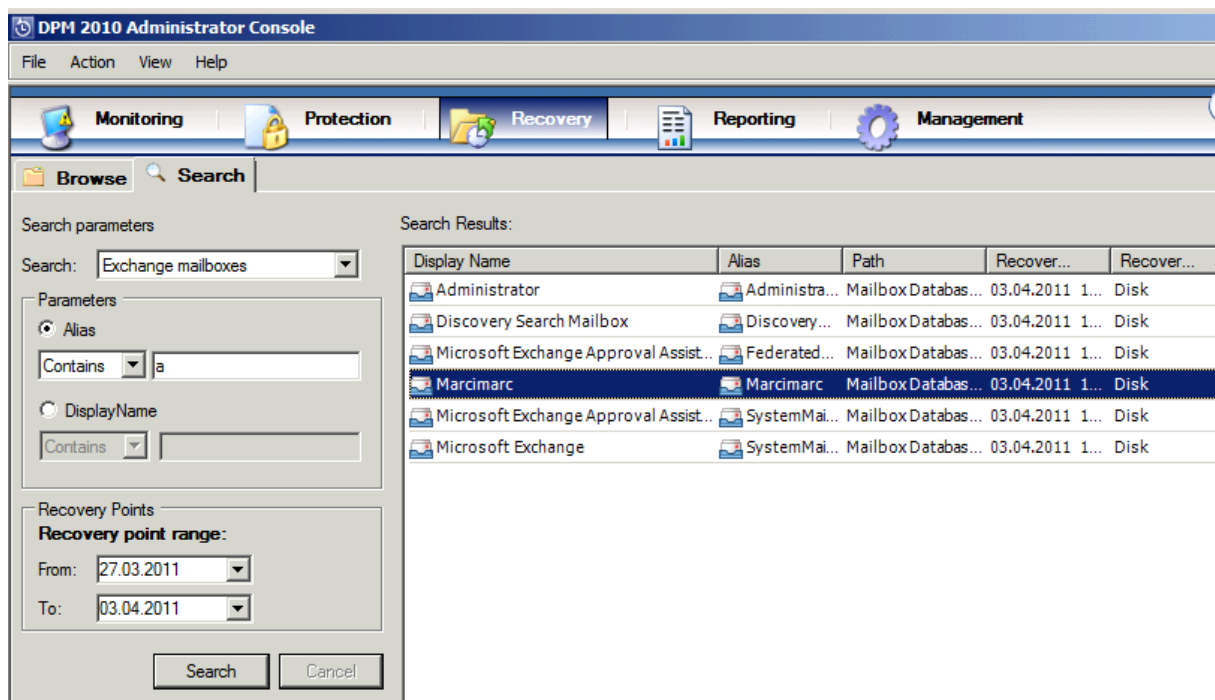


Exchange 2010 Restore mit DPM

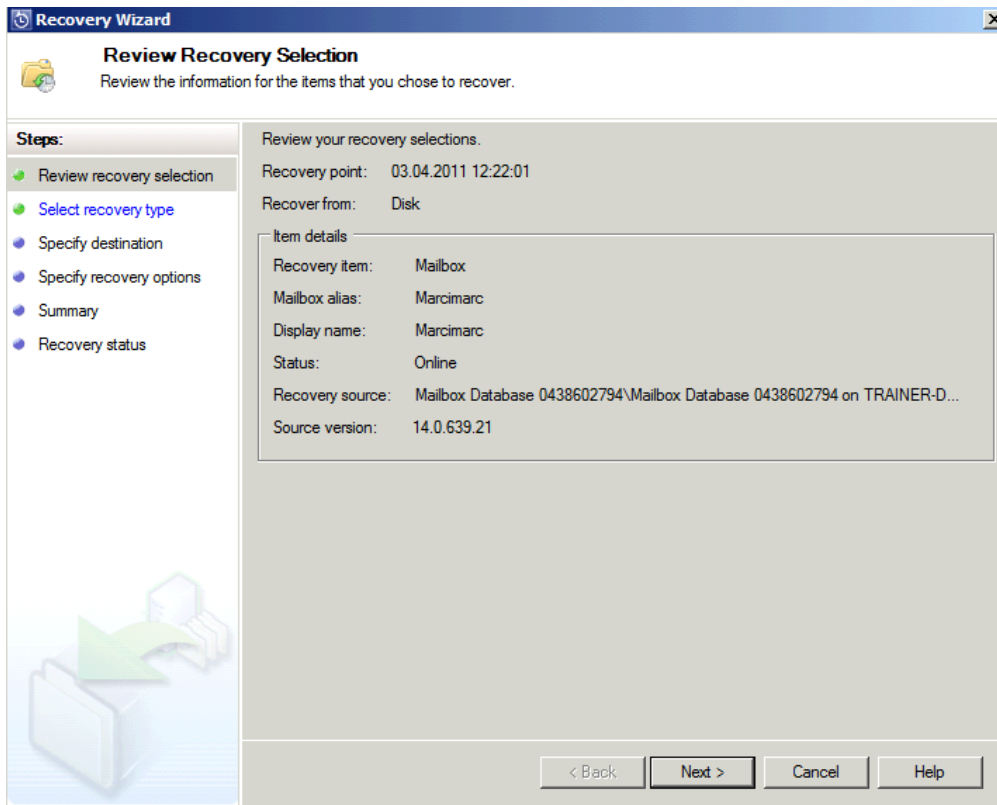
Gesicherte DPM Datenbanken



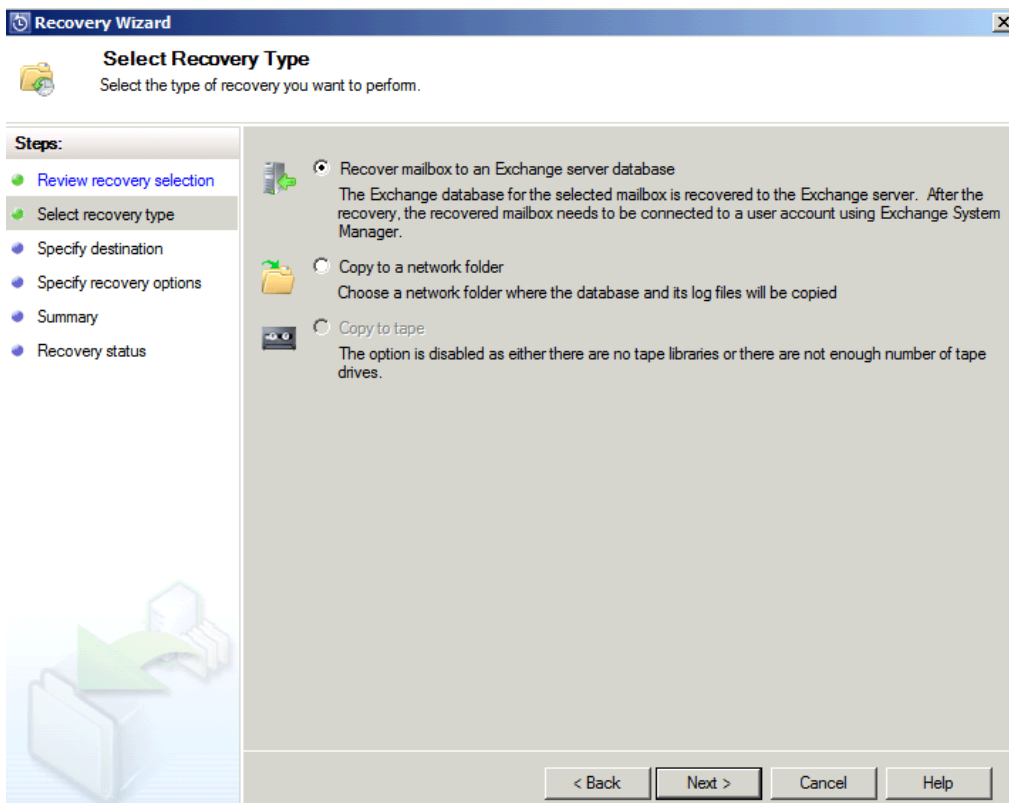
Mailbox fuer die Wiederherstellung auswaehlen



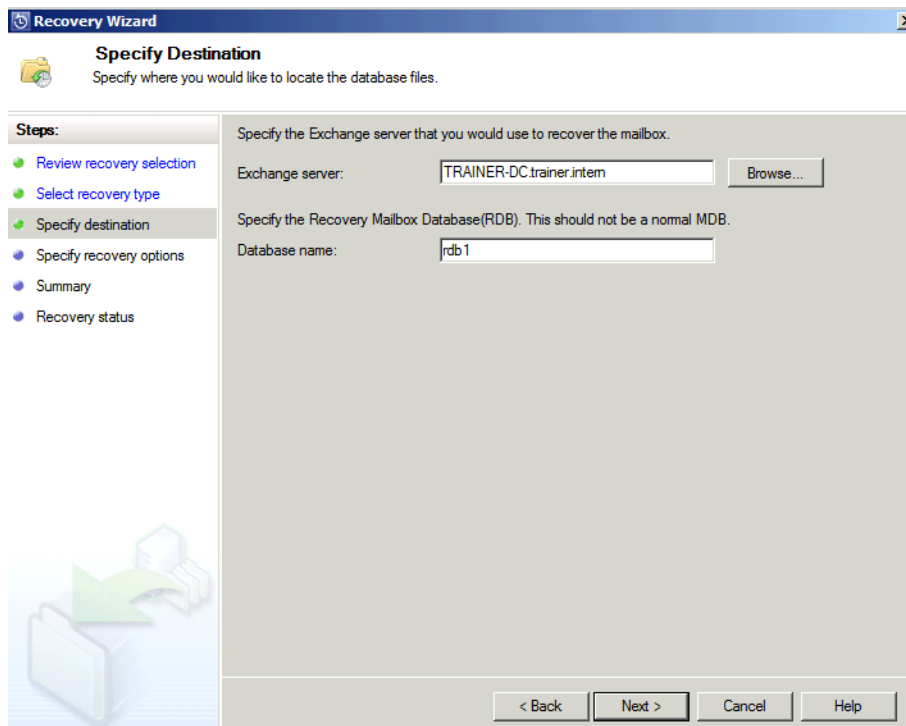
Starten



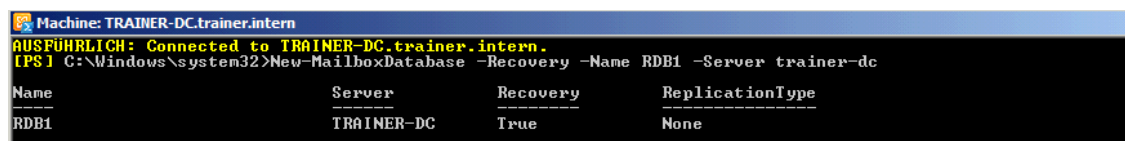
Exchange auswählen



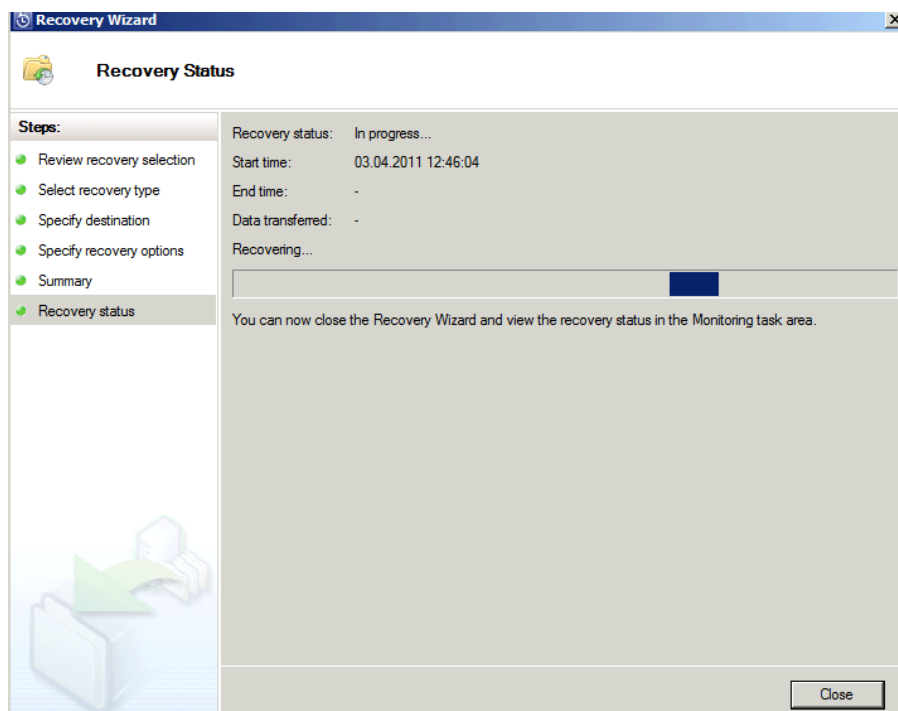
Recovery Database auswählen (muss vorher auf dem Exchange angelegt werden)



RDB anlegen



Mailbox Recovery



Mailbox oder Inhalte mit Exchange wiederherstellen

```
[PS] C:\Windows\system32>restore-Mailbox -Identity marcimarc -RecoveryDatabase RDB1

Bestätigung
Möchten Sie diese Aktion wirklich ausführen?
Recovering mailbox content from mailbox 'Marcimarc' in the recovery database 'RDB1' to the mailbox for 'Marcimarc
(Marcimarc@kaspersky.de)'. This operation may take a long time to complete.
[J] Ja [A] Ja, alle [N] Nein [K] Nein, keine [?] Hilfe (Standard ist "J"): j

RunspaceId          : 75dd7900-acc3-4d72-bced-4dfba0cf3699
Identity            : trainer.intern/NWIT/Marcimarc
DistinguishedName   : CN=Marcimarc,OU=NWIT,DC=trainer,DC=intern
DisplayName         : Marcimarc
Alias               : Marcimarc
LegacyExchangeDN    : /o=ExOrg/ou=Exchange Administrative Group (FYDIBOHF23SPDLT)/cn=Recipients/cn=Marcima
rc
PrimarySmtpAddress  : Marcimarc@kaspersky.de
SourceServer        : TRAINER-DC.trainer.intern
SourceDatabase      : RDB1
SourceGlobalCatalog : TRAINER-DC
SourceDomainController :
TargetGlobalCatalog : TRAINER-DC
TargetDomainController :
TargetMailbox       : trainer.intern/NWIT/Marcimarc
TargetServer        : TRAINER-DC.trainer.intern
TargetDatabase      : Mailbox Database 0438602794
MailboxSize         : 6.72 KB (6.932 bytes)
```

Weitere Infos:

<http://technet.microsoft.com/en-us/library/ee332351.aspx>