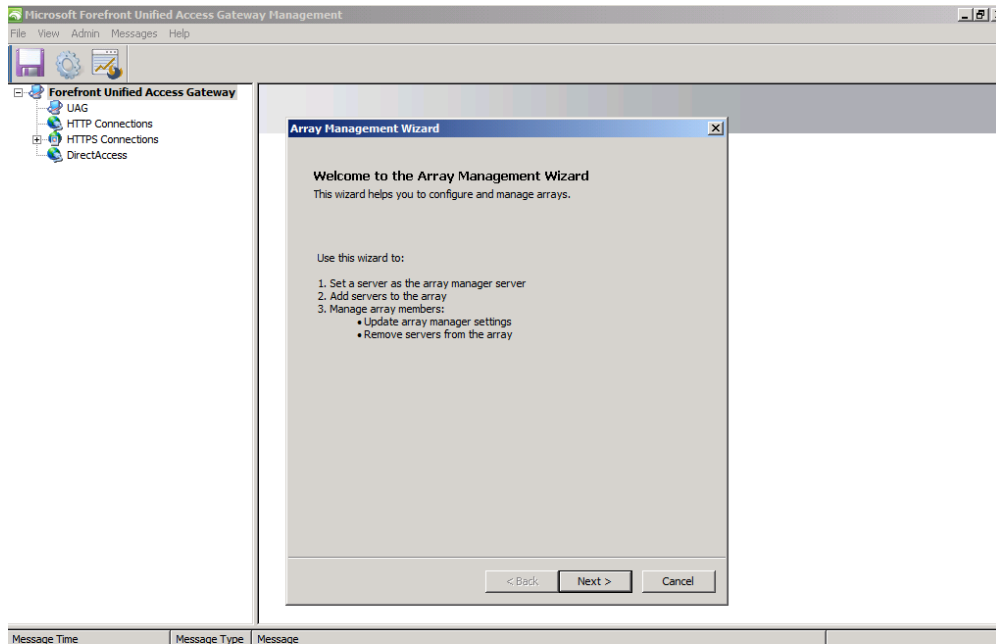
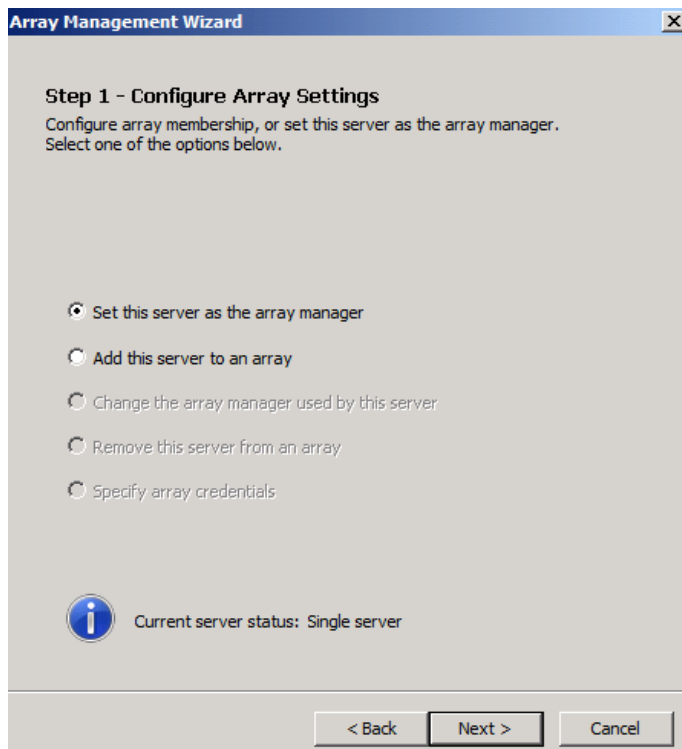


# Forefront UAG Array und NLB

## Array Management Wizard starten



## Ersten Server als Array Manager festlegen



## Array Credentials

**Array Management Wizard** [X]

**Step 2 - Specify Array Credentials**  
Specify the credentials used to connect to storage and to retrieve server-specific settings from array members.

Credentials

User name:

Password:

Confirm password:

Domain:

< Back   Next >   Cancel

## Array Manager festlegen

**Array Management Wizard** [X]

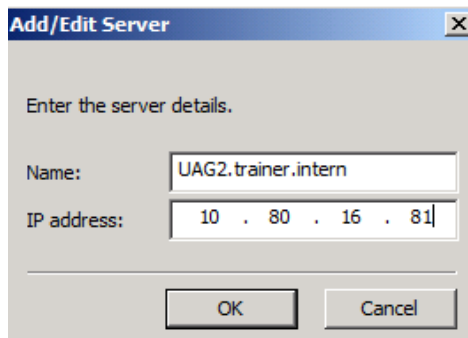
**Step 3 - Defining Array Member Computers**  
Add the Forefront Unified Access Gateway servers that will be configured as array members and managed by this array manager server.

Name	IP Address	Status
UAG	10.80.16.79	Array manager

Add...   Remove

< Back   Next >   Cancel

## Zweiten UAG Server als Array Mitglied hinzufuegen



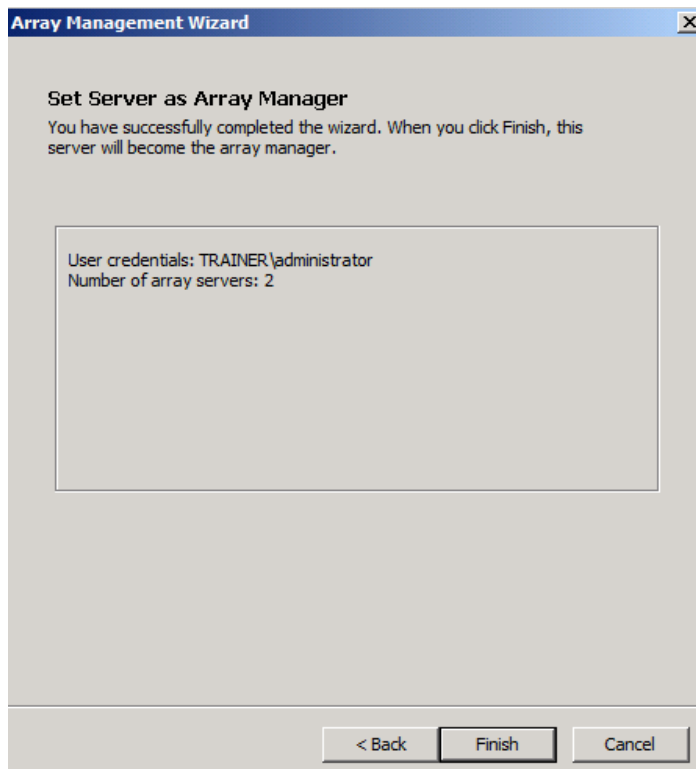
**Add/Edit Server** [X]

Enter the server details.

Name:

IP address:

## Zusammenfassung



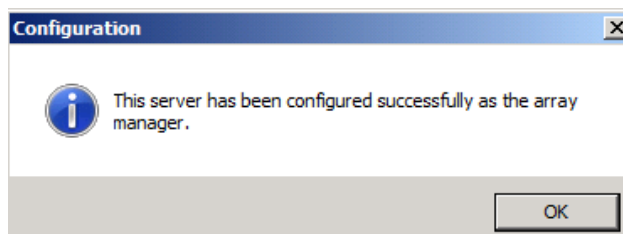
**Array Management Wizard** [X]

**Set Server as Array Manager**


You have successfully completed the wizard. When you click Finish, this server will become the array manager.

User credentials: TRAINER\administrator  
Number of array servers: 2

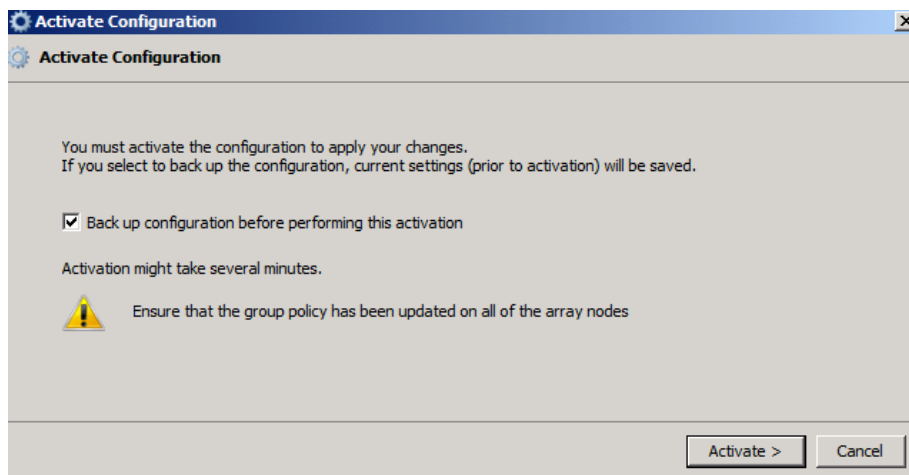
## Server ist jetzt Array Manager



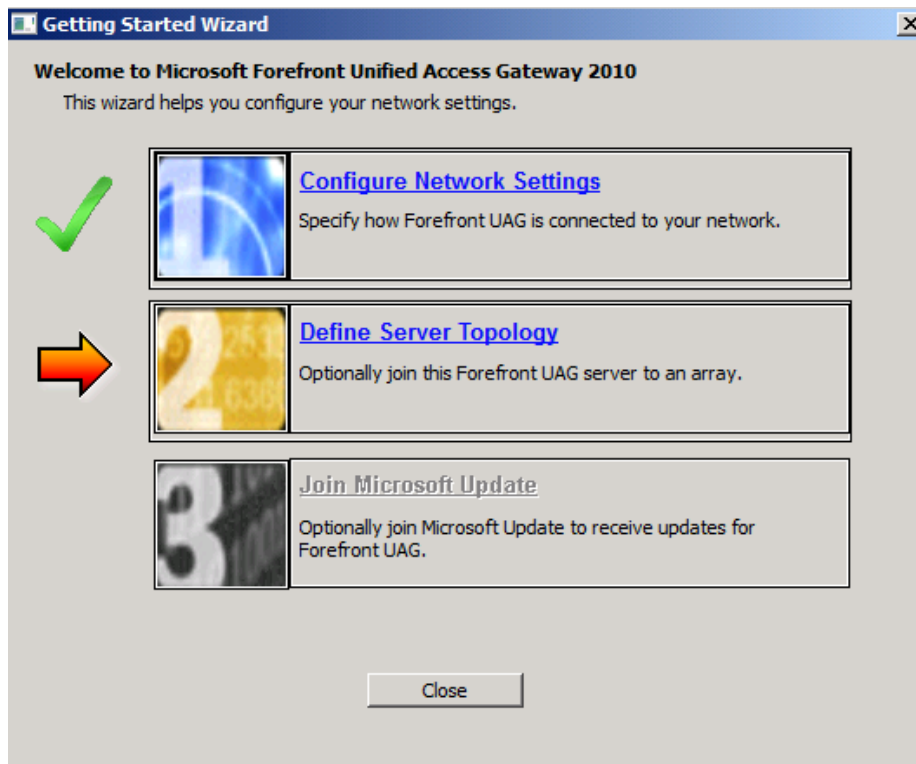
**Configuration** [X]

 This server has been configured successfully as the array manager.

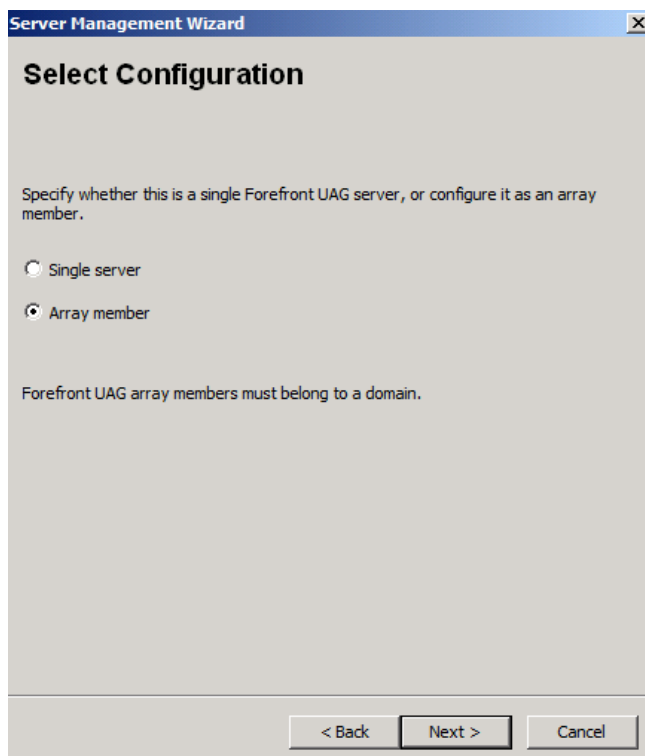
## Konfig speichern und aktivieren



## Auf dem zweiten UAG Knoten



## Array Management starten



**Server Management Wizard** [X]

### Select Configuration

Specify whether this is a single Forefront UAG server, or configure it as an array member.

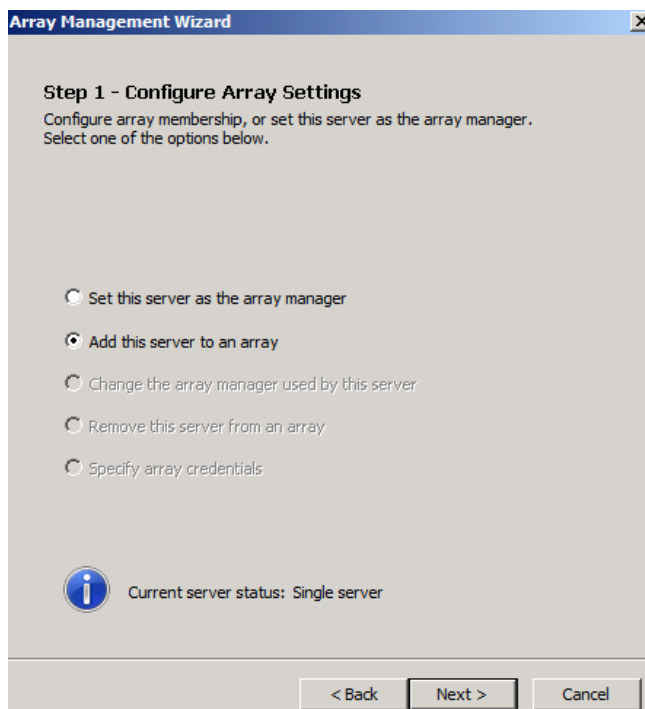
Single server

Array member

Forefront UAG array members must belong to a domain.

< Back   Next >   Cancel

## Server zum Array hinzufuegen



**Array Management Wizard** [X]

### Step 1 - Configure Array Settings

Configure array membership, or set this server as the array manager. Select one of the options below.


Set this server as the array manager

Add this server to an array

Change the array manager used by this server

Remove this server from an array

Specify array credentials

 Current server status: Single server

< Back   Next >   Cancel

## Array Manager auswahlen


**Array Management Wizard** [X]

**Step 2 - Select Array Manager**  
Select the array manager, and specify the credentials used to connect to it.

Array manager (IP address or FQDN):

**User credentials**  
Enter a user account that has administrator permissions on every array member. It is recommended that you use an account with a long expiry period.

User name:   
Password:   
Domain:

 Make sure that you have added this server to the list of array members on the array manager.

< Back   Next >   Cancel

## Server zum Array hinzufuegen

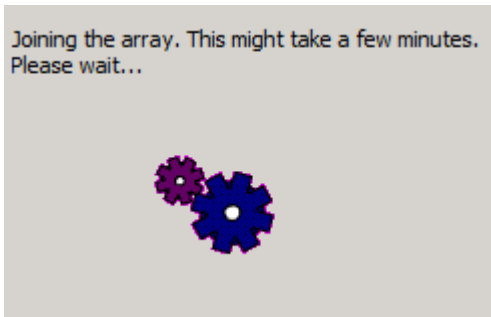
**Array Management Wizard** [X]

**Joining the Array**  
You have successfully completed the wizard. When you click Finish, this server connects to the array manager using the settings provided.

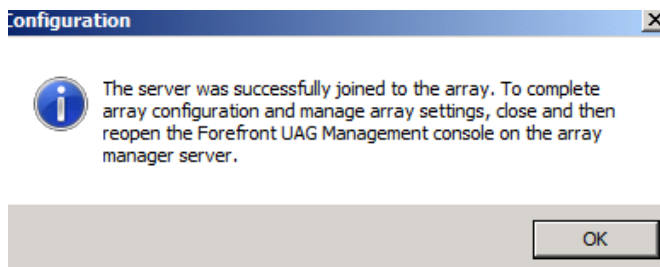
Array manager: UAG  
Automatic backup  
Array credentials: trainer.intern\administrator

< Back   Finish   Cancel

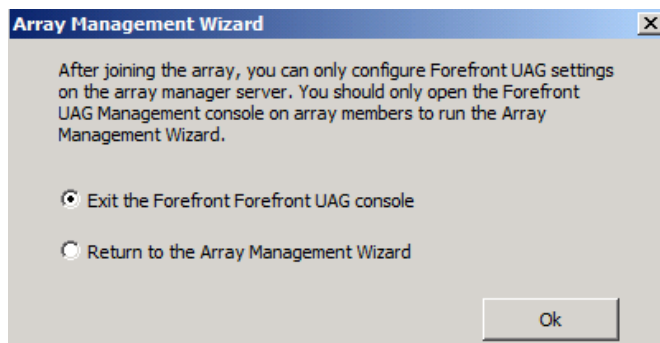
## Array Join



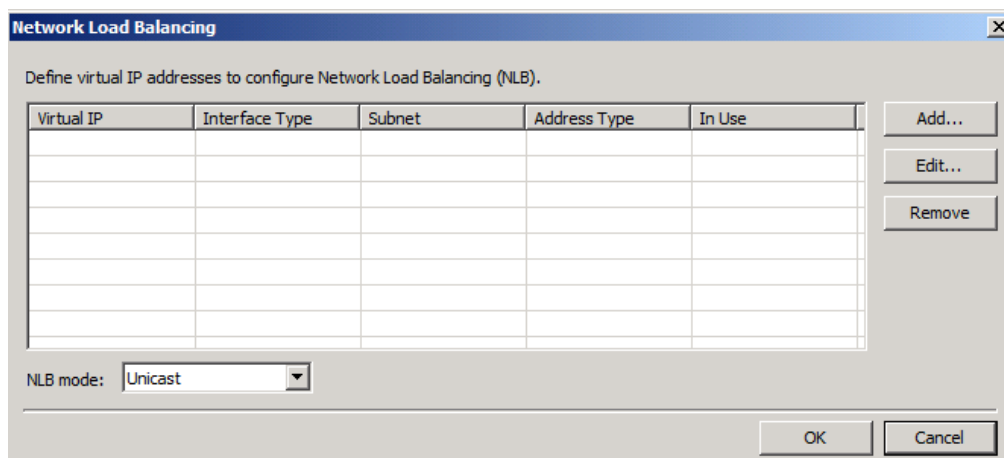
Erfolgreich. UAG Konsole schliessen und neu starten



UAG Array Verwaltung nur über den Array Manager ☹



## NLB einrichten



**Configure Virtual IP Addresses** [X]

Select a network and define virtual IP addresses.

Network:

IPv4

Virtual IP address:

Subnet mask:

IPv6

Virtual IP address:

Subnet prefix:

### Array IP NLB Konfig

**Network Load Balancing** [X]

Define virtual IP addresses to configure Network Load Balancing (NLB).

Virtual IP	Interface Type	Subnet	Address Type	In Use
10.80.16.222	Internal	255.255.252.0	IPv4	No
212.212.10.222	External	255.255.255.0	IPv4	Yes

NLB mode:



## Outlook Web App Trunk auf integriertes NLB umstellen

The screenshot shows the OutlookWebApp configuration console. The 'External Web site' section is active, showing 'Use integrated NLB' selected with a virtual IP of 212.212.10.222. The 'Applications' table lists 'OutlookWebApp' as a Microsoft Exchange Server application. The 'Initial Internal Application' is set to 'OutlookWebApp'. The 'Trunk Configuration' section has a 'Configure...' button.

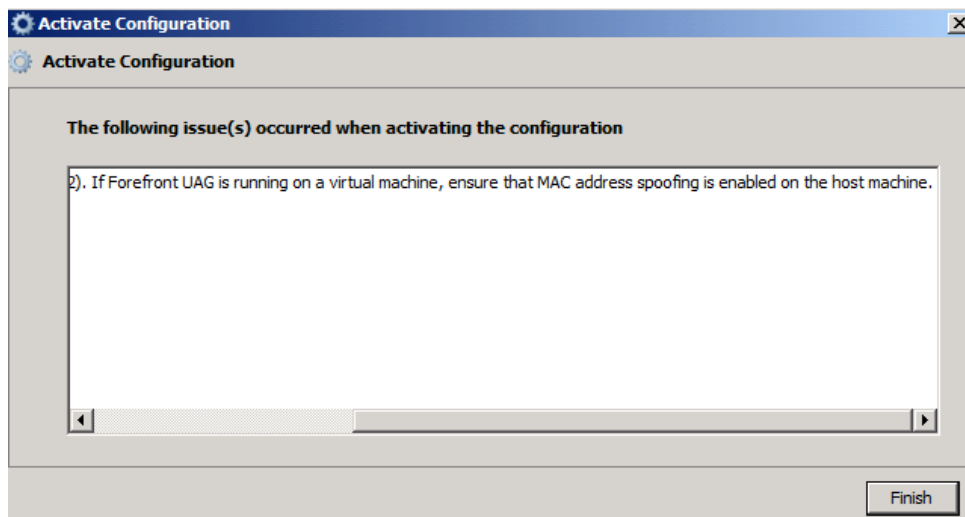
Application Name	Application Type
Portal	Portal
OutlookWebApp	Microsoft Exchange Server ...
ads	Local Drive Mapping

Array Member	IP
UAG (local)	212.212.10.4
UAG2	*.*.*.*

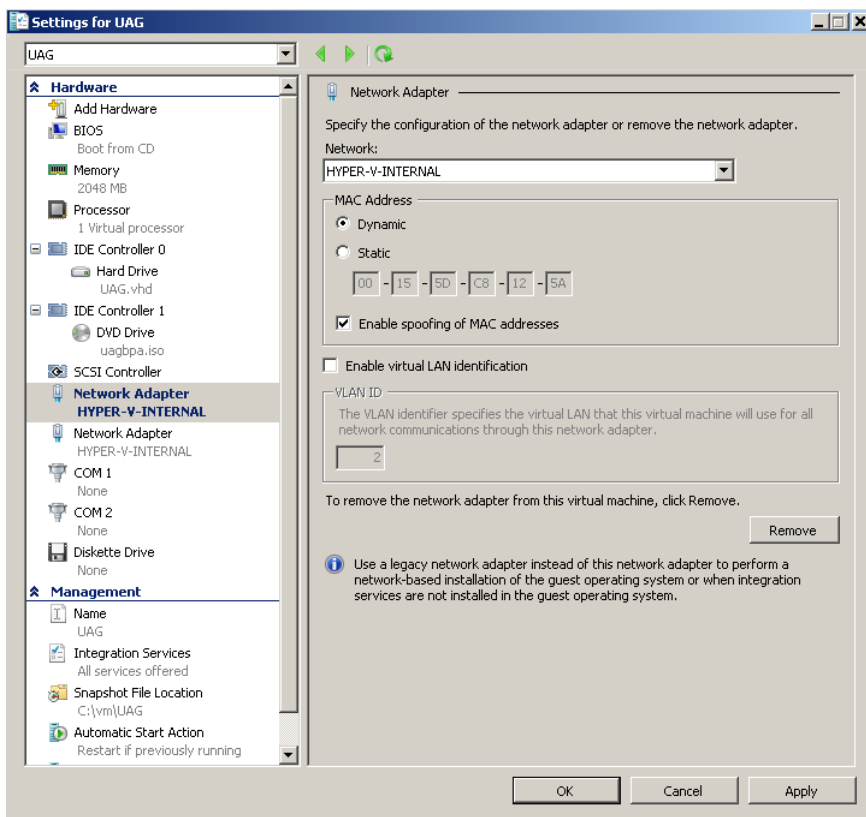
Subnet Address	Subnet Mask
----------------	-------------

Konfig speichern und aktivieren

Ah, gut mitgedacht. DA UAG in meinem Hyper-V laeuft, muss das MAC Spoofing aktiviert werden

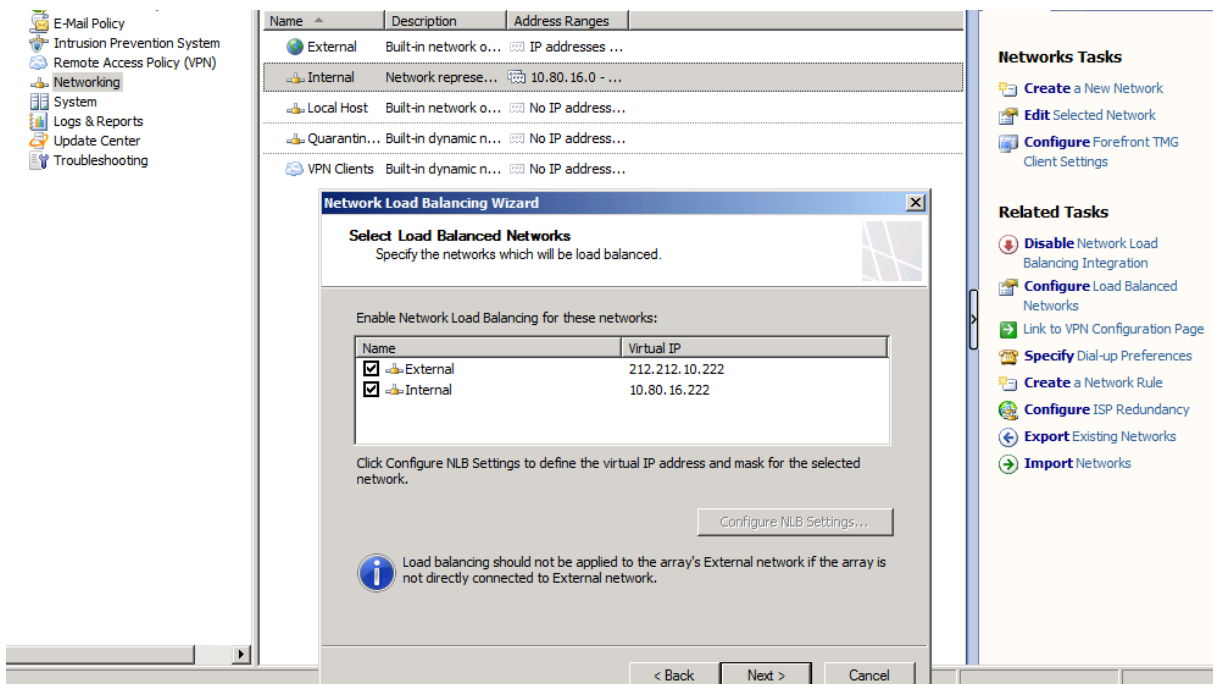


Also, die beiden UAG Server herunterfahren und dann die Konfig aendern

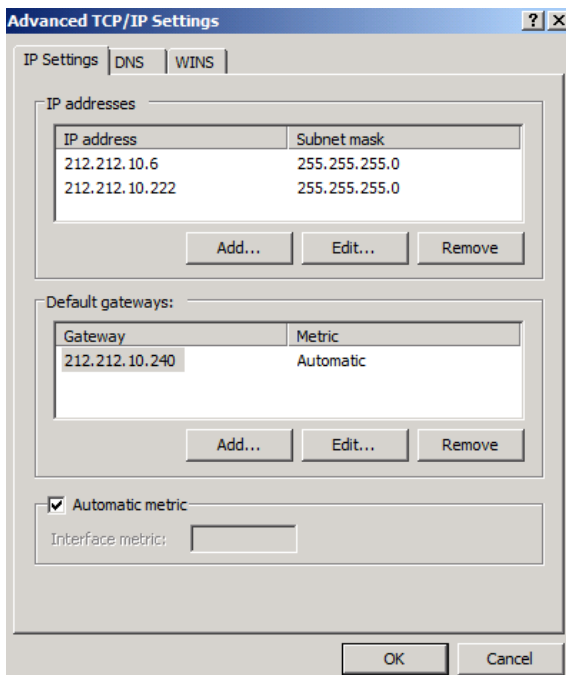
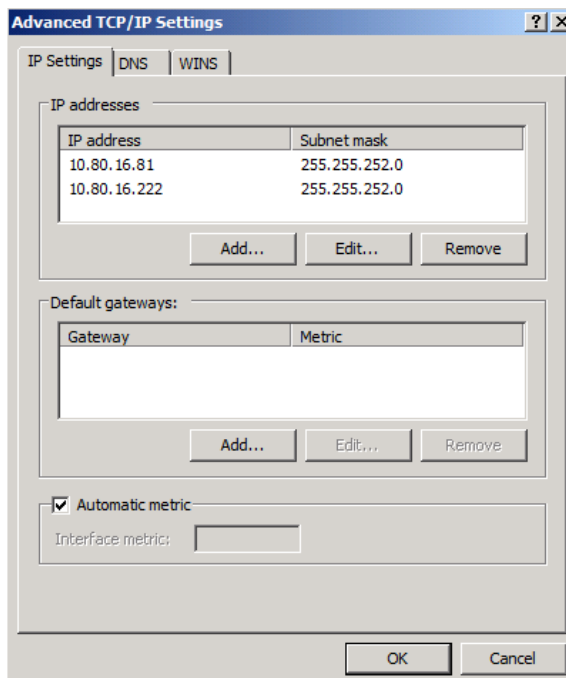


Server neu booten und die Konfiguration wieder aktivieren

NLB in TMG aktiviert



In den NIC Settings auch



Fertig

Jetzt noch die Anpassungen im DNS vornehmen und Happy NLBing 😊