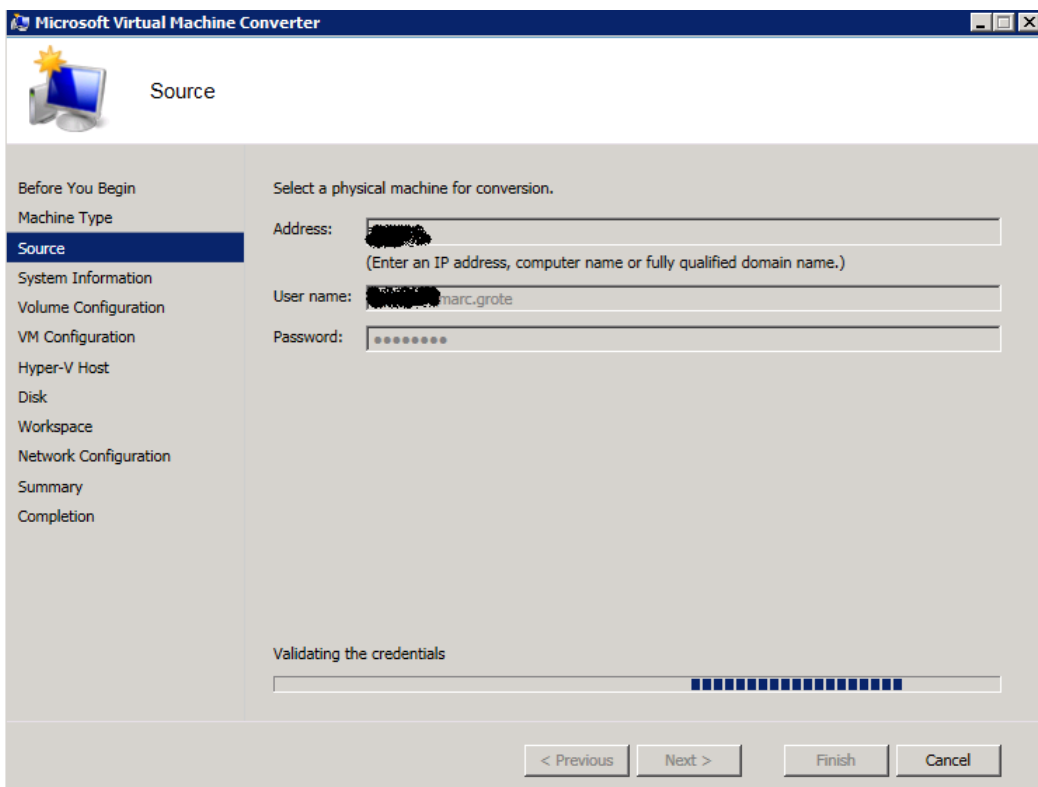
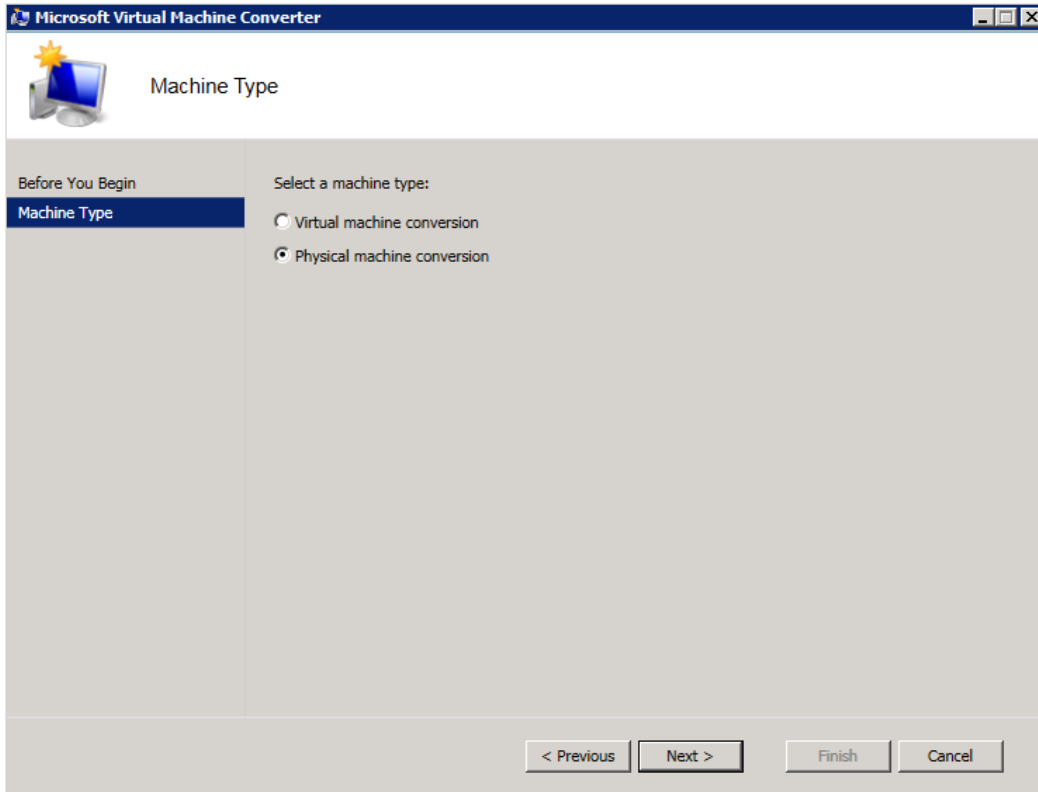


MVMC 3.0

Download:

http://www.microsoft.com/en-us/download/details.aspx?id=42497&WT.mc_id=Blog_ServerCloud_Announce_TTD



Microsoft Virtual Machine Converter

System Information

Before You Begin
Machine Type
Source
System Information
Volume Configuration
VM Configuration
Hyper-V Host
Disk
Workspace
Network Configuration
Summary
Completion

To gather system information, MVMC temporarily installs an agent on the source machine. Click Scan System to install the agent and begin gathering system information.

Source: _____

Scan System

System Information

Operating System
OS Version: Microsoft Windows Server 2008 R2 Enterprise

Processor
Count: 4

Hard Drives
Volume E 1.863,00 GB
Volume H 100,00 MB
Volume G 1.397,00 GB
Volume C 196,00 GB
Volume D 735,00 GB

Network Adapters
Realtek PCIe GBE Family Controller
Realtek PCIe GBE Family Controller
Realtek PCI GBE Family Controller

< Previous Next > Finish Cancel

Microsoft Virtual Machine Converter

Volume Configuration

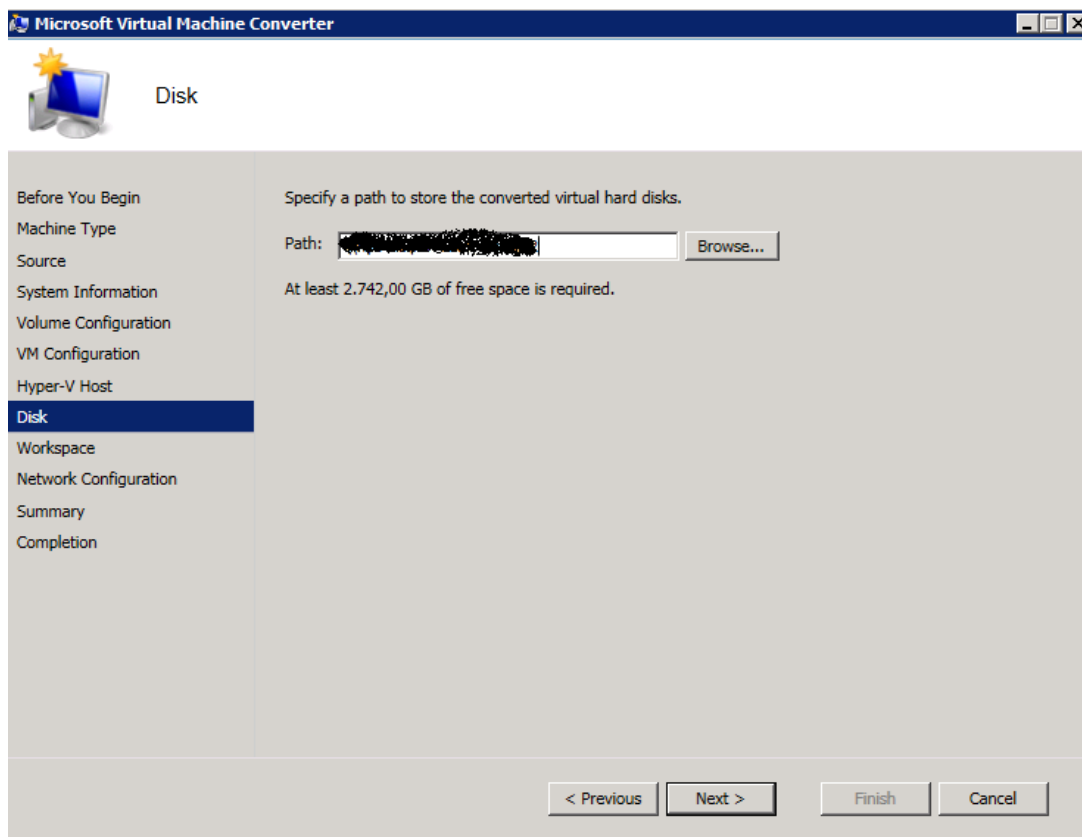
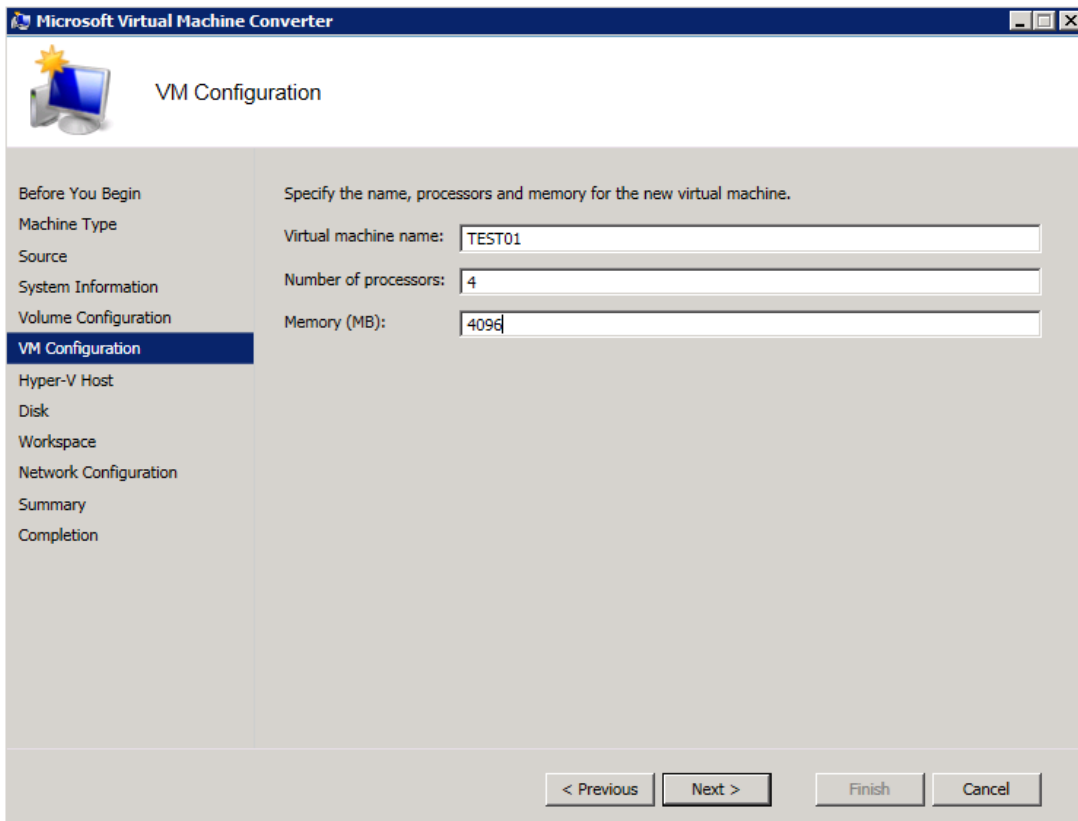
Before You Begin
Machine Type
Source
System Information
Volume Configuration
VM Configuration
Hyper-V Host
Disk
Workspace
Network Configuration
Summary
Completion

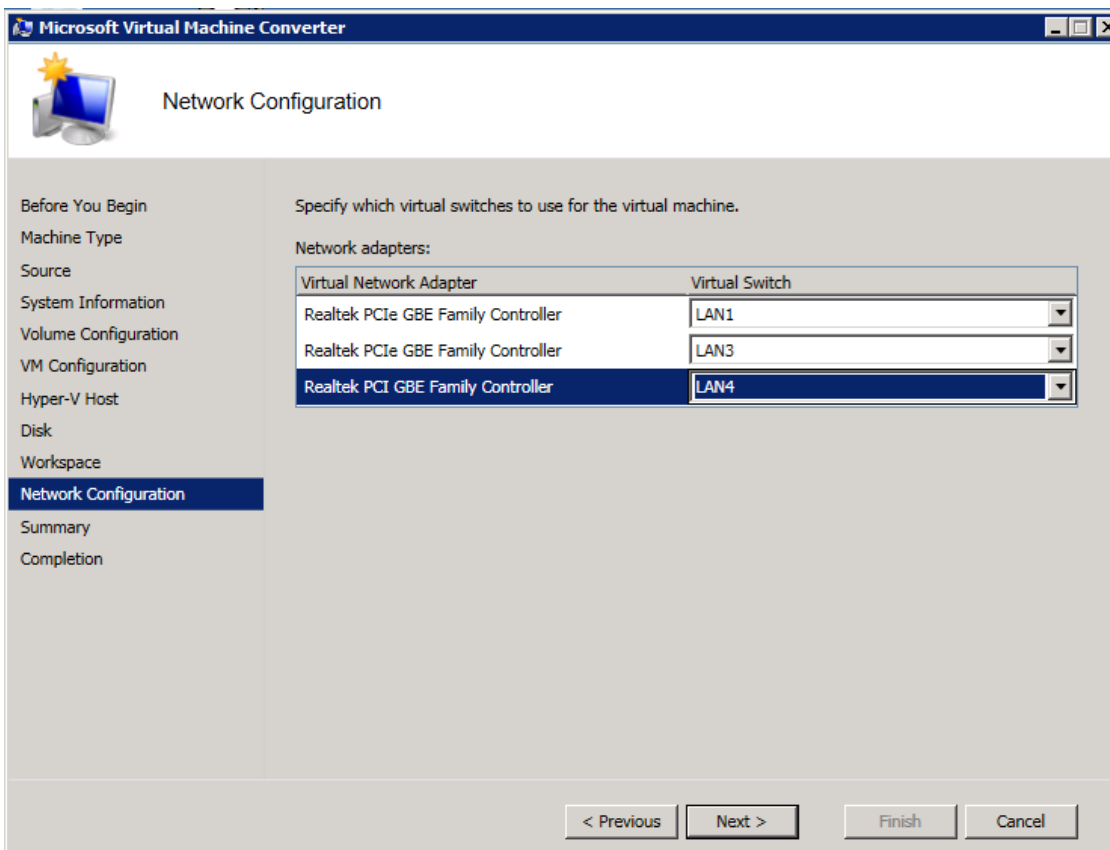
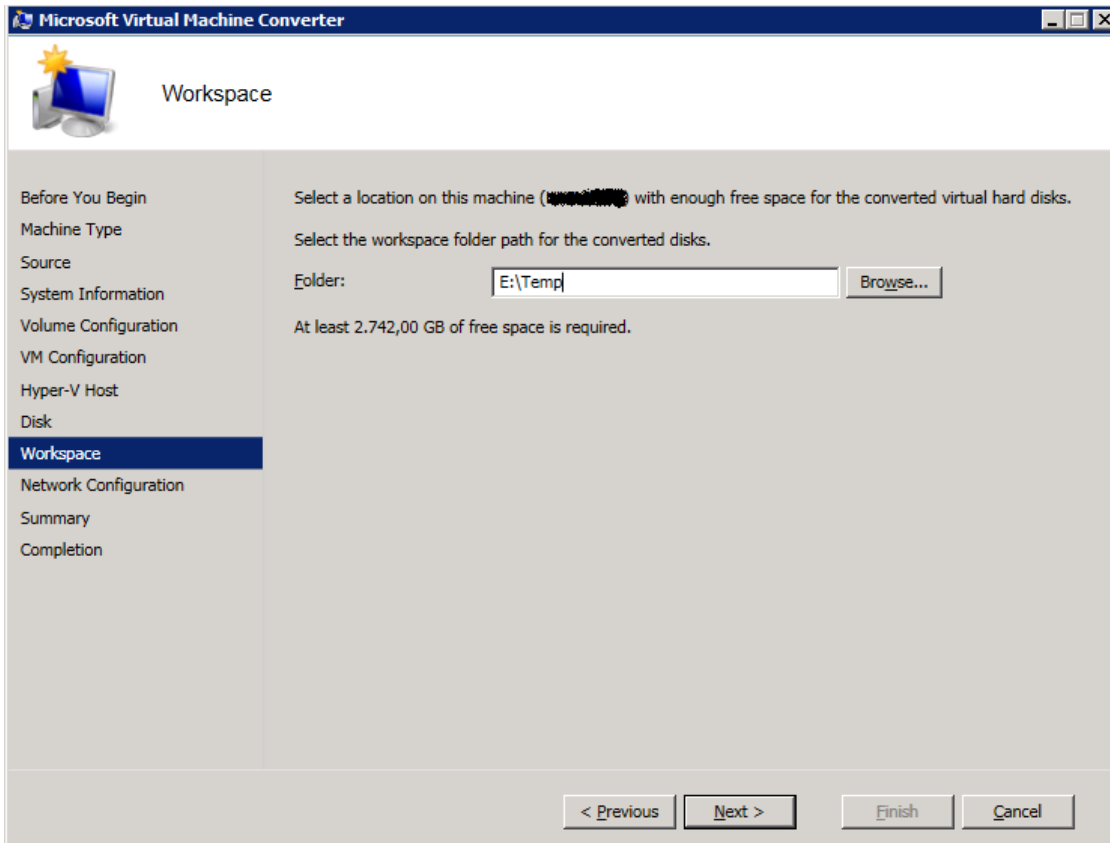
Select volumes to include in the conversion. A virtual hard disk (.vhd) will be created for each selected volume. Specify the size, disk type and channel to which to attach the .vhd.

Volumes:

Volume	Data Size
<input checked="" type="checkbox"/> [Redacted]	1.863,00 GB
<input checked="" type="checkbox"/> System-reserviert (:)	100,00 MB
<input checked="" type="checkbox"/> [Redacted] (H:)	39,00 MB
<input checked="" type="checkbox"/> [Redacted] (G:)	1.397,00 GB
<input checked="" type="checkbox"/> [Redacted] (C:)	196,00 GB
<input checked="" type="checkbox"/> [Redacted] (D:)	735,00 GB

< Previous Next > Finish Cancel







Summary

Before You Begin

Machine Type

Source

System Information

Volume Configuration

VM Configuration

Hyper-V Host

Disk

Workspace

Network Configuration

Summary

Completion

Review the details and click Finish to start conversion.

Source: [REDACTED]

Virtual machine: TEST01

Destination: [REDACTED]

Destination VHD path: [REDACTED]

< Previous

Next >

Finish

Cancel