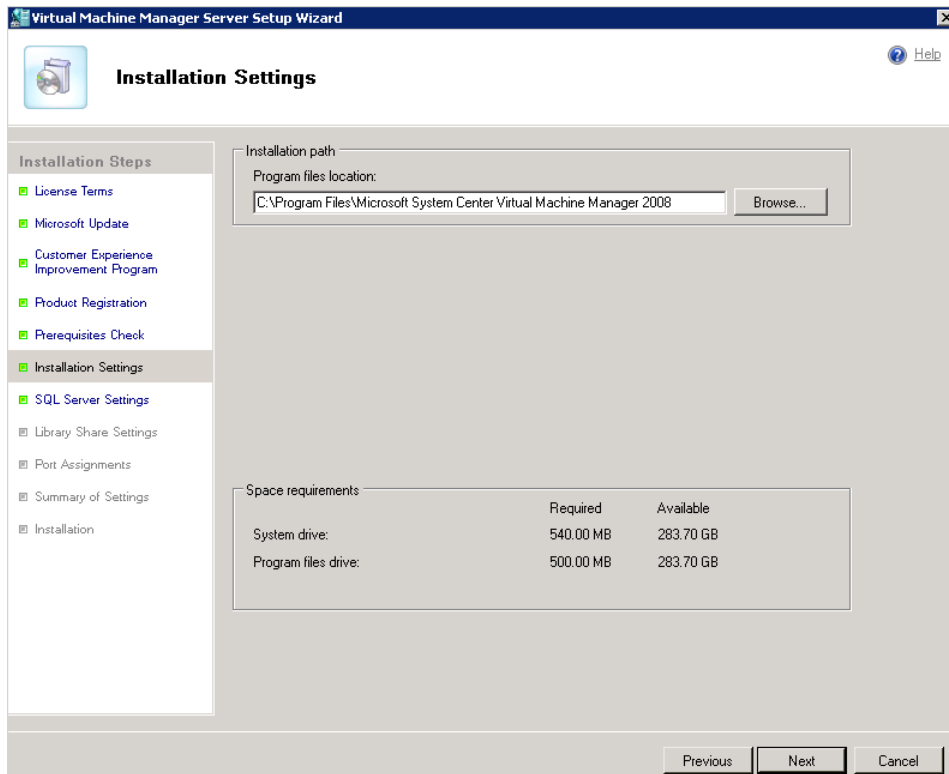


System Center Virtual Machine Manager 2008 Beta

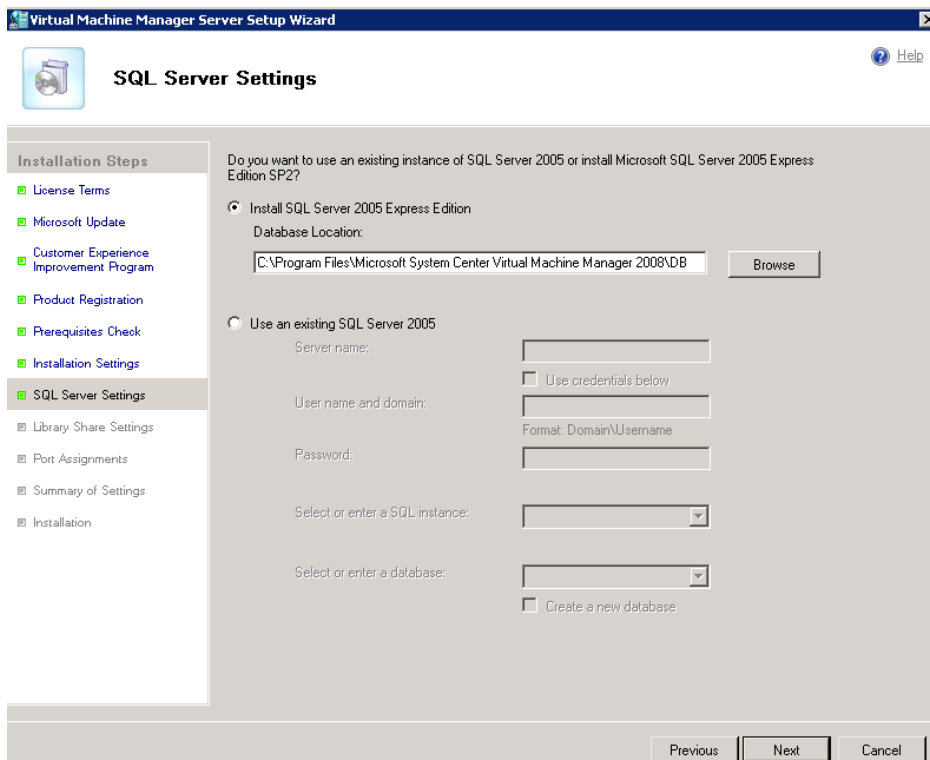
Vorher Update installieren, damit SCVMM 2008 auch mit Hyper-V RC1 funzt, sonst stuerzt die Administrator Konsole beim Hostzugriff dauernd ab

Installation der Komponenten





Lokale SQL DB oder Remote



Virtual Machine Manager Server Setup Wizard

Library Share Settings

Specify a default share for the Virtual Machine Manager library. The library makes resources available for creating virtual machines. The Setup wizard creates a default library share on the Virtual Machine Manager server. You can later add other library servers.

Create a new library share

New library share

Share name:

Share location:

Share description:

Use an existing library share

Existing library share

Share name:

Share location:

Share description:

[About the Virtual Machine Manager library](#)

Port Assignments

Virtual Machine Manager Server Setup Wizard

Port Assignments

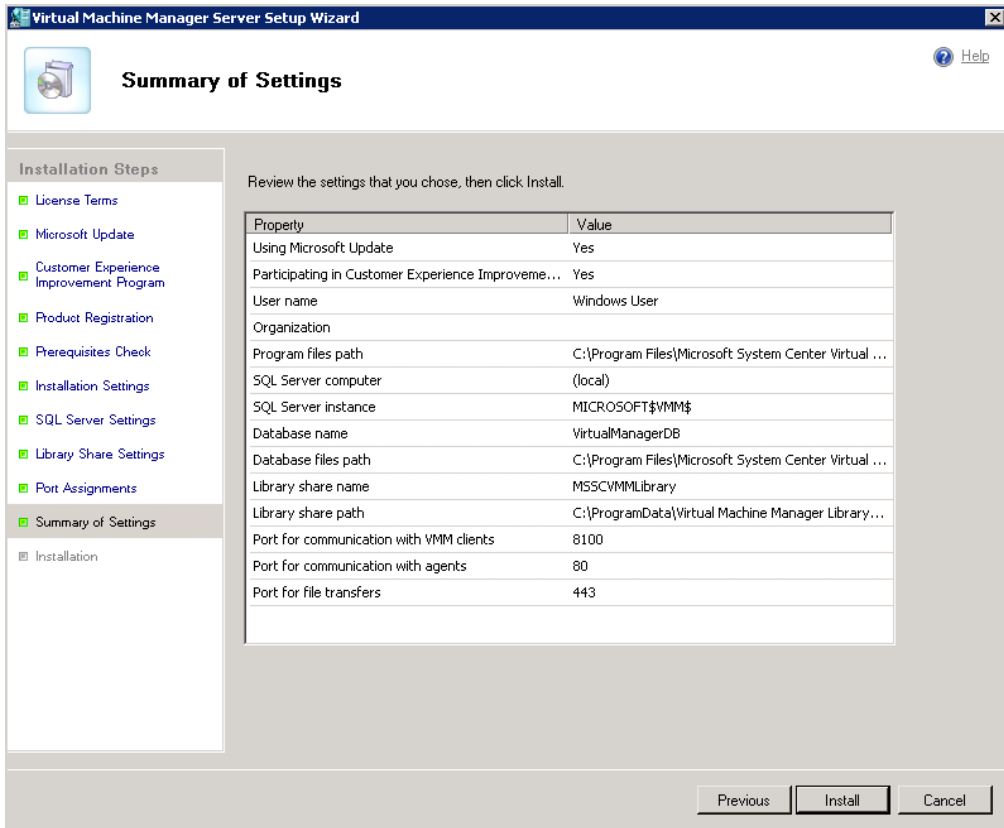
Specify which ports to use for the following types of connection:

- VMM Administrator Console's connection to the VMM server
- VMM server's connections to agents on hosts and library servers
- File transfers to and from hosts and library servers

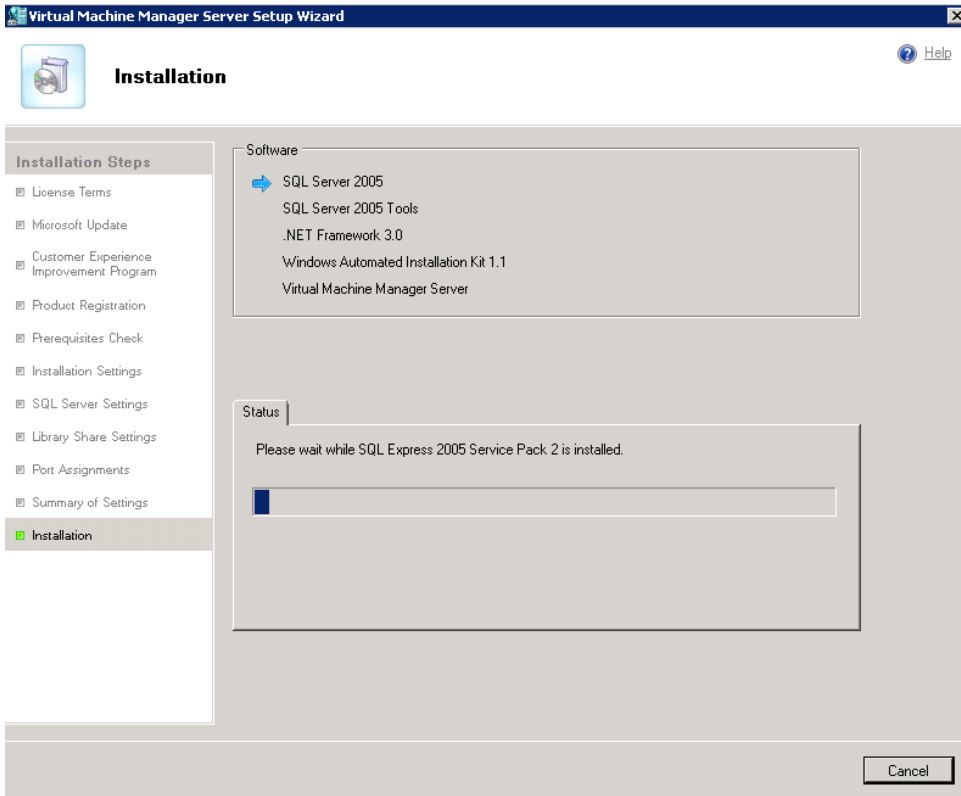
	Port
VMM server connection:	<input type="text" value="8100"/>
Agent connections (hosts and library servers):	<input type="text" value="80"/>
File transfers:	<input type="text" value="443"/>

[More about port assignments](#)

If Windows Firewall is turned on, the wizard will attempt to add a firewall exception for each port.

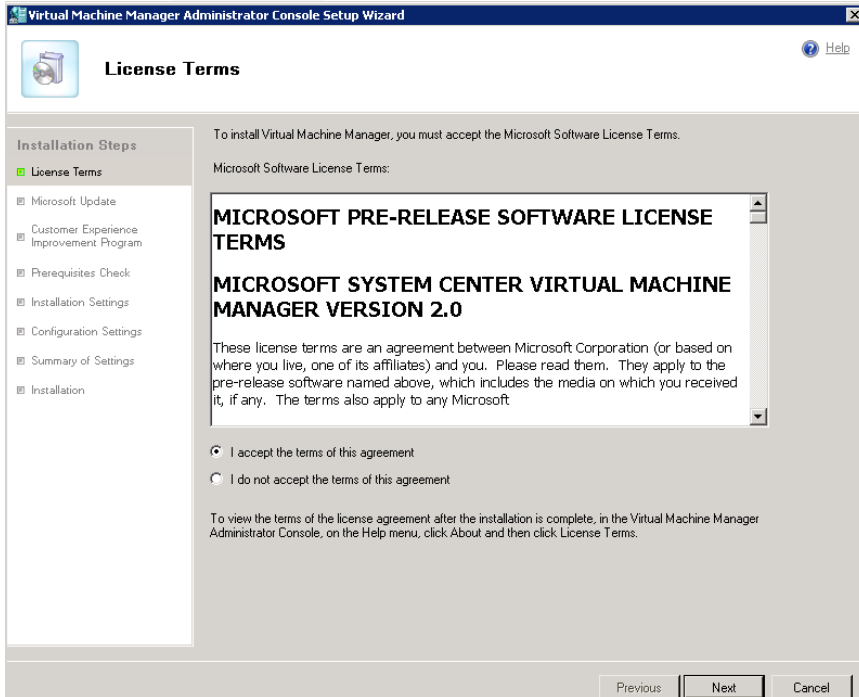


Es geht ab

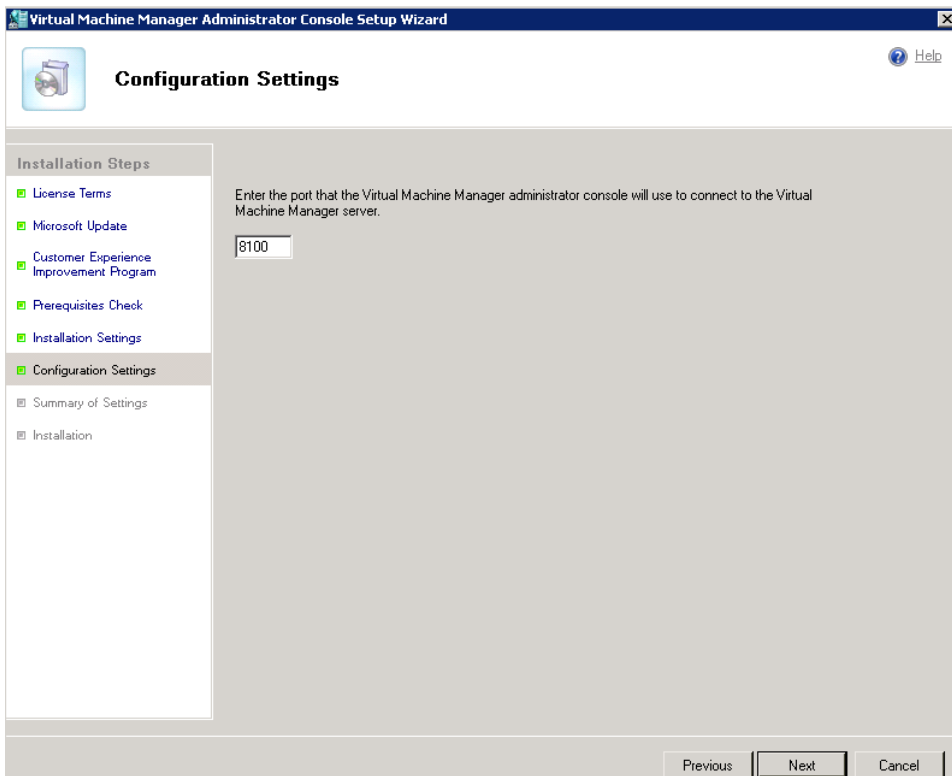


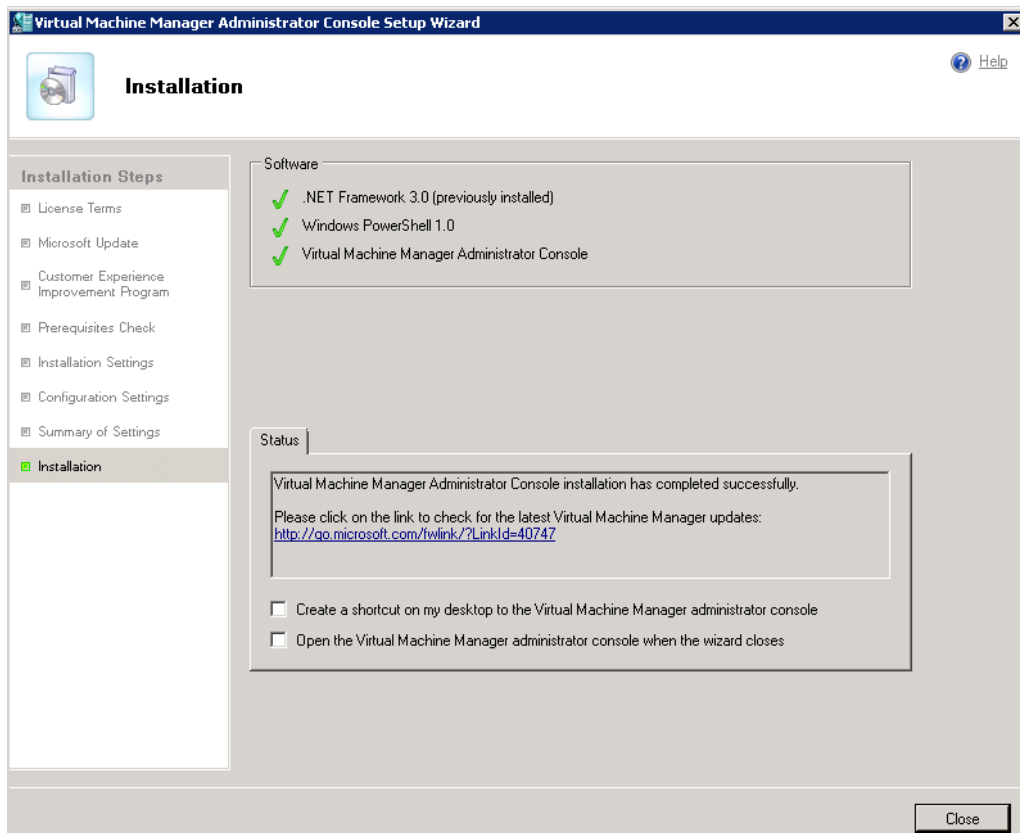
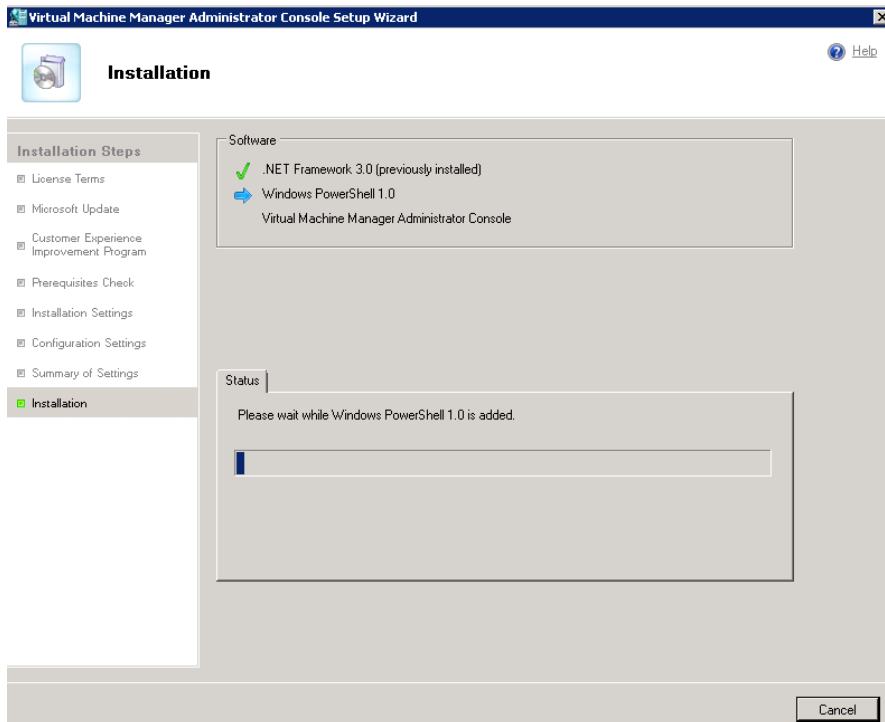
WAIK Error

WAIK fuer Windows Vista SP1 und Windows Server 2008 downloaden und installieren
SCVMM Administrator Konsole installieren



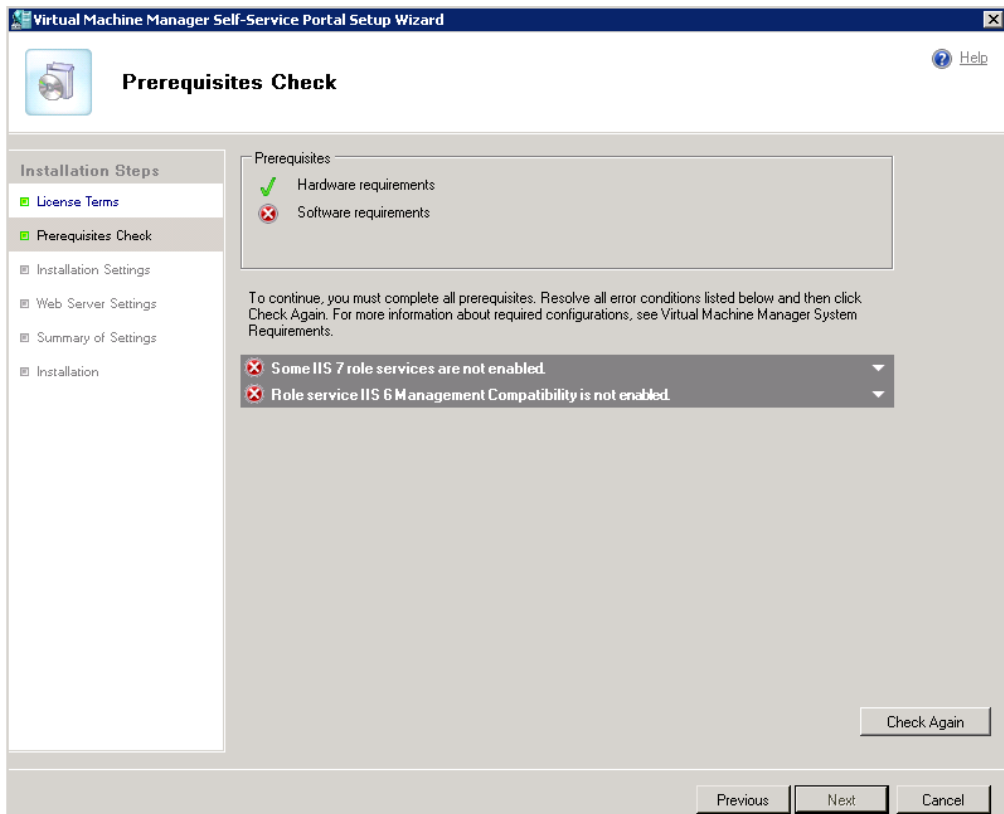
Admin Port



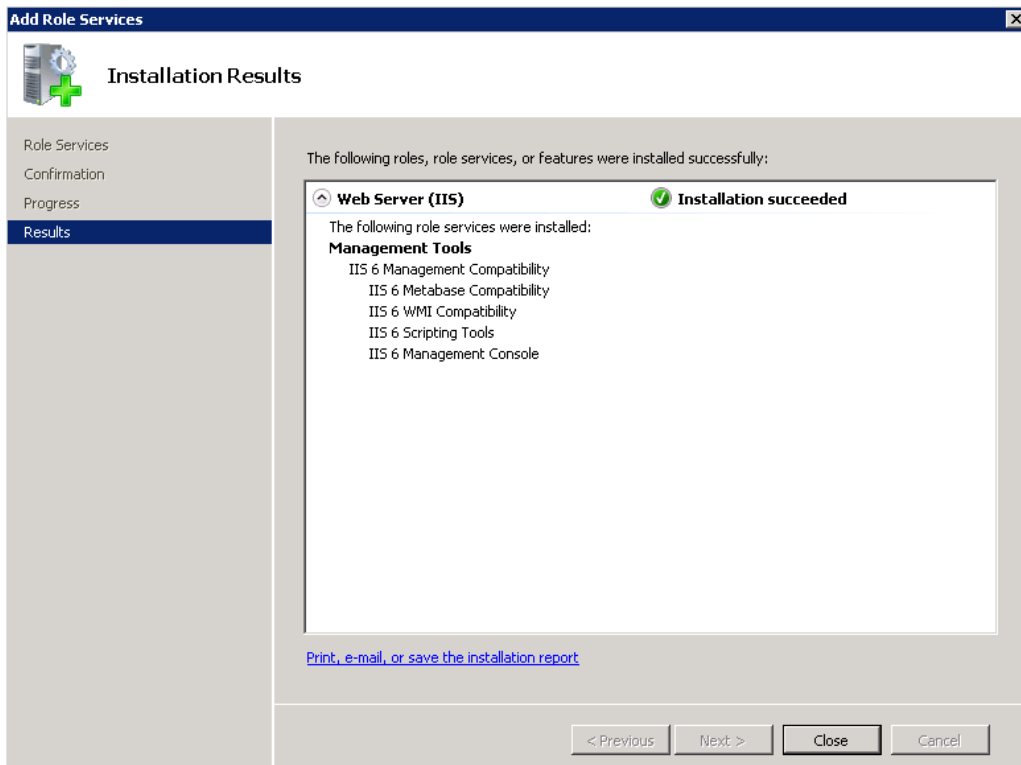


Self Service Portal installieren

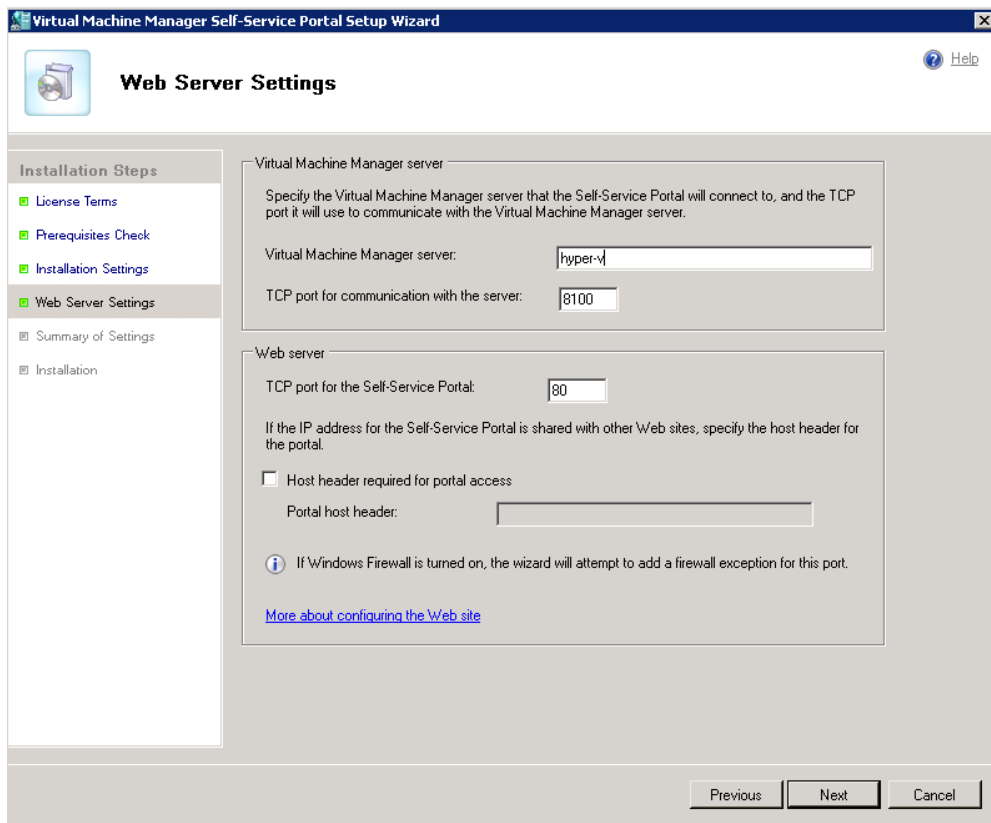
IIS Komponenten fehlen



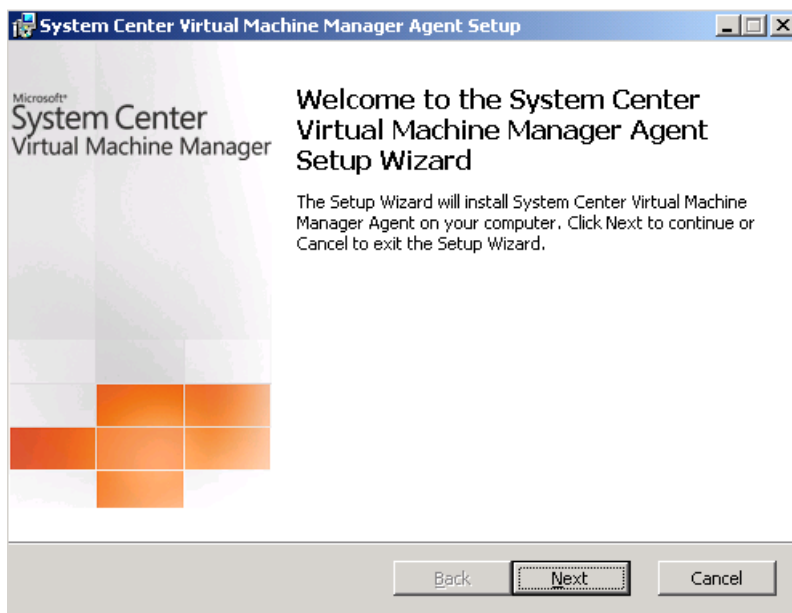
Nachinstallieren



Angabe der Hyper-V Maschine



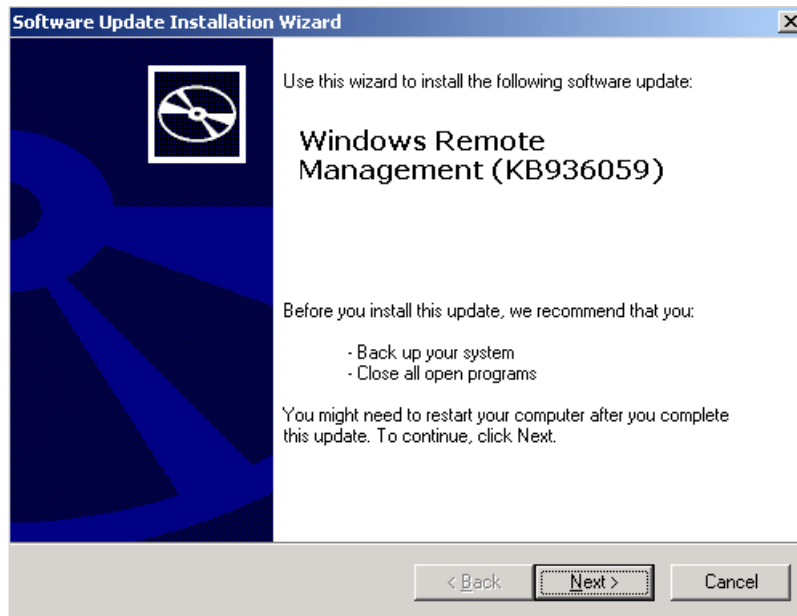
Agent Installation in den VM Gastsystemen



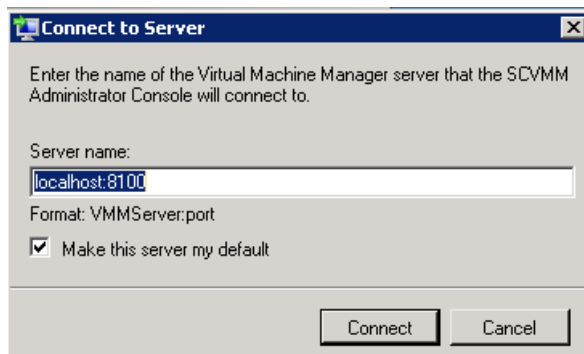
WS-Management fehlt (Windows 2003 VM)

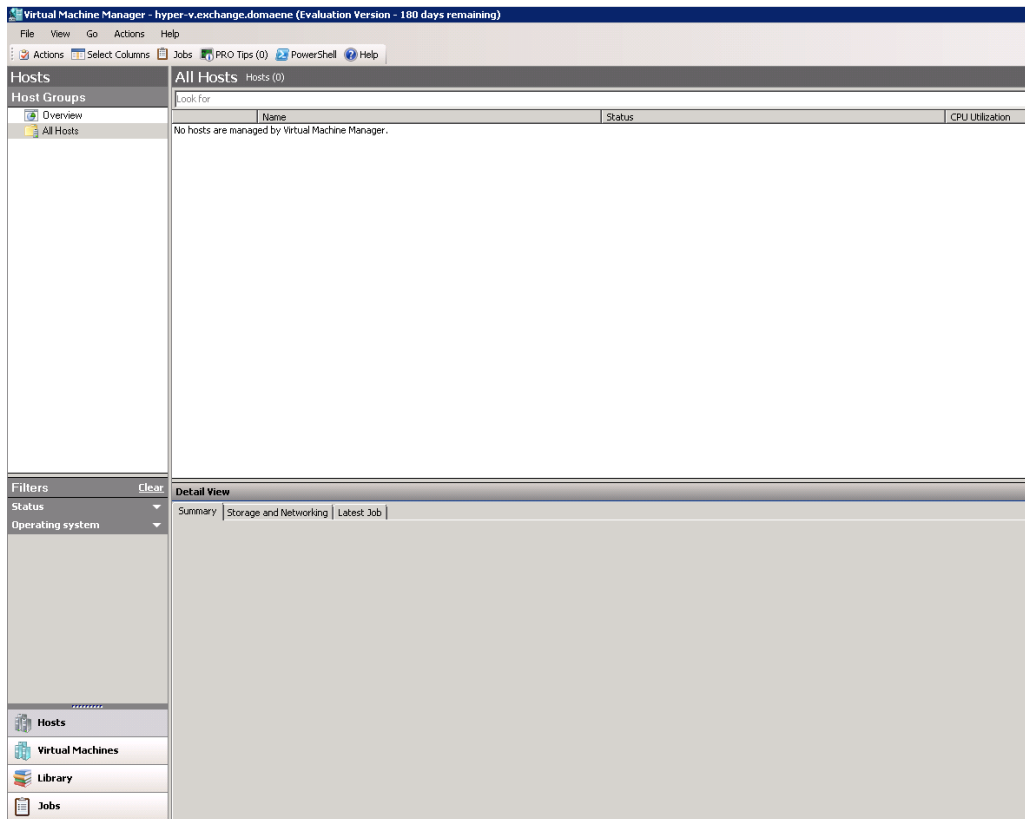


Nachinstallieren

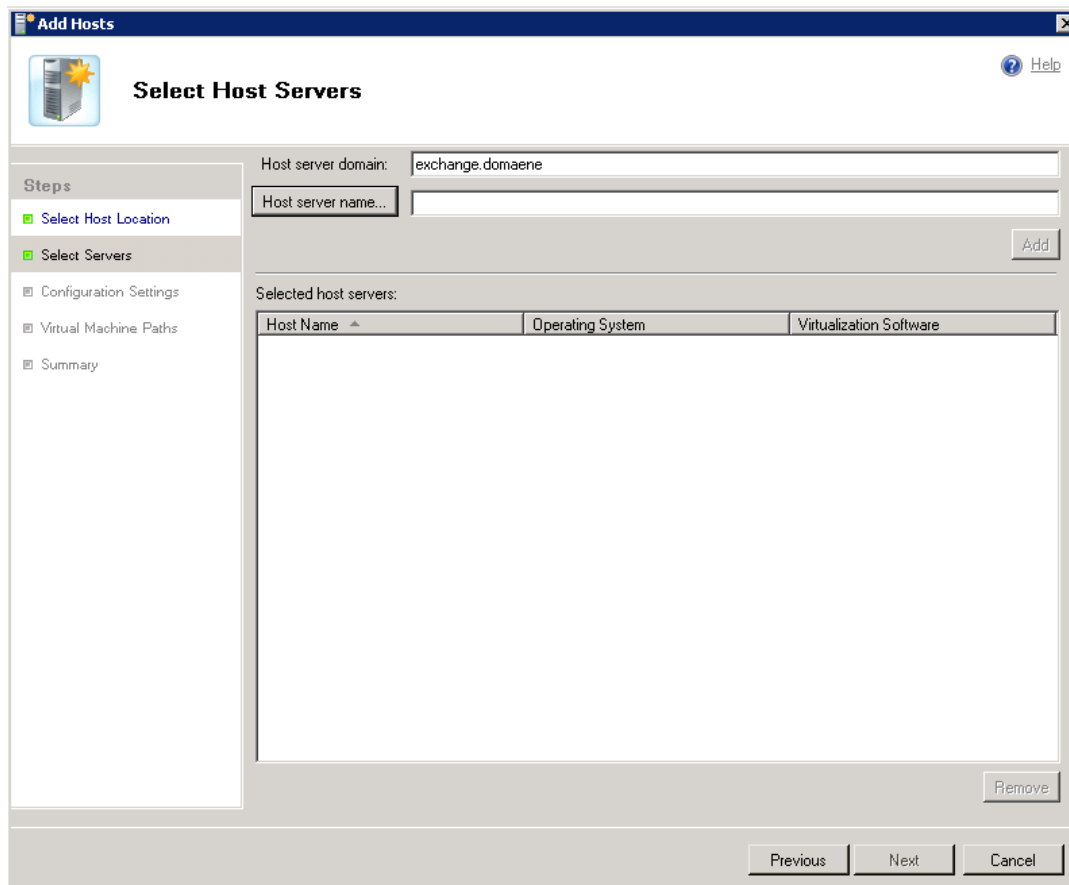


Verbinden mit dem SCVMM Server





Neuen Host-Server hinzufuegen



Host Computer Search

Search criteria

Domain:



Computer name:


Limit the results to computers which are already configured with:

Virtual Server

Hyper-V

Search results:

Name	Operating System	Virtualization software
 hyper-v.exchange.domaene	Windows Server® 2008 Enterprise	Microsoft Hyper-V
 london.exchange.domaene	Windows Server 2003	Unknown

Name	Operating System	Virtualization platform
 hyper-v.exchange.domaene	Windows Server® 2008 Enterprise	Microsoft Hyper-V

Anzeige des Host-Status

The screenshot displays the Virtual Machine Manager interface for a host named 'hyper-v.exchange.domaene'. The interface is divided into several sections:

- Hosts:** A table showing the host's status.
- Filters:** A section for filtering hosts by status and operating system.
- Detail View:** A section providing detailed information about the host's hardware and software.

Name	Status
hyper-v.exchange.domaene	OK

Filters

- Status:
- Operating system:

Detail View

Summary | Storage and Networking | Latest Job

hyper-v.exchange.domaene

Status: OK

Latest Job: 0% ([Refresh VM Properties - System Job](#))

CPU: 2.67 GHz Intel Pentium 4

Memory: 7.93 GB total, 256.00 MB reserve, 2.70 GB available

Storage: 745.22 GB capacity, 534.35 GB available

Operating system: Microsoft® Windows Server® 2008 Enterprise , Service Pack 1

Virtualization software: Microsoft Hyper-V (Status: Up-to-date)

Virtual machines

Anzeige der VM Guest Systeme

Virtual Machine Manager - hyper-v.exchange.domaene (Evaluation Version - 180 days remaining)

File View Go Actions Help

Actions Select Columns Jobs PRO Tips (0) PowerShell Help

Virtual Machines

Host Groups

- Overview
- All Hosts
- hyper-v

Filters Clear

- Status
- Owner
- Operating system
- Added date
- Tag

Virtual Machines (3)

Name	Status	Job Status	Host	Owner	CPU Utiliz
W2K8DC	Running		hyper-v	Unknown	0 %
W2K8-DC	Running		hyper-v	Unknown	0 %
W2K8-MSX	Running		hyper-v	Unknown	0 %

Detail View

Summary Storage and Networking Latest Job

Refresh virtual machine

Status: Completed
Command: Refresh-VM

Started on: 6/21/2008 11:18:13 PM
Duration: 00:00:01
Owner: NT AUTHORITY\SYSTEM
Progress: 100 % complete
Current step: Refresh virtual machine

Property	Previous Value	New Value
Virtual Machine - W2K8-DC		
Action when Virtual Server starts	(none)	Turn On If Was Running
Action when Virtual Server stops	(none)	Save
Computer name	(none)	W2k8-DC.w2k8dom.dom
Seconds to delay automatically turning on virtual ma...	(none)	0
Status	Incomplete VM Configuration	Running
Use hardware assisted virtualization	(none)	True

Hosts Virtual Machines

Job Overview

Virtual Machine Manager - hyper-v.exchange.domaene (Evaluation Version - 180 days remaining)

File View Go Actions Help

Actions Select Columns Jobs PRO Tips (0) PowerShell Help

Jobs

Jobs (47)

Look For

Name	Status	Start Time	Result Name	Owner
Update library	Completed	6/21/2008 11:19:07 PM	hyper-v.exchange.domaene	NT AUTHORITY\SY...
Refresh virtual machine	Completed	6/21/2008 11:18:13 PM	W2K8-DC	NT AUTHORITY\SY...
Refresh virtual machine	Completed	6/21/2008 11:18:06 PM	W2K8DC	NT AUTHORITY\SY...
Refresh virtual machine properties	Completed	6/21/2008 11:18:05 PM	hyper-v.exchange.domaene	NT AUTHORITY\SY...
Refresh virtual machine properties	Completed	6/21/2008 11:17:55 PM	hyper-v.exchange.domaene	NT AUTHORITY\SY...
Start virtual machine	Failed	6/21/2008 11:17:30 PM	W2K8DC	EXCHANGE\Adminis
Remove virtual machine	Completed	6/21/2008 11:17:27 PM	W2K3-SCOM	EXCHANGE\Adminis
Refresh virtual machine	Completed w/ Info	6/21/2008 11:16:22 PM	W2K8-MSX	NT AUTHORITY\SY...
Refresh host	Completed	6/21/2008 11:16:19 PM	hyper-v.exchange.domaene	NT AUTHORITY\SY...
Refresh virtual machine	Completed w/ Info	6/21/2008 11:16:16 PM	W2K8-DC	NT AUTHORITY\SY...
Remove virtual machine	Completed	6/21/2008 11:16:15 PM	W2K3-SQL	EXCHANGE\Adminis
Refresh virtual machine	Completed	6/21/2008 11:16:10 PM	W2K3-SQL	NT AUTHORITY\SY...
Refresh virtual machine	Completed w/ Info	6/21/2008 11:16:10 PM	W2K8DC	NT AUTHORITY\SY...
Refresh virtual machine properties	Completed	6/21/2008 11:15:35 PM	hyper-v.exchange.domaene	NT AUTHORITY\SY...
Refresh virtual machine properties	Completed	6/21/2008 11:14:23 PM	hyper-v.exchange.domaene	NT AUTHORITY\SY...
Update library	Completed	6/21/2008 10:57:41 PM	hyper-v.exchange.domaene	NT AUTHORITY\SY...
Refresh virtual machine properties	Failed	6/21/2008 10:55:47 PM	hyper-v.exchange.domaene	NT AUTHORITY\SY...
Refresh virtual machine properties	Completed	6/21/2008 10:48:30 PM	hyper-v.exchange.domaene	NT AUTHORITY\SY...
Refresh virtual machine properties	Completed	6/21/2008 10:48:20 PM	hyper-v.exchange.domaene	NT AUTHORITY\SY...

Refresh virtual machine

Status: Completed
Command: Refresh-VM
Result name: W2K8-DC

Started on: 6/21/2008 11:18:13 PM
Duration: 00:00:01
Owner: NT AUTHORITY\SYSTEM
Progress: 100 % complete
Current step: Refresh virtual machine

Property	Previous Value	New Value
Virtual Machine - W2K8-DC		
Action when Virtual Server starts	(none)	Turn On If Was Running
Action when Virtual Server stops	(none)	Save
Computer name	(none)	W2k8-DC.w2k8dom.dom
Seconds to delay automatically turning on virtual m...	(none)	0
Status	Incomplete VM Configuration	Running
Use hardware assisted virtualization	(none)	True

Hosts Virtual Machines

hyper-v.exchange.domaene Virtual Machines (3)

Name	Status	Job Status	Host	Owner	CPU Utiliz
W2K8DC	Running		hyper-v	Unknown	0 %
W2K8-DC	Running		hyper-v	Unknown	0 %
W2K8-MSX	Running		hyper-v	Unknown	0 %

Detail View

Summary | Storage and Networking | Latest Job

Refresh virtual machine

Status: Completed
 Command: Refresh-VM
 Started on: 6/21/2008 11:20:07 PM
 Duration: 00:00:02
 Owner: NT AUTHORITY\SYSTEM
 Progress: 100 % complete
 Current step: Refresh virtual machine

Property	Previous Value	New Value
Virtual Hard Disk - W2K8-MSX		
File size	12584696832	12595192832
Virtual Machine - W2K8-MSX		
Computer name	(none)	W2K8-MSX.w2k8dom.dom
Operating system name	(none)	6.0
Virtual machine additions properties	(none)	1.0.0
Virtual Network Adapter - EXTERNAL		
Ethernet address	00:15:5D:C8:CB:0C	00:15:5D:C8:9B:02
Name	W2K8-MSX	EXTERNAL

Remotekontrolle

Virtual Machine Manager - hyper-v.exchange.domaene (Evaluation Version - 180 days remaining)

File View Go Actions Help

Actions Select Columns Jobs PRO Tips (0) PowerShell Help

Virtual Machines hyper-v.exchange.domaene Virtual Machines (3)

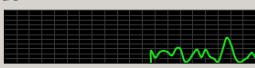
Name	Status	Job Status	Host	Owner	CPU Utiliz
W2K8DC	Running		hyper-v	Unknown	0 %
W2K8-DC	Running		hyper-v	Unknown	0 %
W2K8-MSX	Running		hyper-v	Unknown	0 %

Detail View

Summary | Storage and Networking | Latest Job

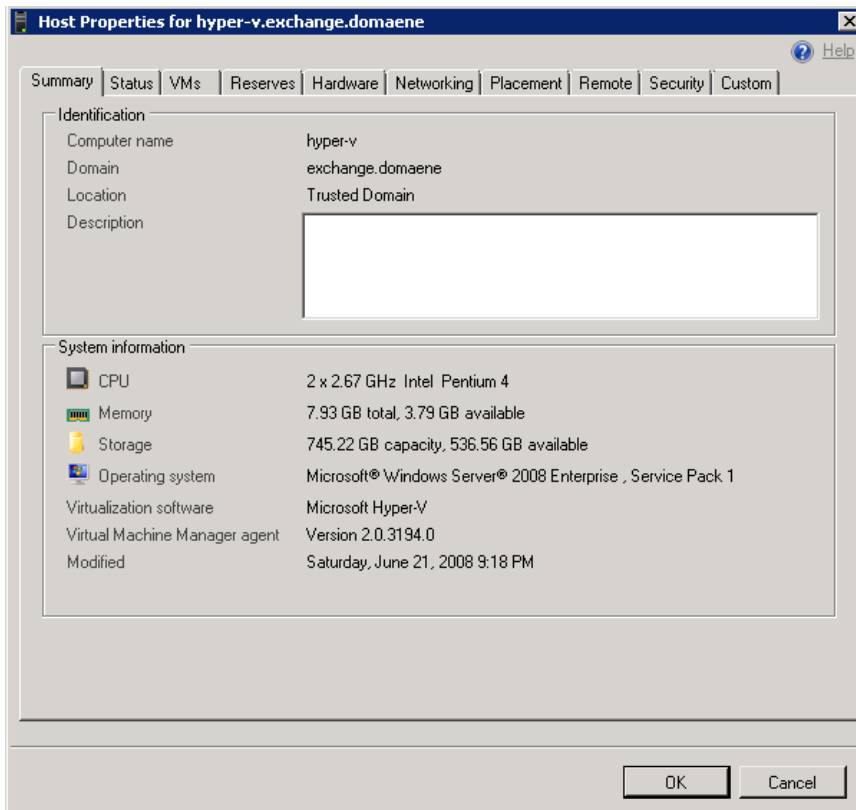
W2K8-MSX

Status: Running
 Running time: 00:02:35,9300000
 Memory: 1.00 GB
 CPU: 1-processor 1.00 GHz Pentium III Xeon
 Storage: 127.00 GB
 Latest Job: 100 % complete
 CPU: Refresh-VM

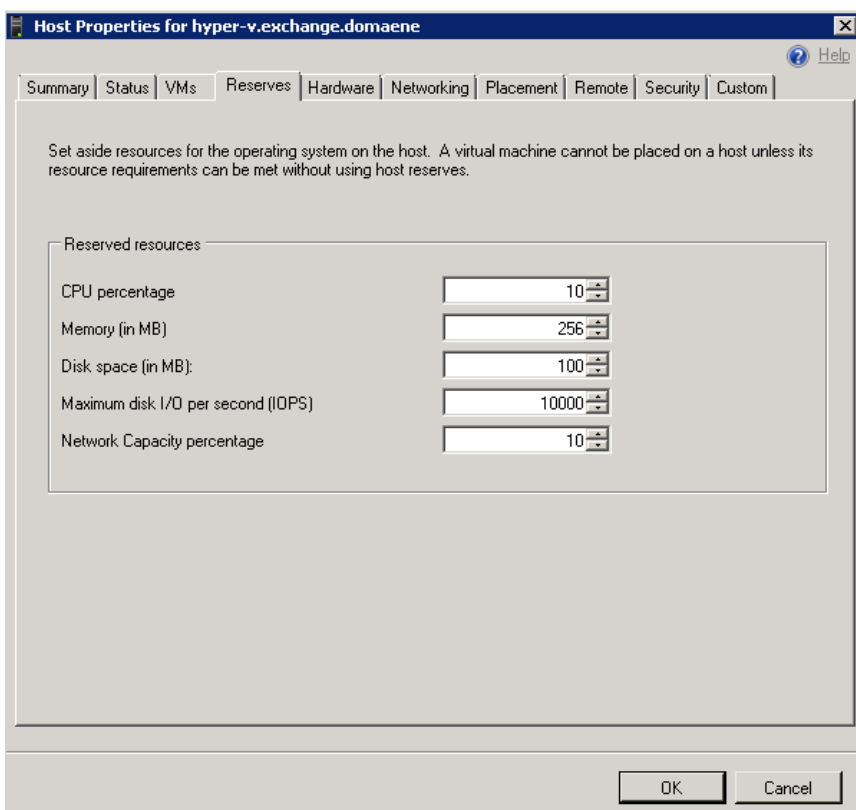


Press CTRL + ALT + DELETE to log on

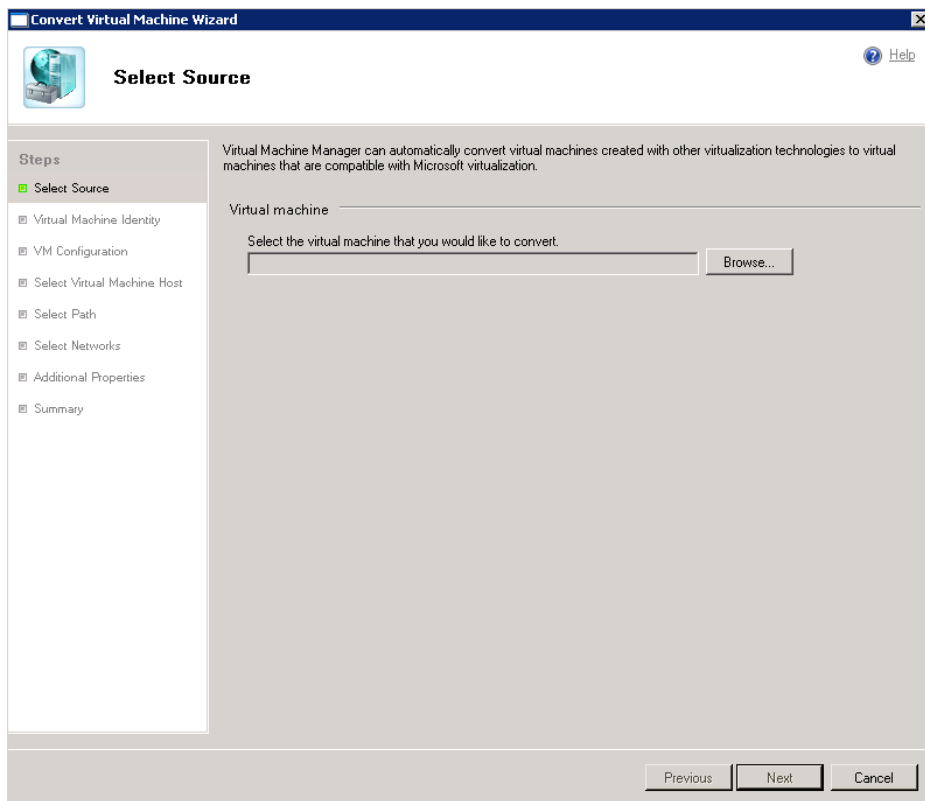
Host System Eigenschaften



Reserve Einstellungen

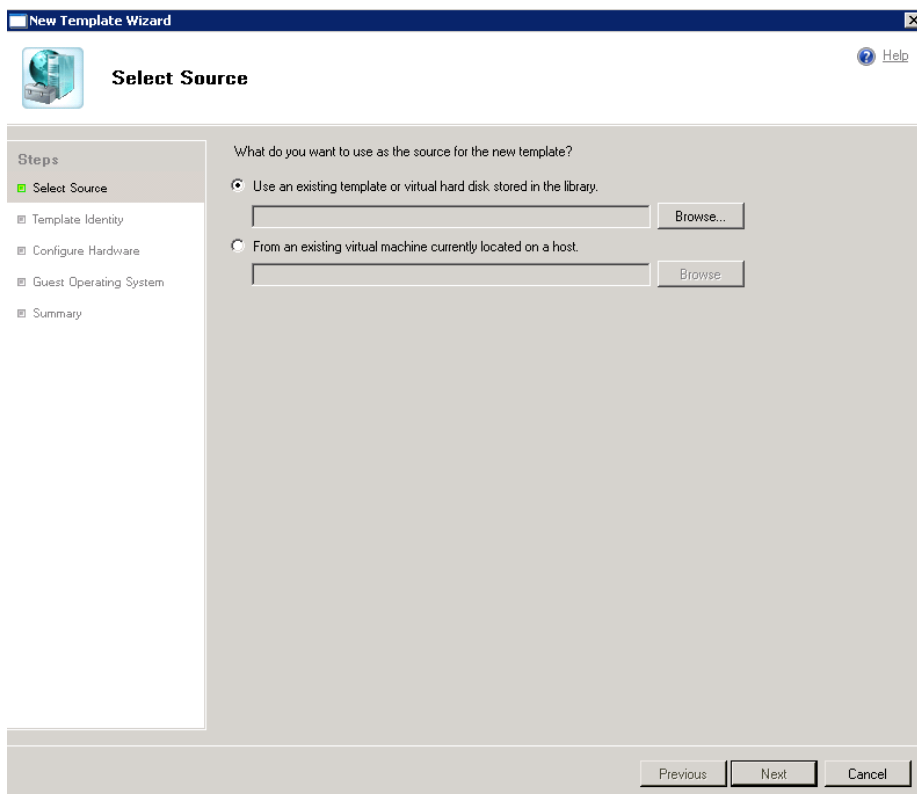


P2V

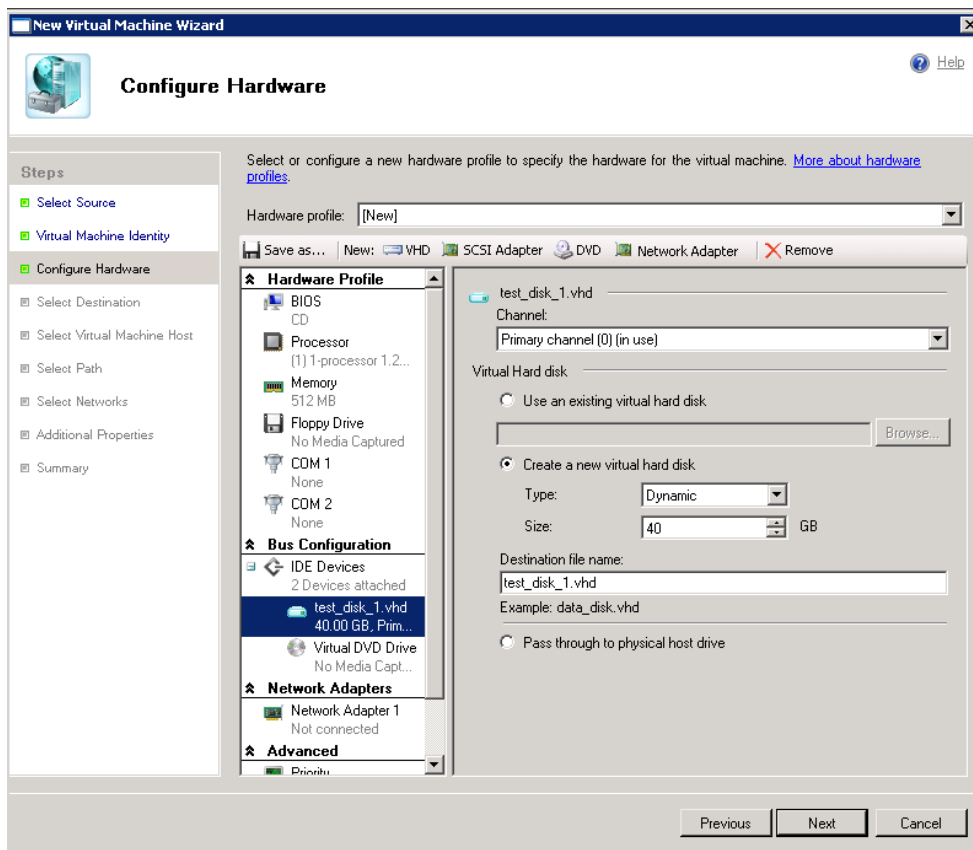


Siehe auch meinen anderen Artikel: <http://www.it-training-grote.de/download/scvmm.pdf>

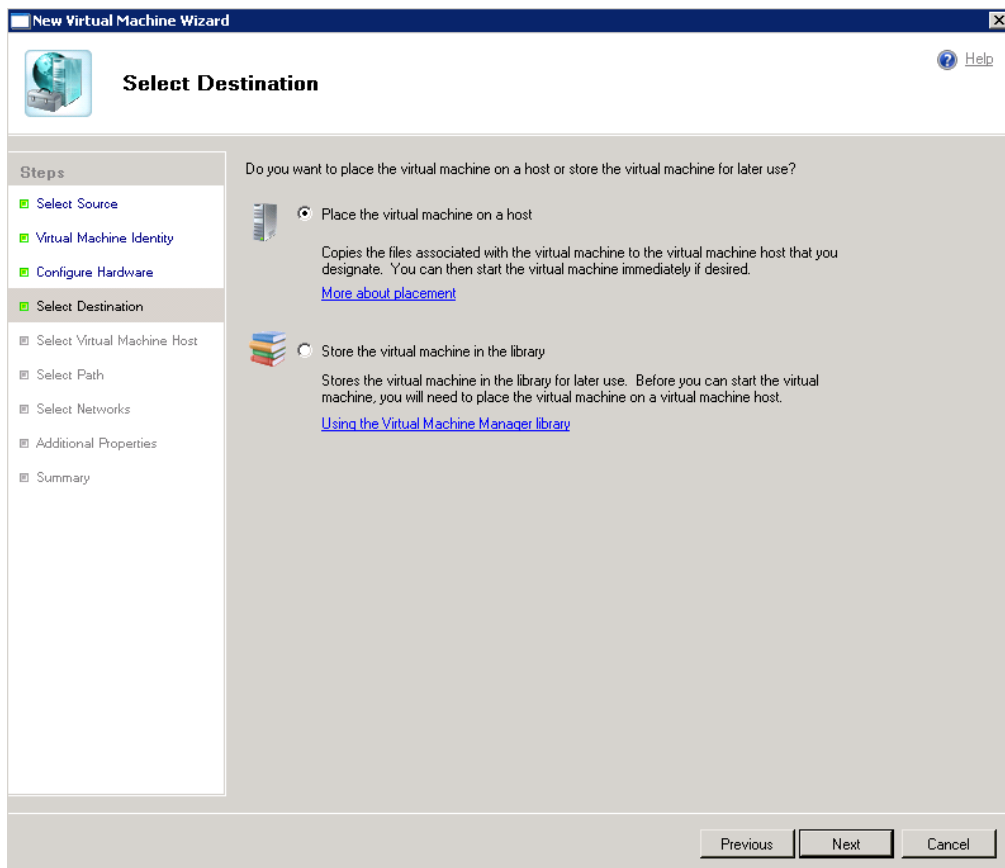
Neuer Template Wizard



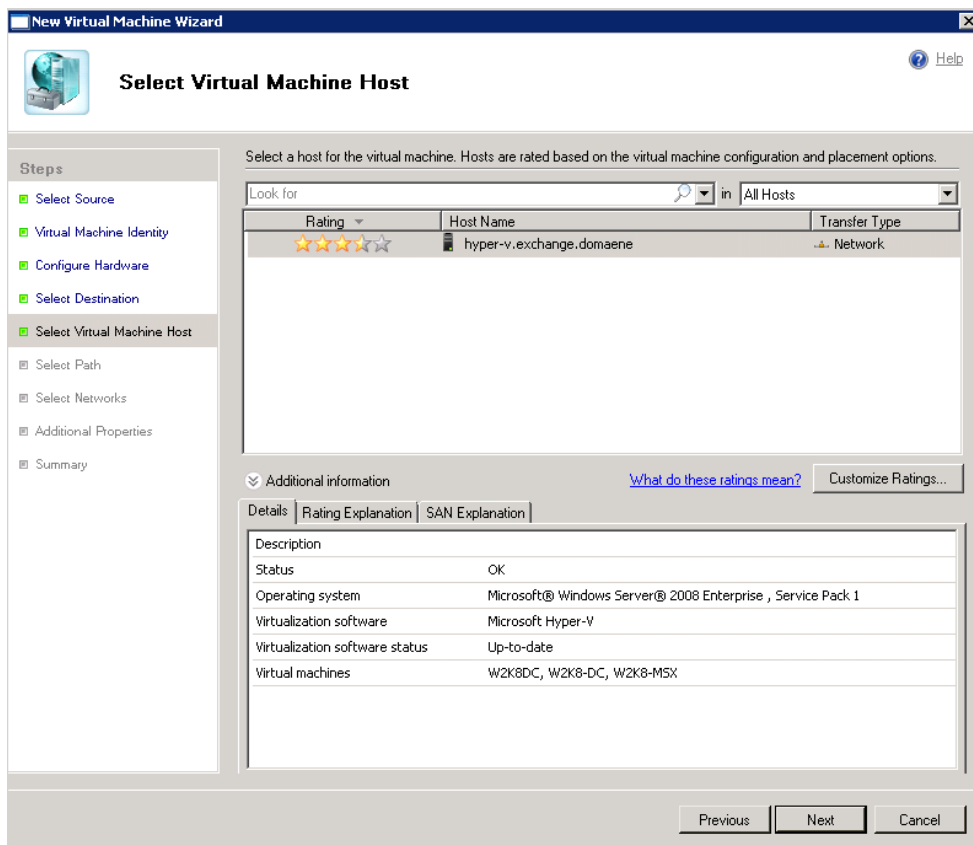
Neue virtuelle Maschine



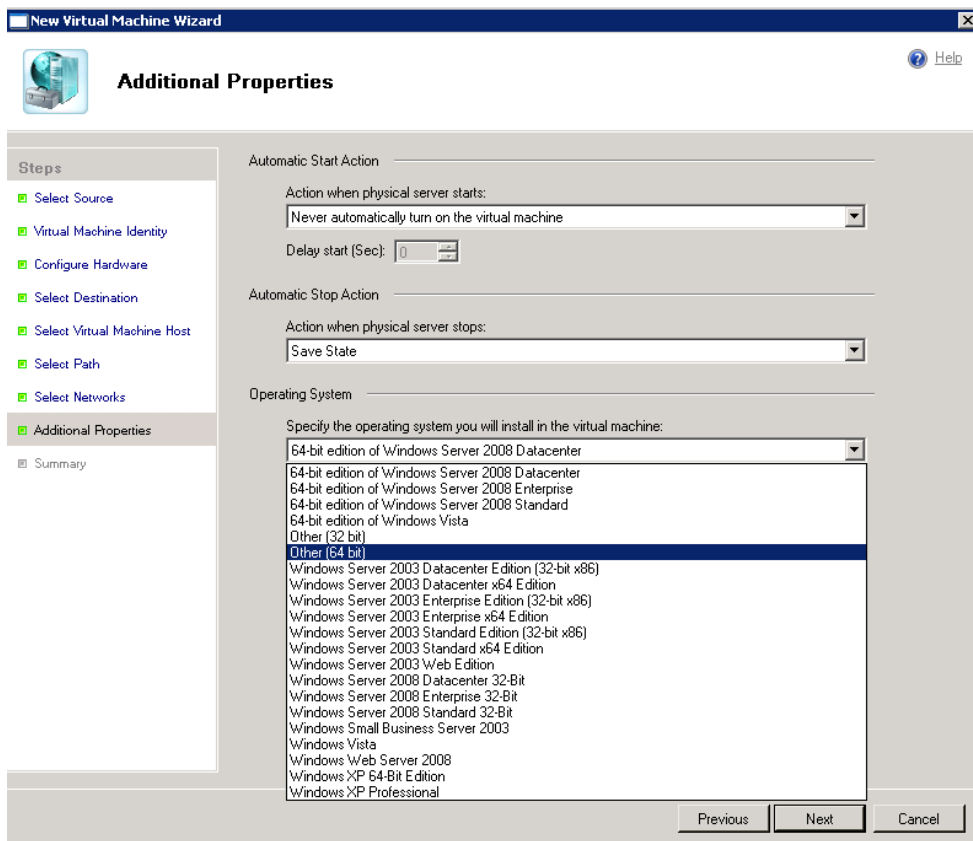
Angabe des Speicherorts



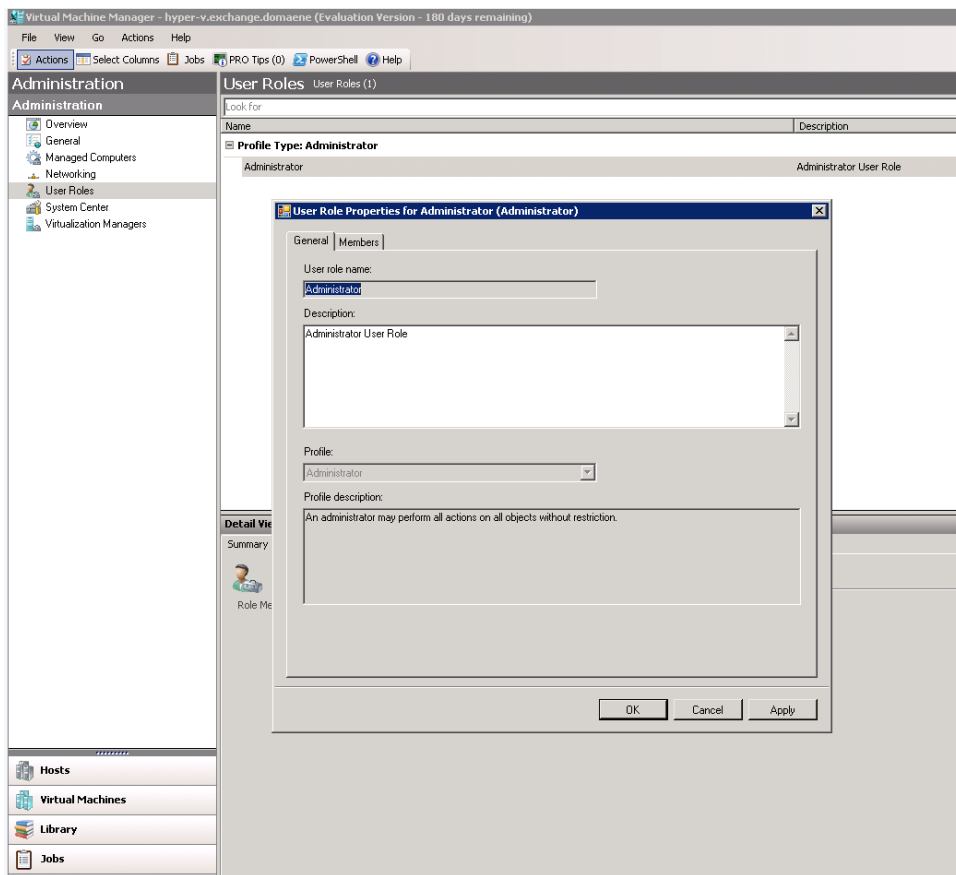
VM Placement



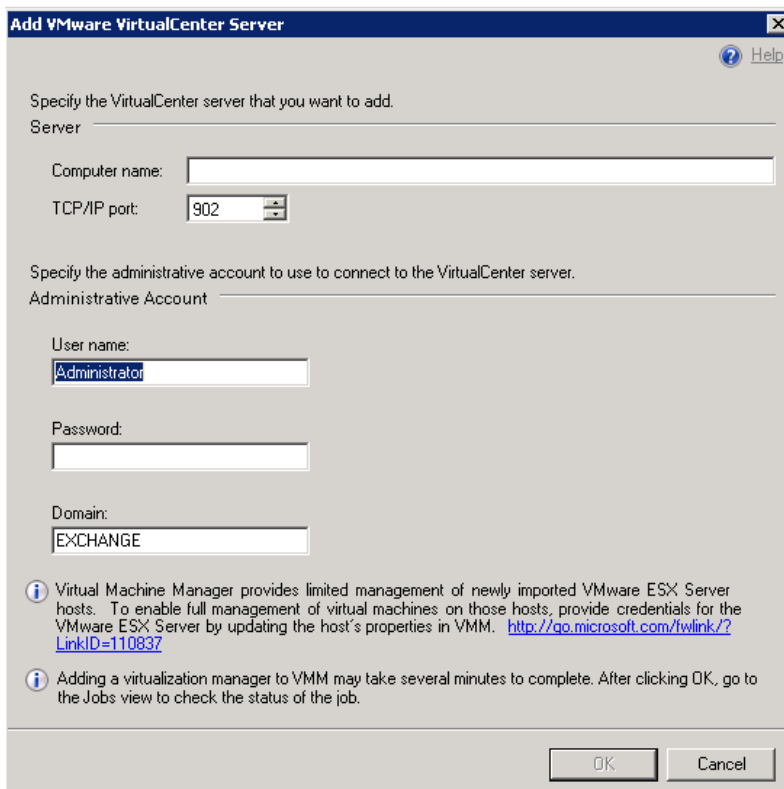
Auswahl des zu installierenden Betriebssystems



Benutzerrollen



Auch VMware Virtual Center Server koennen hinzugefuegt werden



Das war nur ein grober Ueberblick ueber dieses geniale Tool