

Owner of the content within this article is www.msexchange.org
Written by Marc Grote – www.it-training-grote.de

Exchange 2003 – Overview of the Exchange 2003 Resource Kit Tools

Written by Marc Grote - <mailto:grotem@it-training-grote.de>

Abstract

In this article I will give you an overview about the Exchange 2003 Resource Kit Utilities – called “All-in-One Exchange 2003 Tools” which you can download for free from the Microsoft Exchange website.

Let’s begin

I will not cover every tool from the Exchange 2003 tools -only my favourites and my most used programs.

The first think to do is to download the tools from the following [website](#).
The package is about 34 megabytes.

If you have any questions regarding the documentation for these tools, send your feedback to exchdocs@microsoft.com.

Here are my favourites:

Jetstress

Verify the performance and stability of your disk subsystem by simulating disk I/O load on an Exchange test server before putting your server into a production environment. I like this tool because it is possible to simulate the I/O load before you invest in disc subsystems.

Load Simulator (LoadSim)

Simulate the performance load of MAPI clients with this benchmarking tool, which enables you to test how an Exchange 2003 server responds to e-mail message loads. This tool is great for calculation the server load on Exchange Servers before you invest in Hardware. Some vendors like HP/Compaq have their own utilities to simulate load on servers.

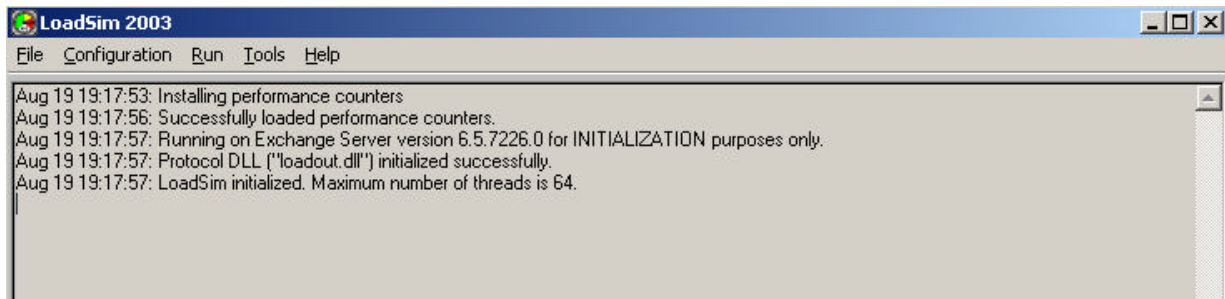


Figure 1: Loadsim2003

For more information read Amin Zinman’s article about [Loadsim](#).

Exchange 2003 Management Pack Configuration Wizard

Configure test mailboxes, message tracking, and monitoring services in the Exchange 2000 and Exchange 2003 Management Packs with this graphical user interface. Management packs are enhancements to the MOM (Microsoft Operation Manager) Server. To give MOM the control above Servers, you must install a Management Pack. MOM is a server to centrally control the health of Microsoft Servers, centrally Log- and Event management and many more.

Exchange Deployment Tools

The Exchange Deployment Tools give you much helpful information about the deployment process of Exchange 2003 in existing Exchange 5.5 organizations or how to deploy Exchange 2003 in new organizations. The Deployment Tools uses a step by step wizard to help the Administrator to successful implement an Exchange Server. The Deployment tools consists of many command line options to collect information about the existing environment

For more information read the following [article](#):



Figure 2: Exchange Server Deployment Tools

LegacyDN

LegacyDN changes an attribute of many Active Directory service objects. You can also use this tool to view or change legacyExchangeDN values. It is necessarily to change the LegacyDN in different Exchange recovery scenarios. Microsoft recommends to use the LegacyDN tool only in test environments. Read more about the LegacyDN [here](#).

Address Rewrite

EXARCFG rewrites return e-mail addresses on outgoing messages sent from a non-Microsoft mail system to Exchange and destined to external or Internet addresses. What does this mean: Assume a merger with a company. They have two Exchange organizations and you want to consolidate these organizations while you want that all e-mail addresses reflect the parent company's name.

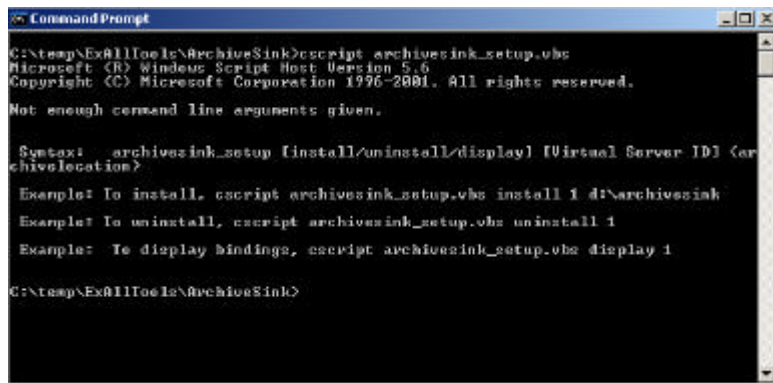
EXARCFG has the same function as the Exchange 5.5 tool ReRouteViaStore.

```
Command Prompt
C:\temp\Ex011Tools\Exarcfg>exarcfg
Function : Enable/Disable the Exchange Address Rewrite feature
Usage: exarcfg
      [Optional -l -e -d -v:2 -s:svr1]
      -l displays the current Address Rewrite settings per server/US1
      -e enable address rewrite for the server
      -d disable address rewrite for the server
      -s server FQDN
      -v [num] which US needs to be enabled for address rewrite
      -? Prints this help message
Default values:
      If -v Not Specified, defaults to Virtual Server 1
Example: exarcfg -s:server1.microsoft.com -e -v:2
Note: The domain must have LDAP service for the search.
C:\temp\Ex011Tools\Exarcfg>
```

Figure 3: EXARCFG

ArchiveSink

Archive Sink is a simple .VBS script which archive messages and log recipient details and other information about messages sent to or received by your server running Exchange. Need more sinks? – Than click [here](#) for a selection of event sinks from Sig Weber.



```
C:\temp\ExAllTools\ArchiveSink>cscript archivesink_setup.vbs
Microsoft (R) Windows Script Host Version 5.6
Copyright (C) Microsoft Corporation 1996-2001. All rights reserved.

Not enough command line arguments given.

Syntax: cscript archivesink_setup [install/uninstall/display] [Virtual Server ID] [archive location?]

Example: To install, cscript archivesink_setup.vbs install 1 d:\archivesink
Example: To uninstall, cscript archivesink_setup.vbs uninstall 1
Example: To display bindings, cscript archivesink_setup.vbs display 1

C:\temp\ExAllTools\ArchiveSink>
```

Figure 4: ArchiveSink

ASP.NET Mobile Controls Device Updates

Update the supported devices you can use with Microsoft Outlook Mobile Access on your Exchange server. You can find updates on <http://www.asp.net>. The actual Device Update version is 4.0 which come with Exchange 2003 SP1. For more information about OMA read the following article: http://www.msexchange.org/tutorials/OMA_Exchange_Server_2003.html

Authoritative Restore

AUTHREST.EXE is used to force a restored directory database to replicate to your other servers after restoring from a backup by using this tool. AUTHREST increases the USN of all restored objects in that manner that the restore becomes authoritative about all other existing servers.

Auto Accept Agent

Automatically process meeting requests for resource mailboxes. The agent checks the availability of the resource mailbox based on the resource schedule (not free/busy) and accepts or declines new or updated meeting requests.

Badmail Deletion and Archiving

This tool deletes or archives the files in the Badmail directory of the Exchange Virtual Server. Without this tool you must manually cleanup the directory because there doesn't exist an automatically function to delete this directory.

DNSResolver

Troubleshoot e-mail delivery problems due to DNS issues by simulating the SMTP service internal code path and reading diagnostic messages. This tool is very helpful to find Exchange related DNS problems.

E-Mail Journaling Advanced Configuration

The Envelope Journaling tool (exejcfg.exe) enables you to expand the standard journaling

feature of Exchange 2003 to capture more message data. It is an enhancement to the Standard archiving Feature of Exchange 2003 which you can enable on the Server properties in the Exchange System Manager.

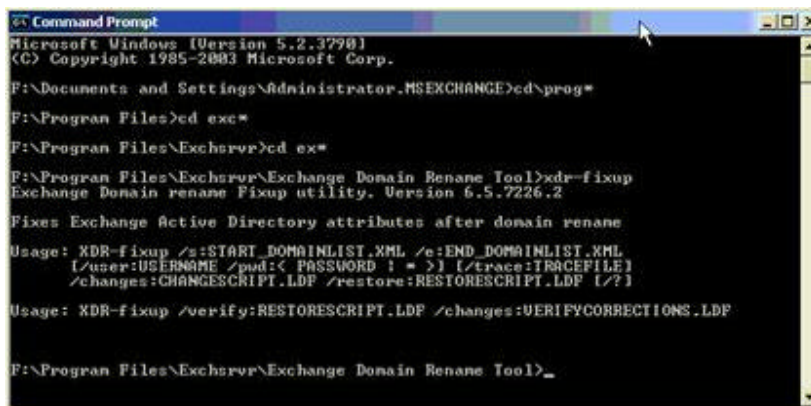
Error Code Lookup

ERR.EXE is a simple command line tool to display the different Error codes in Windows systems. All values will be looked up in the Exchange Servers internal Error code table.

Exchange Domain Rename Fixup

Repair Exchange attributes in Active Directory directory service after using the Microsoft Windows Server 2003 domain rename tool. All Exchange servers in the renamed forest must be running Exchange 2003 SP1. I doesn't recommend to rename larger productive Exchange environments with this tool because of complexity and possible problems after migration.

You can find more information [here](#):



```
Microsoft Windows [Version 5.2.3790]
(C) Copyright 1985-2003 Microsoft Corp.

F:\Documents and Settings\Administrator\MSEXCHANGE>cd\prog*
F:\Program Files>cd exc*
F:\Program Files\Exchange>cd exc*
F:\Program Files\Exchange\Exchange Domain Rename Tool>xdr-fixup
Exchange Domain rename Fixup utility, Version 6.5.7226.2

Fixes Exchange Active Directory attributes after domain rename

Usage: XDR-fixup /s:START_DOMAINLIST.XML /e:END_DOMAINLIST.XML
        /user:USERNAME /pwd:<PASSWORD ! = > | /trace:TRACEFILE]
        /changes:CHANGESCRIP.T.LDF /restore:RESTORESCRIP.T.LDF [/?]

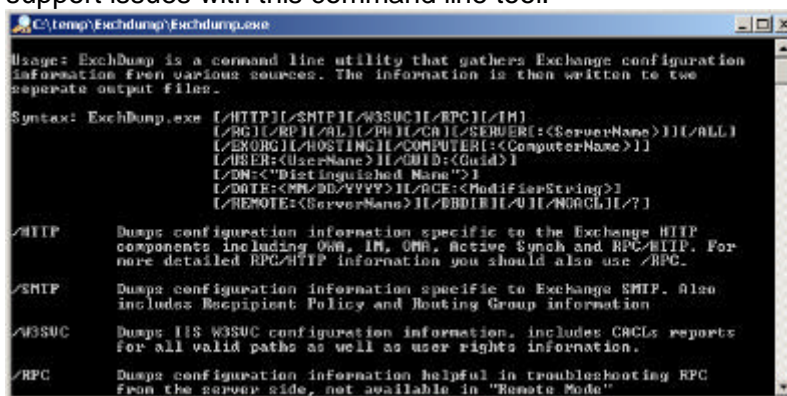
Usage: XDR-fixup /verify:RESTORESCRIP.T.LDF /changes:VERIFYPCORRECTIONS.LDF

F:\Program Files\Exchange\Exchange Domain Rename Tool>_
```

Figure 5: XDR-fixup

ExchDump

Gather Exchange configuration information from various sources used in troubleshooting support issues with this command line tool.



```
C:\temp\Exchdump\Exchdump.exe

Usage: ExchDump is a command line utility that gathers Exchange configuration
information from various sources. The information is then written to two
separate output files.

Syntax: ExchDump.exe [/HTTP|/SMTP|/W3SUC|/RPC|/IM]
                    [/AGL|/RP|/ALL|/PH|/CALL|/SERVER:<ServerName>|/ALL]
                    [/EXORG|/HOSTING|/COMPUTER:<ComputerName>|]
                    [/USER:<UserName>|/GUID:<Guid>|]
                    [/DN:<"Distinguished Name">|]
                    [/DATE:<MM/DD/YYYY>|/ACE:<ModifierString>|]
                    [/REMOTE:<ServerName>|/BDD|/U|/NGACL|/?]

/HTTP    Dumps configuration information specific to the Exchange HTTP
          components including OWA, IM, OWA, Active Sync and RPC/HTTP. For
          more detailed RPC/HTTP information you should also use /RPC.

/SMTP    Dumps configuration information specific to Exchange SMTP. Also
          includes Recipient Policy and Routing Group information

/W3SUC   Dumps IIS W3SUC configuration information. includes CAcls reports
          for all valid paths as well as user rights information.

/RPC     Dumps configuration information helpful in troubleshooting RPC
          from the server side, not available in "Remote Mode"
```

Figure 6: EXCHDUMP

Exchange Server Best Practices Analyzer Tool

The Exchange Server Best Practice Analyzer Tool scans your Exchange Organization for Exchange Servers and inspects the Servers against a „database“ with Microsoft configuration options, Tips, well known security implications and many more. A must have tool. You can read more about the tool [here](#).

GUIDGen

Use the GUID Generator to generate globally unique identifiers, or GUIDs, that you can use to identify your ActiveX classes, objects, and interfaces. As an example you can use GUIDGEN to recreate the site folder in Exchange 2003 when you have problems with Exchange 2003 and Outlook 2003 cache mode.

Microsoft Baseline Security Analyzer

Scans for missing security updates on Exchange Server 5.5 and later. Microsoft has deployed a new version 1.21 especially for Windows XP SP2. You can download the newest version [here](#).

Information Store Viewer (MDBVU32)

Browse storage, address book, and other Messaging Application Programming Interface (MAPI) providers by executing MAPI calls specified by a user. This tool is very helpful to get information about your private Exchange store but it can also be used to collect information for .PST- and .OST files.

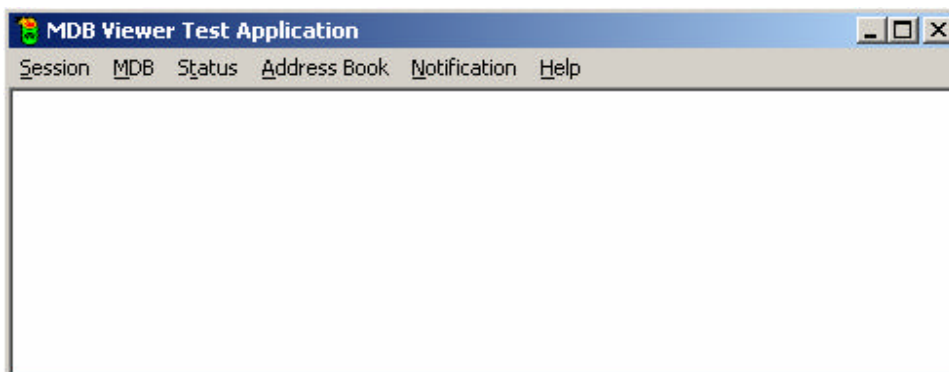


Figure 7: Information Store Viewer

MTA Check

Look for message transfer agent (MTA) database consistency and perform some repairs. The Microsoft Exchange MTA Stacks must be stopped before you run MTACHECK. With the help of MTACHECK it is possible to delete the MTA queues when there are problems associated with it.

```
Et Command Prompt
C:\temp\ExAllTools\Mtacheck>mtacheck /v
Checking queue XAPIINFOQ <id 01000020>
Checking queue OOFINFOQ <id 01000025>
Checking queue REFDATQ <id 01000026>
Checking queue MTAWORKQ <id 01000028>
Checking queue /O=NORTHWIND TRADERS/OU=FIRST ADMINISTRATIVE GROUP/CN=CONFIGURATI
ON/CN=CONNECTIONS/CN=SMTP (LONDON)/CN=(8D4F9B82-F6E5-44C5-AEEA-E86B6D5B1B32) <id
01000028>
Starting object integrity checks
Checking object 03000002 - OK, on queue 01000026
Checking object 00000003 - OK, on queue 01000020
Checking object 00000004 - OK, on queue 01000020
Checking object 00000005 - OK, on queue 01000020
Checking object 0C000006 - OK, on queue 01000020
Checking object 0C000007 - OK, on queue 01000020
Checking object 06000008 - OK, on queue 01000020
Checking object 06000009 - OK, on queue 01000020
Checking object 0600000A - OK, on queue 01000020
```

Figure 8: MTACHECK

Outlook Web Access Web Administration

Administer Microsoft Outlook Web Access with this Web-based tool. I love this tool because you can enable many hidden features with this Web-based tool.

For more information read the following [article](#).

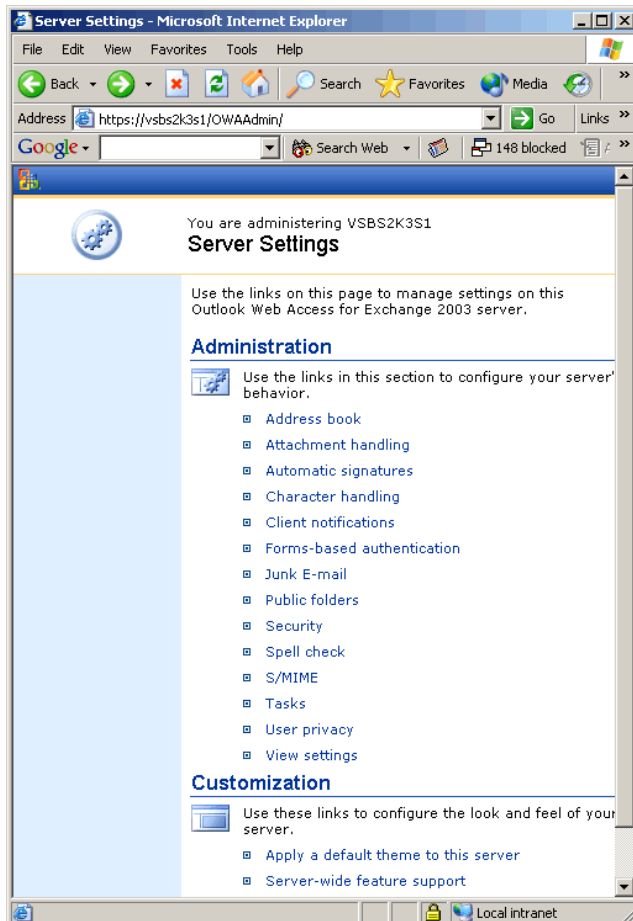


Figure 9: OWAADMIN

SMTP Internet Protocol Restriction and Accept/Deny List Configuration

Use this VB Script to programmatically set Internet Protocol (IP) restrictions on an SMTP virtual server.

Exchange Profile Update

Update Outlook profiles after moving mailboxes across Exchange organizations or administrative groups. EXPROFE is part of the Exchange Site Consolidation tools of Exchange Server 2003 SP1

For more information read the following [article](#).

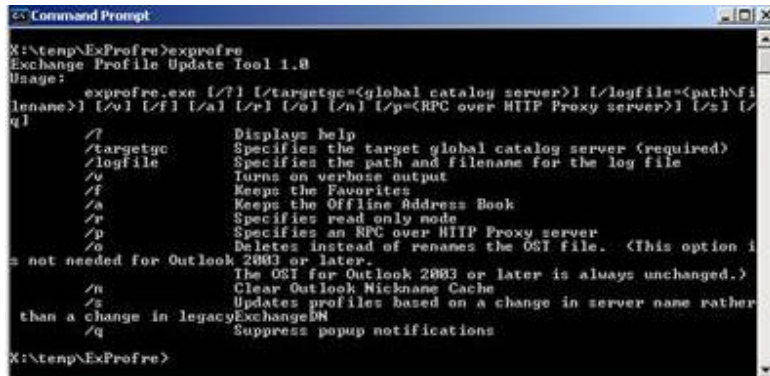


Figure 10: Outlook Profile Updater

Mailbox Merge Wizard (ExMerge)

Extract data from mailboxes on one Exchange server and then merge that data into mailboxes on another Exchange server with the help of this tool. I love this tool because it is possible to script and schedule EXMERGE. A great feature is the ability to filter Messages in .PST files before you import the data into mailboxes.

For more information see the following [article](#).



Figure 11: EXMERGE

Inter-Organization Replication

Replicate public folder and free and busy information between Exchange organizations.

For more information read the following [article](#).

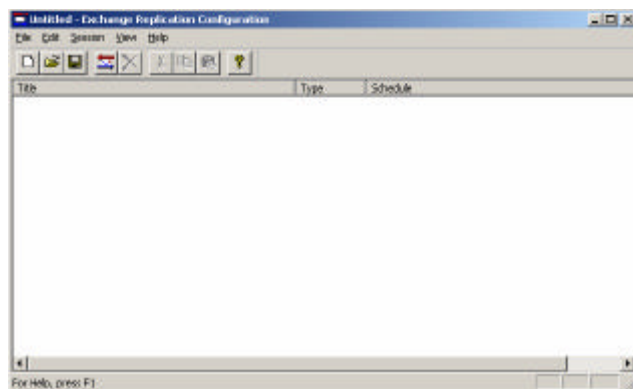


Figure 12: InterOrg Replication Tool

Add Root Certificate

Add a custom root certificate onto your Microsoft Windows Mobile–based Pocket PC. This tool is very helpful when you want to create a secure connection (SSL) to your Exchange Server (Outlook Mobile Access) and you want to import a custom root certificate.

Exchange Intelligent Message Filter

IMF is Microsofts answer against SPAM, sometimes called UCE.
For more information read the following [article](#).

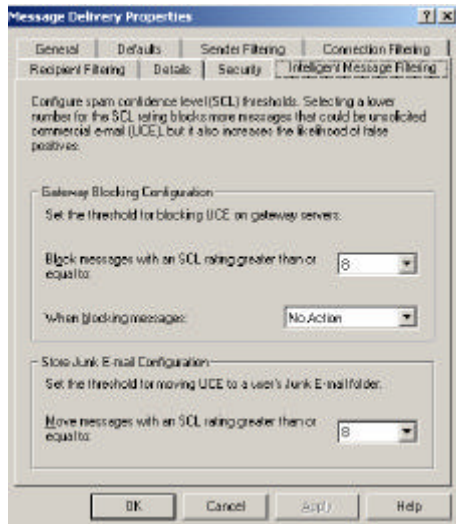


Figure 13: Intelligent Message Filter

Conclusion

I love the Exchange 2003 All in one Tools. With the help of these tools it makes the live of an Exchange Administrator a little bit easier. I recommend regularly looking for updates on the Microsoft Exchange website.

Related Links

All-in-One Exchange 2003 Tools

<http://www.microsoft.com/downloads/details.aspx?FamilyId=E0F616C6-8FA4-4768-A3ED-CC09AEF7B60A&displaylang=en>