

## **Configuring Outlook 2007 with Exchange Server 2007.**

Written by Marc Grote - <mailto:grotem@it-training-grote.de>

### **Abstract**

In this article I will show you how to configure Outlook 2007 with Exchange Server 2007. I will show you how the new Exchange 2007 Autodiscovery service works with Outlook 2007 and I will show you some new features of Outlook 2007 like different out of office (OOF) settings for internal and external use and some new enhancements in calendar scheduling.

### **Let's begin**

This article will cover three different areas of configuring Outlook 2007 with Exchange Server 2007:

- Exchange 2007 / Outlook 2007 Autodiscovery
- Out of Office configuration (OOF) for Outlook clients
- Outlook 2007 scheduling assistant

### **Exchange 2007 / Outlook 2007 Autodiscovery**

The Autodiscovery service in Exchange Server 2007 uses the users e-mail address or a domain user account to automatically configure a users Outlook 2007 profile. The Autodiscovery service provides the following information to the Outlook client:

- The Display name of the user
- Separate connection settings for internal and external connectivity
- The location of the users Exchange Server 2007 with the Mailbox server role installed
- The Uniform Resource Locator (URL) for several Outlook 2007 features (Outlook availability services) such as Outlook Free/busy or Offline address book (OAB) information
- Configuration for Outlook Anywhere

### **The Autodiscovery process**

The following picture shows the Autodiscovery process of Outlook 2007 / Exchange Server 2007.

The Outlook 2007 client looks for a SCP (Service connection point) object in Active Directory. You will see the SCP object when you use tools like ADSIedit. You can find the SCP at the following location:  
CN=<CAS\_server>,CN=AutoDiscover,CN=Protocols,CN=<CAS\_Server>,CN=Servers,CN=Exchange Administrative Group,

CN=AdministrativeGroup,CN=<Organization>,CN=Services,[Configuration Naming Context].

The SCP points to an Exchange Server 2007 with the Client Access Server role. The Client Access Server returns the URL for the Autodiscover file (Autodiscover.xml).

The Outlook client establishes a connection via HTTPS to the Client Access Server.

**Please note:**

It is possible to disable the HTTPS authentication process for Autodiscover if you want. To disable HTTPS for Autodiscovery modify the following registry key:

HKEY\_Current\_User\Software\Microsoft\Office\12.0\Outlook\AutoConfiguration – REG\_DWORD - UseSSL – change the value to 0.

The Client Access Server returns addresses of availability service from Exchange Server 2007 like Free+Busy and OAB.

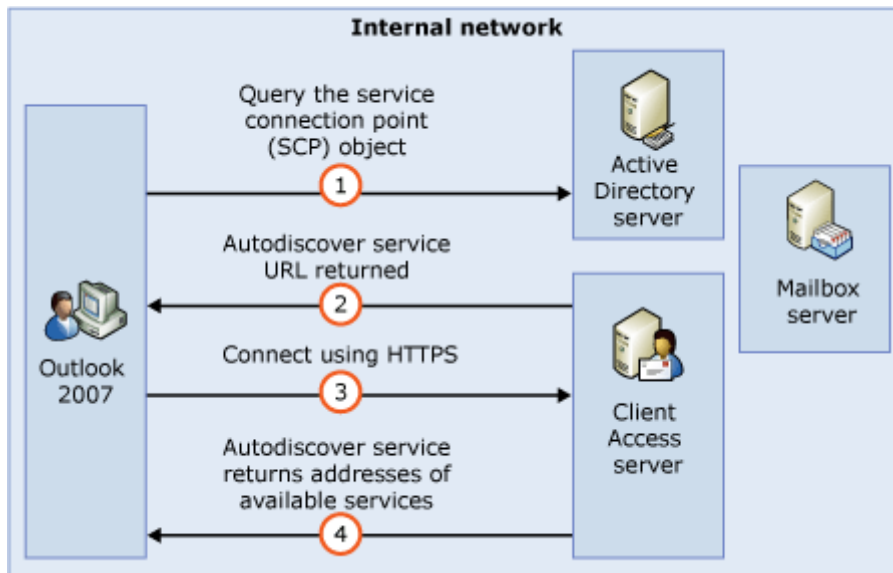


Figure 1: Autodiscovery process

**Collecting information about the Autodiscovery function**

The Autodiscovery feature is installed on a Exchange Server 2007 with the Client Access Server role installed. You will get more information about the Autodiscovery service if you execute the Exchange Management Shell CMDLet in the following picture.

```
Machine: ex2007-all | Scope: external.dom
[PS] C:\Documents and Settings\Administrator>get-autodiscovervirtualdirectory if
1
Name : Autodiscover (Default Web Site)
InternalAuthenticationMethods : <Basic, Ntlm>
ExternalAuthenticationMethods : <Basic, Ntlm>
BasicAuthentication : True
DigestAuthentication : False
WindowsAuthentication : True
MetabasePath : IIS://ex2007-all.external.dom/W3SVC/1/ROOT/Auto
discover
Path : C:\Program Files\Microsoft\Exchange Server\Clie
ntAccess\Autodiscover
Server : EX2007-ALL
InternalUrl :
ExternalUrl :
AdminDisplayName :
ExchangeVersion : 0.1 (8.0.535.0)
DistinguishedName : CN=Autodiscover (Default Web Site),CN=HTTP,CN=P
rotocols,CN=EX2007-ALL,CN=Servers,CN=Exchange A
dministrative Group (FYDIBOHF23SPDLT),CN=Admini
strative Groups,CN=ExternalExchangeOrg,CN=Micro
soft Exchange,CN=Services,CN=Configuration,DC=e
xternal,DC=dom
Identity : EX2007-ALL\Autodiscover (Default Web Site)
Guid : b4b848f0-f30f-4df8-9661-1f4553d26b5c
ObjectCategory : external.dom/Configuration/Schema/ms-Exch-Auto-
Discover-Virtual-Directory
ObjectClass : <top, msExchVirtualDirectory, msExchAutoDiscove
rVirtualDirectory>
WhenChanged : 24.01.2007 19:09:14
WhenCreated : 24.01.2007 19:09:14
OriginatingServer : ex2007-all.external.dom
IsValid : True

[PS] C:\Documents and Settings\Administrator>_
```

Figure 2: Get more information about the Autodiscovery process

## Autodiscovery URL

The Client Access Server role of Exchange Server 2007 uses the following URLs for the autodiscover process:

<https://autodiscover.domain.tld/autodiscover.xml>  
<https://autodiscover.domain.tld/autodiscover/autodiscover.xml>

## Configuring Outlook 2007 for automatically profile creation

If a user tries to start Outlook the first time a new Outlook profile generation request starts and the user is required to enter some information for Outlook profile creation. The user has the option to manually create an Outlook profile or to use the Autodiscovery service from Exchange Server 2007.

The first question is if you would like to configure Outlook to connect to Internet E-mail, Microsoft Exchange or other E-mail server.

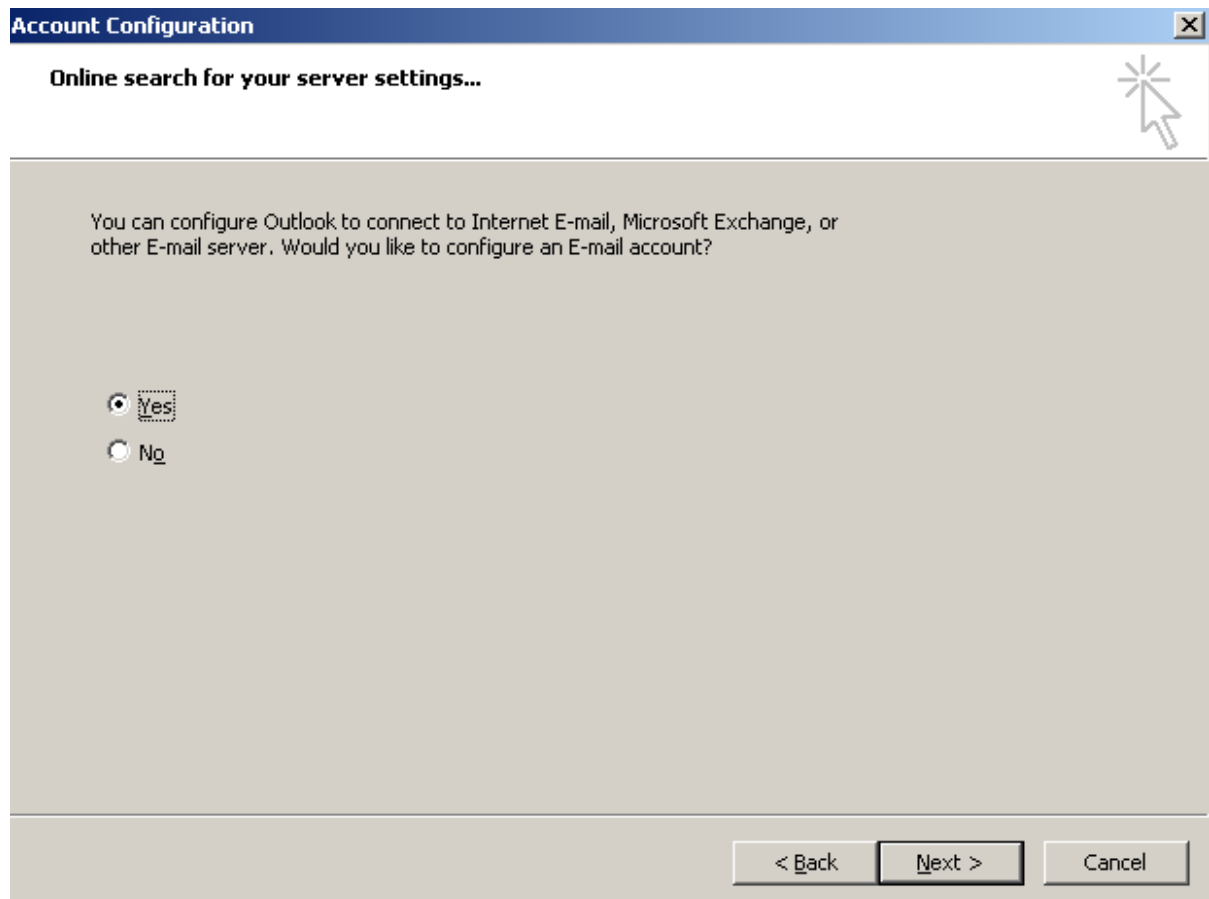


Figure 3: Configure Outlook with a mail-profile

If you want to configure Outlook 2007 for Autodiscovery in Exchange Server 2007 a user must enter the e-mail address, if this e-mail address is not automatically detected by Outlook 2007.

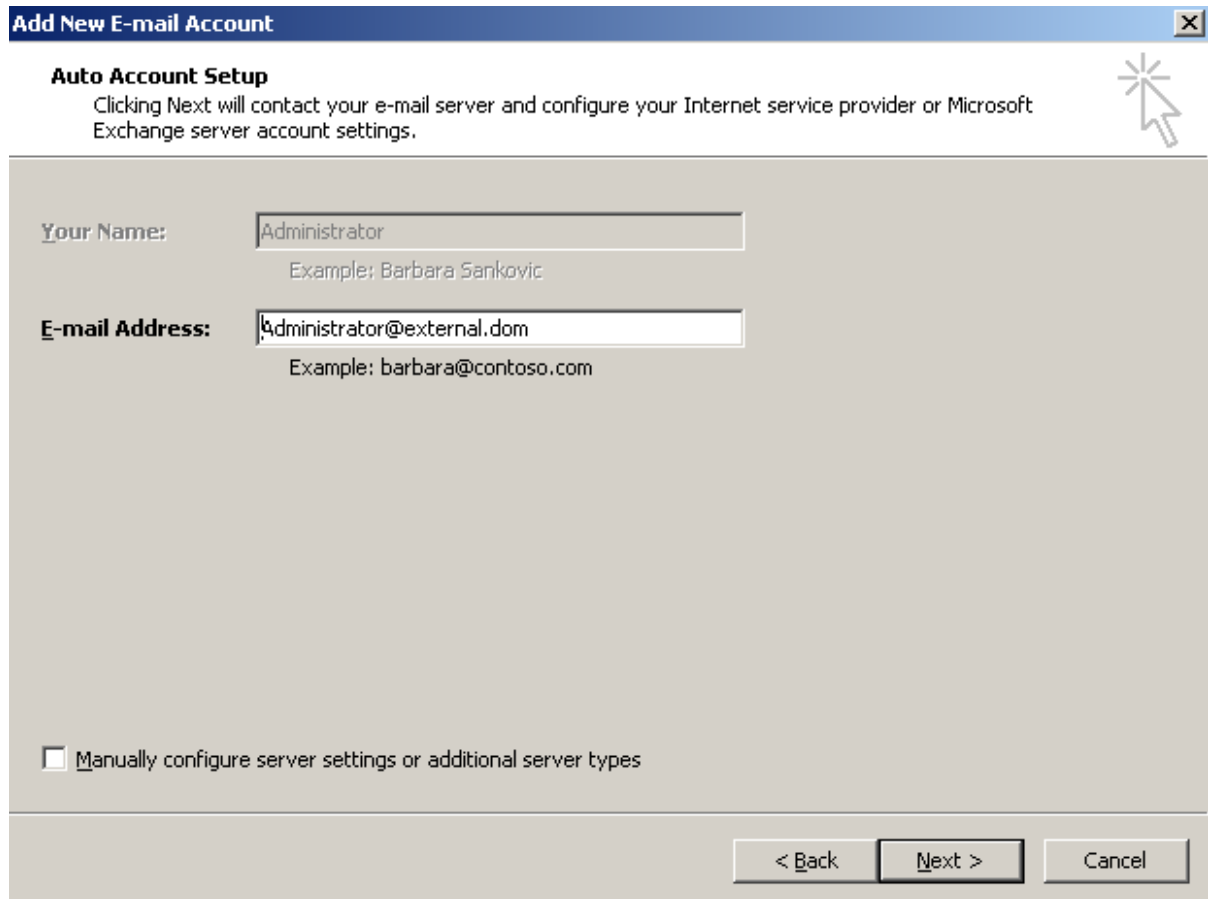


Figure 4: Detecting Autodiscover settings

If you would like to manually configure server settings or other server type activate the option for manually configuration.

Outlook now tries to automatically find the Autodiscover settings from the server with the Client Access Server role installed. After some processing, the Autodiscover feature has configured a new e-mail profile for an Outlook user.

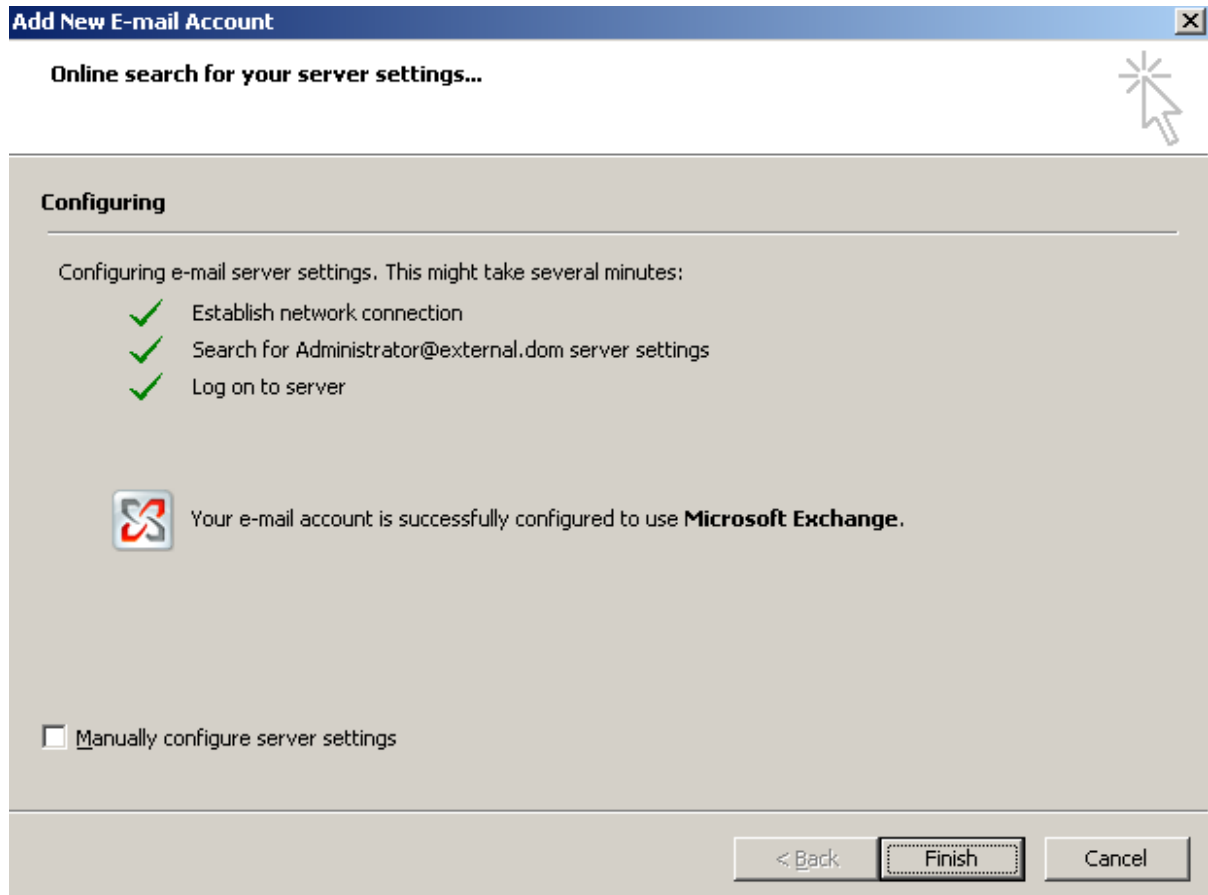


Figure 5: Autodiscover process

### Autoconfiguration test

You can test the configuration of the Autodiscovery service if you right click the Outlook button while you hold the CTRL key. Now you can select the test e-mail autoconfiguration button to test the Autodiscovery function as you can see in the following picture.

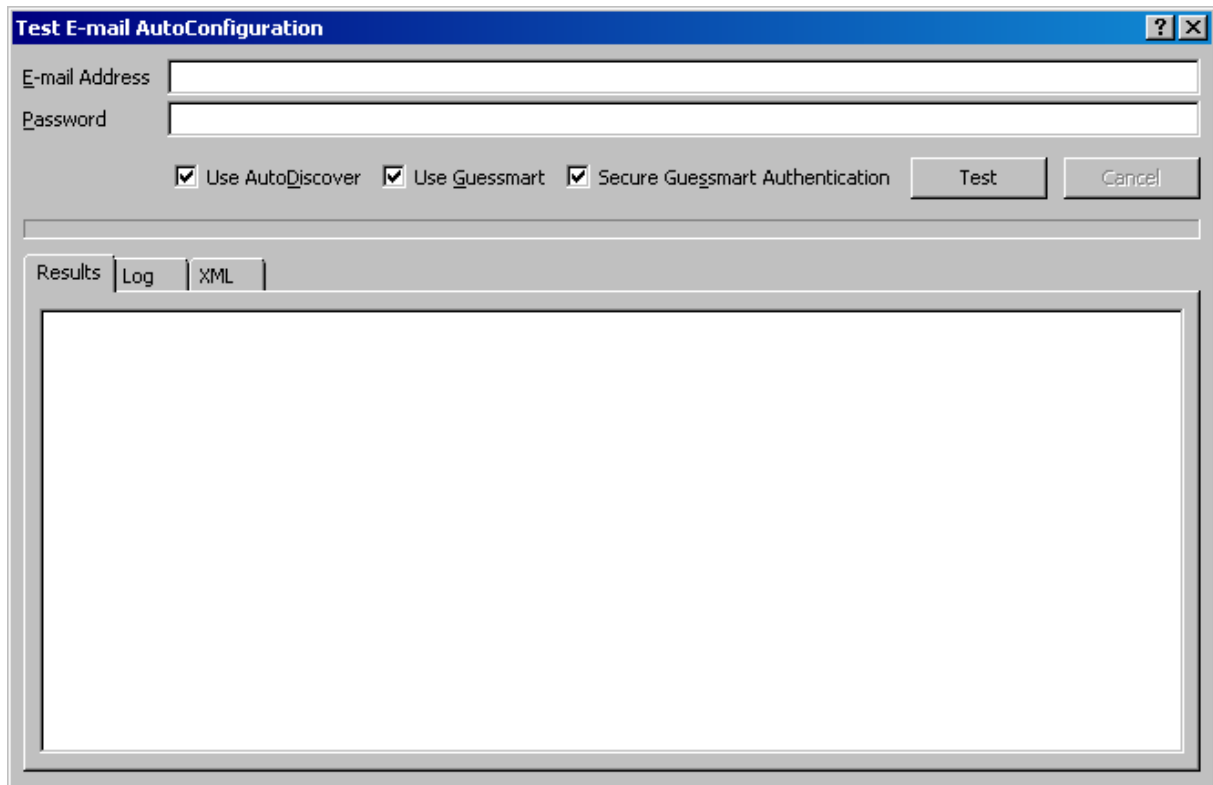


Figure 6: Test E-Mail Autoconfiguration

## Guessmart

Guessmart is relative new technology which tries to find POP/SMTP and IMAP Servers automatically by trying to establish a connection to servers in the form of IMAP.SERVER.DOMAIN.TLD, POP.SERVER.DOMAIN.TLD SMTP.SERVER.DOMAIN.TLD and so on.

As you have seen in the previous section of this article, Exchange Server 2007 Autodiscovery is a straight ford process in simple environments. If you are planning to use the Autodiscover feature with Network Load Balancing or for external clients, additional work is required to get this working.

## Out of Office configuration

Outlook 2007 has several enhancements regarding Out of Office configuration. New in Outlook 2007 is the possibility to configure different out of office notifications for internal and external use as you can see in the following picture. It is also possible to define a start and an end date of out of office so you will never forget disabling OOF when you are in office.

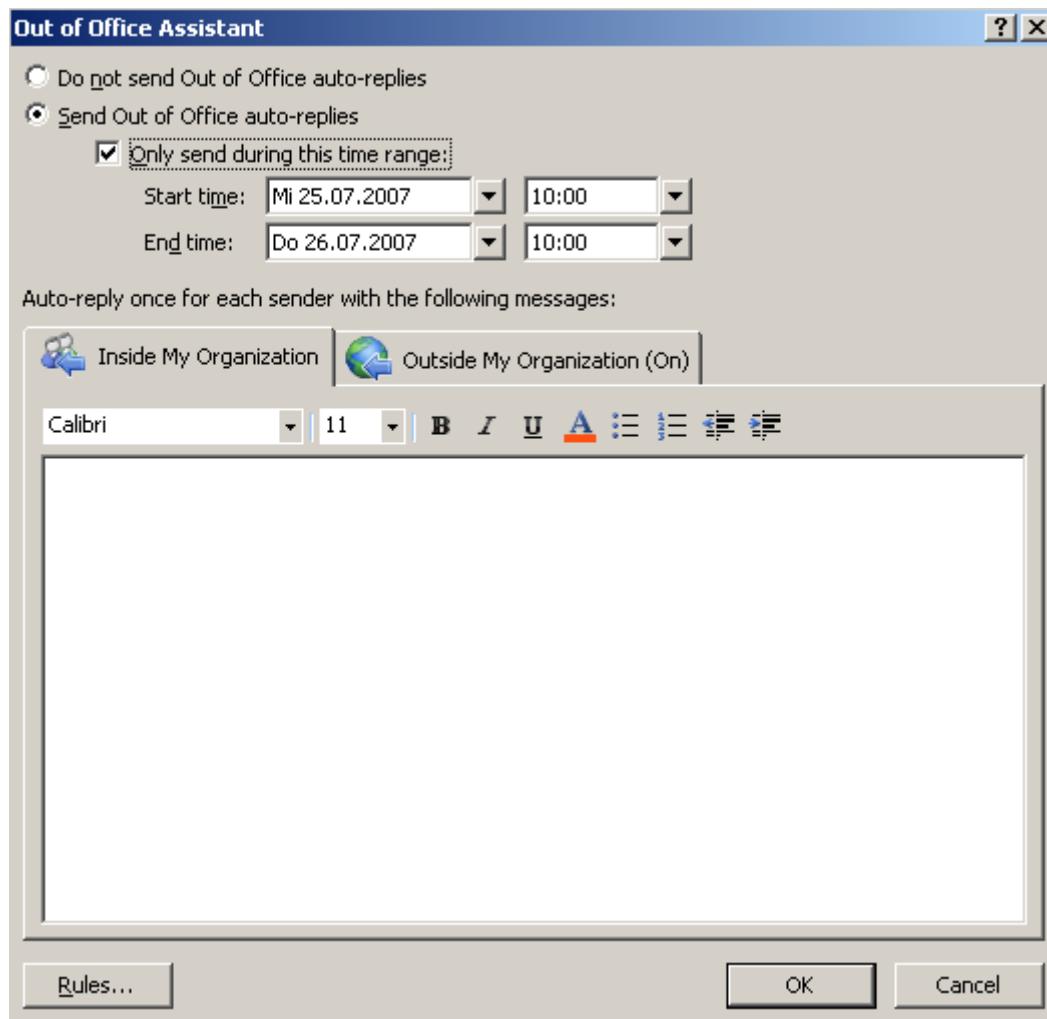


Figure 7: Out of Office configuration

## Out of Office configuration in Exchange Server 2007

In Exchange Server 2007 it is possible to configure the behaviour of out of office notifications.

It is possible to define out of office notifications for external use only or you can define if out of office notifications from Outlook 2003 clients and Exchange Server 2003 could leave the Exchange 2007 organization.



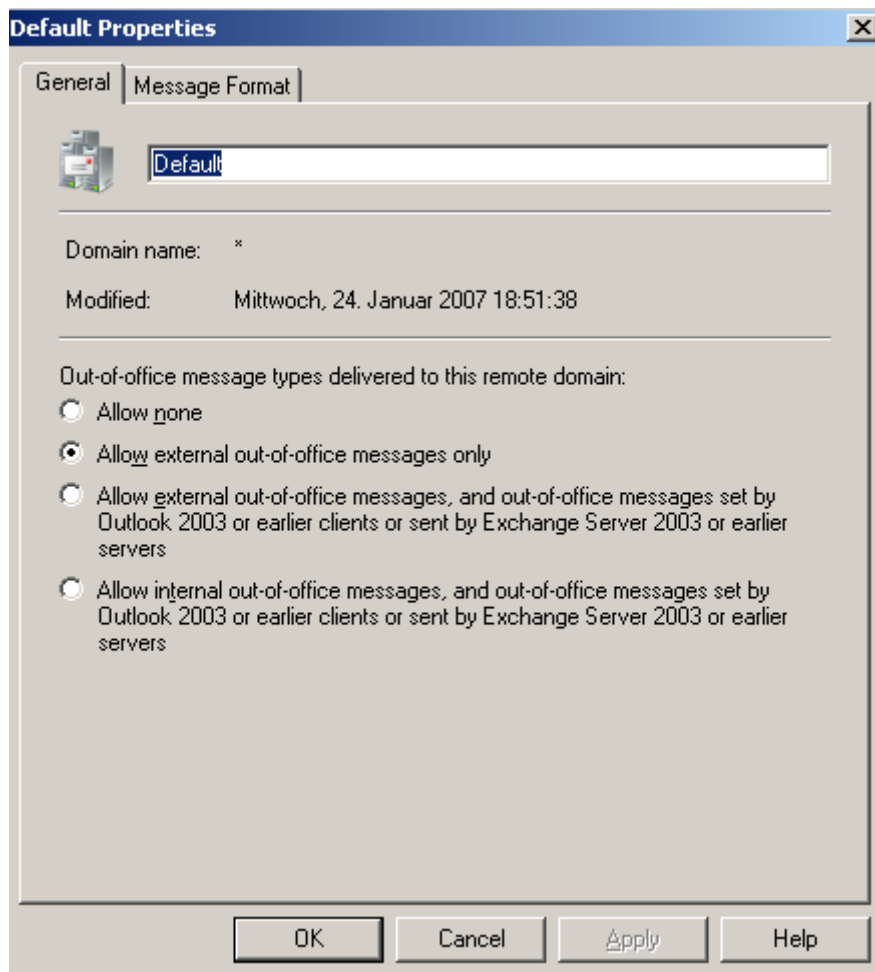


Figure 8: Out of Office settings in the Exchange Management Console (EMC)

## Change in scheduling with Outlook 2007

Outlook 2007 has a completely new rewritten scheduling engine. Meeting requests and scheduling queries are very easier and provide more powerful information. A new scheduling agent makes it easier to get a new experience when planning meetings with your colleagues.

The new scheduling assistant can automatically find the best meeting time for all attendees.

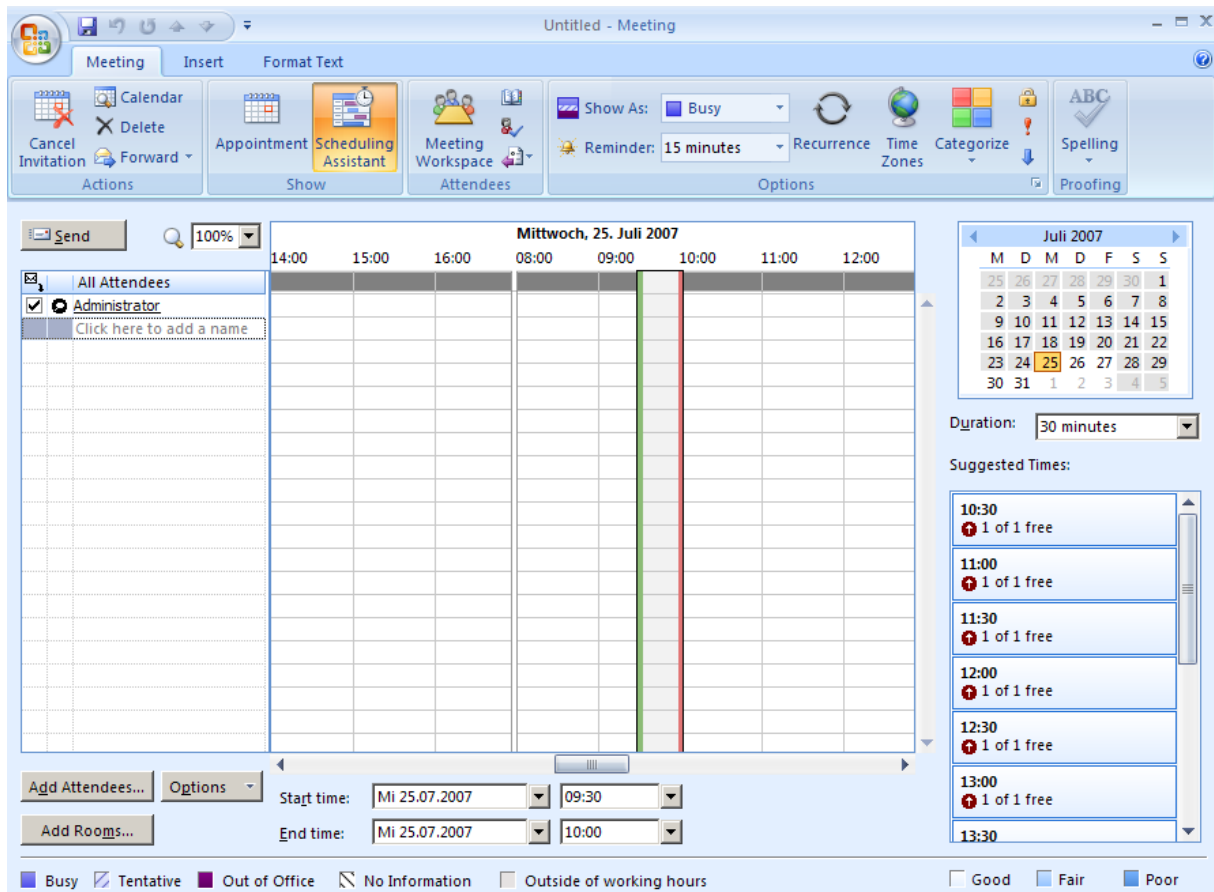


Figure 9: Scheduling meetings

The previous part of this article has shown you how to use some of the several enhancements in Outlook 2007. It is not possible to cover all new features of Outlook 2007 but I tried to cover the most significant changes in Outlook 2007 while working with Exchange Server 2007.

## Conclusion

In this article I showed you how to configure Outlook 2007 with Exchange Server 2007. I also explained some new features of Outlook 2007. This article was not designed to give you an overview about all new features in Outlook 2007. The new Autodiscovery service in Exchange Server 2007 is one of the most wanted new features in Exchange Server 2007 with Outlook 2007 and it makes the work for us administrators a lot easier.

## Related Links

How the Autodiscovery service works

<http://support.microsoft.com/kb/935439/de>

Client features in Exchange Server 2007

<http://technet.microsoft.com/en-us/library/aa998820.aspx>