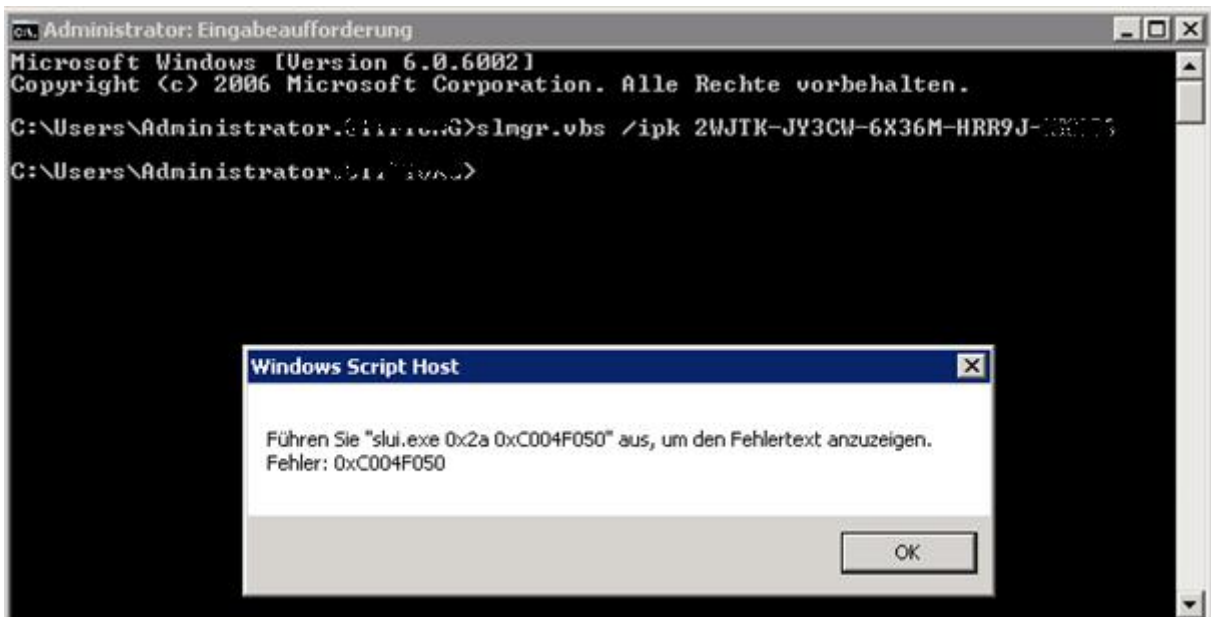


KMS Windows Server 2008

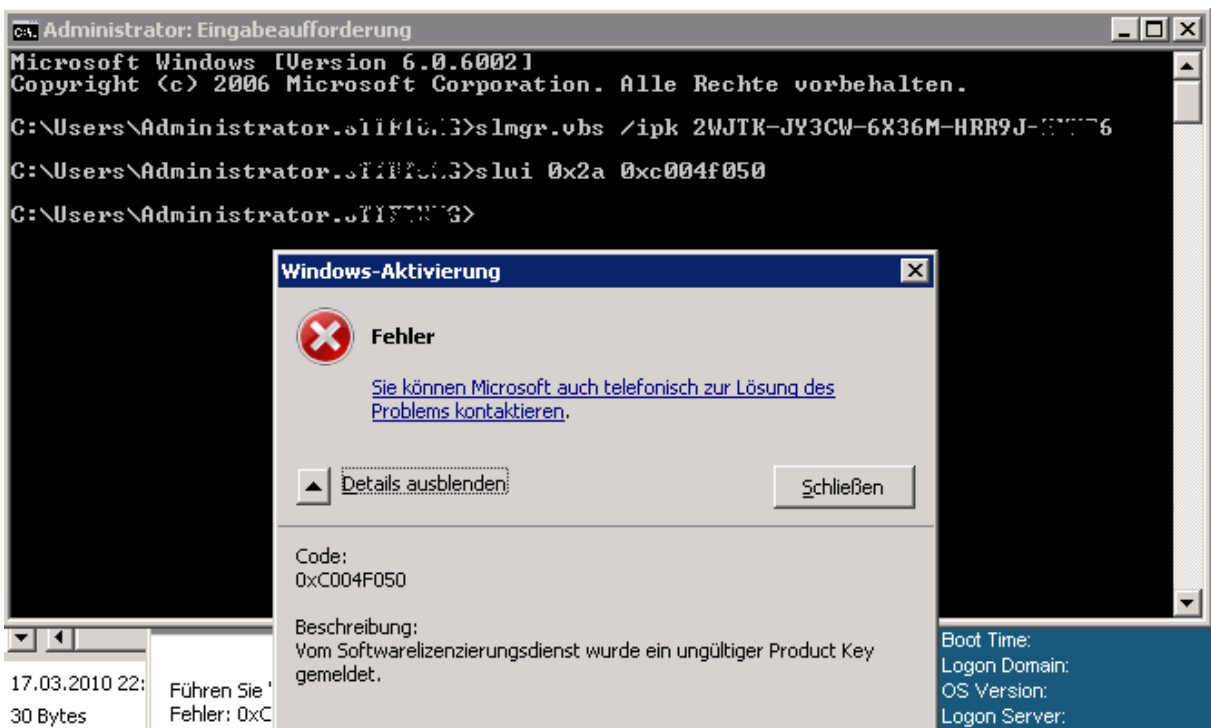
KMS Produktgruppen

Product key group	KMS-Host (Betriebssystem)	mögliche, zu aktivierende Betriebssysteme
Client VL for Windows 7	Windows Vista Windows 7 KMS for Windows Server 2003 1.2	Windows 7 Professional Windows 7 Enterprise Windows Vista Business Windows Vista Enterprise
Server Group A for Windows Server 2008 R2	KMS for Windows Server 2003 1.2 Windows Web Server 2008 Windows Web Server 2008 R2 Windows HPC Server 2008 Windows HPC Server 2008 R2	Beinhaltet auch Client VL: Windows Web Server 2008 R2 Windows Web Server 2008 Windows HPC Server 2008 R2 Windows HPC Server 2008
Server Group B for Windows Server 2008 R2	Beinhaltet auch die vorherigen: Windows Server 2008 R2 Standard Windows Server 2008 R2 Enterprise Windows Server 2008 Standard Windows Server 2008 Enterprise	Beinhaltet auch Client VL und Server Group A: Windows Server 2008 R2 Standard Windows Server 2008 R2 Enterprise Windows Server 2008 Standard Windows Server 2008 Enterprise
Server Group C	Beinhaltet auch die vorherigen: Windows Server 2008 R2 Datacenter Windows Server 2008 Datacenter Windows Server 2008 for Itanium-Based Systems	Beinhaltet auch Client VL und Server Group A und B: Windows Server 2008 R2 Datacenter Datacenter Windows Server 2008 Datacenter Windows Server 2008 for Itanium-Based Systems

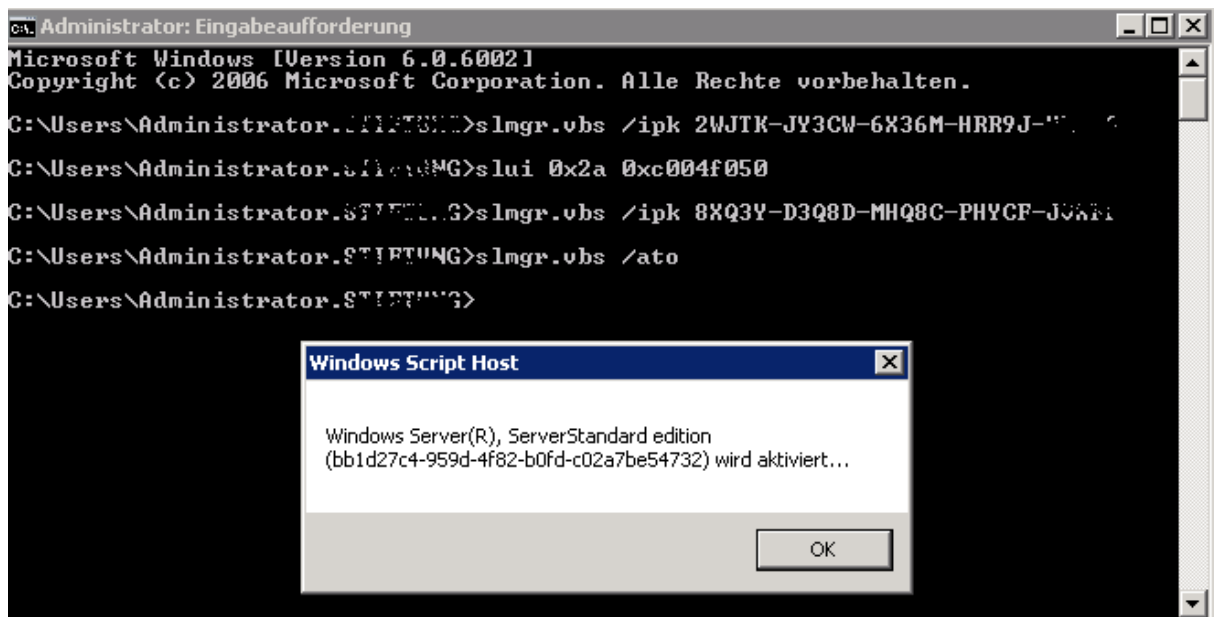
KMS Host aktivieren



Schlaegt fuer Windows 2008 R2 und Windows 7 Produktgruppe fehl. Windows Server 2008 funzt

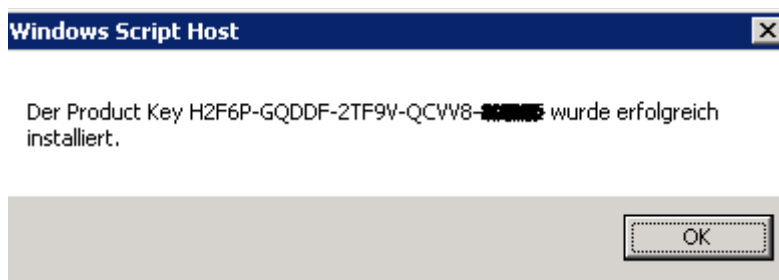


Ungueltiger Produkt Key

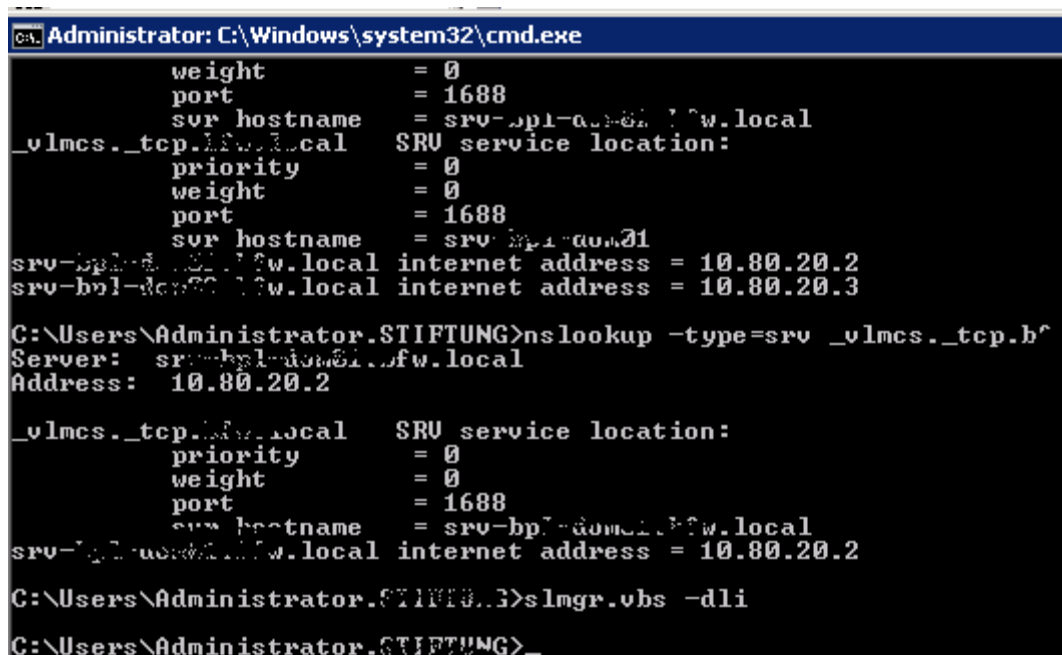


Aktivieren eines Produktes anhand des Produktgruppenkeys

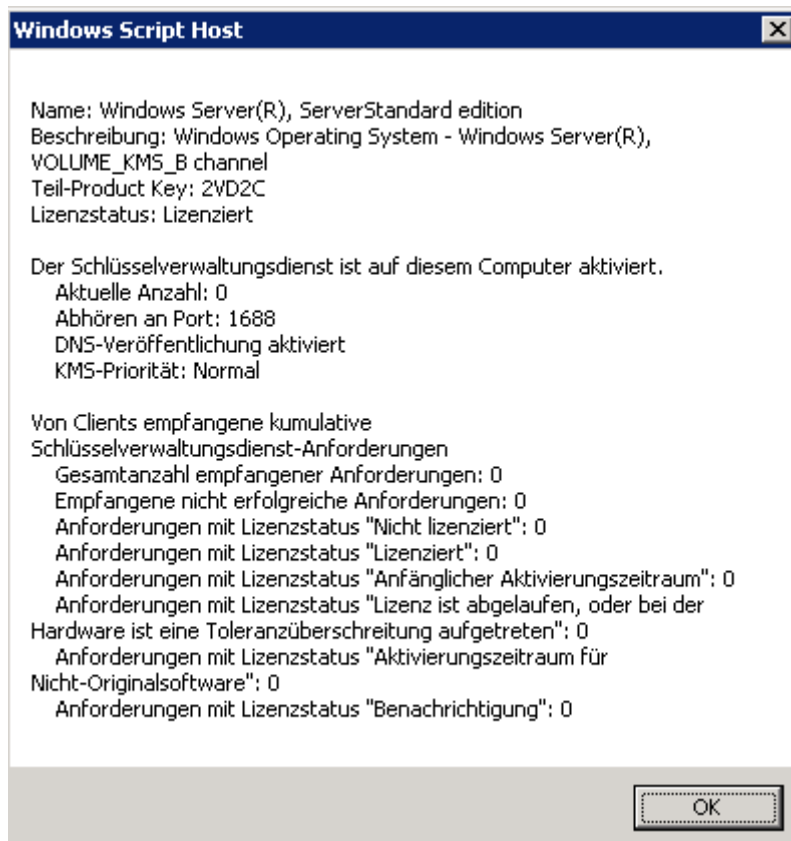
Erfolgreich



DNS Record wird automatisch gesetzt



SLMGR.VBS -DLI



Softwarelizenzierungsdienst neu starten

```
Administrator: C:\Windows\system32\cmd.exe
C:\Users\Administrator.STIFTUNG>net stop sppsvc
Systemfehler 1060 aufgetreten.
Der angegebene Dienst ist kein installierter Dienst.

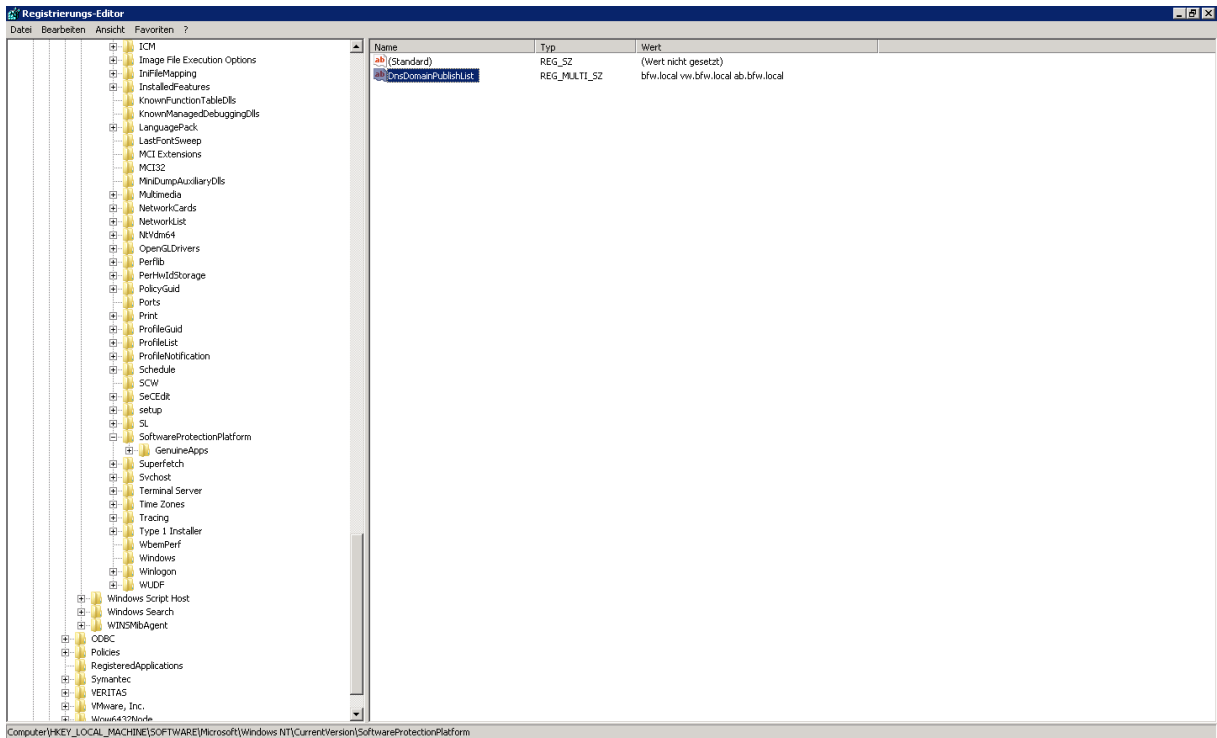
C:\Users\Administrator.STIFTUNG>net stop slsvc
Softwarelizenzierung wird beendet.
Softwarelizenzierung wurde erfolgreich beendet.

C:\Users\Administrator.STIFTUNG>net start slsvc
Softwarelizenzierung wird gestartet.
Softwarelizenzierung wurde erfolgreich gestartet.

C:\Users\Administrator.STIFTUNG>_
```

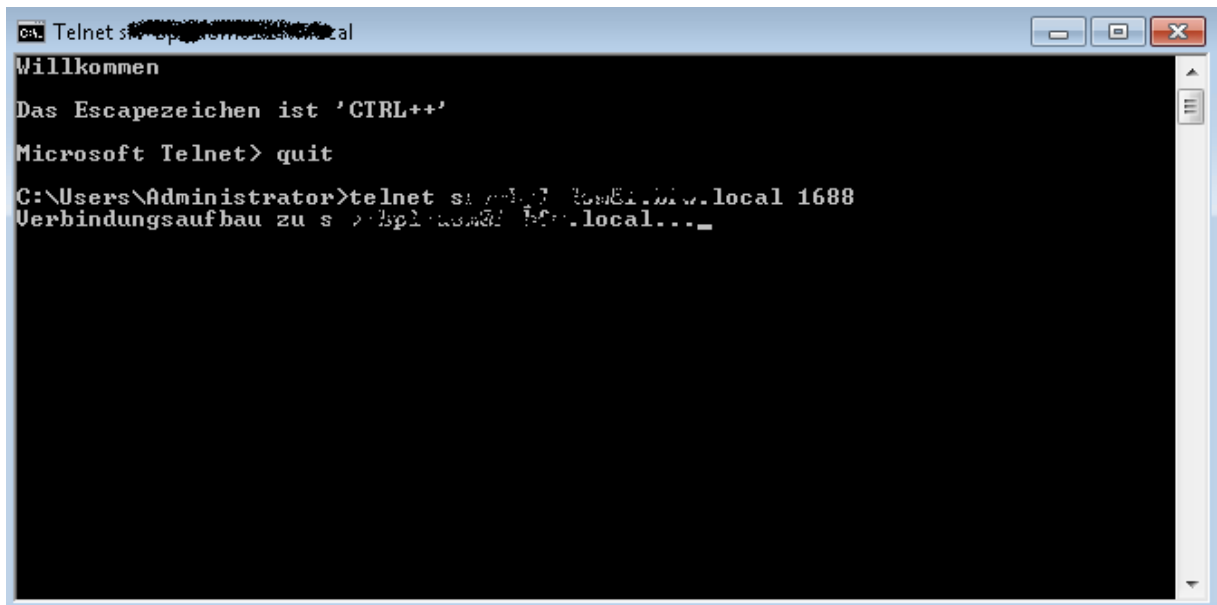
DNS Publish multiple domains

<http://technet.microsoft.com/en-us/library/dd772269.aspx>

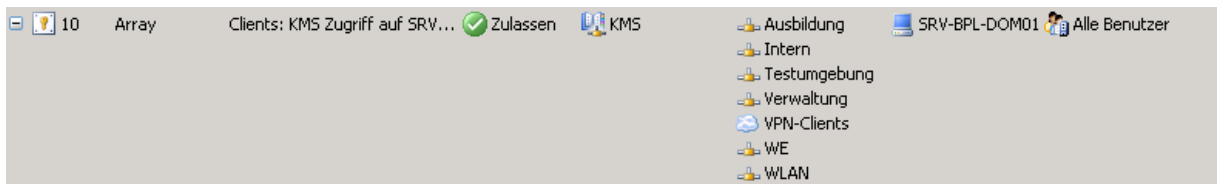


Software Lizenzierungsdienst neu starten

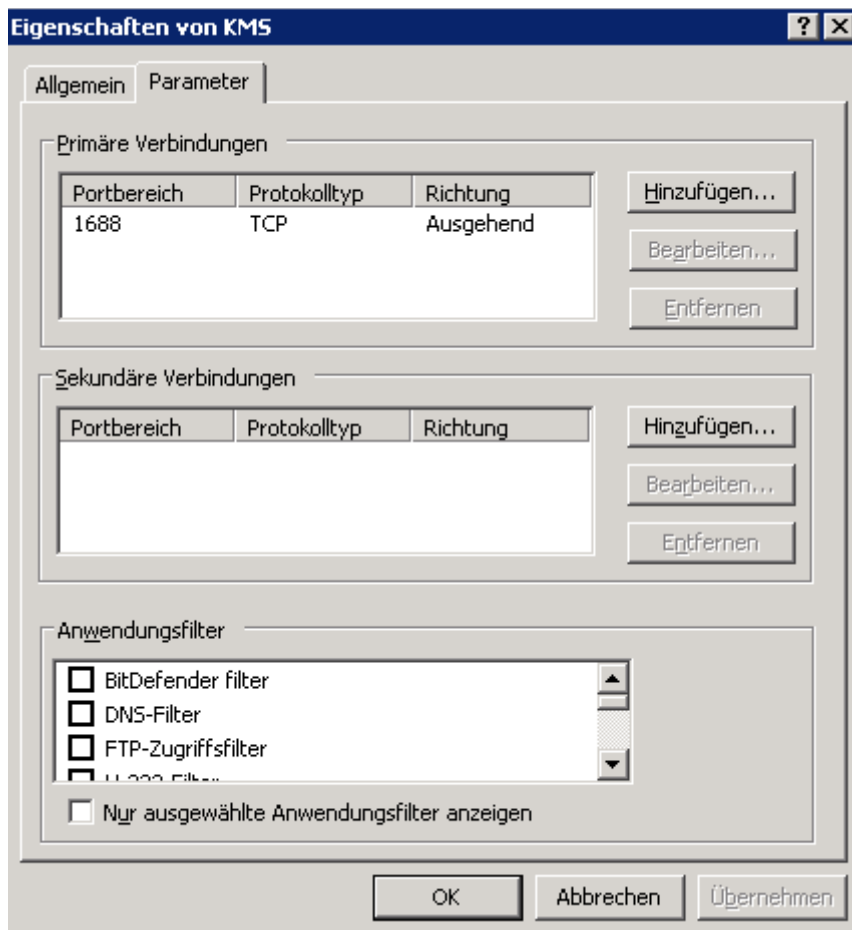
Firewall (Port 1688 TCP) muss geoeffnet sein



Am ISA Server frei schalten

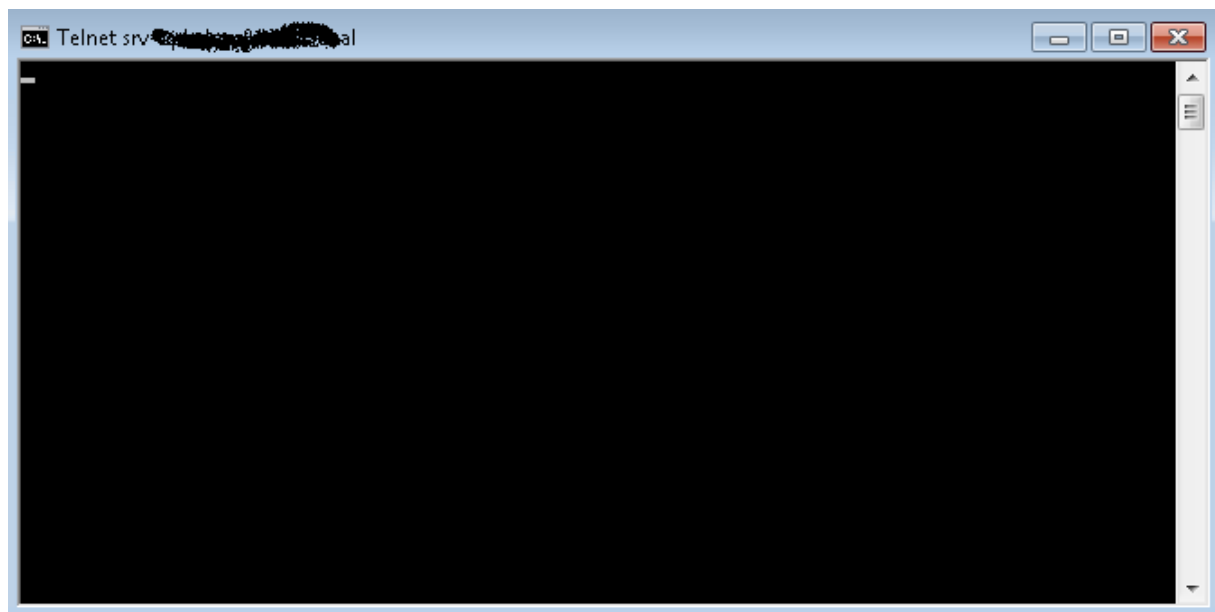


Eigenschaften des KMS Protokolls

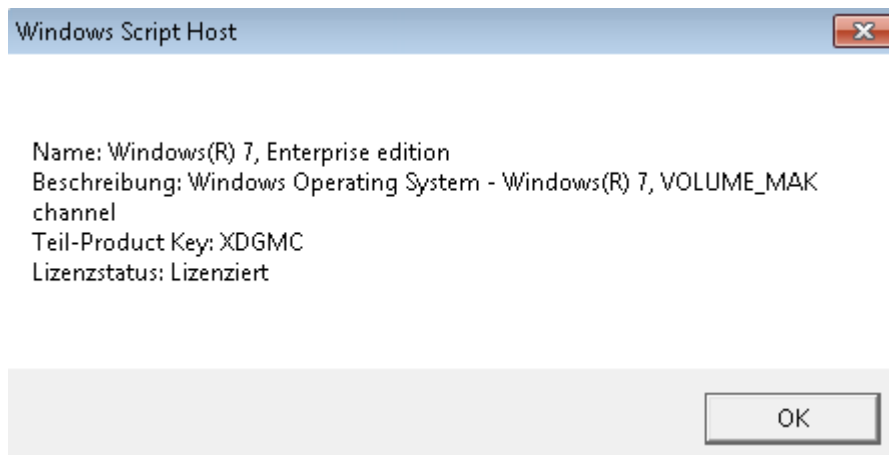


Portfunktionstest

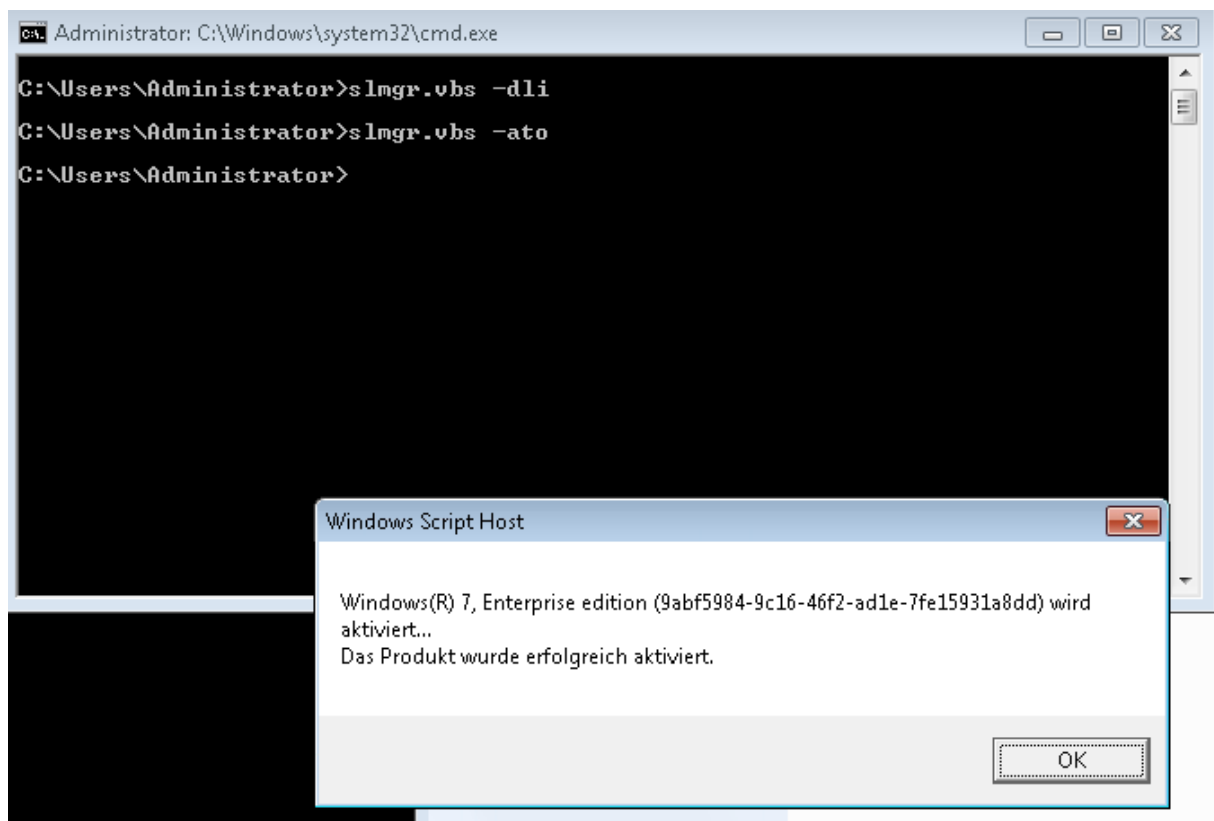
Geht



MAK in KMS aendern



Standard Key angeben



Standard Key 2008 R2 und Windows 7

slmgr.vbs /ipk <Setup-Key>

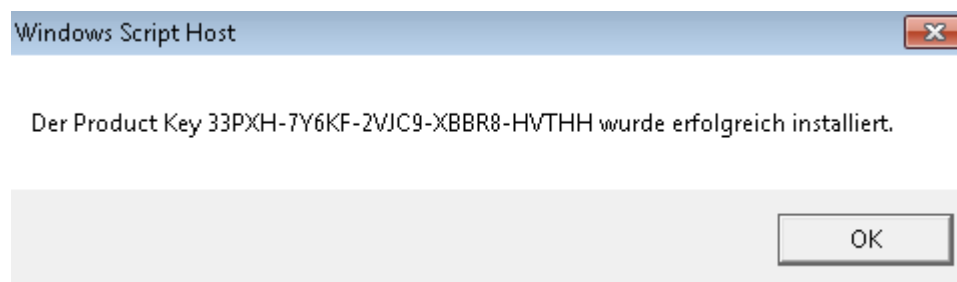
Operating System Edition	Product Key (Setup-Key)
Windows 7 Professional	FJ82H-XT6CR-J8D7P-XQJJ2-GPDD4
Windows 7 Professional N	MRPKT-YTG23-K7D7T-X2JMM-QY7MG
Windows 7 Enterprise	33PXH-7Y6KF-2VJC9-XBBR8-HVTHH
Windows 7 Enterprise N	YDRBP-3D83W-TY26F-D46B2-XCKRJ
Windows 7 Enterprise E	C29WB-22CC8-VJ326-GHFJW-H9DH4
Windows Server 2008 R2 HPC Edition	FKJQ8-TMCVP-FRMR7-4WR42-3JCD7
Windows Server 2008 R2 Datacenter	74YFP-3QFB3-KQT8W-PMXWJ-7M648
Windows Server 2008 R2 Enterprise	489J6-VHDMP-X63PK-3K798-CPX3Y
Windows Server 2008 R2 for Itanium-Based Systems	GT63C-RJFQ3-4GMB6-BRFB9-CB83V
Windows Server 2008 R2 Standard	YC6KT-GKW9T-YTKYR-T4X34-R7VHC
Windows Web Server 2008 R2	6TPJF-RBVHG-WBW2R-86QPH-6RTM4

Keys fuer 2008

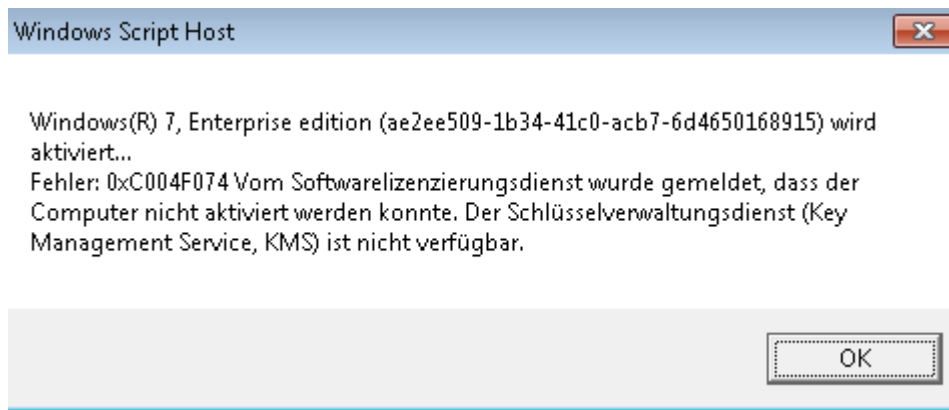
Table 2: KMS Client Setup Keys

Operating System Edition	Product Key
Windows Vista Business	YFKBB-PQJJV-G996G-VWGX-Y-2V3X8
Windows Vista Business N	HMBQG-8H2RH-C77VX-27R82-VMQBT
Windows Vista Enterprise	VKK3X-68KWM-X2YGT-QR4M6-4BWMV
Windows Vista Enterprise N	VTC42-BM838-43QHV-84HX6-XJXKV
Windows Server 2008 Datacenter	7M67G-PC374-GR742-YH8V4-TCBY3
Windows Server 2008 Datacenter without Hyper-V	22XQ2-VRXRG-P8D42-K34TD-G3QQC
Windows Server 2008 for Itanium-Based Systems	4DWFP-JF3DJ-B7DTH-78FJB-PDRHK
Windows Server 2008 Enterprise	YQGMW-MPWTJ-34KDK-48M3W-X4Q6V
Windows Server 2008 Enterprise without Hyper-V	39BXF-X8Q23-P2WWT-38T2F-G3FPG
Windows Server 2008 Standard	TM24T-X9RMF-VWXK6-X8JC9-BFGM2
Windows Server 2008 Standard without Hyper-V	W7VD6-7JFBR-RX26B-YKQ3Y-6FFFJ
Windows Web Server 2008	WYR28-R7TFJ-3X2YQ-YCY4H-M249D

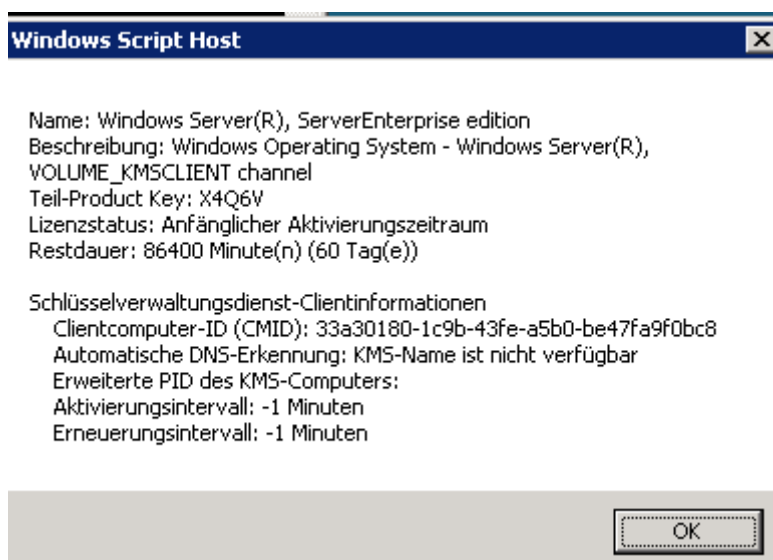
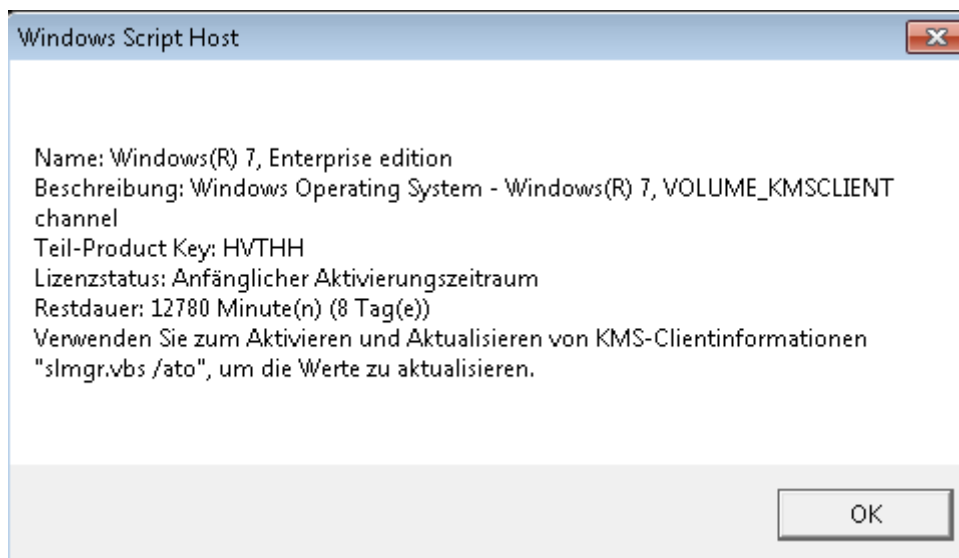
Erfolgreich installiert



slmgr.vbs -ato



KMS Server nicht verfügbare



SO, jetzt ist die Anzahl der zu aktivierenden Computer noch nicht ausreichend

