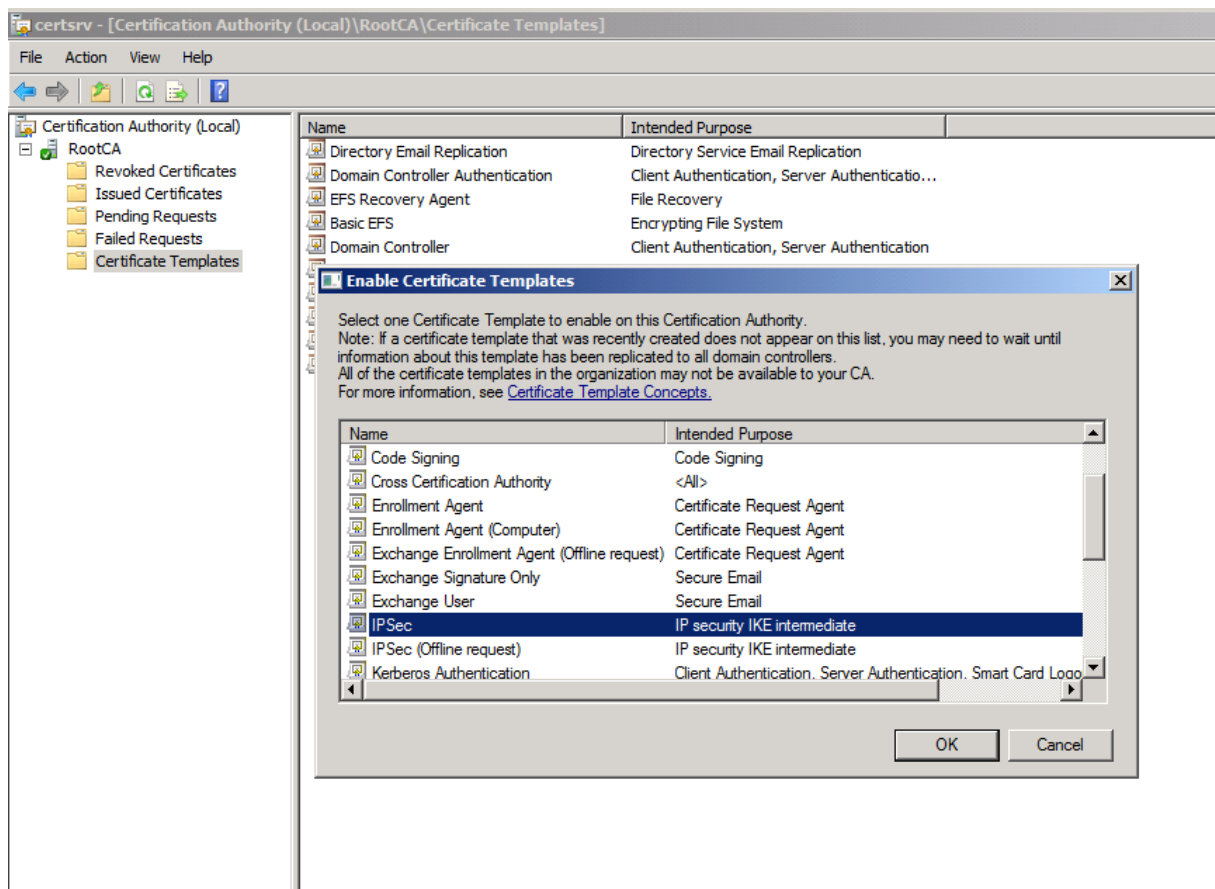
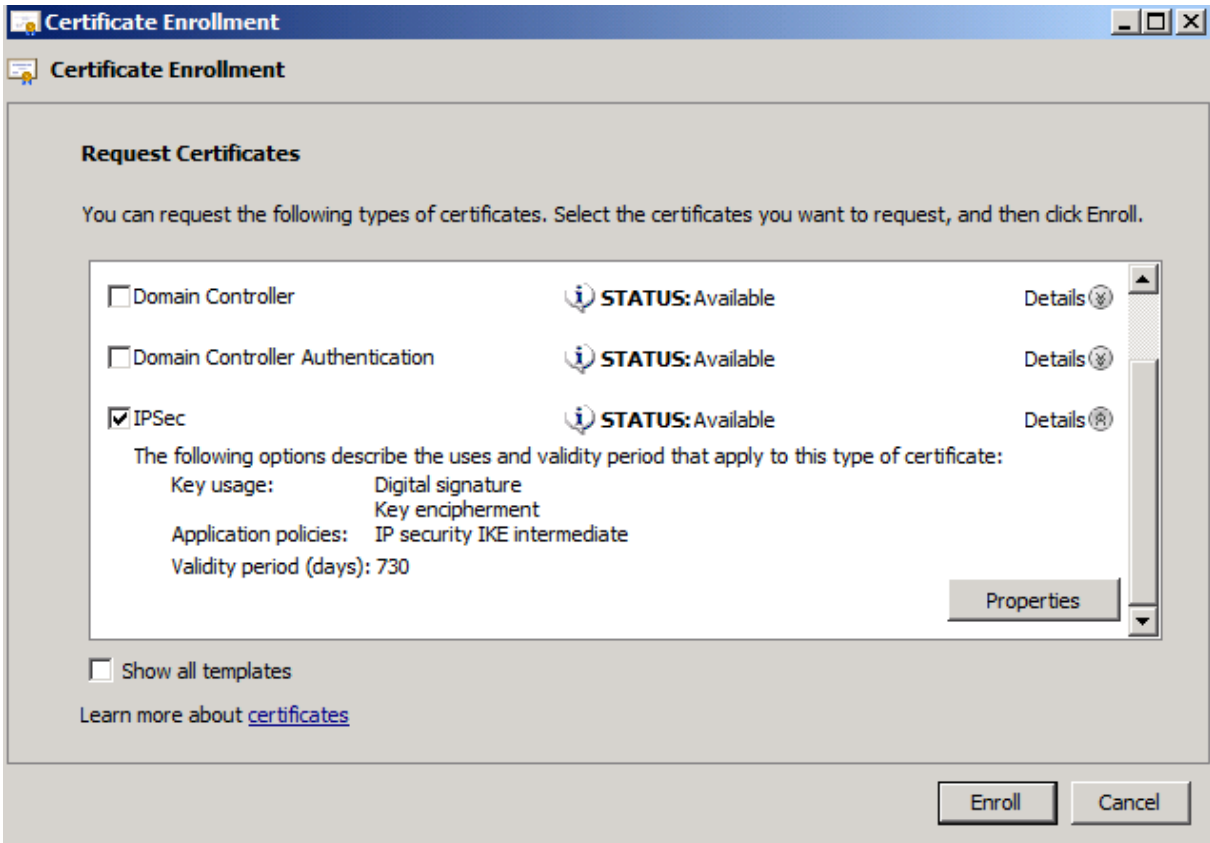


IPSEC Certificate via Webinterface in Windows Server 2008

CA Console



Ueber MMC (fuer Computer)



Properties of New Template [X]

Issuance Requirements | Superseded Templates | Extensions | Security
General | Request Handling | Cryptography | Subject Name | Server

Template display name:
IPSEC-Copy

Minimum Supported CAs: Windows Server 2008 Enterprise

Template name:
IPSEC-Copy

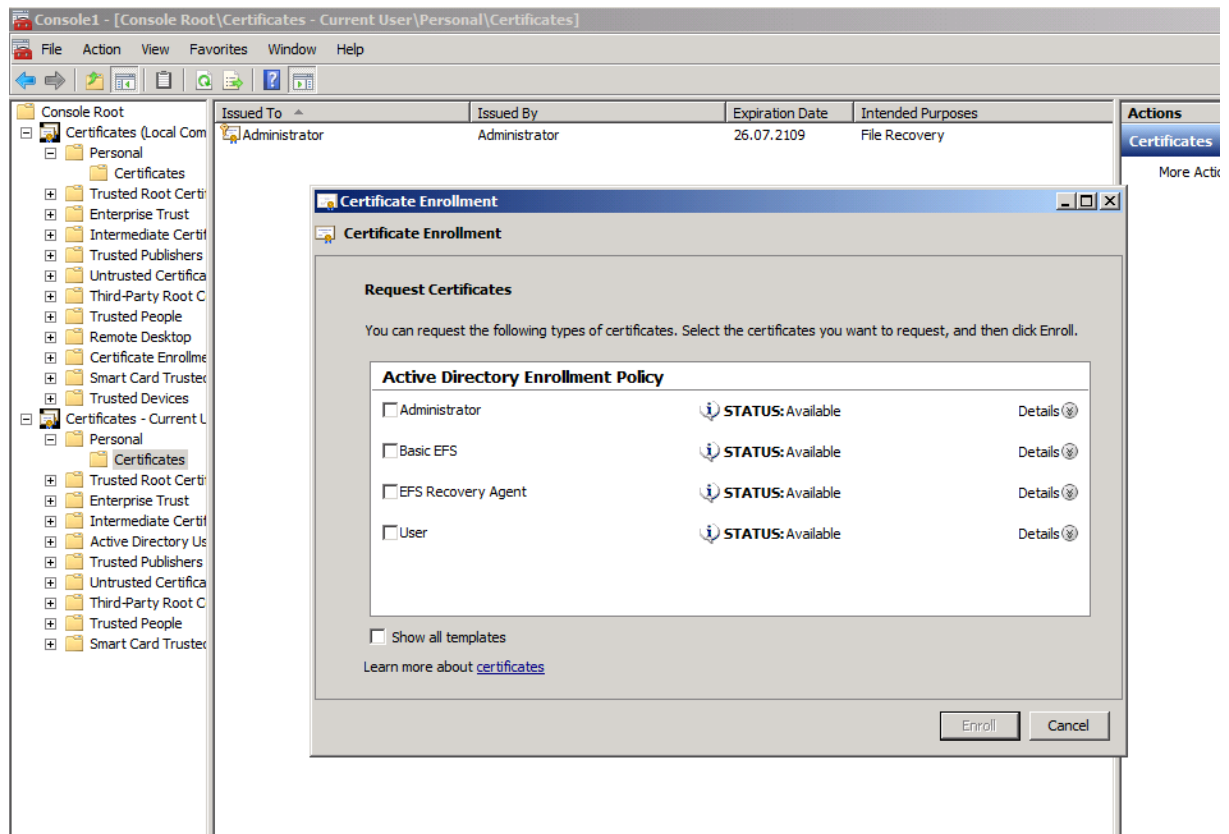
Validity period: 2 years
Renewal period: 6 weeks

Publish certificate in Active Directory
 Do not automatically reenroll if a duplicate certificate exists in Active Directory

For automatic renewal of smart card certificates, use the existing key if a new key cannot be created

OK Cancel Apply Help

Fuer den User



Fazit: IPSEC Certificates sind fuer den Computer. Wenn ueber das Webinterface darauf zugegriffen wird, erfolgt das immer im Benutzerkontext!