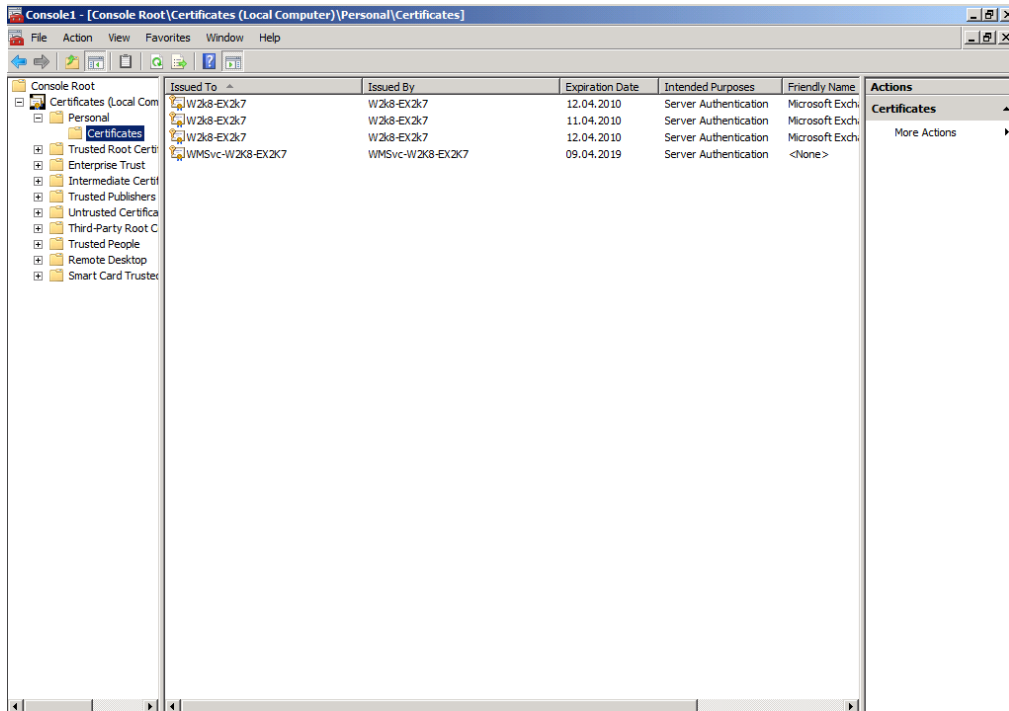
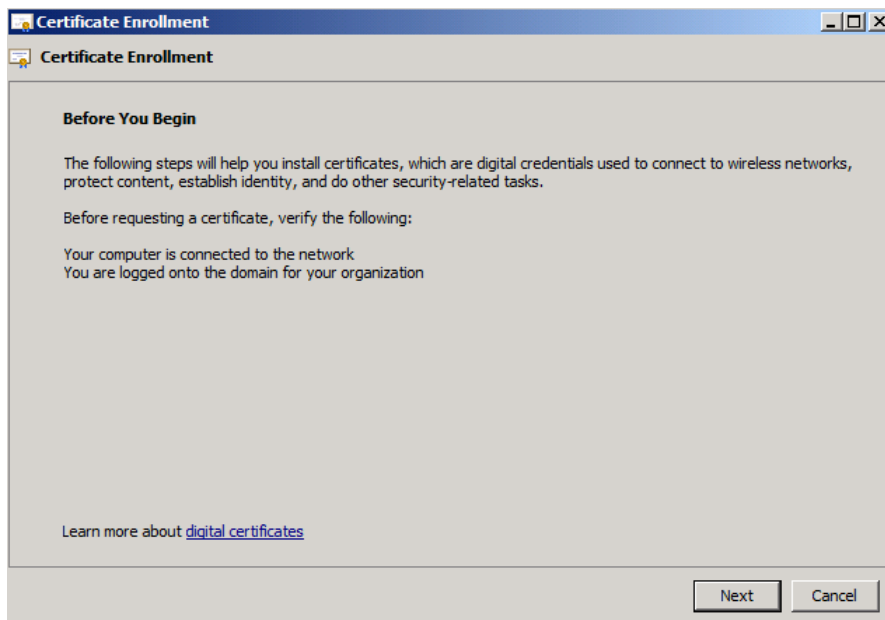


Ausstellen eines Webserver Zertifikats unter Windows Server 2008 per Certificate MMC fuer einen benutzerspezifischen Common Name (CN)

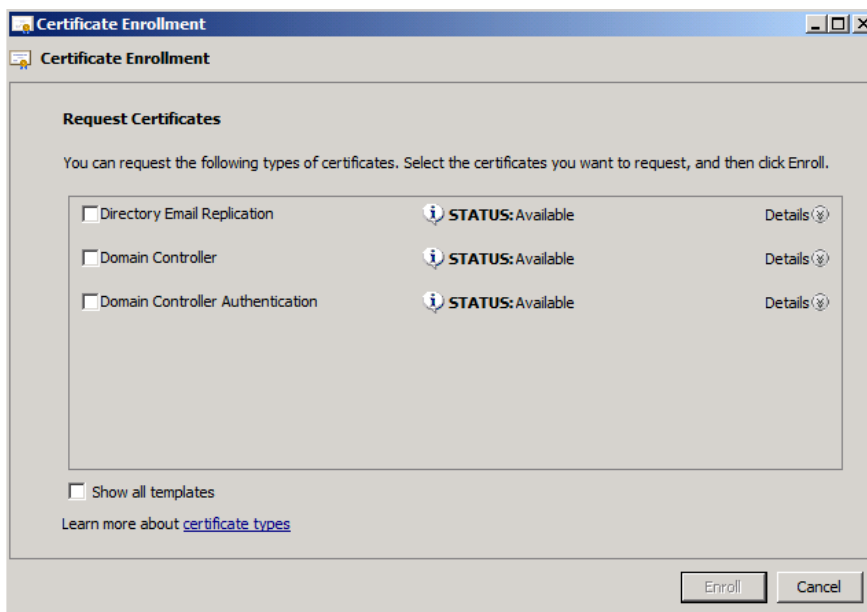
Start - MMC - SnapIn Hinzufuegen - Certificates - Local Computer



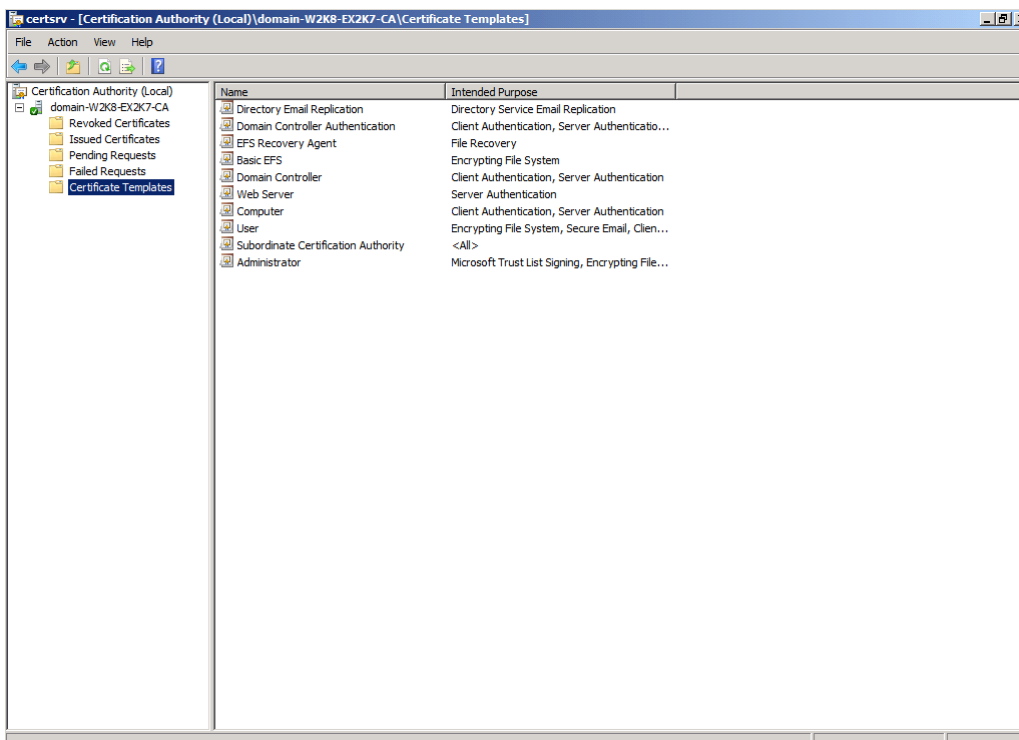
Request new certificate



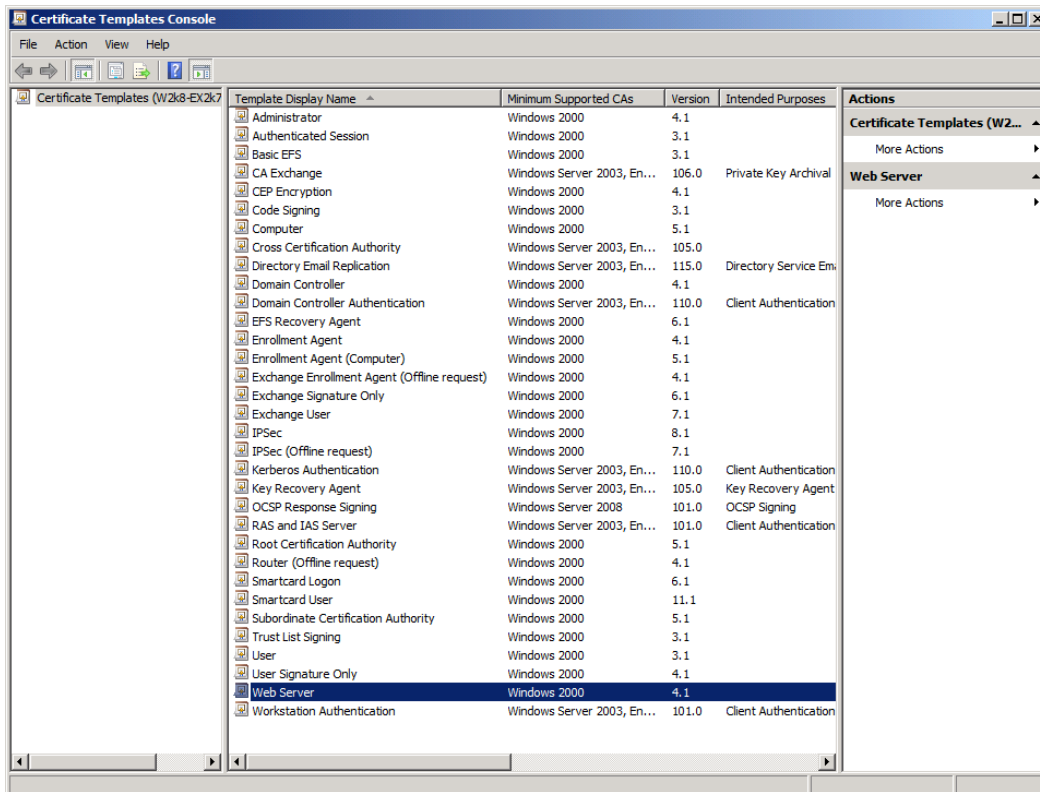
Z. B. Webserver fehlt



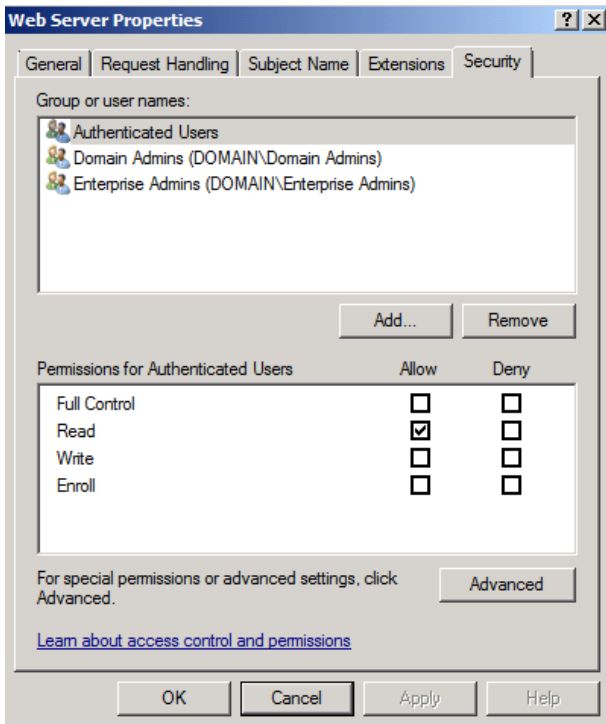
CA Verwaltung starten



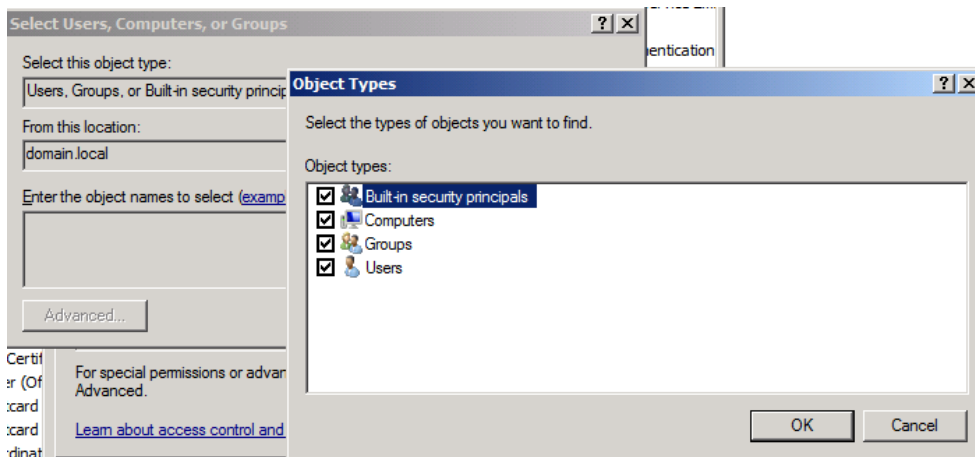
Rechtsklick - Certificate Templates - Manage



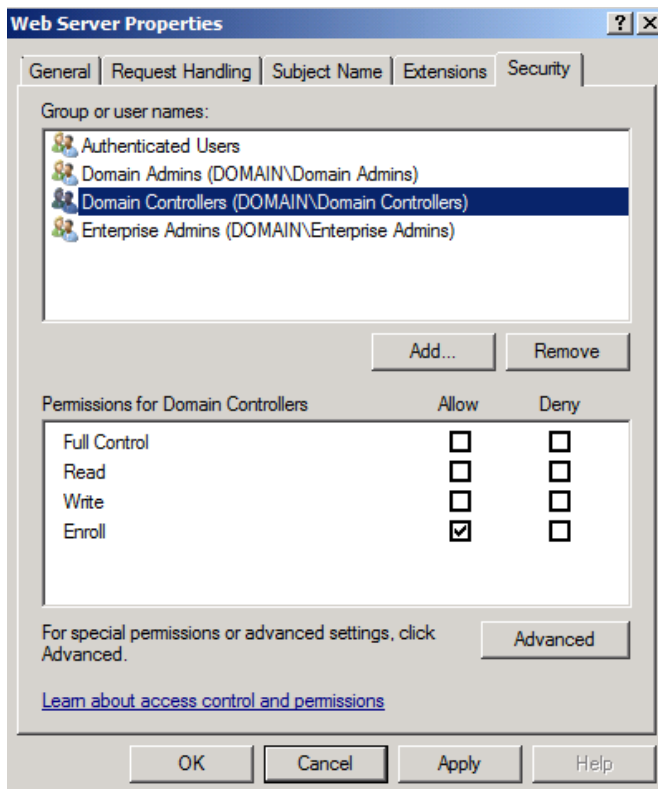
Properties Webserver Template



Object Type Computer hinzufuegen



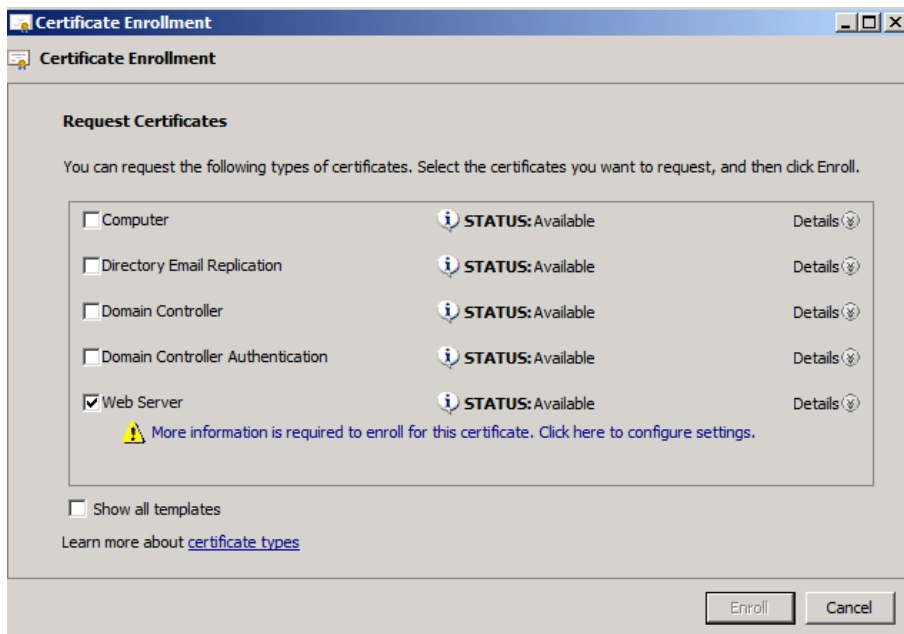
Gewuenschte Computergruppe hinzufuegen



Enroll Berechtigung vergeben

Request new certificate

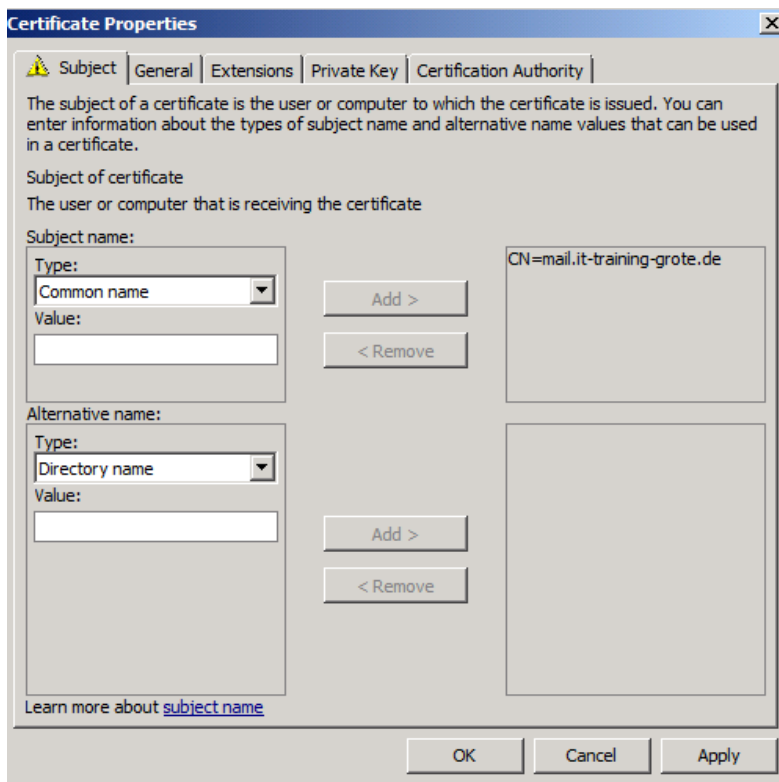
Nun ist es da :-)



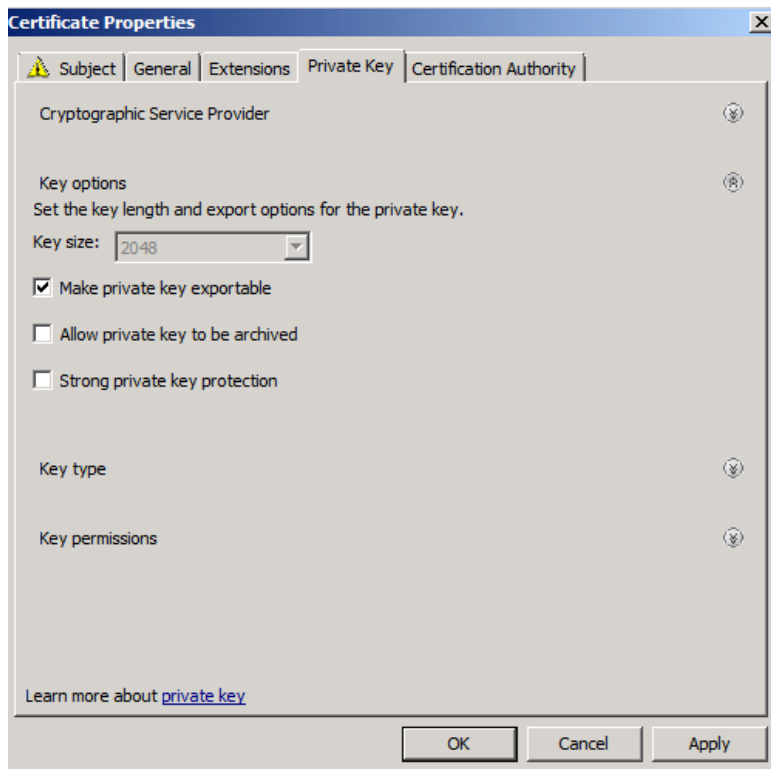
Click Details - Properties

Subject Name - Common Name auswaehlen

CN eingeben

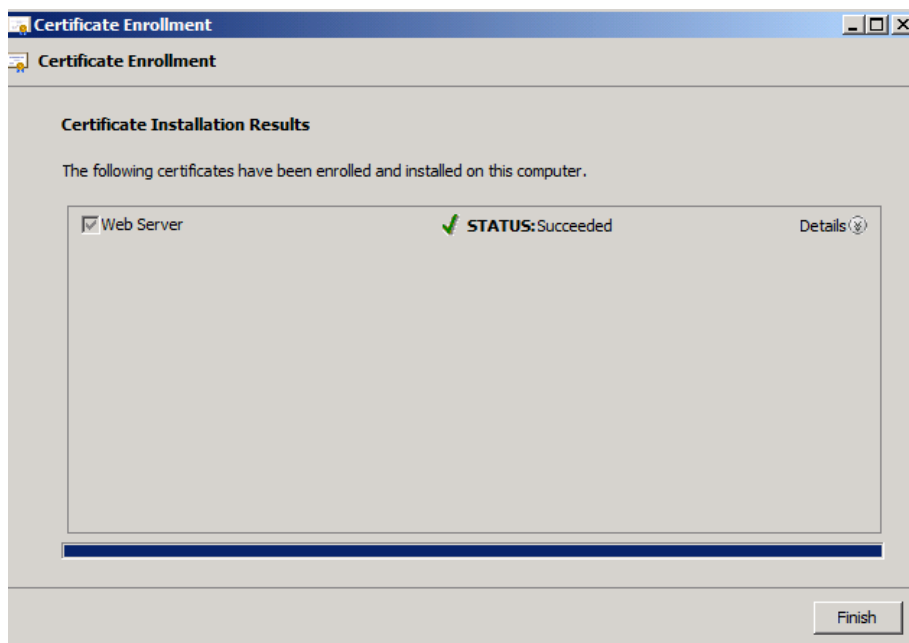


Ggfs. weitere Parameter wie z. B. Exportmöglichkeit des privaten Schlüssels

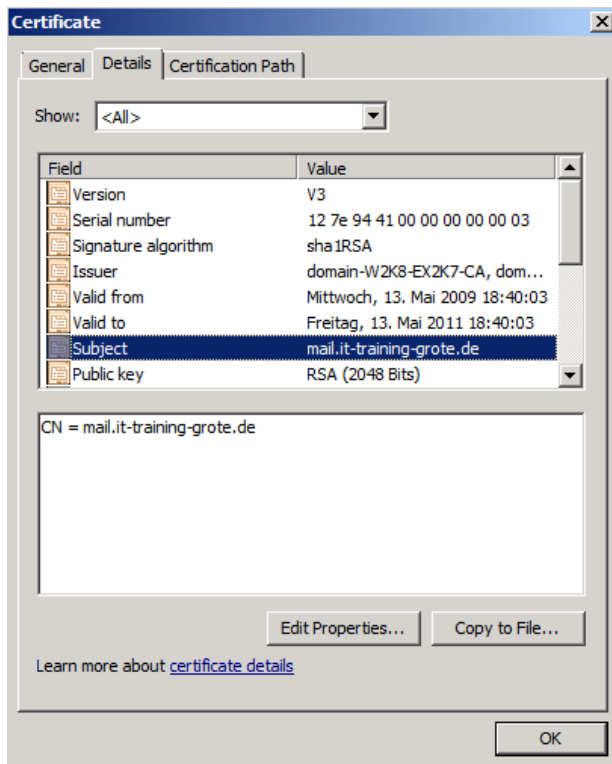


Zertifikat ausstellen (Enroll)

juchu - Erfolgreich



Stimmt der CN? ... Ja!



Zusaetzlich kann das Zertifikat jetzt per CA Webserverregistrierung angefordert werden

