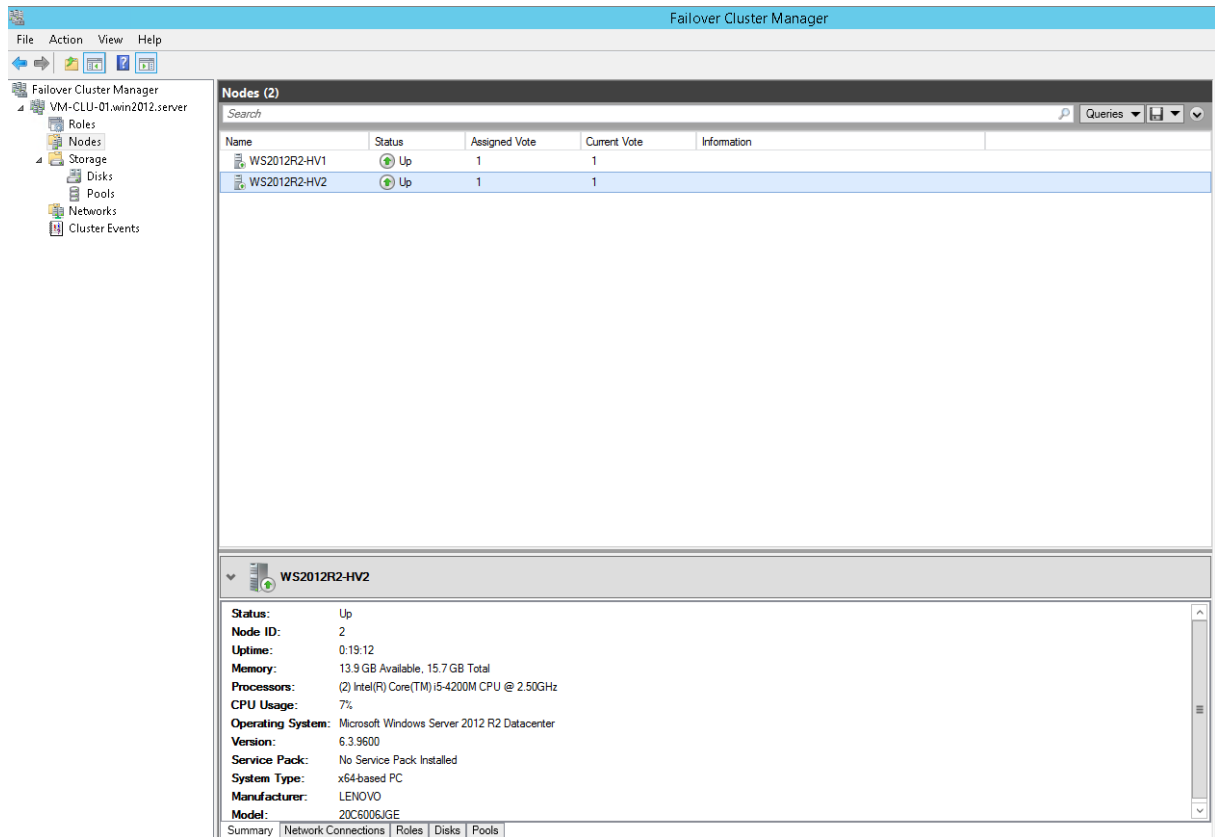
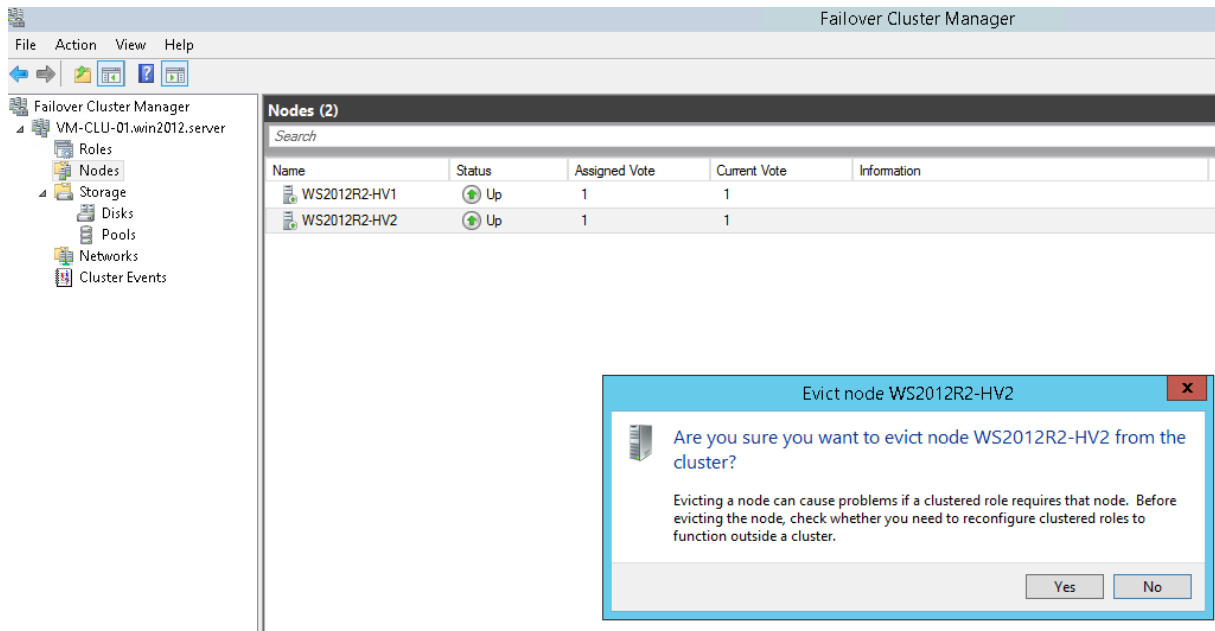


Migration zwei Knoten Windows Server 2012 R2 Cluster zu Windows Server Technical Preview

Windows Server 2012 R2 Cluster

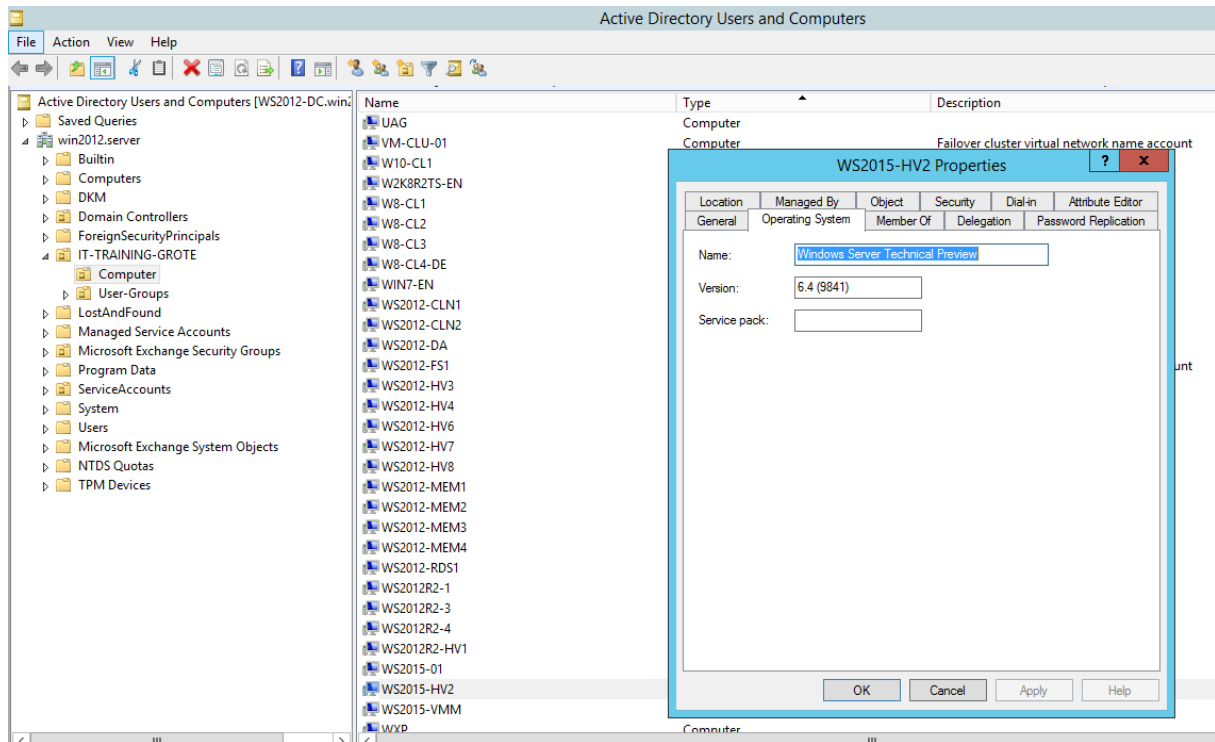


Evict Node

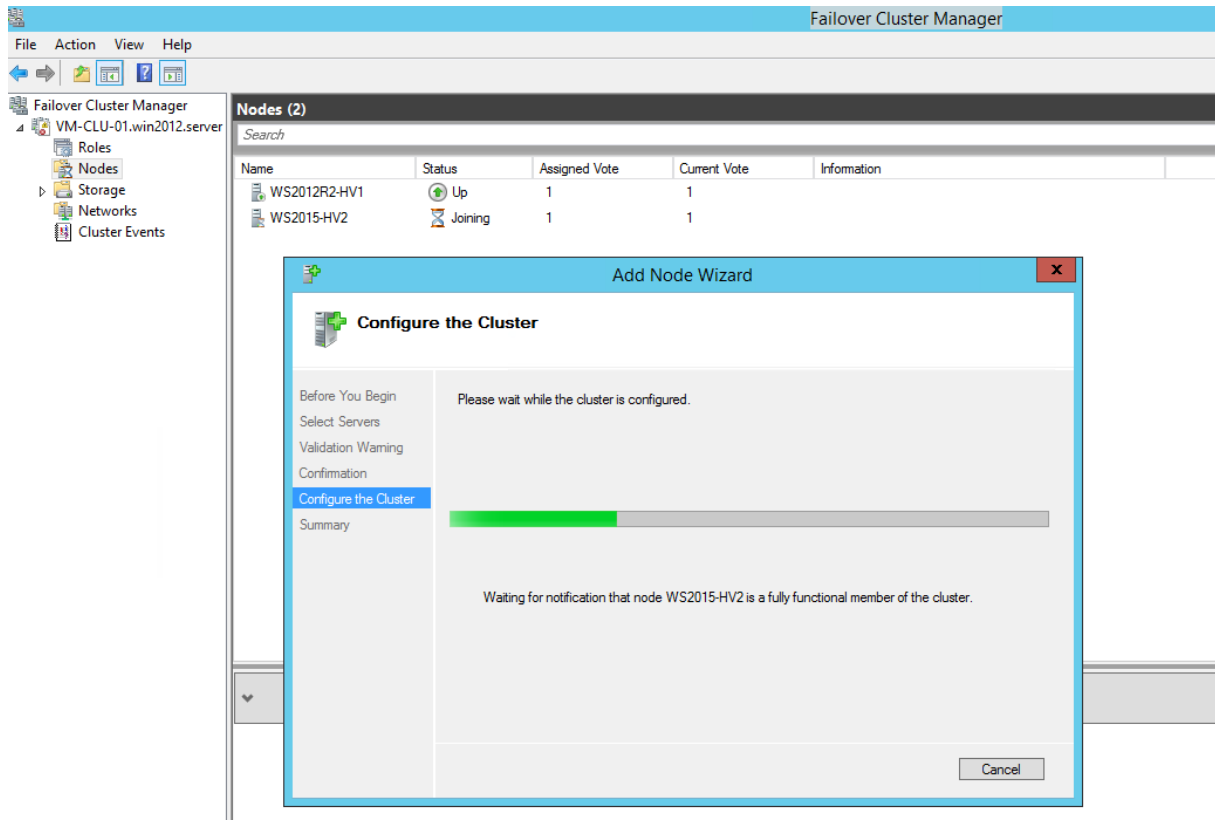


Windows Server 2015 installieren, Netzwerke, Storage Anbindung etc., Hyper-V Rolle installieren

So stellt sich der Server im Active Directory dar



WS2015 zum Cluster hinzufuegen



Live Mig Test

Failover Cluster Manager

Roles (4)

Name	Status	Type	Owner Node	Priority	Information
HV-RepBroker	Running	Hyper-V Replica Brok...	WS2012R2-HV1	Medium	
W2012R2	Running	Virtual Machine	WS2012R2-HV1	Medium	
WS2012-HV6	Off	Virtual Machine	WS2012R2-HV1	Medium	
WS2012R2-1	Off	Virtual Machine	WS2012R2-HV1	Medium	

Virtual Machine W2012R2

Status: 10:04
CPU Usage: 0%
Memory Demand: 2048 MB
Integration Services: OK
Computer Name: Windows Server 2012 R2 Standard
Date Created: 12/07/2014 12:01:16

Monitored Services:

Replication State: Not enabled

Move Virtual Machine

Select the destination node for live migration of 'W2012R2' from 'WS2012R2-HV1'.

Look for:

Cluster nodes:

Name	Status
WS2015-HV2	Up

OK Cancel

Funzt

Hyper-V Manager

Virtual Machines

Name	State	CPU Usage	Assigned Memory	Uptime	Status
W2012R2	Running	0 %	2048 MB	00:00:08	

Checkpoints

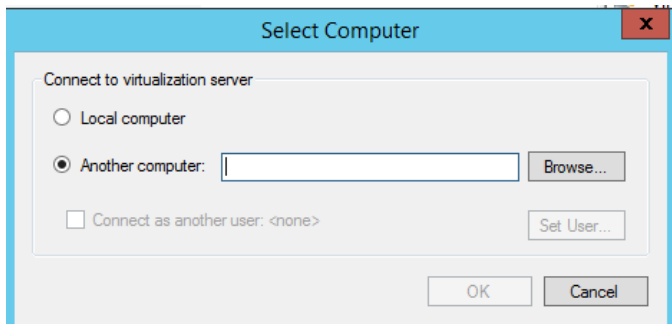
The selected virtual machine has no checkpoints.

W2012R2

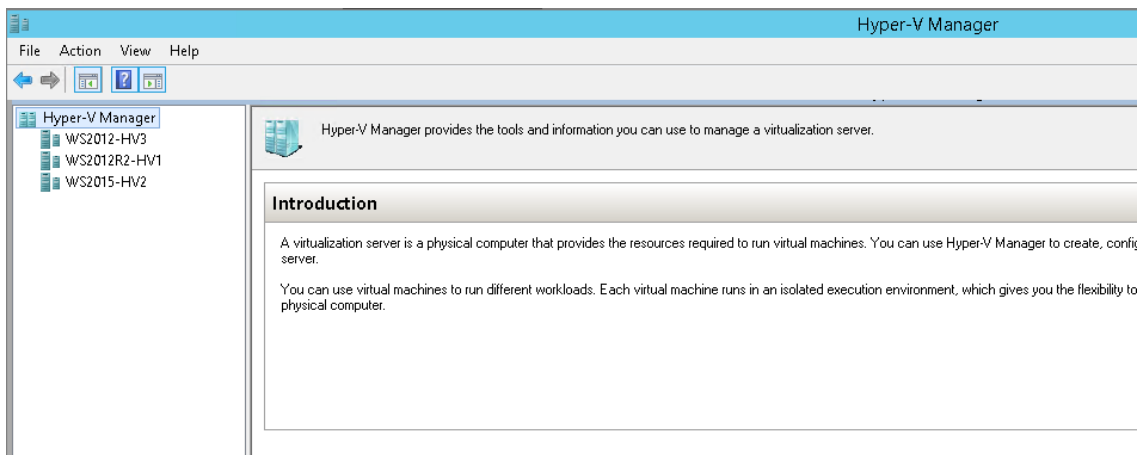
Created: 12.07.2014 12:01:16
Version: 5.0
Generation: 1
Notes: #CLUSTER-INVARIANT#: {787d46f-888f-4dc1-a23a-9b0bcd7b34e9}

Clustered: Yes
Heartbeat: OK (Applications Healthy)

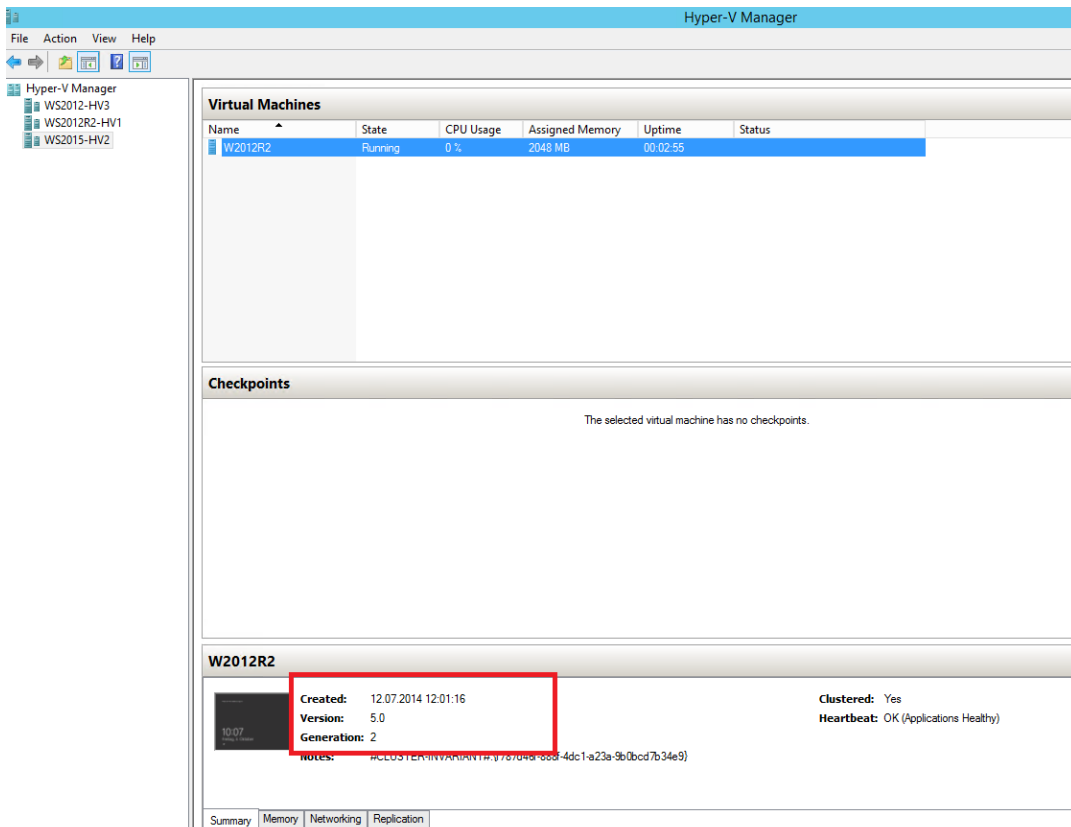
Neue Option zum Hinzufügen von Hyper-V Servern mit anderen Credentials



Neuer Hyper-V Server in der Verwaltungskonsole. Windows Server Technical Preview kann jetzt WS 2012 / 2012 R2 und Technical Preview Hyper-V verwalten



Maschine konvertieren von v5 auf V6. Es muss eine Gen2 VM sein



VM muss ausgeschaltet sein

```
Administrator: Windows PowerShell
PS C:\Users\administrator.WIN2012> Update-VMConfigurationVersion -name w2012r2 -computername ws2015-hv1

Confirm
Are you sure you want to perform this action?
Performing a configuration version update of "W2012R2" will prevent it from being migrated to or imported on previous
versions of Windows. This operation is not reversible.
[Y] Yes [A] Yes to All [N] No [L] No to All [S] Suspend [?] Help (default is "Y"): _
```

Created: 11.05.2014 15:38:02 Clustered: Yes

Version: 6.0

Generation: 2

Notes: #CLUSTER-INVARIANT#: {1fe9b309-462f-41a4-9205-a68f0ef9160a}

Eine v6 VM verwendet jetzt keine XML Config File mehr, sondern ein Config File im Binaer Format

6571A6CB-5D8B-4C73-925F-822B2A5F43DB	03.10.2014 15:29	File folder	
6571A6CB-5D8B-4C73-925F-822B2A5F43DB.vmcx	03.10.2014 15:34	VMCX File	91 KB
6571A6CB-5D8B-4C73-925F-822B2A5F43DB.VMRS	03.10.2014 15:34	VMRS File	2.097.228 KB

In v6 VM Kann das RAM im laufenden Betrieb veraendert werden

WS2012R2-1 Running 0% 1024 MB 00:00:12

Settings for WS2012R2-1 on WS2015-HV2

WS2012R2-1

- Hardware
 - Add Hardware
 - Firmware
 - Boot from File
 - Memory **2048 MB**
 - Processor
 - 1 Virtual processor
 - SCSI Controller
 - Hard Drive
 - WS2012R2-1.vhdx
 - Network Adapter
 - Dell_CLU-01
- Management
 - Name
 - WS2012R2-1

Memory

You can configure options for assigning and managing memory for this virtual machine. Specify the amount of memory that this virtual machine will be started with.

Startup RAM: MB

Dynamic Memory

You can manage the amount of memory assigned to this virtual machine dynamically within the specified range.

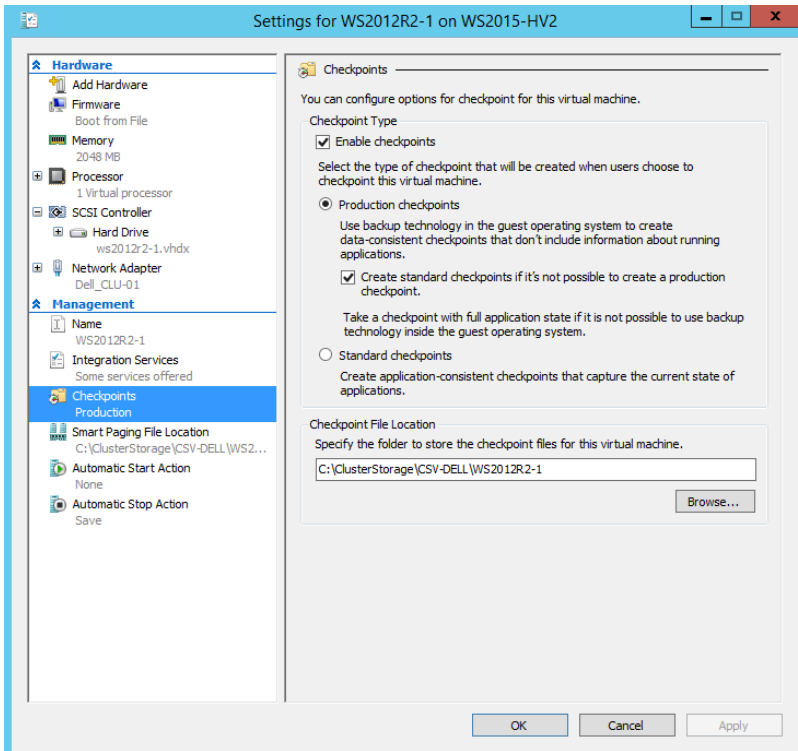
Enable Dynamic Memory

Minimum RAM: MB

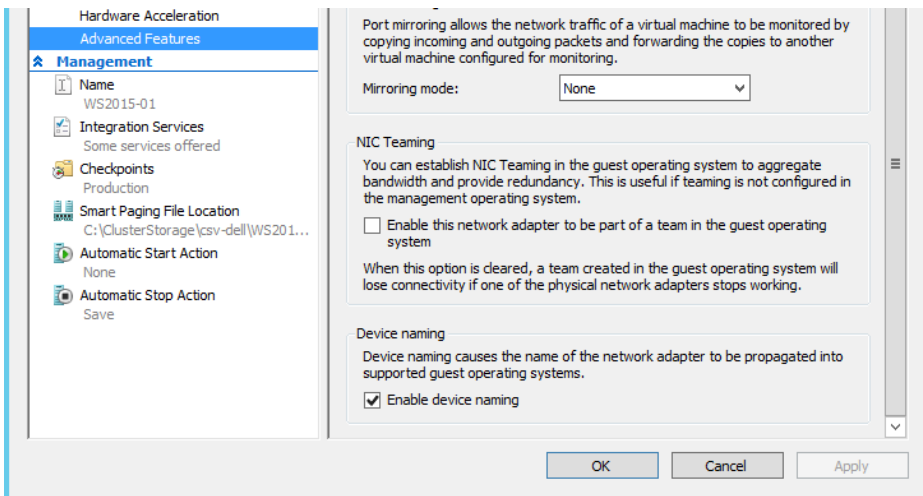
Maximum RAM: MB

Specify the percentage of memory that Hyper-V should try to reserve as a buffer.

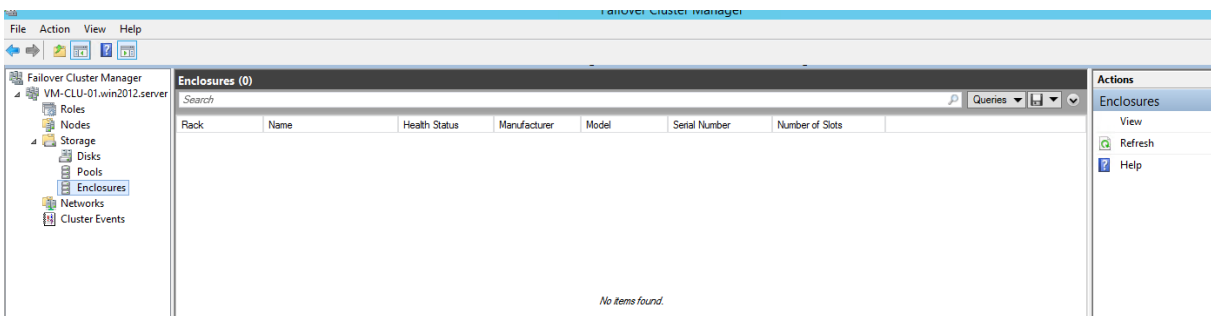
Es werden jetzt Production Checkpoints verwendet, welche VSS des OS in der VM nutzen



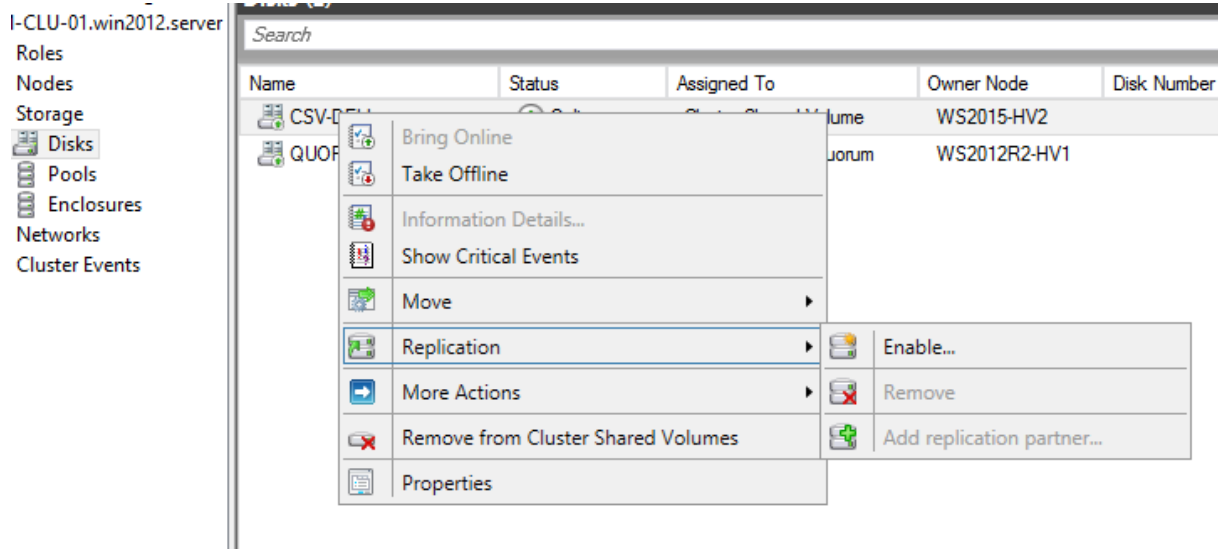
CDN in VM ☺ Cool



Neue GUI Funktionen



Storage Replication



Zu diesen Funktionen kann ich nach der Teched Europe mehr schreiben ☺

Clusterlevel updaten, nachdem alle Clusterknoten und VMs migriert / aktualisiert wurden

