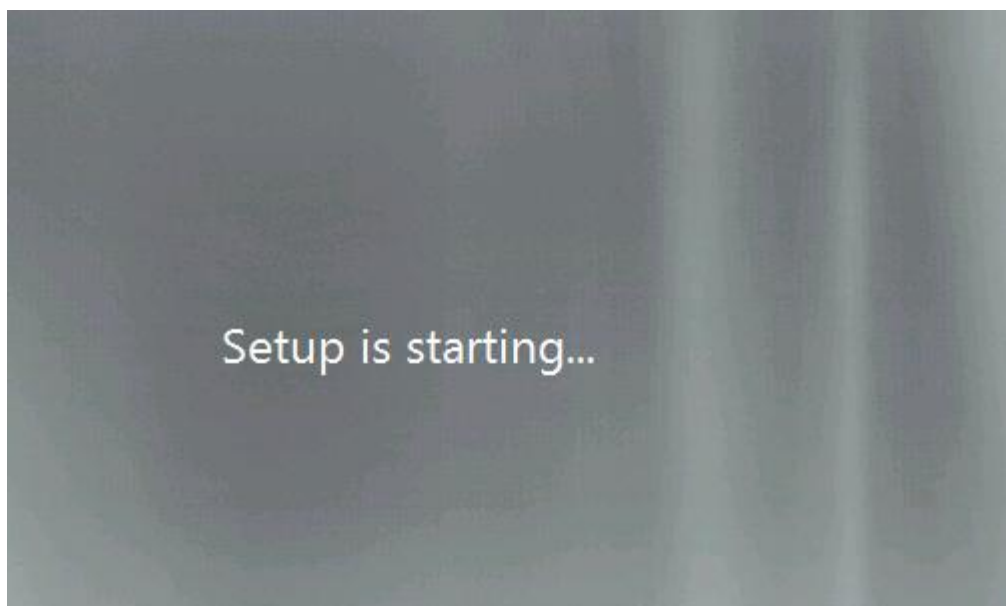
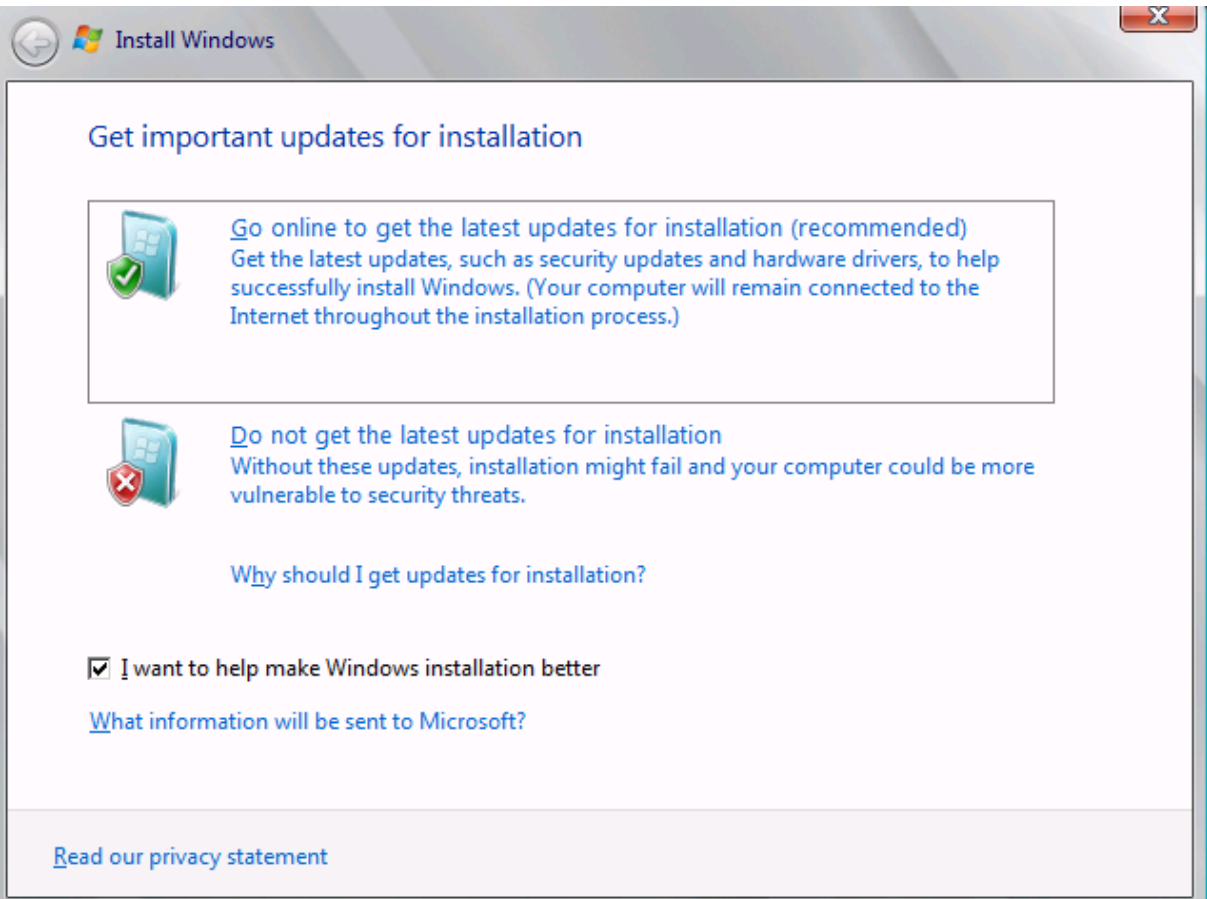


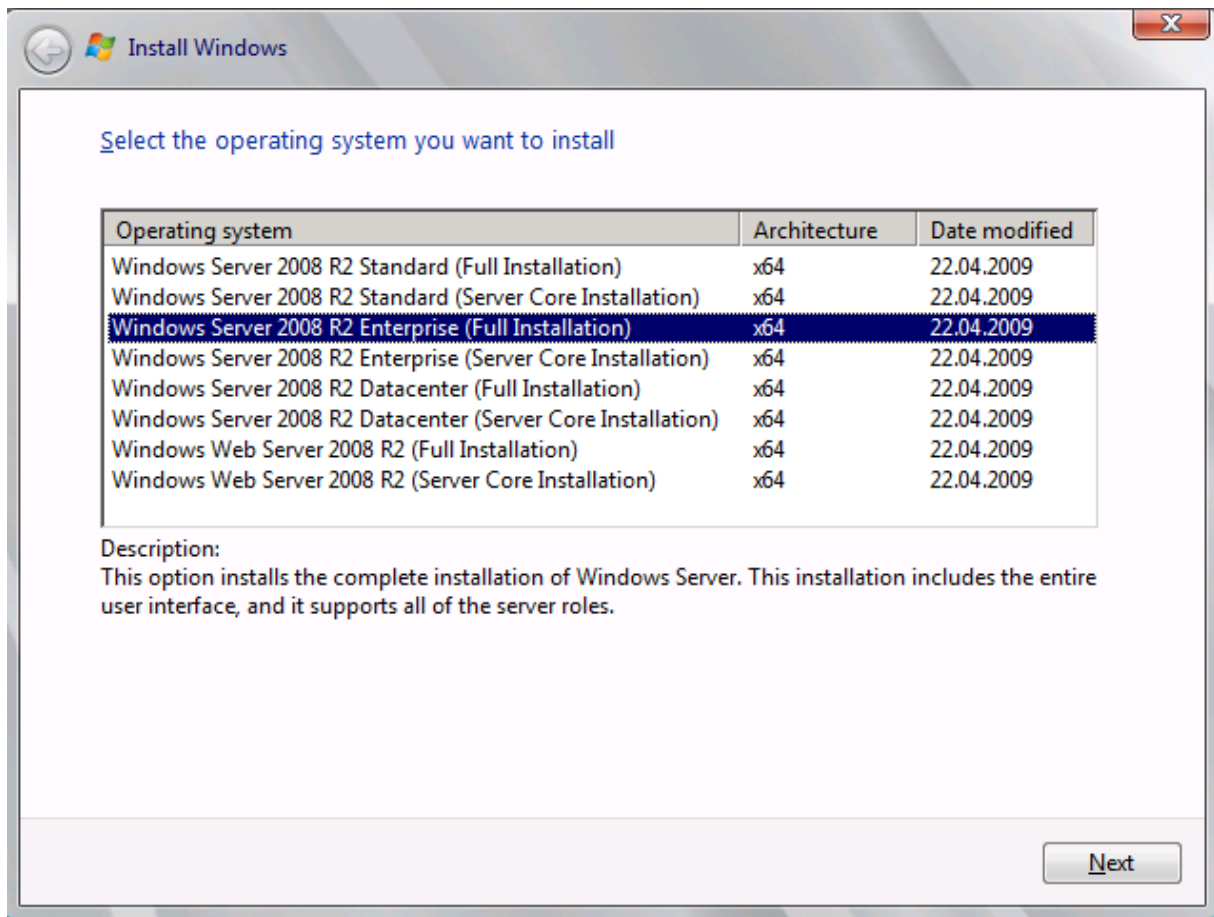
## Windows Server 2008 Update auf Windows Server 2008 R2 RC



Updates ziehen ...

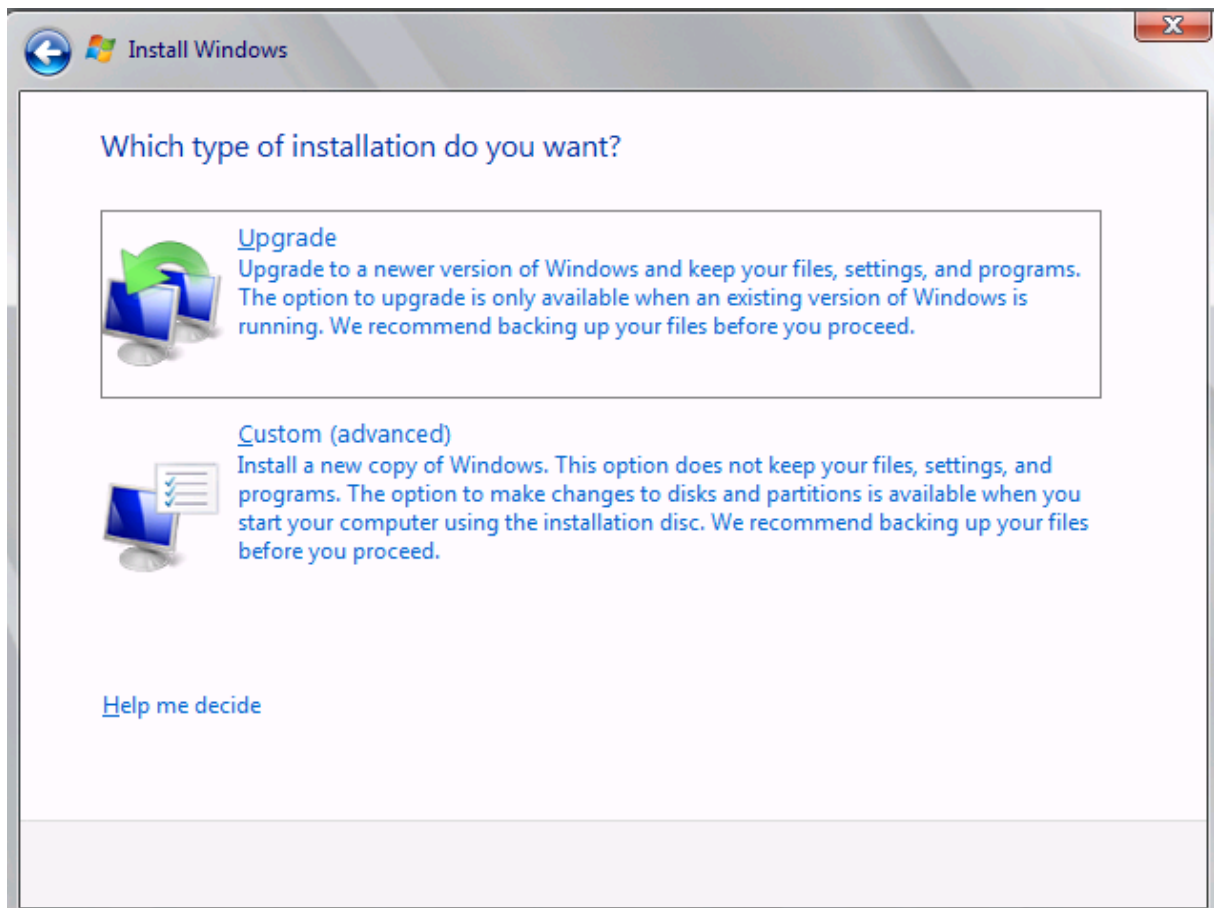


Version waehlen

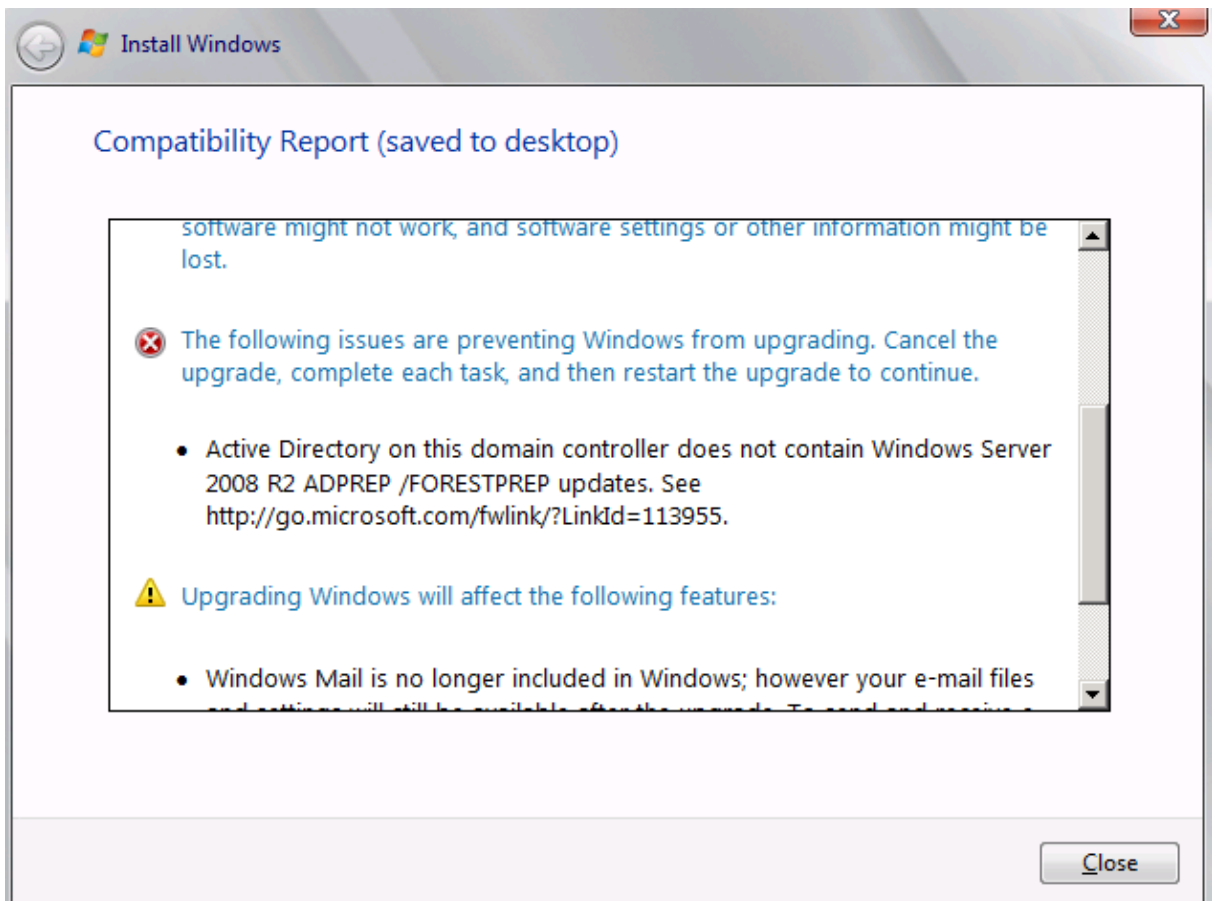


Lizenzbestimmungen lesen und zustimmen

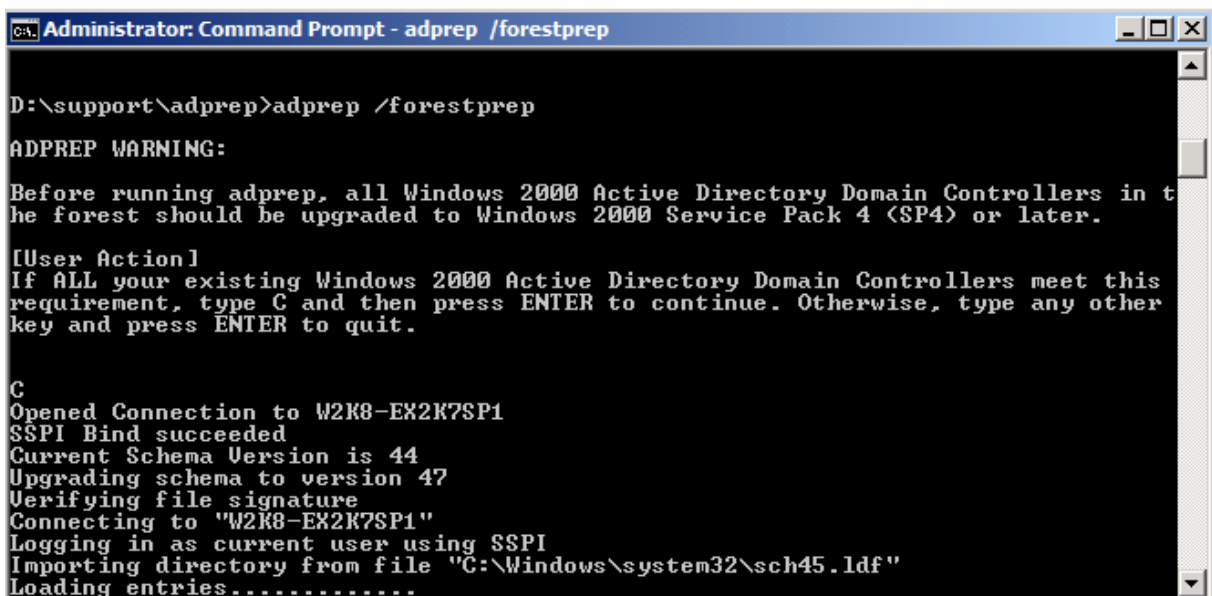
Upgrade oder Neuinstallation?



Wie immer: ADPREP haut dazwischen :-)

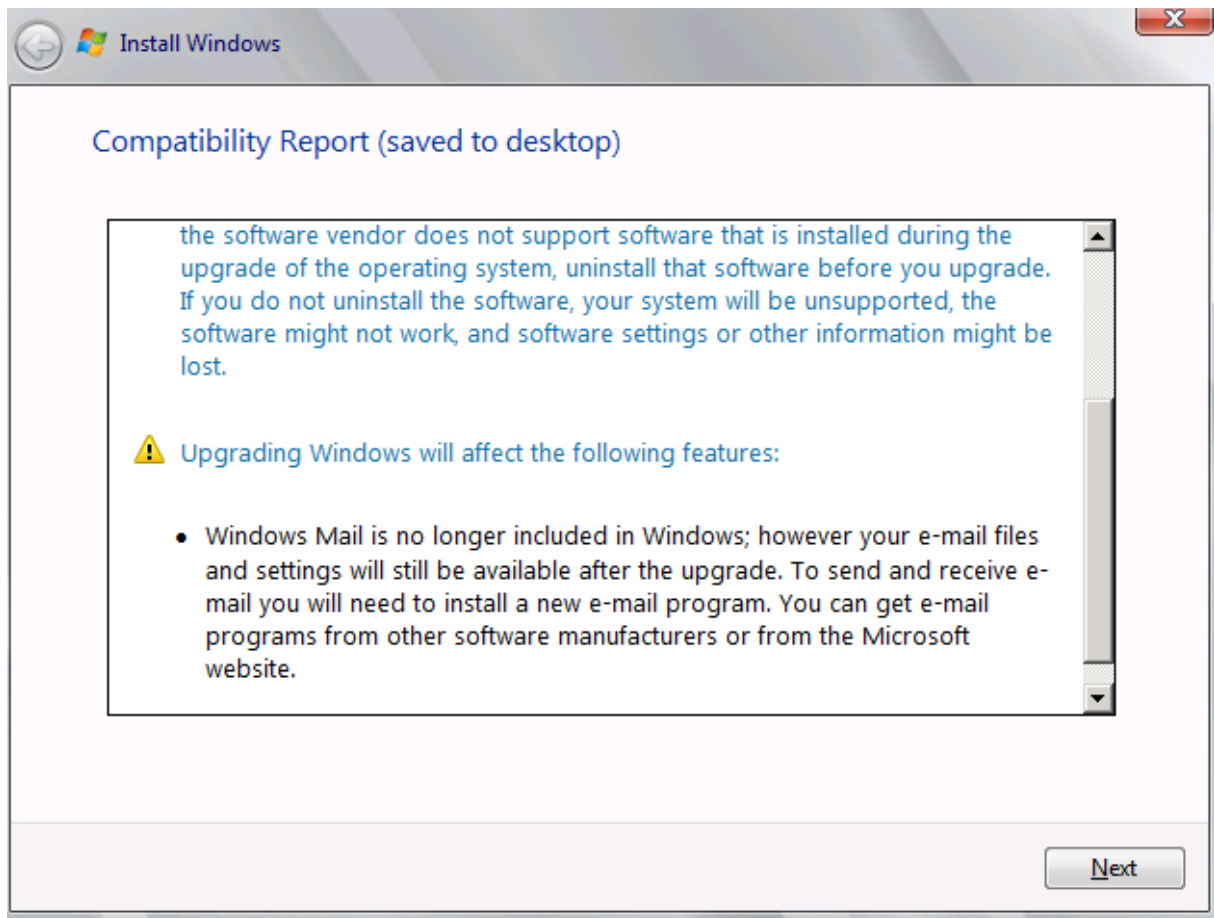


Ab dafuer

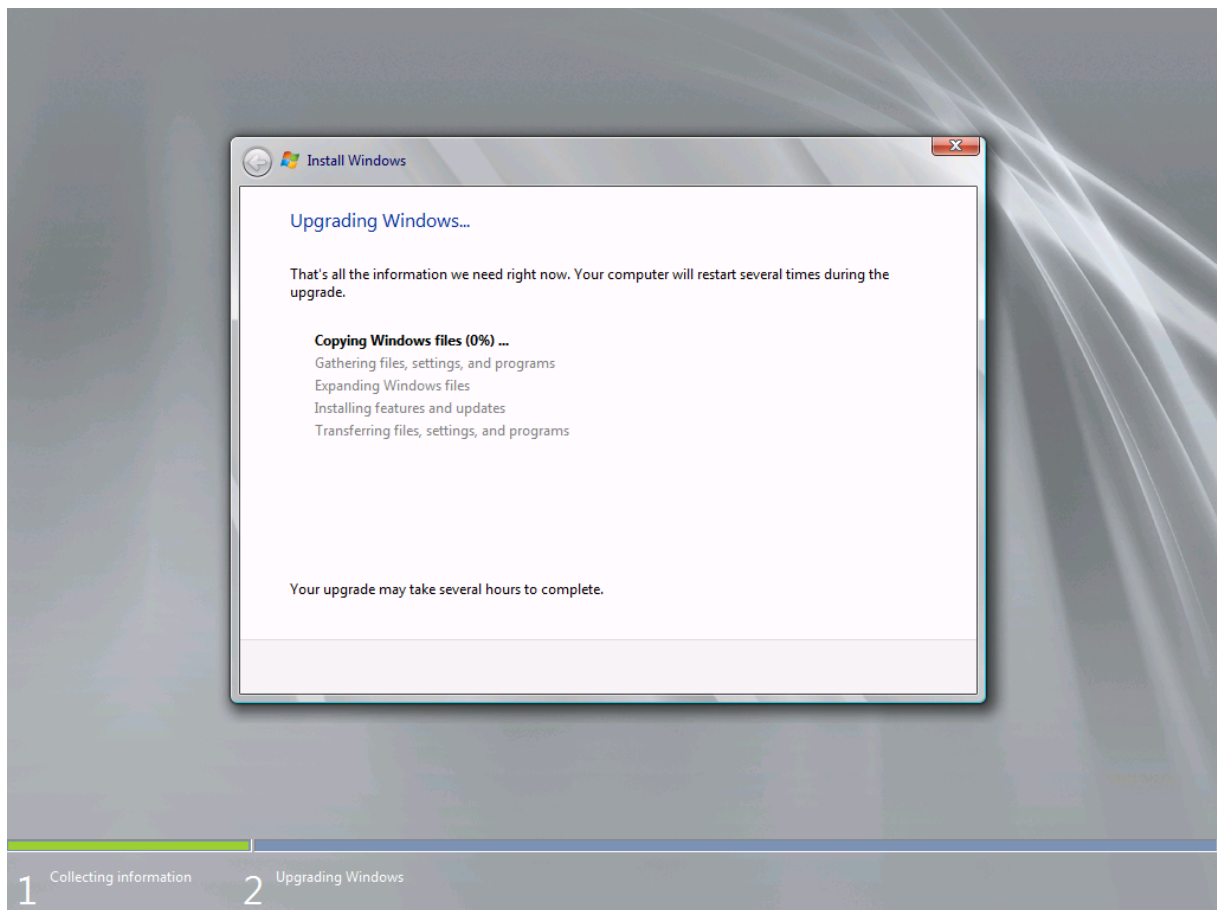


ADPREP /DOMAINPREP nicht vergessen

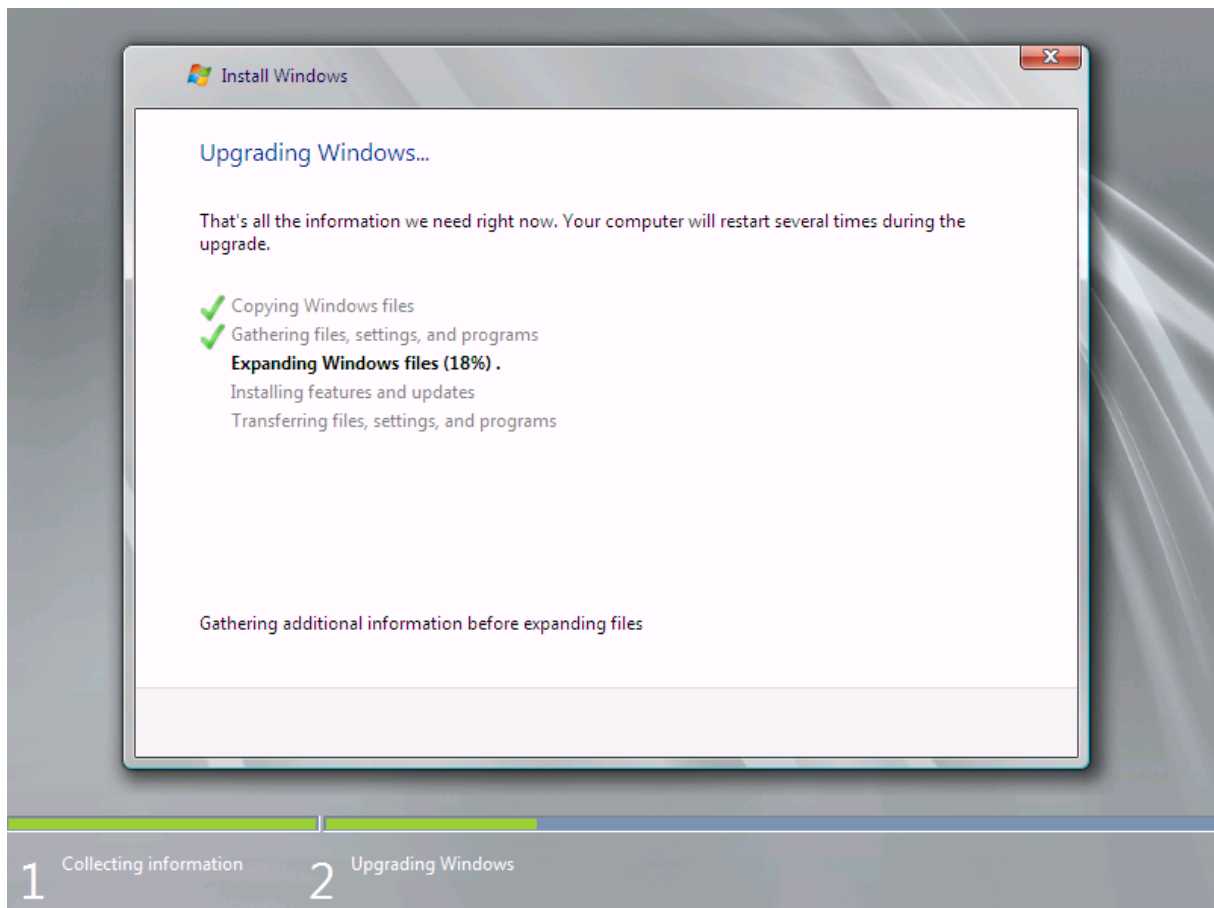
Schon besser



Prozente Jaeger

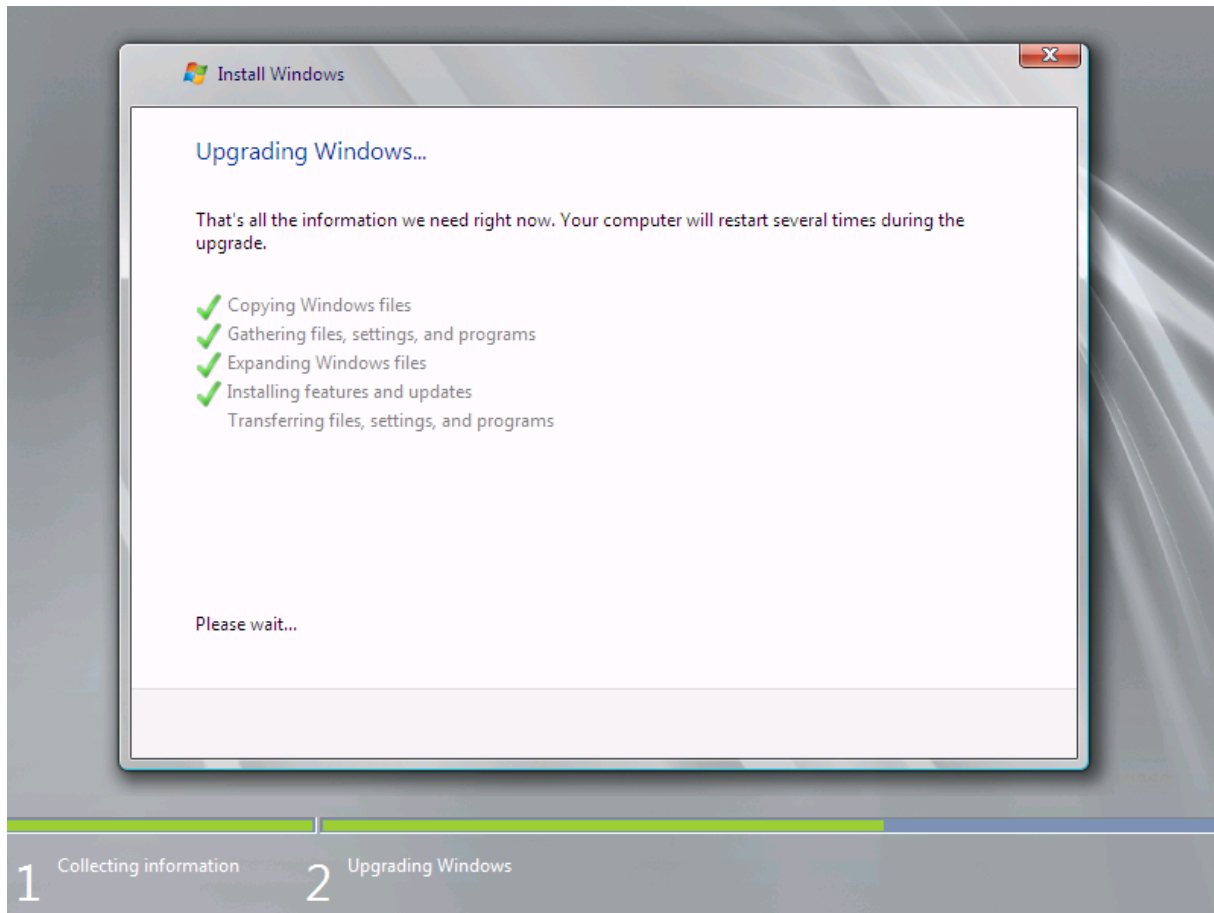


25 Minuten spaeter ... Das dauert ja: Na gut, mein Notebook ist nicht das schnellste

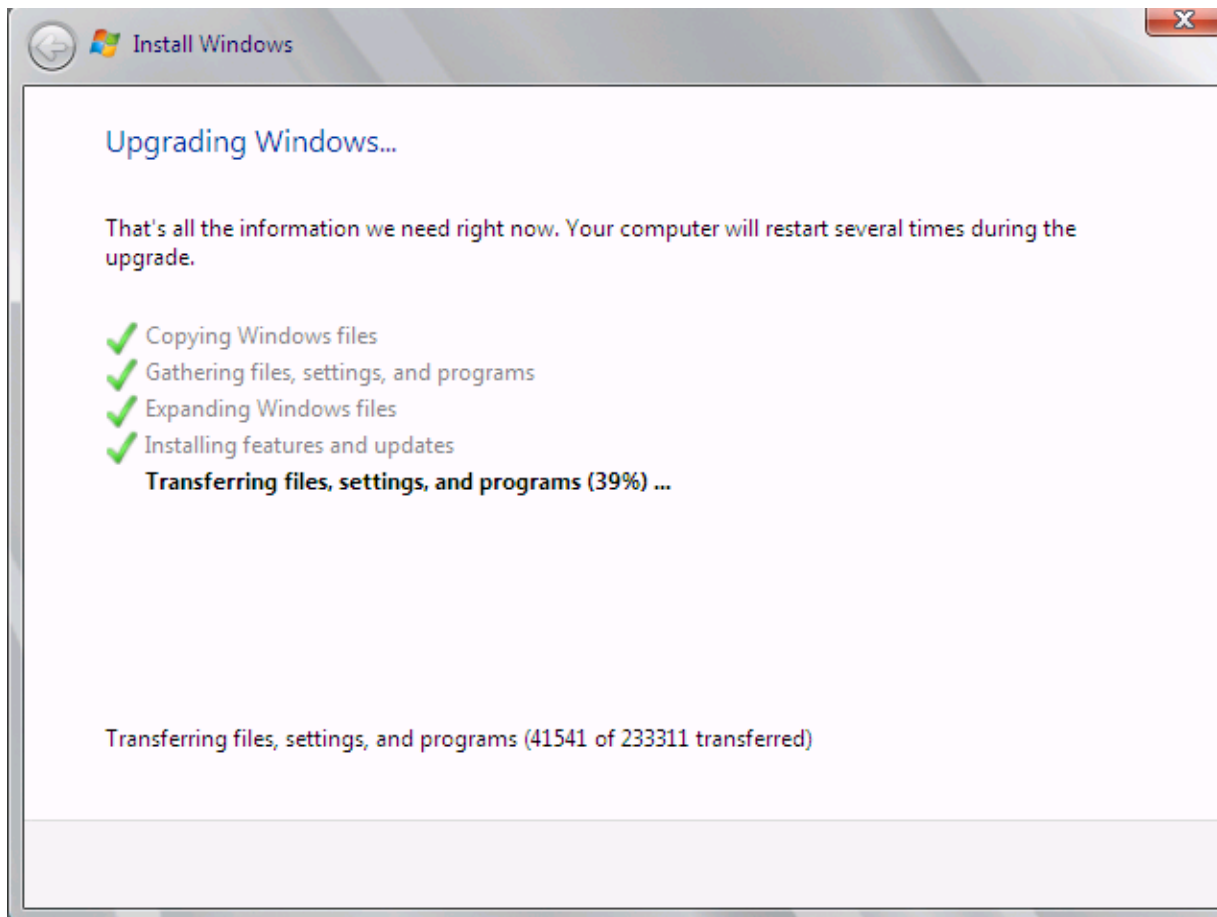


Es geht voran

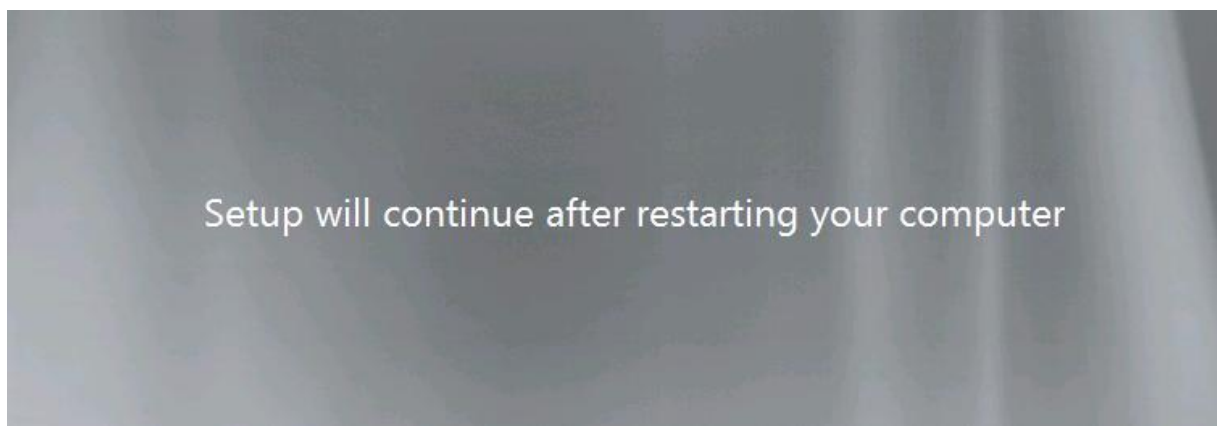




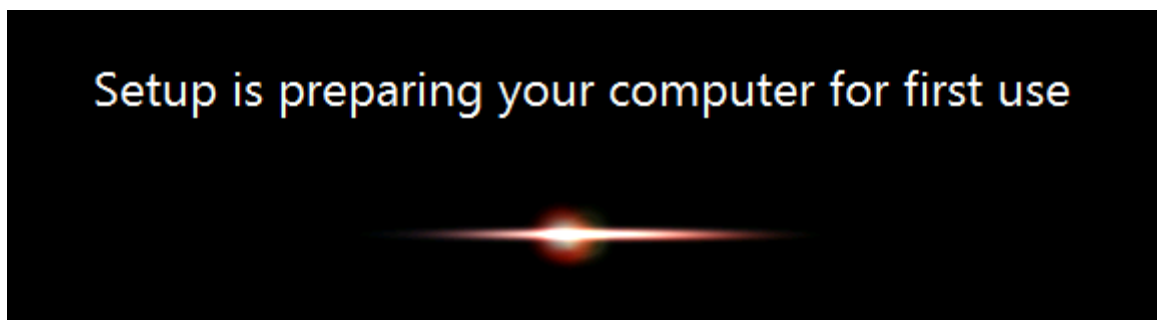
Jetzt noch ein paar Milliarden Einstellungen uebertragen



Neustart



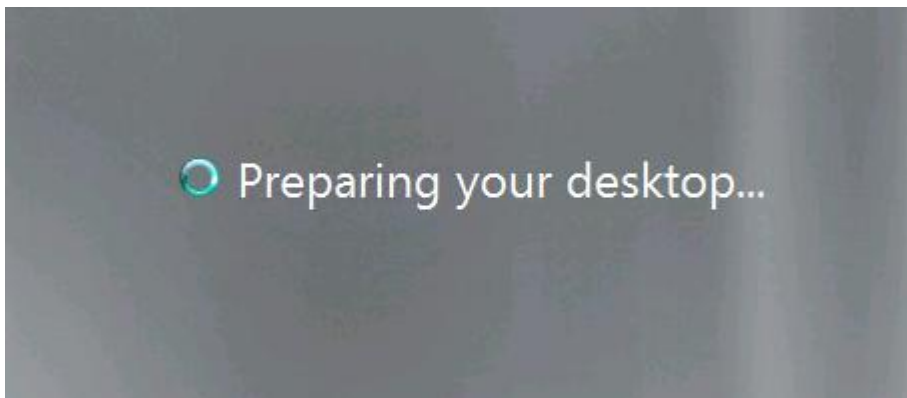
so soll es sein



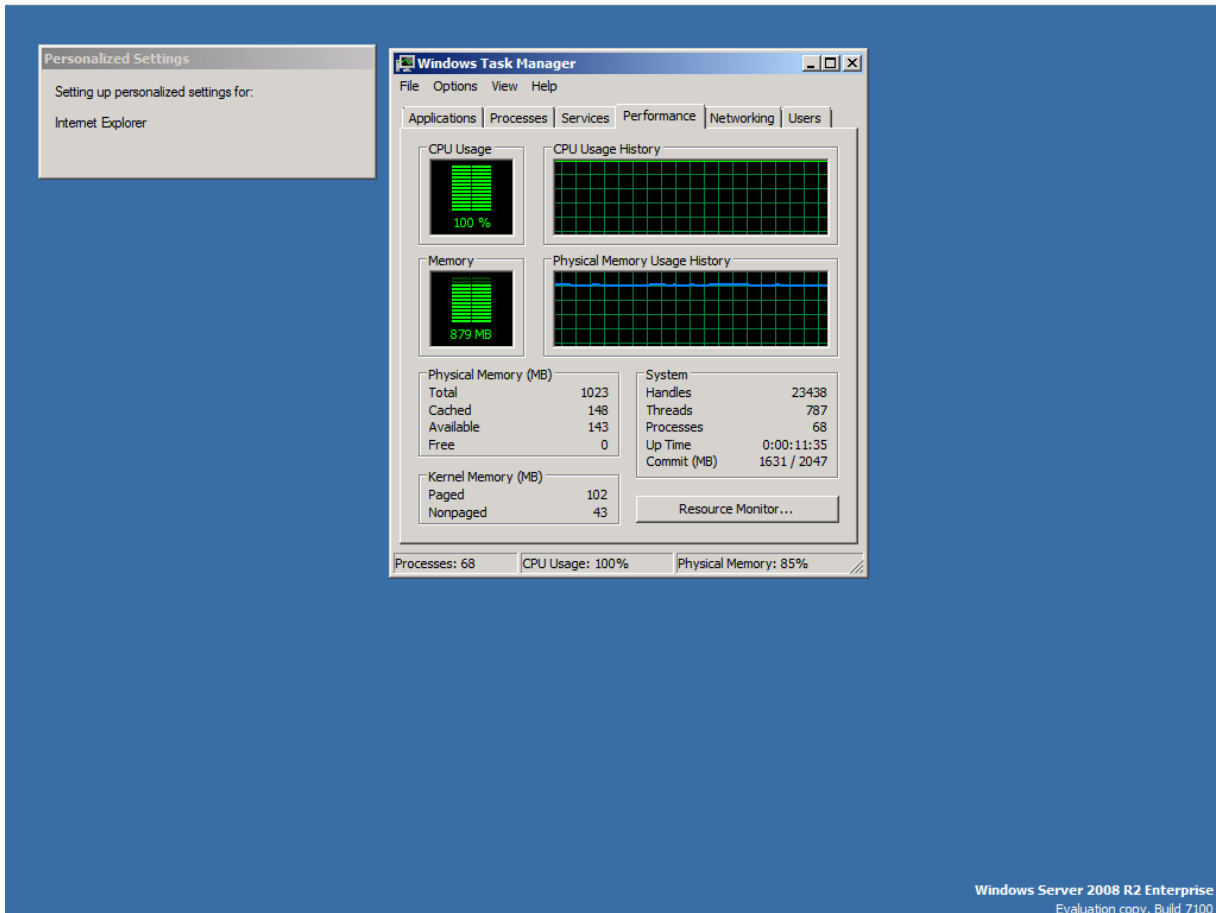
Das sieht schon mal gut aus



hmm, dass dauert ewig



Genauer gesagt in Summe 7 Minuten. Evtl. ein bissle wenig V-RAM (Exchange 2007 laeuft da ja auch noch drauf :-)



Danach ist aber alles schoen



Recycle Bin



Windows  
Compatibil...

Windows Server 2008 R2 Enterprise  
Evaluation copy, Build 7100

Start



DE



09:19  
01.05.2009

