

# Superflow for Troubleshooting Forefront TMG Installation

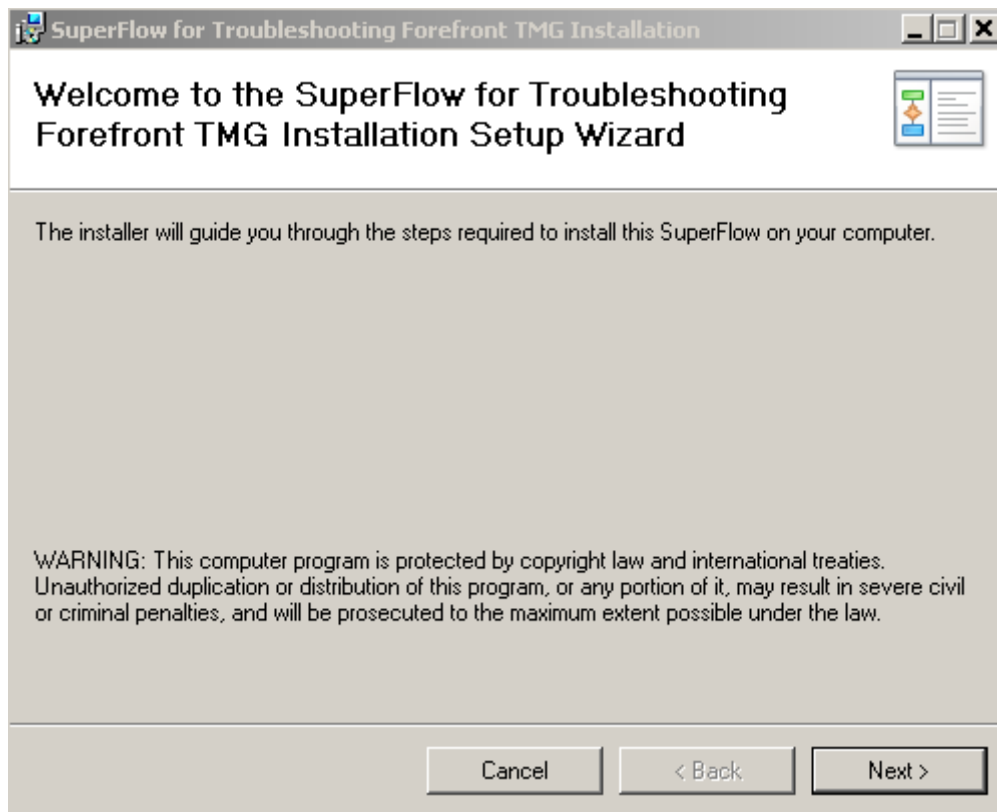
## Download

The screenshot shows a Microsoft Internet Explorer browser window displaying the Microsoft Download Center page for 'SuperFlow for Troubleshooting Forefront TMG Installation'. The browser's address bar shows the URL: <http://www.microsoft.com/downloads/details.aspx?displaylang=en&FamilyID=f1ebfda1-da51-44cc-99cb-96ad0fd40bdf>. The page features the Microsoft logo and a search bar. The main content area is titled 'SuperFlow for Troubleshooting Forefront TMG Installation' and includes a 'Brief Description' stating that the SuperFlow provides information to help troubleshoot Forefront TMG installation issues. Below the description is an 'On This Page' section with links to 'Quick Details', 'Overview', 'System Requirements', and 'Instructions'. A 'Download' button is prominently displayed. The 'Quick Details' section provides the following information:

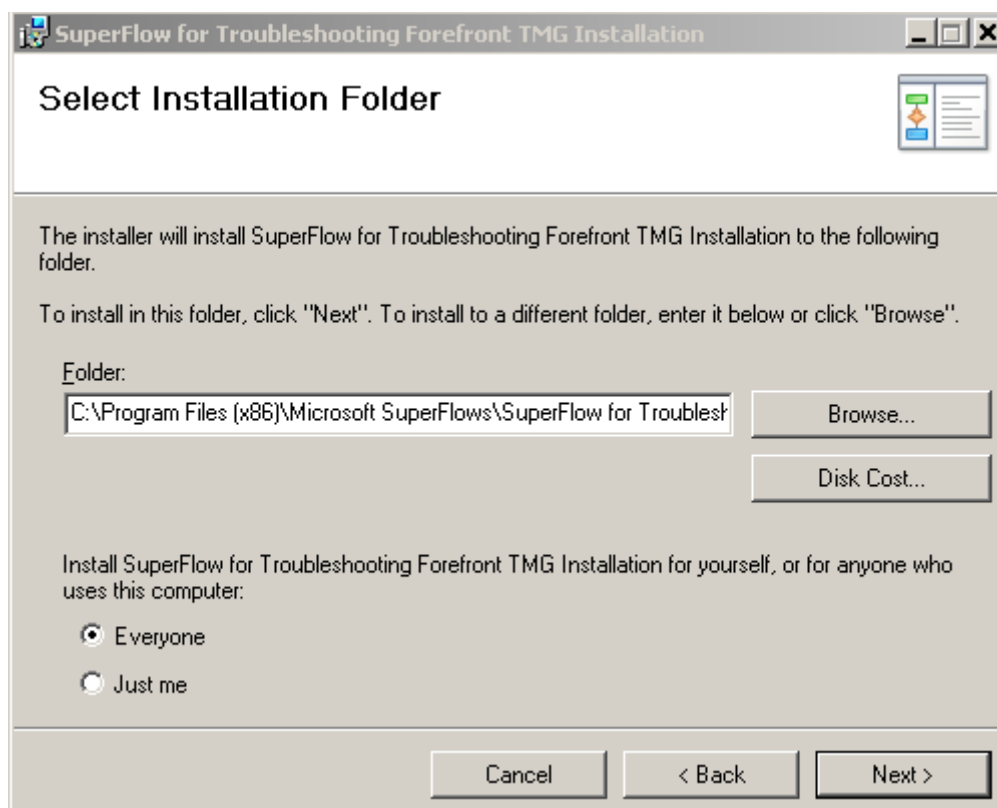
File Name:	SF_TMGIInstallation.msi
Version:	2.0.68
Date Published:	2/17/2010
Language:	English
Download Size:	1.8 MB
Estimated Download Time:	Dial-up (56K) 5 min

The left sidebar of the page lists 'Product Families' (Windows, Office, Servers, Business Solutions, Developer Tools, Windows Live, MSN, Games & Xbox, Windows Mobile, All Downloads) and 'Download Categories' (Games, DirectX, Internet, Windows Security & Updates, Windows Media, Drivers, Home & Office, Mobile Devices, Mac & Other Platforms, System Tools, Development Resources).

## Installation



Lizenzvertrag lesen und ggfs. zustimmen



Allgemeine Hinweise

SuperFlow Application

Microsoft  
**Forefront**  
Threat Management Gateway 2010

**Troubleshooting Forefront TMG Services**

Overview | Preparation Tool Issues | Setup Issues | Resources

This SuperFlow is designed to help you troubleshoot and resolve Forefront TMG installation issues. It takes you through the steps required to:

- Determine the root cause of your issue.
- Perform the appropriate resolution steps.
- Verify that the resolution fixed the issue.




**Navigating the SuperFlow**

You can navigate the SuperFlow by using the Preparation Tool Issues, Setup Issues, and Resources tabs:

- The **Preparation Tool Issues** tab helps you troubleshoot issues you may encounter when running the Preparation Tool.
- The **Setup Issues** tab helps you troubleshoot issues you may encounter when running the Installation Wizard.
- The **Resources** tab contains links to additional information to help you troubleshoot Forefront TMG installation issues.

**SuperFlow Icons**

The following table lists the icons that might display in the SuperFlow.

Icon	Description
	Send feedback about this SuperFlow.
	Opens the current topic in another window.
	Prints the current topic.

**Keyboard Shortcuts**

Keyboard shortcuts are combinations of keystrokes that can be used to perform a task that would typically require a mouse or other pointing device. The following table lists the keyboard shortcuts that you can use in the SuperFlow.

Press this key	To do this
TAB	Move to the next object.
SHIFT+TAB	Move to the previous object.
CTRL+TAB	Move to the next SuperFlow tab.
CTRL+SHIFT+TAB	Move to the previous SuperFlow tab.
ENTER	Select an object. (Equivalent to a mouse click.)
SPACEBAR	View another dataflow, workflow, or process for the selected object. This functionality is available only when a magnifying glass displays on the selected object.
CTRL+Plus (+) or Hyphen (-)	Zoom in or out.
ALT+F	Send feedback about this SuperFlow.

Created by using the SuperFlow interactive content model

Zoom | 100%

## Probleme bei der Installation der Prerequisites

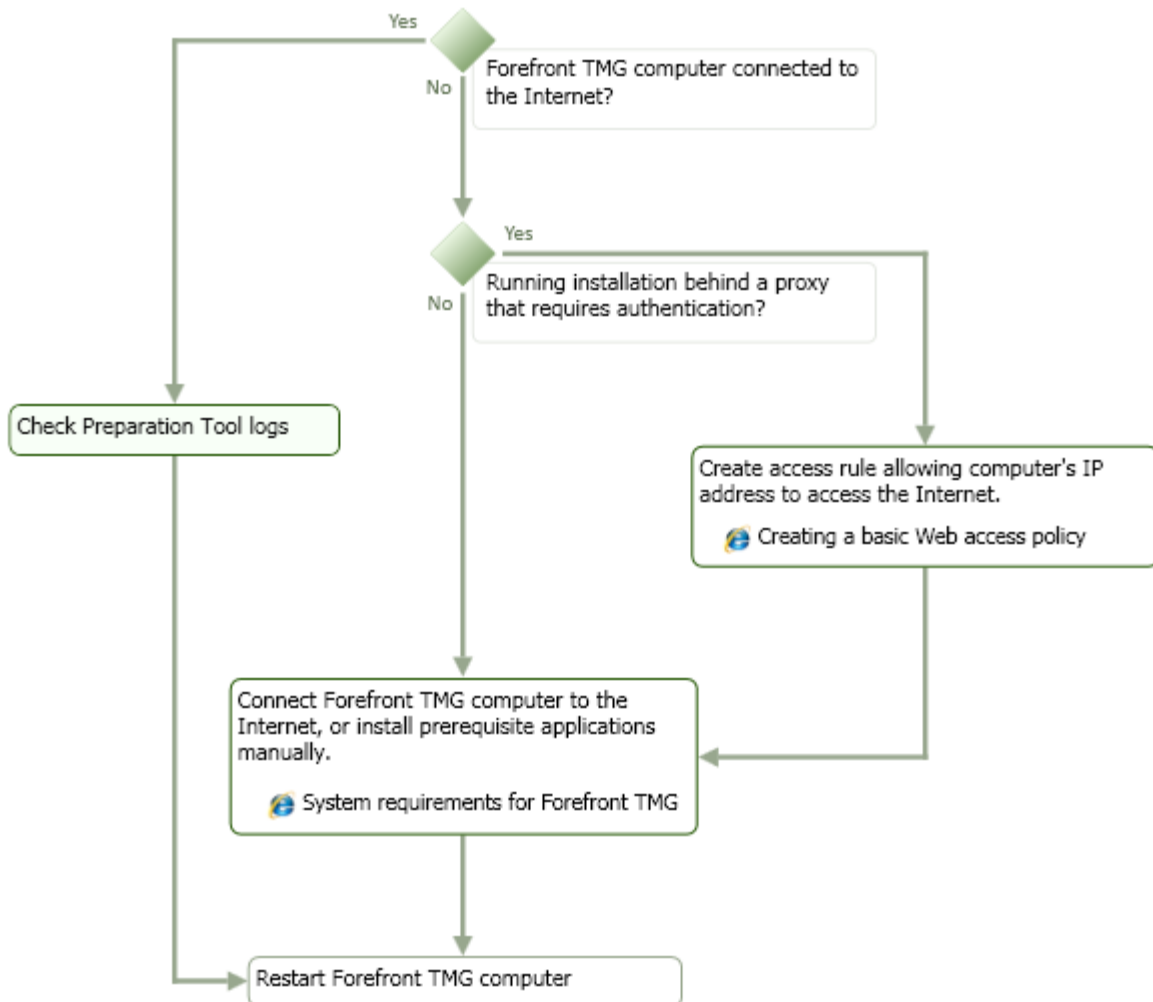
## Troubleshooting Forefront TMG Services

Overview

**Preparation Tool Issues**

Setup Issues

Resources



Troubleshooten waehrend der Installation

Ein Klick auf ein Grafikelement fuehrt zu weiteren Informationen

SuperFlow Application

**Troubleshooting Forefront TMG Services**

Microsoft Forefront Threat Management Gateway 2010

Overview | Preparation Tool Issues | **Setup Issues** | Resources

Created by using the SuperFlow interactive content model


## Weitere Ressourcen

SuperFlow Application

**Troubleshooting Forefront TMG Services**

Overview | Preparation Tool Issues | Setup Issues | **Resources**

The following resources provide more information about installing and troubleshooting Forefront TMG.

 [Forefront TMG Deployment](#)

 [Forefront TMG Troubleshooting](#)

You might also encounter Forefront TMG installation issues when:

- Upgrading to Windows Server 2008 R2.
- Installing from a network drive.
- Group Policy enforces Windows.

Guidance for diagnosing and resolving these issues is provided in [Troubleshooting the installation](#).