

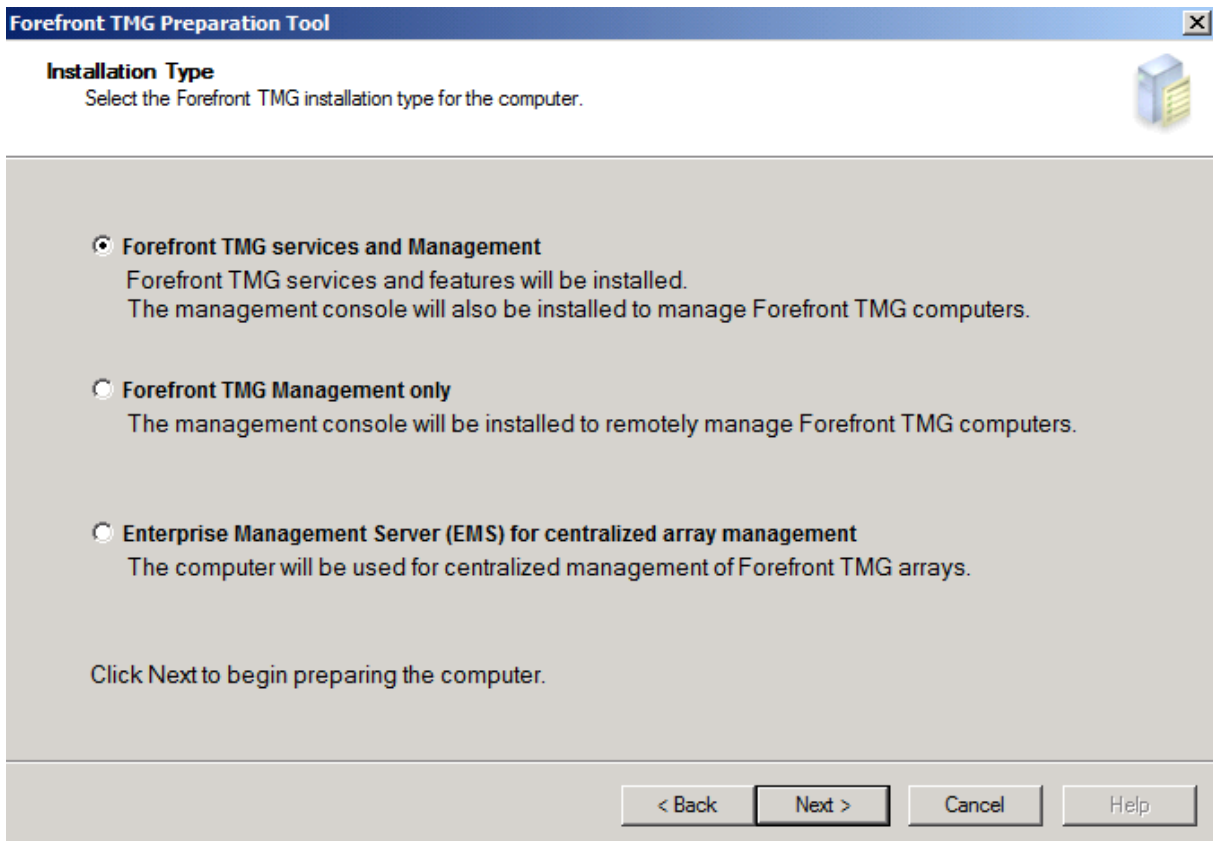
Forefront Threat Management Gateway 2010 Installation

Exchange Server 2007 oder 2010 Edge sollte vor der TMG Installation installiert sein

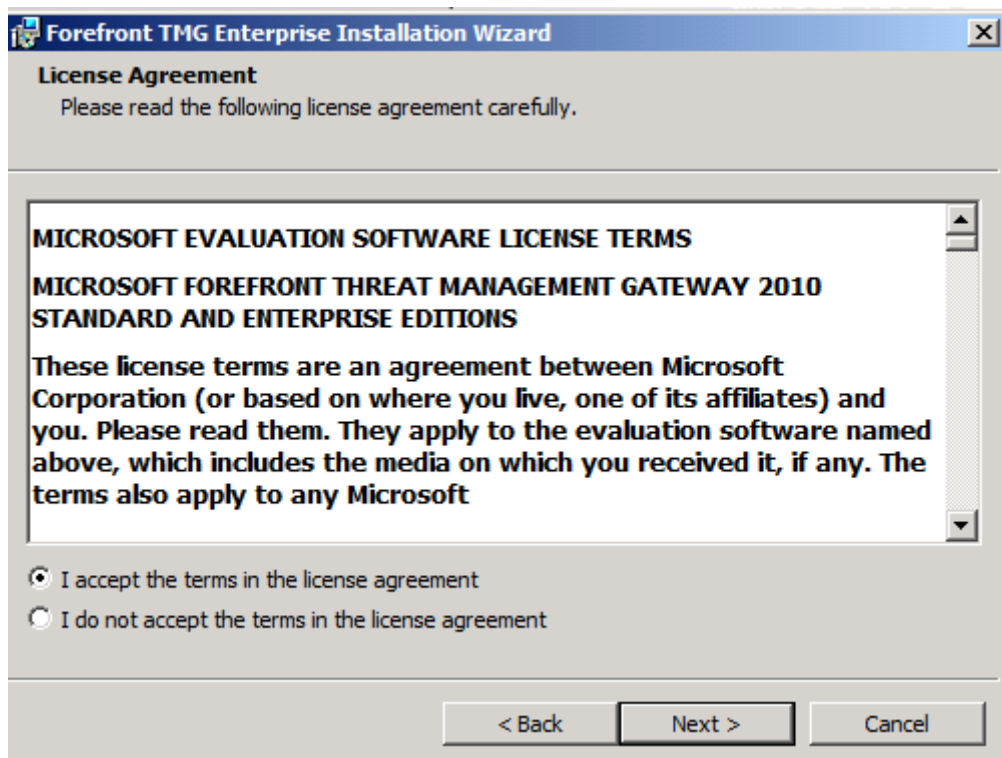
Downloaden und Setup starten



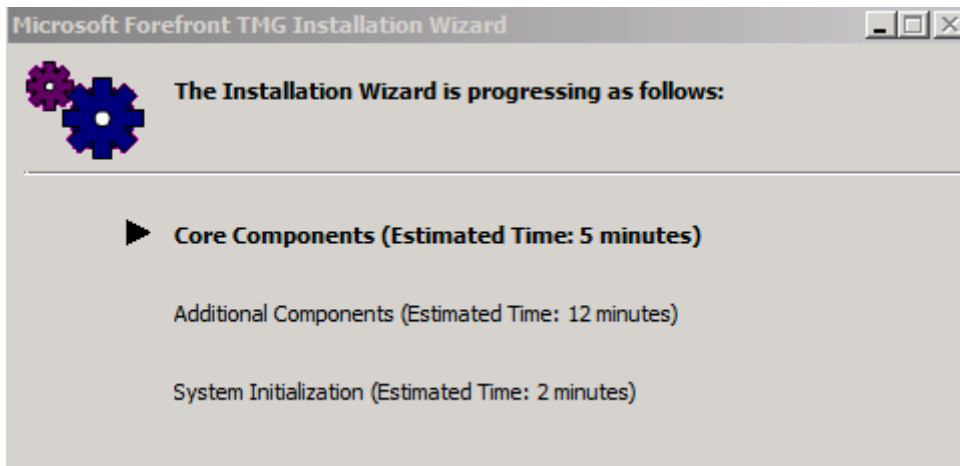
Preparation Tool starten



Lizenzvertrag lesen, akzeptieren oder nicht?

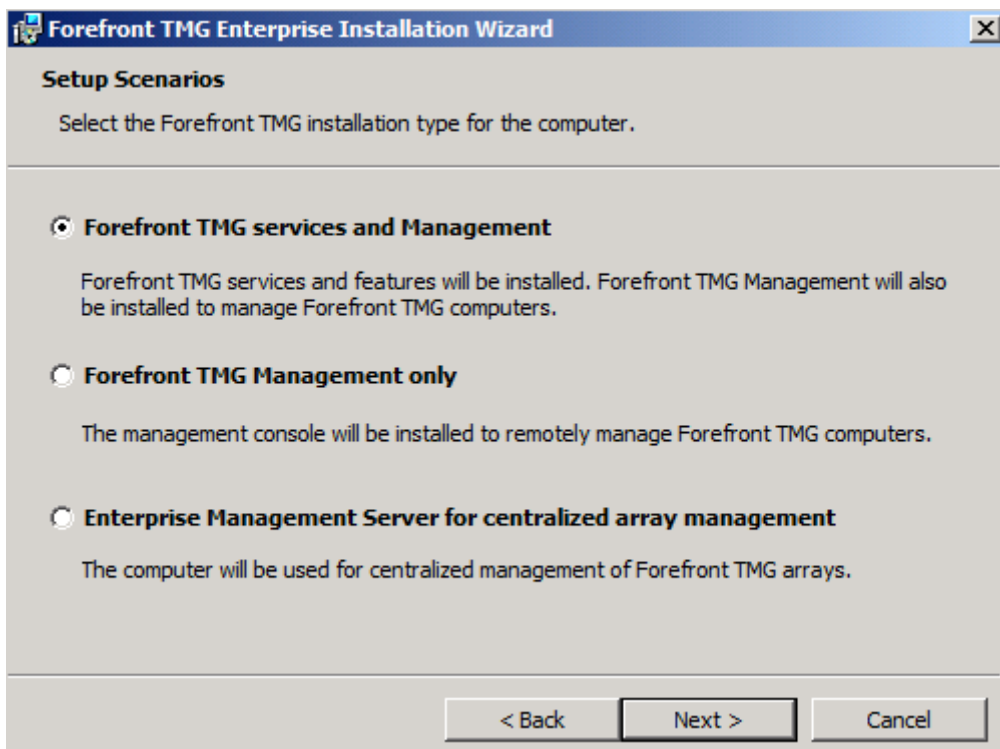


So lange dauert es

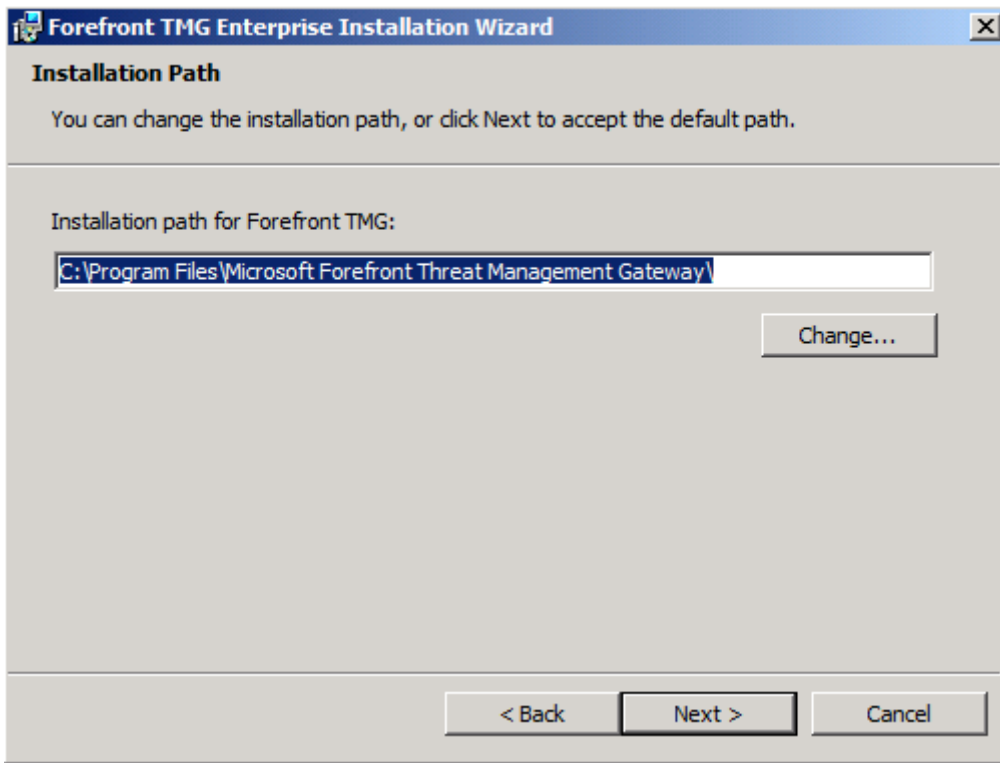


Seriennummer angeben

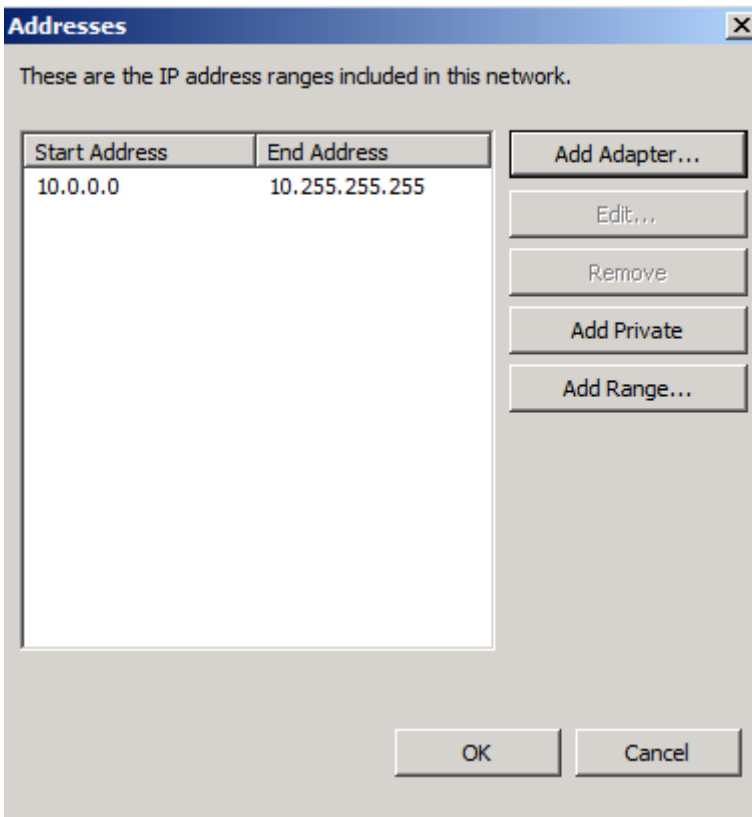
Was soll installiert werden?



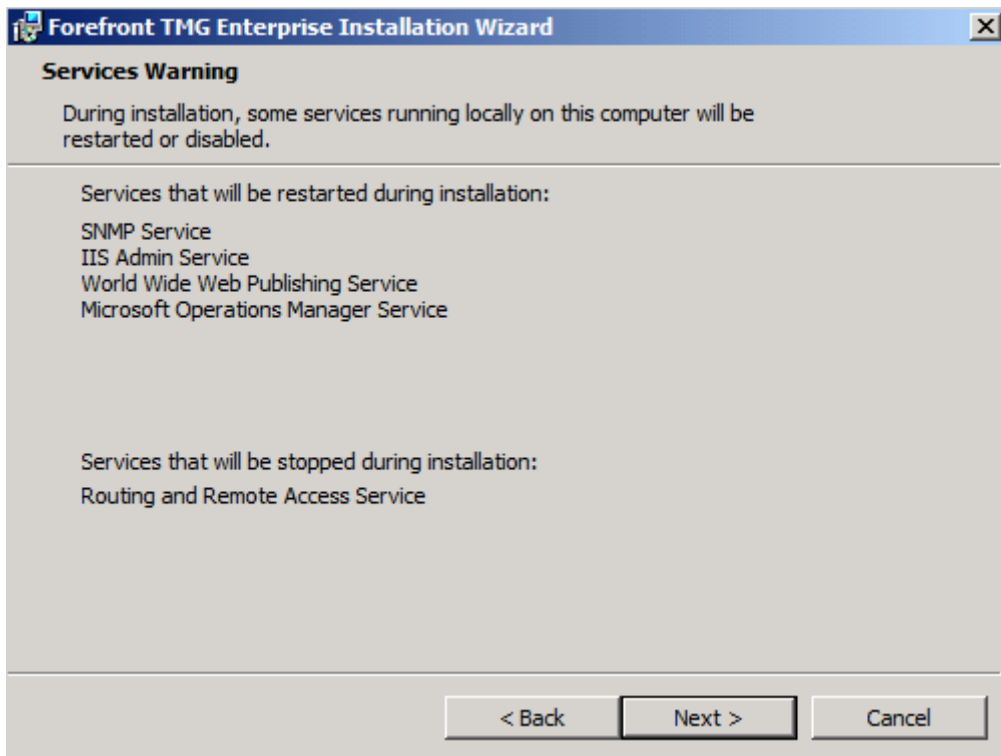
Installationspfad



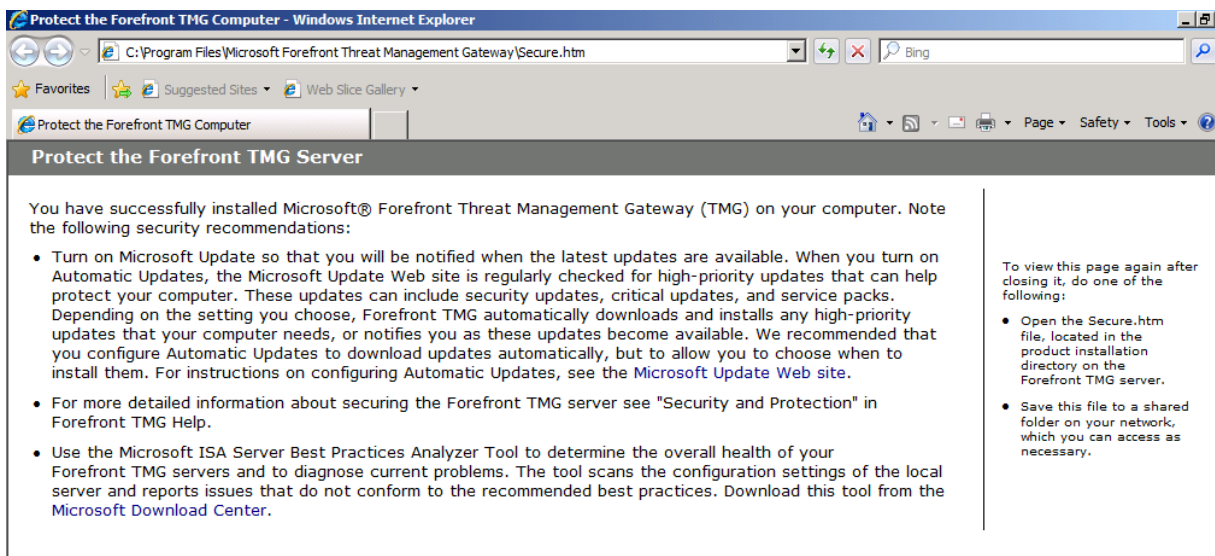
IP Adressen des internen Netzwerks



Folgende Dienste wuerden beendet werden, wenn diese installiert waeren



Nach einiger Zeit ist die Installation fertig



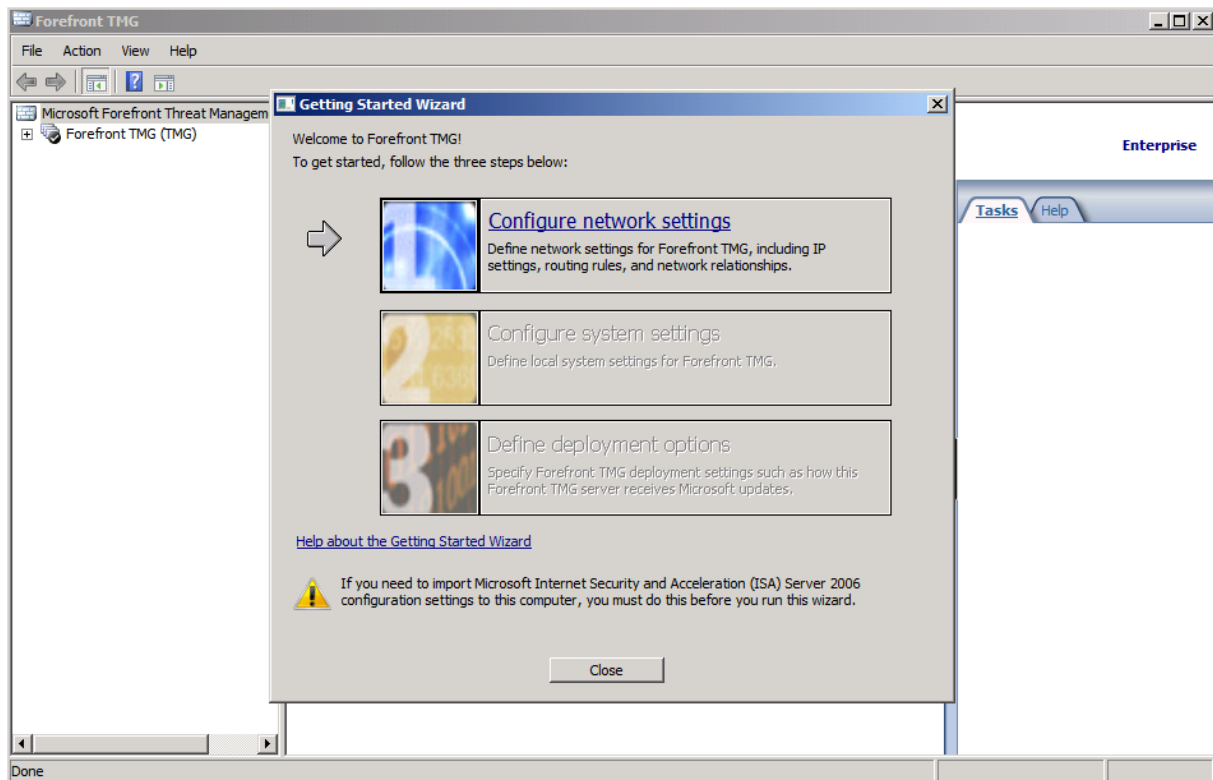
Forefront Protection 2010 fuer Exchange installieren



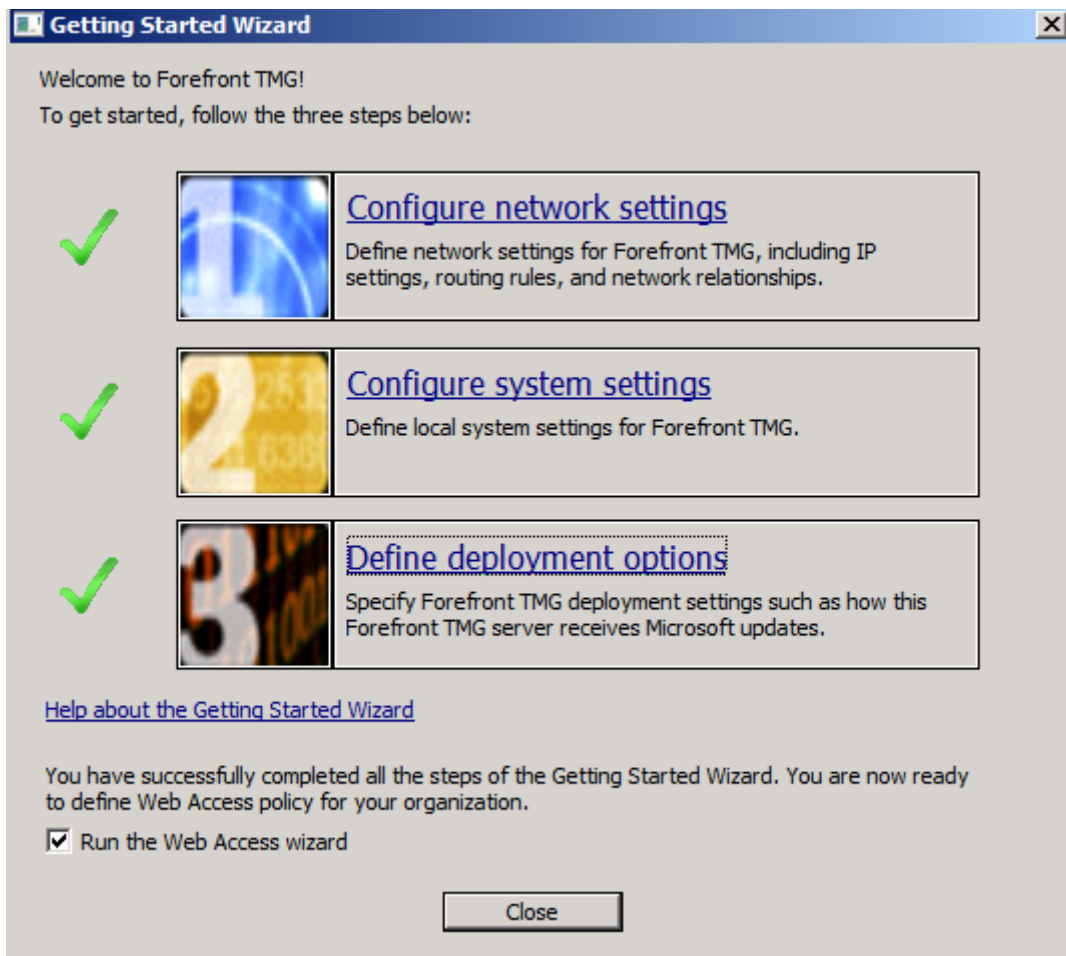
Microsoft Forefront Protection 2010 for Exchange Server

Configuring product and services. Please wait...

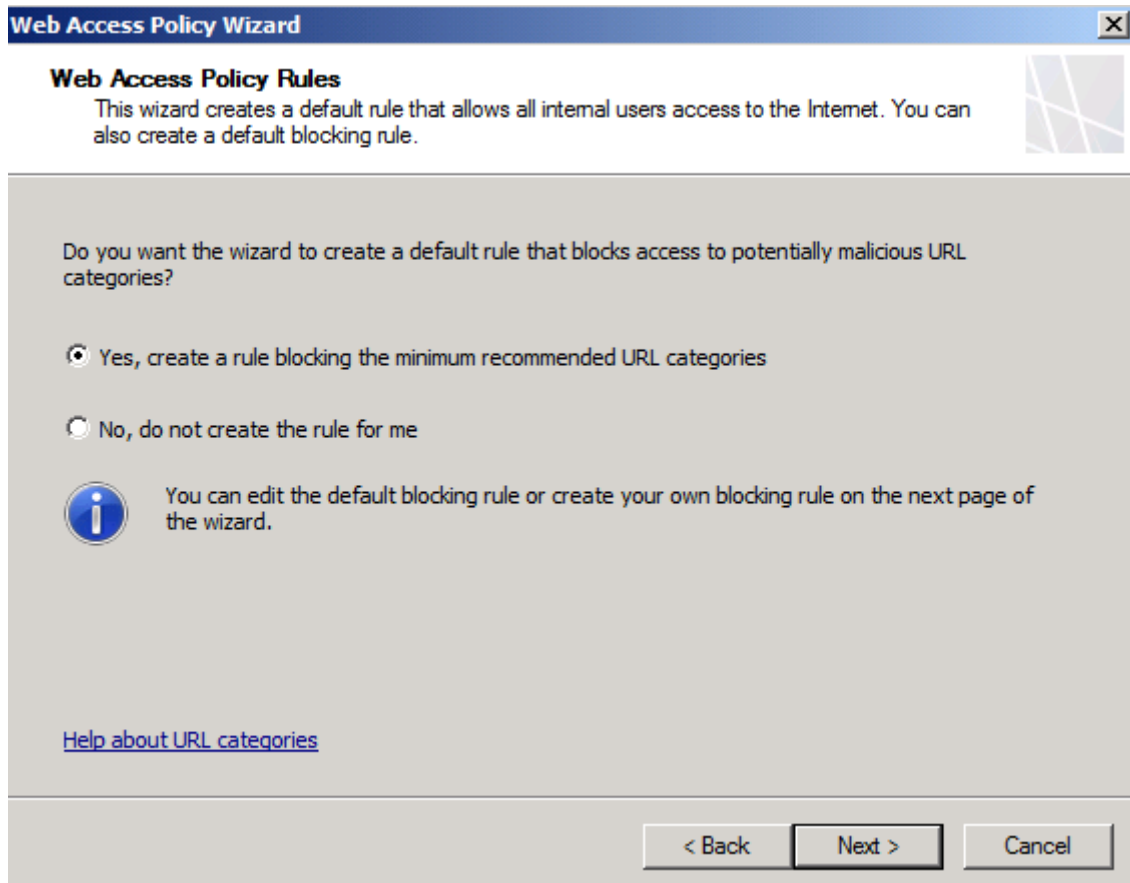
Getting Started Wizard starten



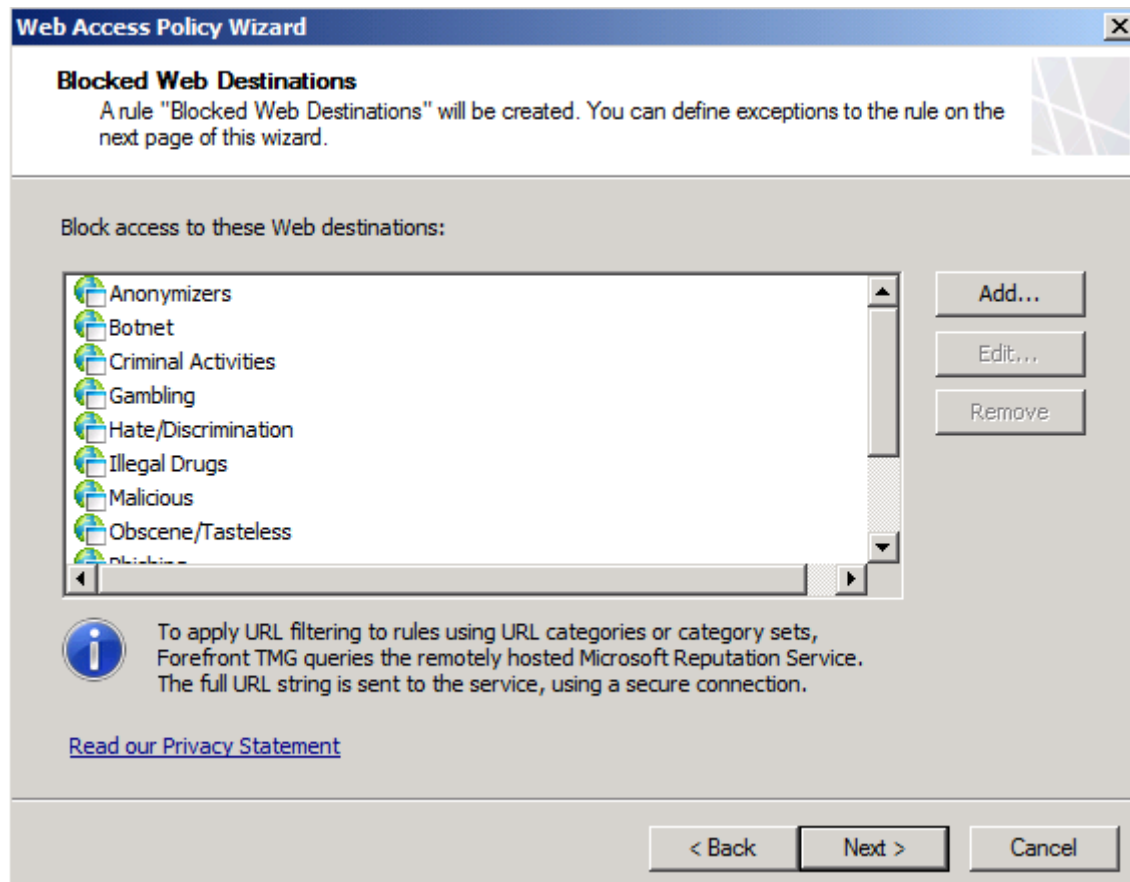
Den Anweisungen des Assistenten folge leisten



Den Anweisungen folgen



URL blocken?



HTTPS Datenverkehr inspizieren?

Web Access Policy Wizard ✕

HTTPS Inspection Settings

Forefront TMG can scan HTTPS traffic and block content that is not in compliance with policies and filters.


Allow users to establish HTTPS connections to Web sites

Inspect HTTPS traffic and validate HTTPS site certificates

Do not inspect HTTPS traffic, but validate the HTTPS site certificate. Block HTTPS traffic if the certificate is not valid.

Do not inspect HTTPS traffic and do not validate HTTPS site certificates. Allow all HTTPS traffic.

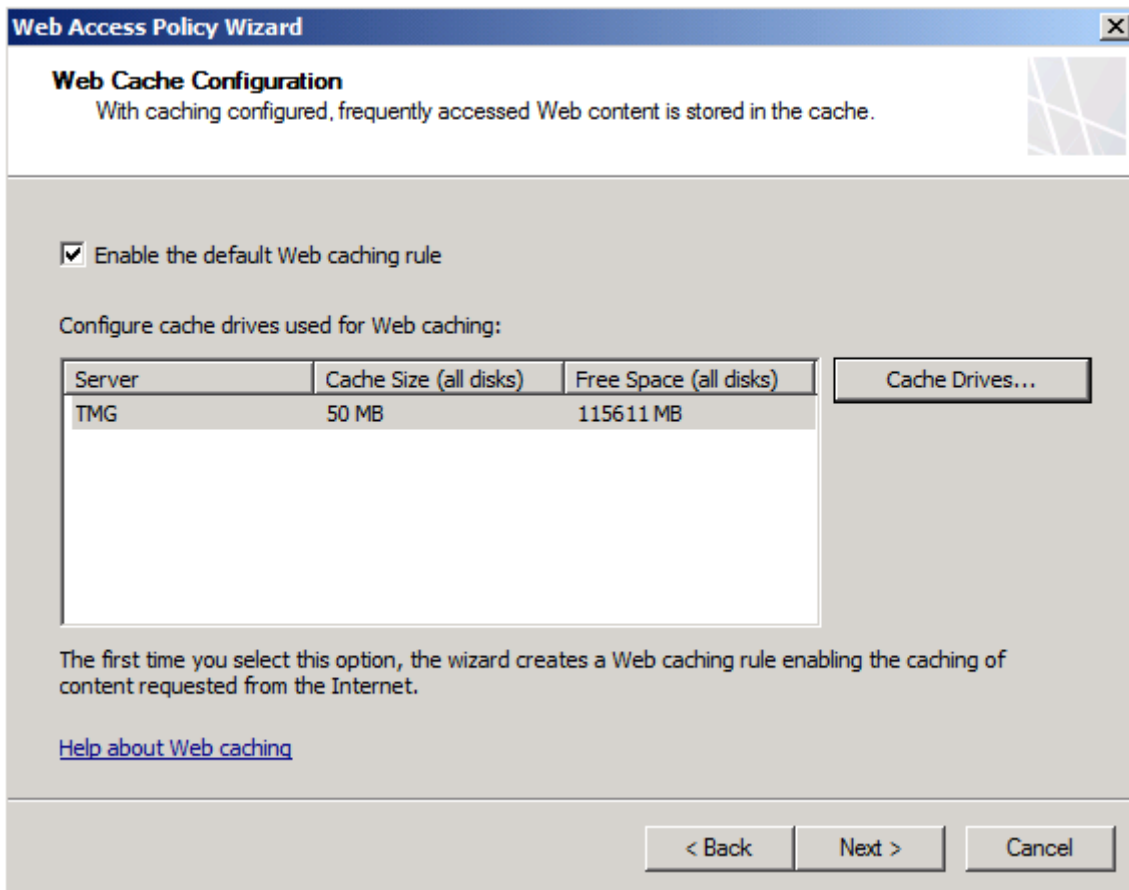
Do not allow users to establish HTTPS connections

 Enabling HTTPS inspection may have legal implications. You should verify if using this protection is in compliance with your corporate policy.

Help about [HTTPS inspection](#)

< Back Next > Cancel

Cache aktivieren?



Click Finish not swedish

