

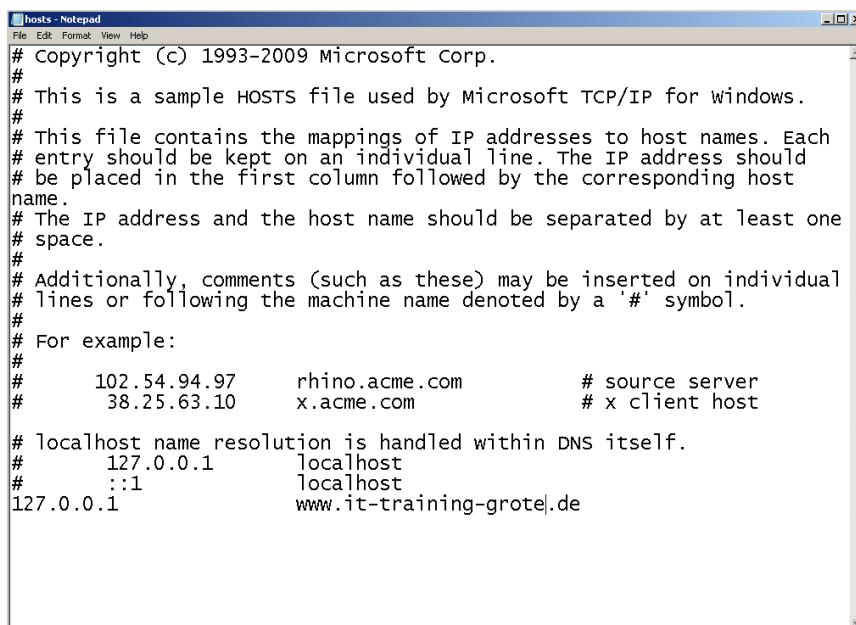
Microsoft Antivirus Software und die HOSTS Datei

Microsoft Antivirussoftware wie ...

- Microsoft Security Essentials
- Windows 8 Defender
- FEP 2010
- SCEP 2012

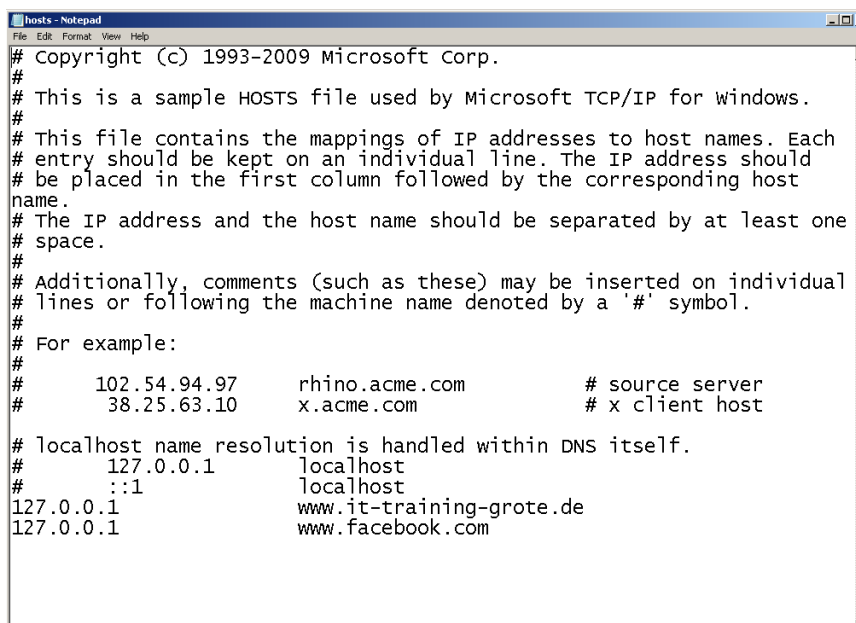
Loescht manche Eintraege aus der HOSTS Datei.

Ein Eintrag wie www.it-training-grote.de bleibt zum Beispiel bestehen (ist ja auch etwas serioeses) ☺



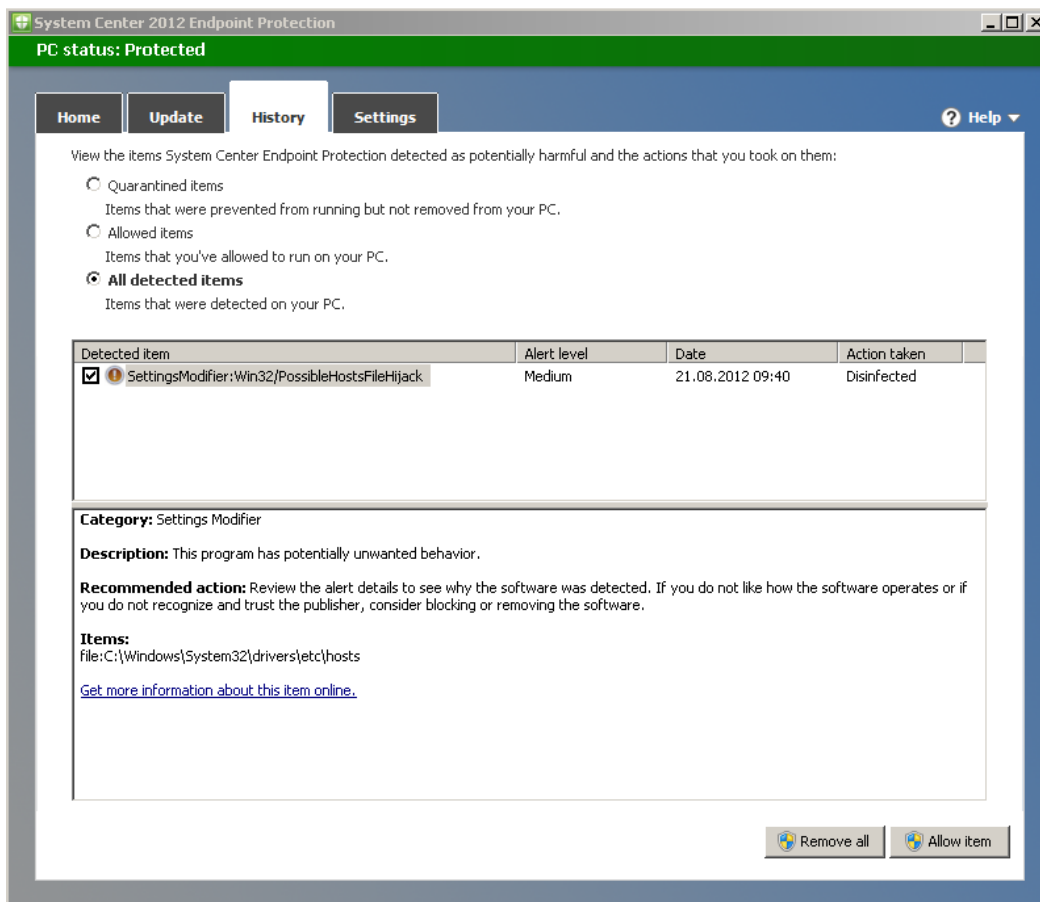
```
hosts - Notepad
File Edit Format View Help
# Copyright (c) 1993-2009 Microsoft Corp.
#
# This is a sample HOSTS file used by Microsoft TCP/IP for Windows.
#
# This file contains the mappings of IP addresses to host names. Each
# entry should be kept on an individual line. The IP address should
# be placed in the first column followed by the corresponding host
# name.
# The IP address and the host name should be separated by at least one
# space.
#
# Additionally, comments (such as these) may be inserted on individual
# lines or following the machine name denoted by a '#' symbol.
#
# For example:
#
#       102.54.94.97       rhino.acme.com       # source server
#       38.25.63.10      x.acme.com          # x client host
#
# localhost name resolution is handled within DNS itself.
#       127.0.0.1        localhost
#       ::1             localhost
127.0.0.1                www.it-training-grote.de
```

Ein Eintrag wie www.facebook.com wird zum Bsp. geloescht ...

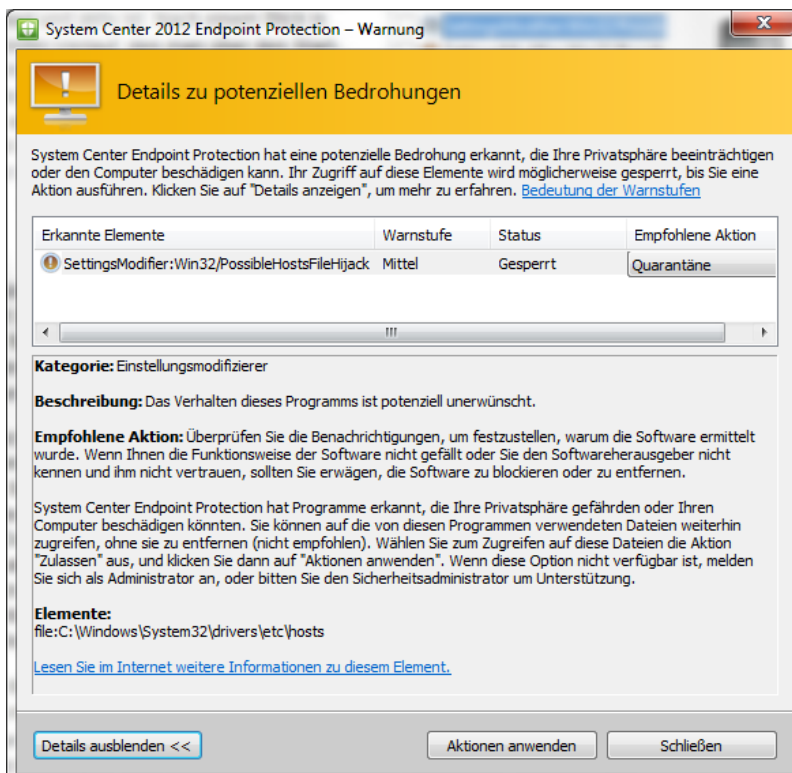


```
hosts - Notepad
File Edit Format View Help
# Copyright (c) 1993-2009 Microsoft Corp.
#
# This is a sample HOSTS file used by Microsoft TCP/IP for Windows.
#
# This file contains the mappings of IP addresses to host names. Each
# entry should be kept on an individual line. The IP address should
# be placed in the first column followed by the corresponding host
# name.
# The IP address and the host name should be separated by at least one
# space.
#
# Additionally, comments (such as these) may be inserted on individual
# lines or following the machine name denoted by a '#' symbol.
#
# For example:
#
#       102.54.94.97       rhino.acme.com       # source server
#       38.25.63.10      x.acme.com          # x client host
#
# localhost name resolution is handled within DNS itself.
#       127.0.0.1        localhost
#       ::1             localhost
127.0.0.1                www.it-training-grote.de
127.0.0.1                www.facebook.com
```

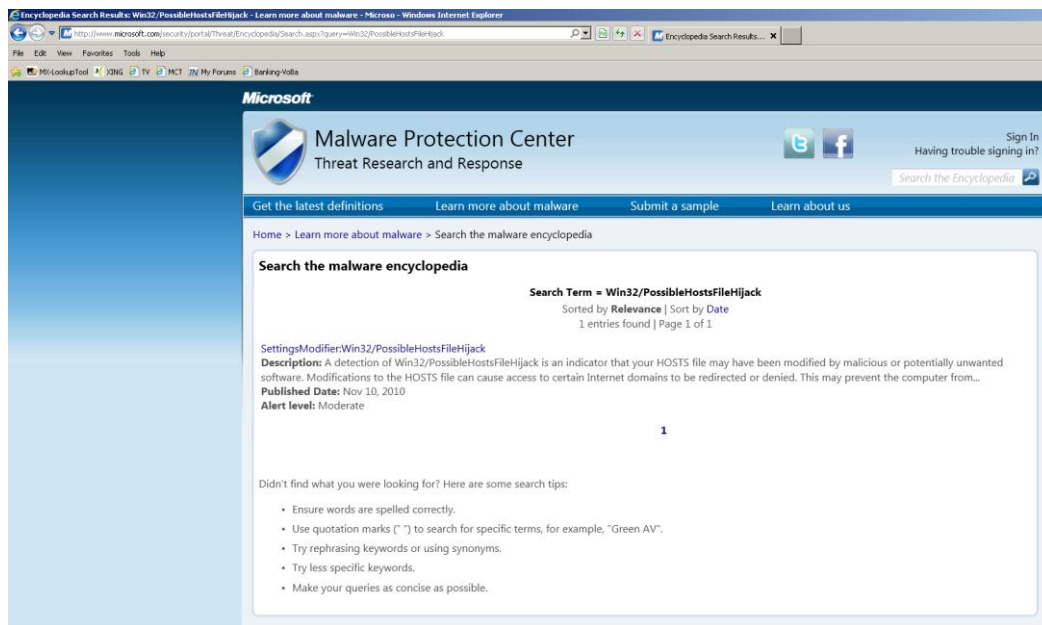
2,7 - 5 Sekunden spaeter ...



Auf Deutsch

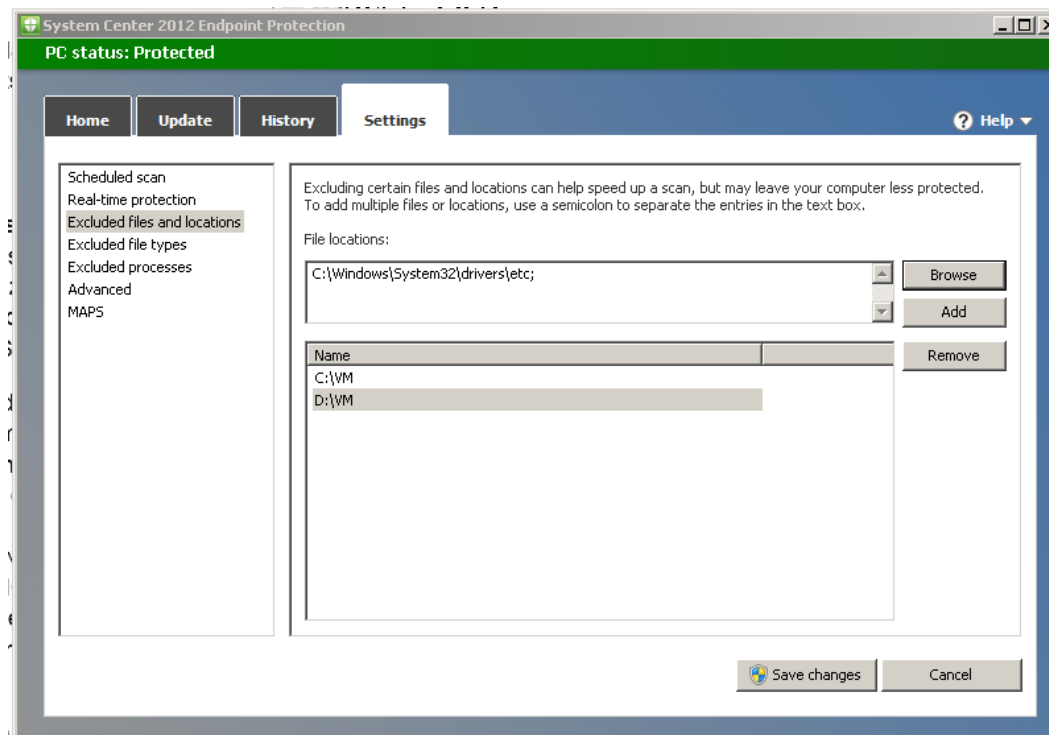


Erklärung im MMPC



Umgehungsmoeglichkeit. Eine Pfad- oder Dateiausnahme im SCEP pflegen.

Standalone Version ...



Oder zentral ueber die SCCM 2007 / 2012 Konsole und den Antimalware Policies welche den SCCM Sammlungen zugewiesen sind.