

Microsoft Message Analyzer

Privacy Alert

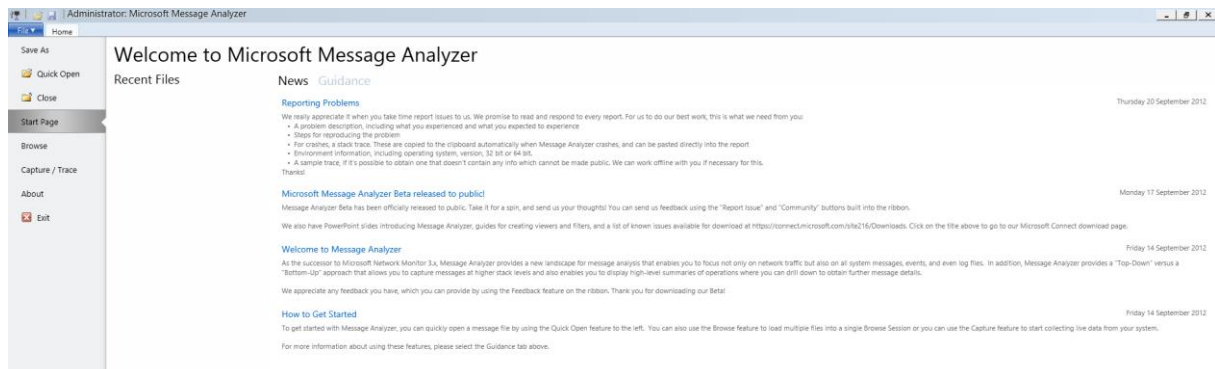
Microsoft Message Analyzer can expose the encrypted personal information of all users in an unencrypted format. This information can be viewed or saved in an unencrypted format using Microsoft Message Analyzer.

About Microsoft Message Analyzer

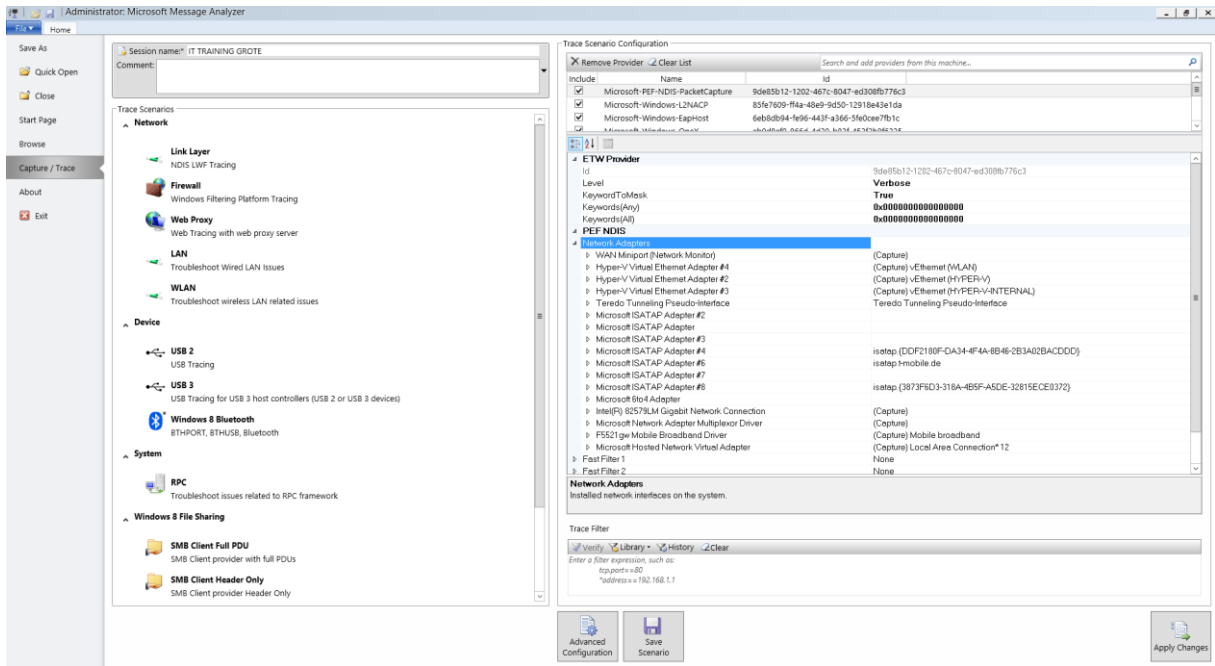
Version: 4.0.5494.0

© 2012 Microsoft Corporation. All rights reserved.

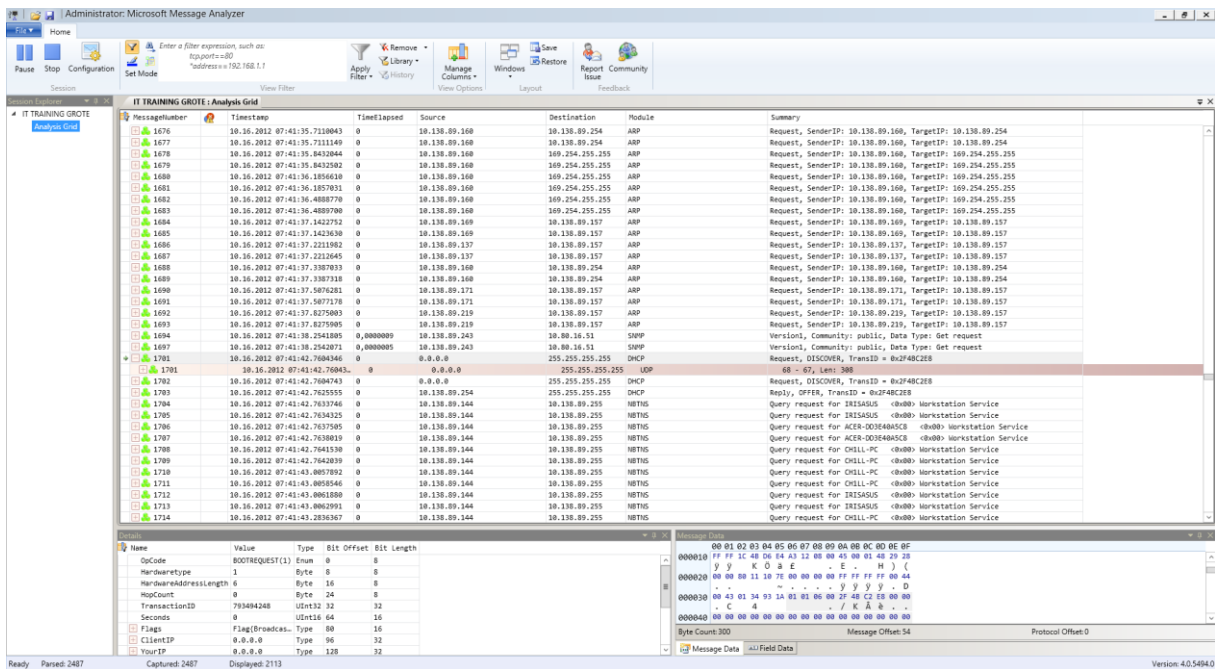
The Bluetooth® word mark and logos are owned by the Bluetooth SIG, Inc. and any use of such marks by Microsoft is under license. Other trademarks and trade names are those of their respective owners.



Auswahl der Trace Szenarien und der zu verwendenden Adapter



Ein erster Trace

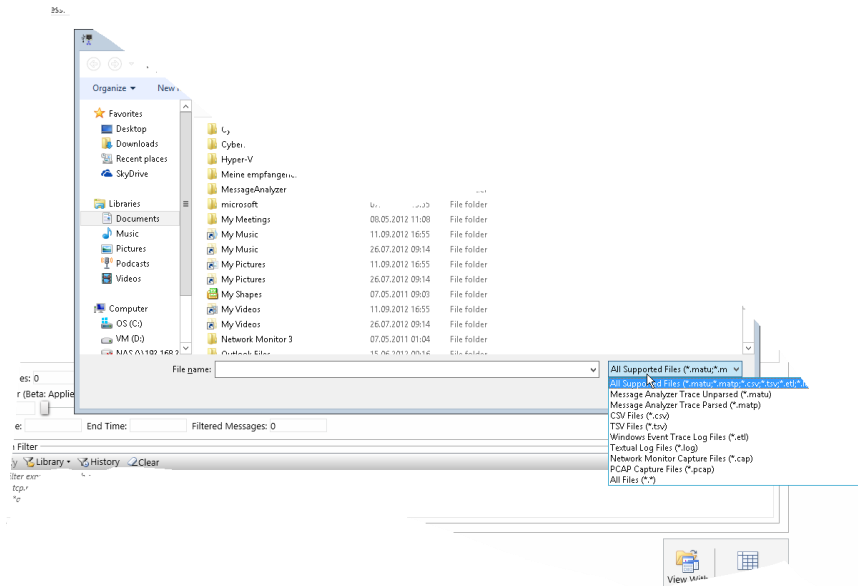


Detailinformationen

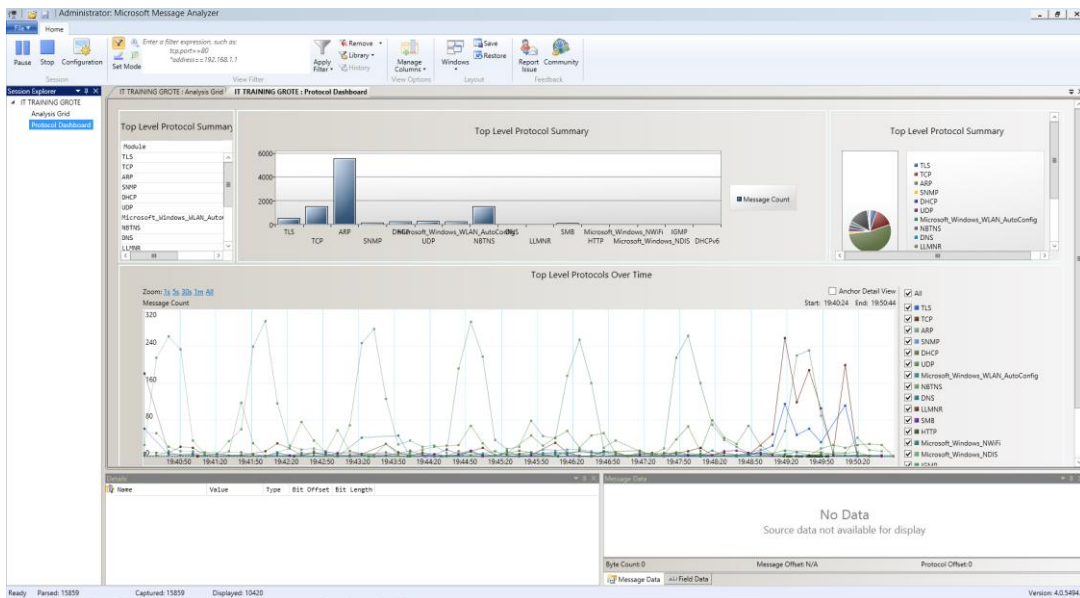
The screenshot displays a network traffic analysis tool interface. The top pane shows a list of captured packets with columns for packet number, time, source and destination IP addresses, and protocol. The selected packet (ID 14809) is shown in detail in the bottom pane. The 'Details' pane on the left lists various fields such as Version, TTL, Protocol, and Source/Destination addresses. The 'Field Data' pane on the right shows the raw binary data of the selected field, which is 'binary[10.138.89.243]'. The interface includes a search bar and various navigation controls.

Zahlreiche Import Moeglichkeiten

The screenshot shows the Microsoft Message Analyzer (MMA) interface. The main window is titled 'Administrator: Microsoft Message Analyzer'. The 'Import files' dialog box is open, displaying a list of files and folders in the 'Documents' directory. The dialog includes a search bar, a file list with columns for Name, Date modified, Type, and Size, and a file name input field. The 'File name' field contains '168'. The 'File type' is set to 'All Supported Files (*.matu;*.m)'. The 'Open' button is highlighted. The background shows the MMA interface with a sidebar on the left containing options like 'Save As', 'Quick Open', 'Close', 'Start Page', 'Browse', 'Capture / Trace', 'About', and 'Exit'. The main area shows session information and a selection filter.



Was fuers Auge. Grafische Auswertung mit interaktiven Moeglichkeiten zur Detailsicht



Netmon Filtersyntax. Hat sich in meinen bisherigen Tests nicht zu Netmon 3.4 geaendert. Ist IMHO umfangreicher und einfacher bedienbar

